

Quick Start Guide



Content

- (1) Digital Air Forced 'AE' Incubator
- (-) Aluminum Shelves
 - 10 'AE' Series - 2 Shelves
 - 12 'AE' Series - 3 Shelves
- (-) Wire Shelf Supports
 - 10 'AE' Series - 4 Shelves Supports
 - 12 'AE' Series - 6 Shelves Supports
- (1) Aluminum Drip Pan

Cautions

- ⚠ Use caution when lifting or moving the incubator.
- ⚠ Only use a grounded outlet rated for your unit's electrical requirement.
- ⚠ Do NOT place volatile or combustible materials inside the incubator.
- ⚠ **Acrylic door caution**

To avoid damage to the acrylic door, do not expose it to high-moisture applications, ammonia, alcohol derivatives, certain oils, commercial cleaners, urine, or other harsh chemicals.

Before you power the unit ON

- Ensure removal of all the packaging items from the incubator before use.
- Ensure the fuse and the red fuse holder are securely in place at the back of the incubator.

Setting up the unit

- Place unit on a flat, solid surface.
- Maintain a minimum of 3 inches of separation around the unit's walls and 8 inches above the unit.
- Plug the incubator into a grounded outlet for your unit's rated voltage. Isolate your incubator to a separate, appropriately rated circuit or breaker.

- ⚠ Electrical specifications are found on label located at the back of incubator.

For full manuals and guides, please visit:
<https://quincylab.com/incubators-1>

For general certifications, please visit:
<https://quincylab.com/certifications>

-OR-

Scan the QR code to access the full operating manual and guides page



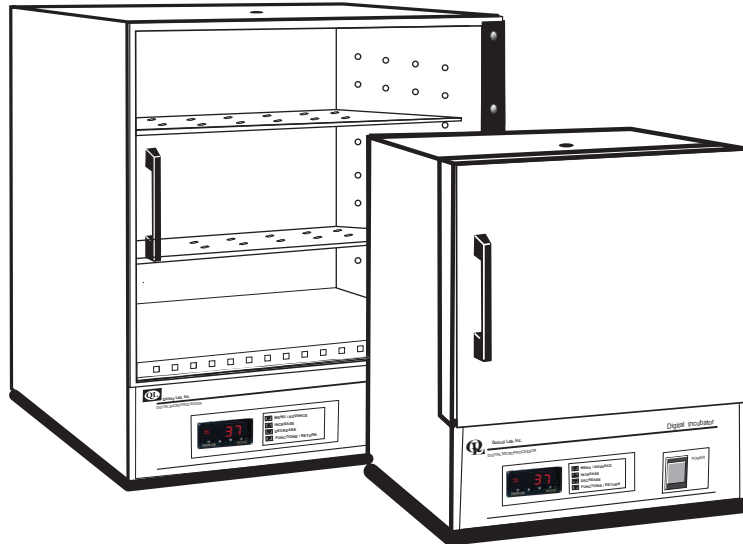
Contact

Quincy Lab Support:
800-482-4328 | information@quincylab.com

Digital Air Forced Incubator

10-140AE, 10-180AE, 12-140AE, 12-180AE

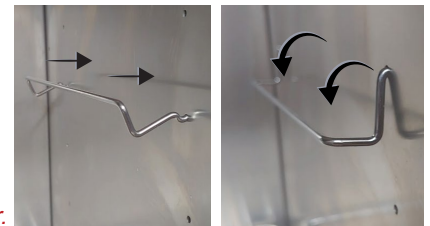
- ⚠ The top hole can be left open or closed without affecting the unit's performance. It simply allows warm/moist air to escape by natural convection.



Quick start-up

- 1 Insert the incubator's shelf supports (as shown to the right) at the desired height and place the shelf on top.

For best processing performance have the shelves placed at the center of the incubator.



- 2 Press the power button on the front of the unit to power ON the incubator.
- 3 Set the desired operating temperature on the controller.

Upon powering on, the incubator will automatically heat to the factory preset temperature. Follow the steps below to adjust the setpoint temperature.



How to change the temperature Setpoint

1. Press **P** until **SP** appears on the display.
2. Use **▲** or **▼** keys to set the temperature setpoint.
3. Press **P** continuously until you return to the process value.

- ⚠ The lights on the left hand side of the controller **OUT** and **RUN** indicates normal operation. A slow flashing **OUT** light indicates normal operation.



- ⚠ Allow a minimum of 20 minutes for the incubator's temperature to stabilize before making any subsequent set-point changes.