

### How to Calibrate Analog Lab Ovens

Analog controls are most accurate in a single temperature setting. If the chamber temperature is off by 15 degrees Fahrenheit or more from the number printed on the dial, you can calibrate the unit to make the temperature number on the dial match the chamber's temperature as measured by a known accurate device.

**It is best to calibrate the dial at the most frequently used temperature, using a measuring device known to be accurate.**

#### Understanding the Knob

For 10GC and 10AF ovens, the numbers on the dial represent a power setting of 1 through 10. For all other models, the numbers represent the temperature in degrees °F (Fahrenheit) on the dial and °C (Celsius) on the back panel. (Fig A)

**⚠** The numbers printed on the unit's dial are only to be used as a reference and do not represent an actual temperature inside the unit. Use the thermometer provided with the unit to obtain a true temperature from inside the oven.

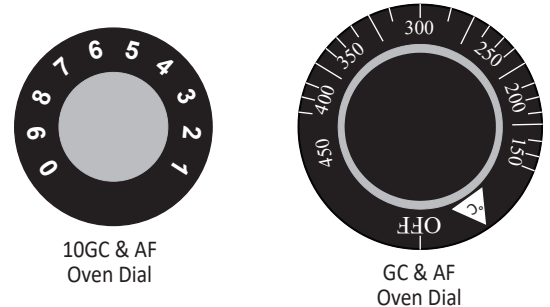


FIG. A

#### Adjusting Temperature Range

Perform the following steps to adjust the temperature range of your unit:

##### STEP 1

Set the dial to the most frequently used temperature. (FIG. B)

##### STEP 2

Remove the knob with a 5/64" Allen Key (FIG. C)

##### STEP 3

Remove the the compression pin (newer models only). (FIG. C)

##### STEP 4

Using a small blade screw driver, adjust the trim screw in the shaft center. **Make slight 1/8th turn adjustments at a time.**

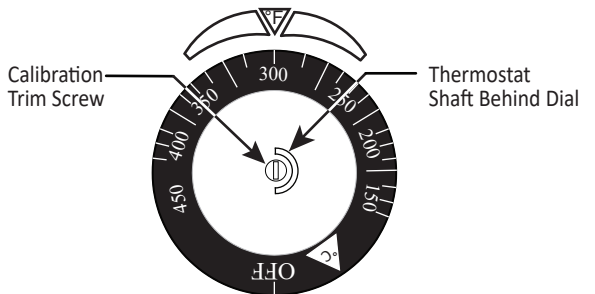
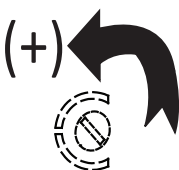


FIG. B

a) Turn the trim screw counter-clockwise to adjust the temperature UP.



b) Turn the trim screw clockwise to adjust the temperature DOWN.

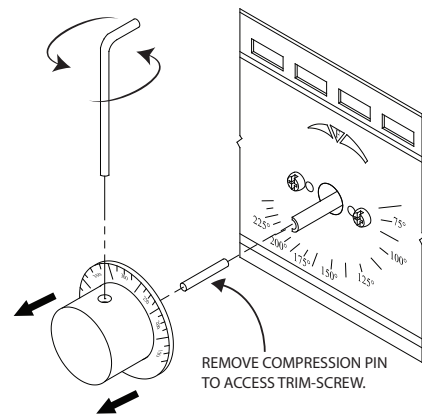
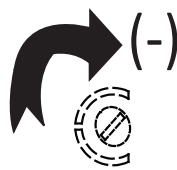


FIG. C

#### **⚠ IMPORTANT**

- Make sure the screw recessed in the shaft has moved after adjustment.
- Allow the temperature to settle before making any subsequent adjustments.

#### Technical Support

**Email:** [information@quincylab.com](mailto:information@quincylab.com)

**Voice:** 800-482-4328 Opt 2

Quincy Lab, Inc.

109 Shore Dr. Burr Ridge, IL 60527