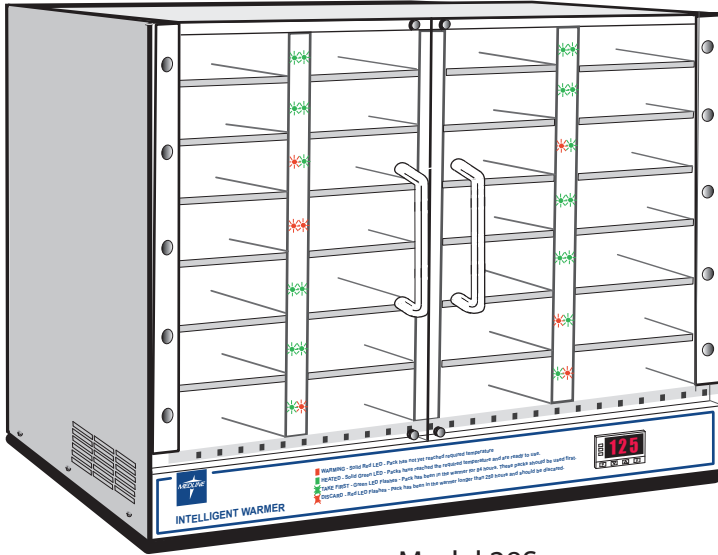
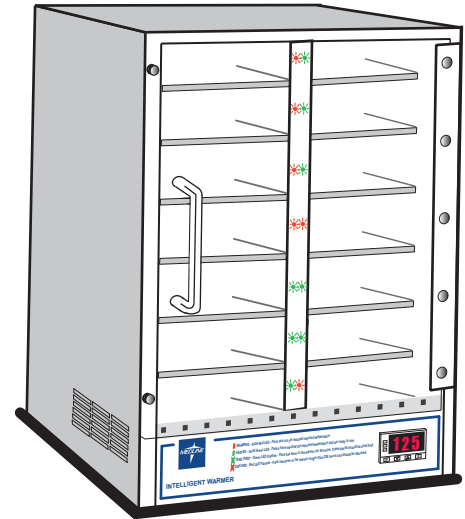


Models MSCWARMER 14S & 28S Operating Manual



Model 28S



Model 14S



Operating Specifications

Power Source:	AC 115 (+/-10%), 60HZ, Max Watts: 300 (14S and 28S)
Maximum Temperature:	52°C / 125°F
Operating Environment:	Indoor use, altitude up to 6,500 ft (2,000m). Installation Category II, Pollution Degree 2, ambient Conditions 10°C / 50°F to 35°C / 95°F, 80% RH maximum.
Storage Temperature:	-10°C / 14°F to 70°C / 158°F, 70% RH maximum
Approvals:	Underwriter's UL / CUL, United States / Canadian for laboratory equipment.
Compliance:	UL Standard 61010-1, IEC 61010-1 .

Unit Construction

Exterior: Powder Coated Steel	Interior: Aluminum
Insulation: Fiberglass	Door: Acrylic
Thermo-control: PID Microprocessor	Heater: Resistive-Tubular Incoloy

Unit Specifications

MHSe WARMER14S	MHSe WARMER28S
Capacity: 14 ReadyBaths	Capacity: 28 ReadyBaths
Exterior Dimensions: 12.87"(32.6 cm)W x 18.00" (45.7 cm)H x 13.43" (34.1 cm)D	Exterior Dimensions: 22.14" (56.2cm)W x 18.00" (45.7 cm)H x 13.25" (33.6cm)D
Shipping Weight: 29 pounds / 13.1 kg	Shipping Weight: 34 pounds / 15.4 kg
Net Weight: 23.5 pounds / 10.6 kg	Net Weight: 28.5 pounds / 12.9 kg

**WARNING**

Warns of a possible electrical shock

**IMPORTANT**

Refers to an important note in the usage of the unit

**WARNING**

Warns of a possible risk of fire

Safety Precautions  **Read Operating Instructions Thoroughly Prior to Operating Intelligent Warmer.**

Before you start the unit remove all packing materials and examine the unit for any damage such as broken door handles, missing door magnet and/or dents. Notify your Medline representative if warmer is damaged.


Warmer is intended to heat ReadyBath products to a patient-safe temperature and uses a system of safeguards to protect against an over-temperature condition. Additionally, when using ReadyBath products from the warmer, closely monitor product heat levels with infants, unresponsive, or skin-sensitive patients. Remember that gloves will diminish sensitivity to heat. Read the product package for the proper use of ReadyBath products and other important product information.


The warmer is designed to be used exclusively with Medline's premium ReadyBath products. If this equipment is used in a manner not specified herein, the safety protection provided by the unit may be impaired. Do Not use warmer in conjunction with any other products. Do Not operate Warmer in close proximity to any flammable solvents, gases or materials. **Plug unit into a grounded outlet - do not use an extension cord.**


Set-Up & Installation

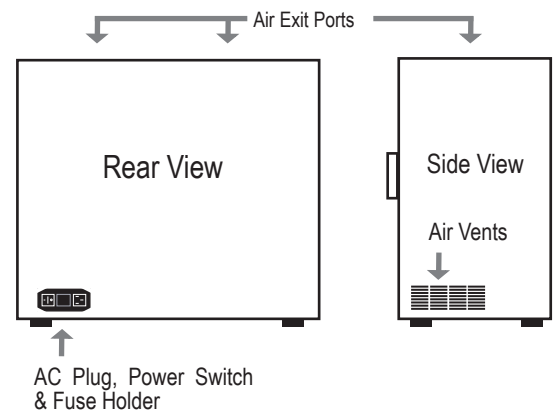
The Warmer's operating location should have a minimum of 3" of airspace on the rear and side panels of the warmer. Do not position warmer so that it is difficult to operate the power switch located in the rear of the unit. Air vents located on these panels are important to component ventilation and should not be obstructed. The warmer can be partially placed under wall cabinets to the extent the port holes at the top of the unit are not covered. A small amount of warm air is expelled through these top-side ports.

Install the female end of the power cord in the AC power module located at the rear of the warmer. The power module also contains the unit's fuses. See serial number label at rear of unit for the unit's required voltage.

 Avoid an operating location that may subject the warmer to direct sunlight or harsh incandescent type lighting. This can disrupt the warmer's slot sensors.

 Warmer must be plugged into a grounded outlet.

 Improper use of the grounding plug can result in an electric shock.

**General Operation**

Warmer is ready for immediate use. All control parameters, calibration and tuning have been done at the factory. No adjustments are necessary.

Power the warmer using the power switch located at the rear of unit. Upon startup, the LED's on the sensor uprights will illuminate, both red then green, and self-test until the current chamber temperature is displayed.

Warmer will begin heating to it's factory preset temperature of 125 degrees Fahrenheit. This factory-set temperature is considered 'optimum' for all Medline ReadyBath products, but can be adjusted within a predetermined range between 100 and 125 degrees F. The temperature display can also be changed to read in degrees Centigrade.

An empty unit will achieve the set-point temperature in approximately 60 minutes, (about 90 minutes with product). Once equilibrium is achieved, the unit will hold set temperature within +/-1 degree.

 **During the course of use, adding product will typically lower the displayed temperature temporarily.**

ReadyBath Safety Alarms Reset**ELECTRONIC FAIL SAFETY ALARM**

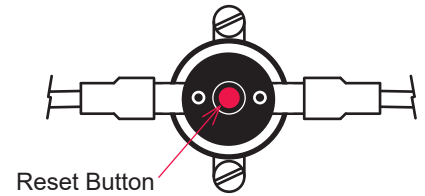
If Warmer exceeds its maximum allowable temperature of 142°F, the "ALM" light will come on, and internal programming in the controller will cut power to the heat element until the Warmer is manually reset. To do this, allow warmer to cool below the set temperature and turn unit OFF and ON again.



ReadyBath Safety Alarms Reset (CONTINUED)

THERMO SAFETY ALARM

As a secondary safety, the unit incorporates a thermo safety shut-off. In the event of electronic failure, an internal “snap disc” will cut off power to the unit until it is manually reset. To reset warmer, unplug the unit, lay it on its back, and remove the bottom cover. Locate the round “snap disc” and push in the button to reset.



Thermo Fuse (Snap Disc)

WARNING:

RISK OF ELECTRICAL SHOCK. DISCONNECT UNIT FROM POWER SOURCE BEFORE REMOVING COVER. FAILURE TO COMPLY COULD RESULT IN SERIOUS INJURY OR DEATH.

ReadyBath Product Loading and Retrieval

Within the product chamber, each ReadyBath product slot has a status-indicating, bi-color L.E.D located on the sensor uprights along side of the product slot. They are designed to clearly designate both 'product-ready' status, and when product is past its usage time and should be discarded.

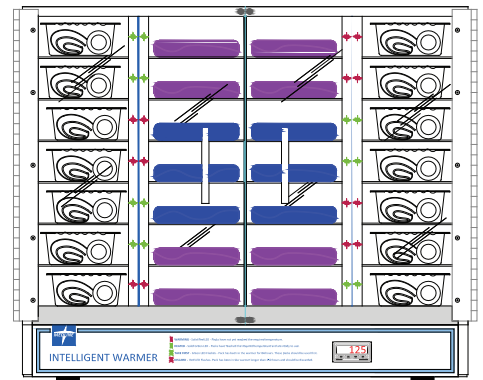
When stocking the warmer open door(s) and fill slots in any combination with ReadyBath products.

ReadyBath products are to be inserted into the slot until they stop at the rear of the shelves. Place the ReadyBath product on shelves so they do not interfere with the closing of the door(s).

Only use one product per slot. It is essential that each product is placed correctly into each of the warmer slots so that the sensor can “see” the product and start its warming timer.

ReadyBath products take approximately 60 minutes to warm. Once product has been warmed and is ready for use, simply open the door and remove product from slot, the indicator light will go off and it is ready for next product to be inserted.

WARNING: Medline warmer can be stocked in any order, but only one product per slot.



If the red indicator light fails to light when product is inserted move Bedbath product slightly left to right until light activates.

Indicator Sensor Status

ReadyBath Warmer is equipped with indicator sensor status L.E.D lights that provides you with information on the status on the packages in the unit.

Each time a package is inserted, the warmer will “see” the product and begin its warming process activating the indicator light. The following is a description of each of the L.E.D light sequences.

WARMING - Solid Red L.E.D

When the desired quantity of ReadyBath products are inserted the status indicator will illuminate SOLID RED. This indicates they are being warmed to desired temperature. The time to fully heat product will be approximately 60 minutes.

HEATED - Solid Green L.E.D

When fully heated, the status indicator will illuminate SOLID GREEN indicating these products are ready to use.

TAKE FIRST - Flashing Green L.E.D

When the slot indicator is FLASHING GREEN, this indicates the product should be used first, as they have been in the Warmer in excess of 84 hours.

DISCARD - Flashing Red L.E.D

When any bath product has been inserted more than 250 hours, the status indicators will begin FLASHING RED. This indicates the product has been inserted in the Warmer for more than 250 hours, and should be discarded

Product Loading Tips:

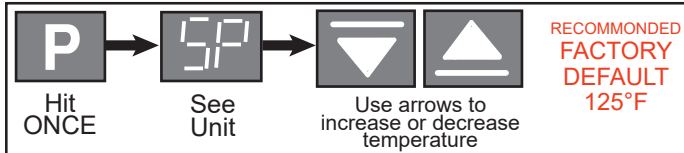
To assure the very best product quality, load only enough ReadyBath product to care for the current patient census or scheduled baths over a three to four day period. Load all ReadyBath products so the peel label is to the top. The label material and adhesive can permanently stain the aluminum slot shelf.

Controller Functions Buttons

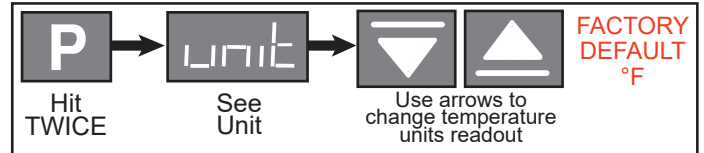
The warmers' controller allows you to set and change the units operating temperature between 100°F and 125°F, and change the read out units to either °C or °F. These are the only settings that can be changed. There are other controller settings that are visible, but for safety and operational purposes can not be changed.



TO ENTER SET-POINT TEMPERATURE



TO CHANGE TEMPERATURE READ OUT



⚠ To return to temperature display, after making any change, simply press the P button until you see the warmer's temperature on the display. If you are in an area of the MENU not shown press and hold P until you see the warmer's current temperature. ⚠

Control Self Diagnostics Control prompts will only display when a fault or alarm condition exists.

The control's self diagnostics are part of Intelligent Warmer's "watch-dog" system that continuously monitor the warmer's operating system, temperature and performance. In the event of any of the operating alarm conditions, an alarm prompt will continuously appear on the control display. The alarm conditions are described below. All alarm conditions will automatically discontinue heater operation.

ALARM Codes "Err1" & "Err6"

Indicates **Connection Error**
Check the wiring connections

ALARM Code "- - - -"

Indicates **Open Input / No Sensor Error**
Check connection between Controller and Thermocouple

ALARM Code "E111"

Indicates **Internal Memory Error**
Turn Controller OFF and On. If problem remains, replace Controller

ALARM Code "Err4"

Indicates **Watchdog Error**
Controller needs to be replaced

ALARM Code "Err8"

Indicates **Thermocouple Sensor Error**
Turn off and wait until ambient temperature recovers

ALARM Code "nnnn" & "vvvv"

Indicates **Sensor Temp Over/Under Error**
Increase or reduce process temperature to get back in range

Warmer Maintenance

Periodic cleaning is the only required maintenance for the Warmer. ⚠ Disconnect the power cord before cleaning. To clean interior and exterior surfaces, use a soft damp cloth. Avoid excessive amounts of water that could drip into the lower plenum. Use a mild detergent or cleaner if necessary.

The door should only be cleaned using a lint-free cloth. Paper towels can mar the surface of the door. Do Not use any commercial or alcohol-based cleansers on the door. This will cause cracking of the acrylic over time.

Technical Support

For questions regarding:

General Product Information, please contact:

Medline Industries, Inc. Three Lakes Drive,
Northfield, IL 60093

1-800-MEDLINE (633-5463)
medline.com | info@medline.com

Technical Support/Parts Order, please contact:

PH: 1-800-482-HEAT FAX 773-622-2282