

# Quick Start Guide



## Content

- (1) Digital Incubator
- (1) Nickel-Plated Wire Shelves
- (2) Wire Shelf Supports

## Cautions

- ⚠ Use caution when lifting or moving the incubator.
- ⚠ Only use a grounded outlet rated for your unit's electrical requirement.
- ⚠ Do NOT place volatile or combustible materials inside the incubator.
- ⚠ **Acrylic door caution**  
To avoid damage to the acrylic door, do not expose it to high-moisture applications, ammonia, alcohol derivatives, certain oils, commercial cleaners, urine, or other harsh chemicals.

## Before you power the unit ON

- Ensure you have removed all the packaging items from the incubator before use.
- Ensure the fuse and the red fuse holder are securely in place at the back of the incubator.

## Setting up the unit

- Place unit on a flat, solid surface.
  - Maintain a minimum of 3 inches of separation around the units walls and 8 inches above the unit.
  - Plug the incubator into a grounded outlet for your unit's rated voltage. Isolate your incubator to a separate, appropriately rated circuit or breaker.
- ⚠ The electrical specifications can be found on the label located at the back of the incubator

For full manuals and guides, please visit:  
<https://quincylab.com/incubators-1>

For general certifications, please visit:  
<https://quincylab.com/certifications>

-OR-

Scan the QR code to access the full operating manual and guides page



# Digital Incubator

10-140E, 10-180E, 12-140E, 12-180E

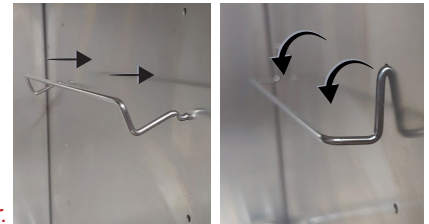
- ⚠ The top hole can be left open or closed without affecting the unit's performance. It simply allows warm/moist air to escape by natural convection.



## Quick start-up

- 1 Insert the incubator's shelf supports (as shown to the right) at the desired height and place the shelf on top.

*For best processing performance have the shelves placed at the center of the incubator.*



- 2 Press the power button on the front of the unit to power ON the incubator.
- 3 Set the desired operating temperature on the controller.

*Upon powering on, the incubator will automatically heat to the factory preset temperature. Follow the steps below to adjust the setpoint temperature.*



## How to change the temperature Setpoint

1. Press **P** until **SP** appears on the display.
2. Use **▲** or **▼** keys to set the temperature setpoint.
3. Press **P** continuously until you return to the process value.

- ⚠ The lights on the left hand side of the controller **OUT** and **RUN** indicates normal operation. A slow flashing **OUT** light indicates normal operation.



- ⚠ Allow a minimum of 20 minutes for the incubator's temperature to stabilize before making any subsequent set-point changes.

## Contact

**Quincy Lab Support:**  
800-482-4328 | [information@quincylab.com](mailto:information@quincylab.com)