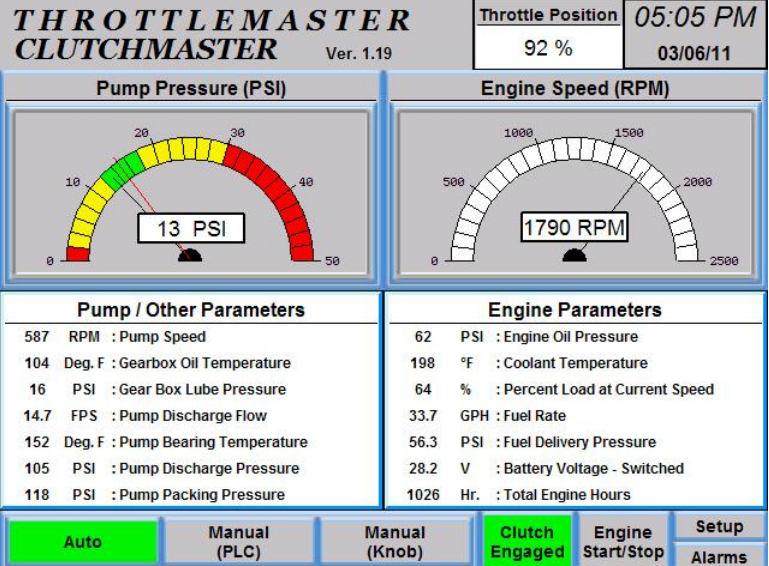


# THROTTLEMASTER

## Automated Engine Throttle Control



## INCREASE BOOSTER PUMP PERFORMANCE

The **THROTTLEMASTER** by **Cornerstone Industries** controls the booster pump inlet pressure by automatically adjusting a diesel engine or electric motor RPM to maintain a targeted pump inlet pressure. A PLC communicates the pump inlet pressure changes to the diesel engine electronics or the electric motor drive to adjust the RPMs to maintain the targeted inlet pressure.

Accordingly, the RPM changes in fine increments when small inlet pressure changes occur and rapidly when large pressure changes occur. In doing so, the **THROTTLEMASTER** protects the booster pump and pipeline from damage, reduces pump cavitation and prevents water hammers.

With the optional **THROTTLEMASTER** remote system, a booster pump can be controlled and monitored wireless from a remote location such as a dredge cabin or an operation control building.

Call today to find out more!

- Maintain selected booster inlet pressures under various feed conditions
- Eliminate personal supervision
- Reduce fuel consumption
- Reduce booster pump wear
- Prevent booster pump cavitations
- Control and monitor booster pump remotely



**Cornerstone  
Industries™**

641-828-6402 or 515-314-4213

Otley, Iowa