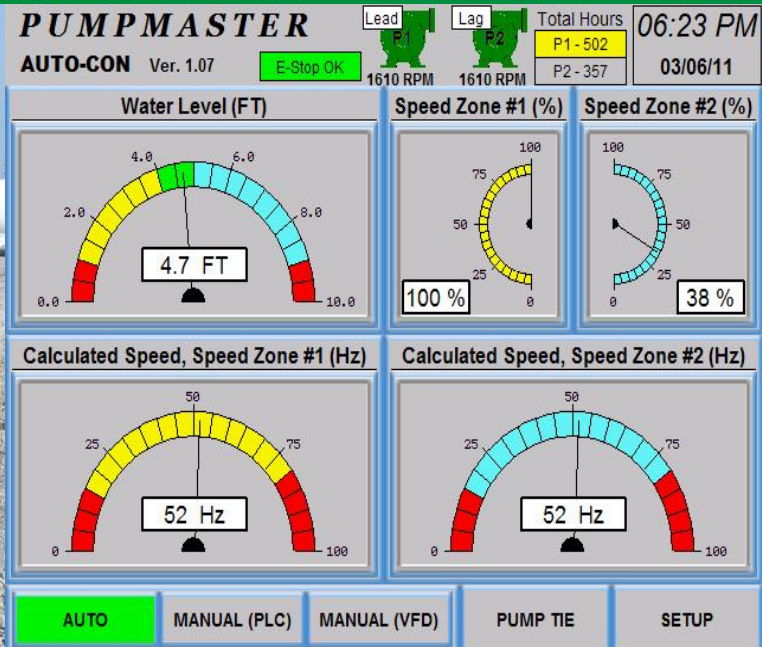


# PUMPMASTER

## Automated Pump Level Control



## MAINTAIN PRECISE WATER LEVEL IN ANY VESSEL, POND, OR LAKE!

The **PUMPMASTER** by **Cornerstone Industries** uses a PLC to communicate with a variable frequency drive (VFD) (electric motor) or electronic throttle controller (diesel engine) to maintain preferred water levels in a vessel, pond, or lake. A submersible hydrostatic pressure transducer, rather than unreliable floats and switches, continuously monitors the water level and communicates back to the PLC. The PLC controls the VFD or electronic throttle controller to increase or decrease the motor or engine RPM to maintain the preferred water level. If necessary, the **PUMPMASTER** will automatically shut down the pump so it does not cavitate.

An operator interface touch screen allows a user to set parameters to control when the pumps turn on and off. If multiple pumps are required, the **PUMPMASTER** will activate a second pump to maintain the preferred water level. When a second pump is no longer needed, the **PUMPMASTER** will automatically turn it off.

The **PUMPMASTER** software, PLC, and submersible hydrostatic pressure transducer constantly work together to ensure that the vessel, pond, or lake remains at the preferred water level. Call **today** to find out more!

- Eliminate personal supervision
- Operates in conjunction with most VFD manufacturers
- Eliminate on/off switches and floats by utilizing a submersible hydrostatic level transmitter
- Remote control via radios (optional)



**Cornerstone  
Industries™**

641-828-6402 or 515-314-4213

Otley, Iowa