

November 2025

Issue 3

# *The Bold Educator*

Empowering Educators. Reigniting Purpose. Sparking Bold Change.



[WWW.PEAKPRODEVELOPMENTS.ORG](http://WWW.PEAKPRODEVELOPMENTS.ORG)

# *WELCOME TO THE BOLD EDUCATOR*

*Every month, we rise together.*

*We challenge old standards, build new skills, and strengthen our purpose in this field.*

*We lead with heart, courage, and excellence – because children and families deserve our very best.*

*This space is for learners.*

*For leaders.*

*For educators committed to growing boldly, serving boldly, and showing up with vision and intention.*

*Thank you for continuing this journey with me.*

*Thank you for choosing to lead boldly.*

*– Natoya Carroll*

*Founder, Peak Pro Developments*



# *Meet the Team Behind Peak Pro Developments*

*Leaders. Thinkers. Advocates. Elevating Early Childhood Together.*



**WINN CASTAGNO**

**DISABILITY INCLUSION &  
SPECIAL EDUCATION**



**LATORIS TEAGUE**

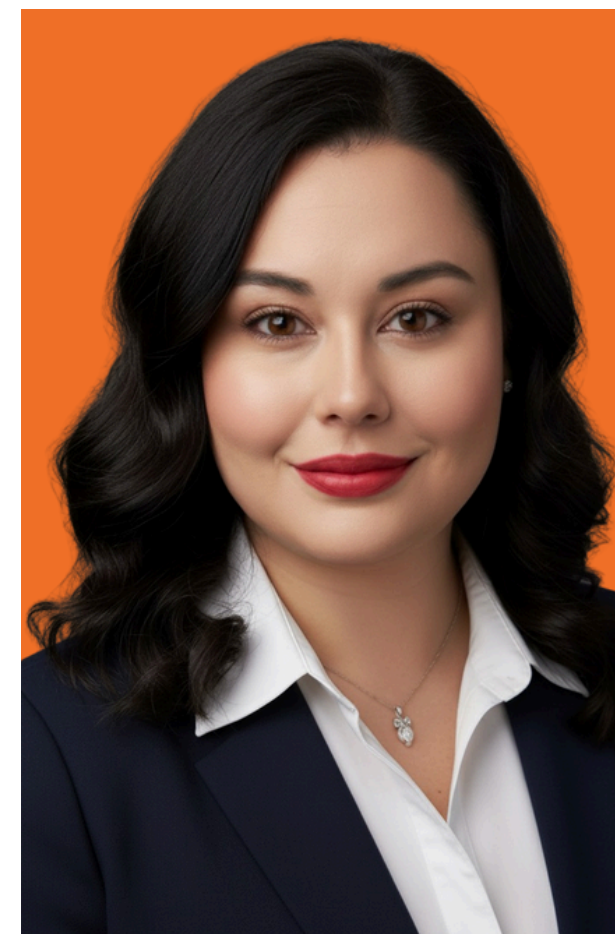
**C-OWNER, RBT, BEHAVIORAL  
HEALTH & AUTISM SUPPORT**



**MAGGIE DE**

**LA CRUZ**

**LEADERSHIP DEVELOPMENT &  
COMMUNITY PARTNERSHIP**



**ADRIANA**

**MALDONADO**

**FAMILY PARTNERSHIP &  
REFLECTIVE PRACTICES**

*At Peak Pro Developments, we believe powerful training starts with powerful people.*

*Our team brings experience, passion, and purpose into every learning space, always centering children, families, and the educators who serve them.*

*Together, we elevate quality.*

*We strengthen systems.*

*We stand for excellence in early childhood.*

# *Spotlight: Winn Castagno*

## *Disability Inclusion & Special Education Specialist*



*Winn brings deep expertise in disability inclusion and child development, supporting educators in creating learning environments where every child can participate, grow, and succeed. With experience across diverse early childhood settings, she helps teams understand developmental differences, implement supportive strategies, and partner effectively with families and service providers.*

*Her approach is grounded in equity, compassion, and high expectations – ensuring that inclusion is intentional, meaningful, and embedded in everyday practice.*

*Inclusion isn't a placement – it's a practice.*

# *Spotlight: Latoris Teague*

**Co-Owner, Behavioral Health & Autism-Informed Support Specialist, RBT**



*As Co-Owner of Peak Pro Developments, Latoris brings over two decades of mental-health expertise and early childhood experience to the field. She supports educators in understanding behavior through a compassionate, trauma-aware lens, helping classrooms become emotionally safe, structured, and responsive learning environments.*

*She equips professionals with practical, relationship-centered strategies that honor children's emotional needs while strengthening classroom peace and connection.*

**Connection before correction. Always.**

# *Spotlight: Maggie De La Cruz*

## *Leadership Development & Community Partnerships Specialist*



*Maggie brings extensive leadership experience and a strong commitment to community engagement in early childhood education. With a background in program leadership and board service, she strengthens organizational culture, fosters professional growth, and builds strategic relationships that expand opportunities for families and early childhood professionals.*

*Her guidance helps programs lead confidently, connect authentically, and create systems where staff and families thrive.*

*Leadership grows when connection leads the way.*

# *Spotlight: Adriana Maldonado*

## *Family Partnership & Reflective Practice Specialist*



*Adriana strengthens the bridge between home and school by cultivating meaningful, culturally responsive relationships with families. She supports educators in building trust, listening deeply, and honoring the strengths and goals families bring to their children's learning journey.*

*With a grounded, reflective approach, Adriana helps programs create environments where families feel respected, engaged, and empowered as partners in early childhood success.*

*Families are partners in growth – not participants in programs.*

# *Spotlight: Natoya Carroll*

*Early Childhood Leader & Professional Development Specialist*



*With nearly two decades of experience in early childhood education, family engagement, and program leadership, Natoya is dedicated to empowering educators and strengthening family-centered practice in early learning settings.*

*Her work centers on purpose, excellence, and community — equipping educators and leaders to grow boldly, serve deeply, and elevate the standard of care and education across early childhood programs.*

*We rise when we lead with purpose and stand in our power.*

# *Start Strong: A Strategy for New Educators*

**Predictable Routines + Modeling = Confidence & Calm**

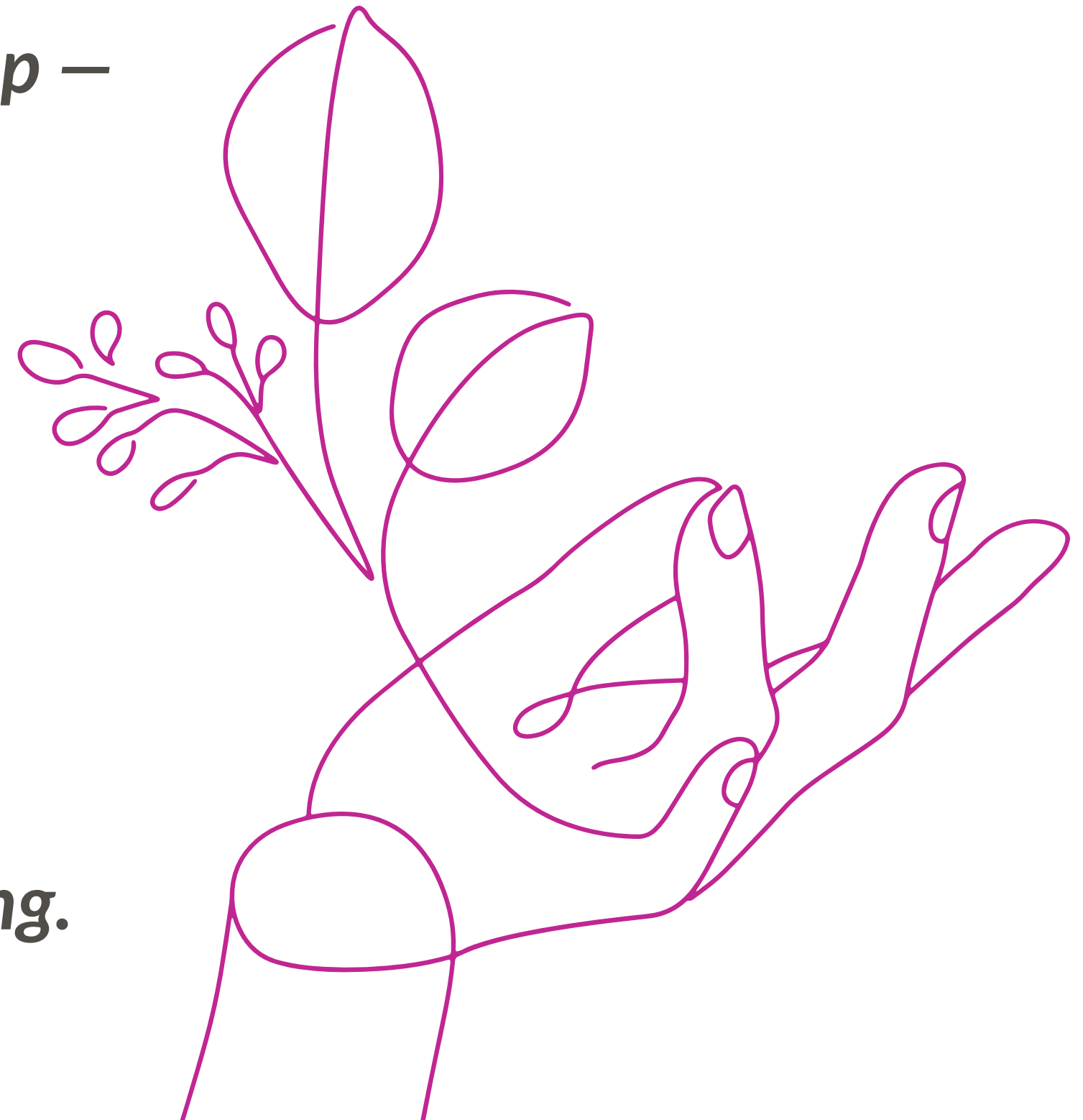
**Choose one routine – arrival, transitions, or cleanup –  
and teach it like a lesson:**

- 1. Show: “Watch me first.”**
- 2. Do Together: “Let’s try it together.”**
- 3. Release: “Your turn – I’ll support if needed.”**

**Start small. Stay consistent.**

**Predictability builds trust – and trust builds learning.**

**Clarity reduces behavior. Predictability builds peace.**



# *Elevate Practice: A Strategy for Experienced Educators*

## *Refine, Reflect, Reset*

Choose one challenging moment in your day and pause to examine it.

Ask yourself:

- *What behavior am I seeing most often?*
- *What is the need underneath the behavior?*
- *What small shift can I try to support success?*

Implement one improvement for 5 days.

Observe. Adjust. Continue.

Mastery isn't a leap – it's refinement in motion.

*Great educators never stop evolving – they refine with intention.*



# *For Family Advocates: Building Bridges With Families*

## **Intentional Listening + Strength-Based Support**

**Choose one family this week and focus on deep listening.**

**Use the Three A's Framework:**

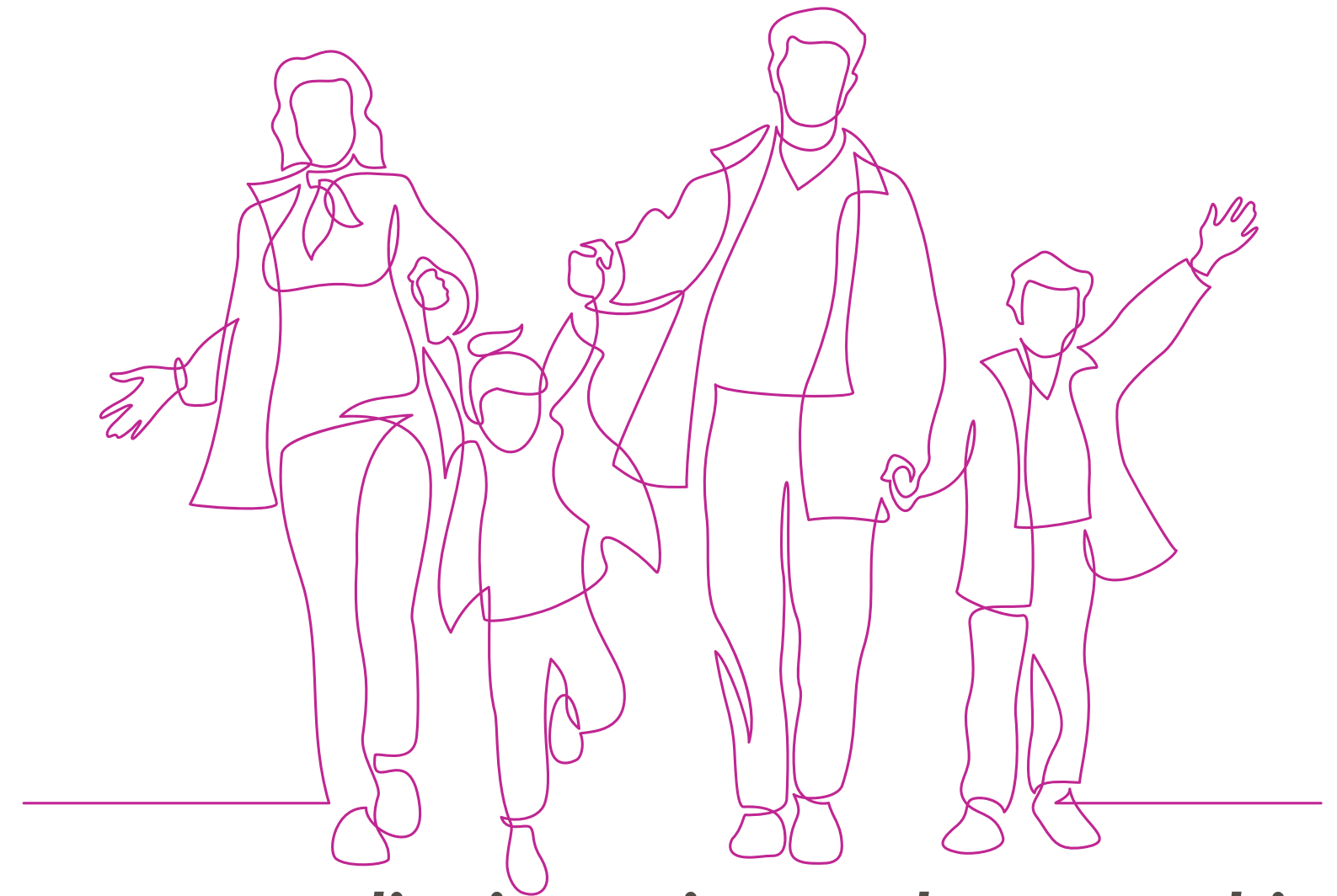
- **Affirm what they are doing well**
- **Acknowledge the challenges they face**
- **Ask how you can support their goals**

**Shift from “How can I help you?”**

**to**

**“What matters most to your family right now?”**

**Every conversation becomes empowerment when we center dignity, voice, and partnership.**



**Families thrive when they are seen, heard, and valued.**

# *Family Connection Activity*

## *Strength Stories: Partnering With Families Through Reflection*

*Invite families to share a snapshot of their child's growth through their eyes.*

*Provide this prompt card (digital or printed):*

### *My Child's Strength Story*

- *Three strengths I see in my child*
- *A moment I felt proud recently*
- *What helps my child feel confident*
- *One goal we are working toward together*



*Use this during drop-off, send home as a reflection card, or include in family conferences.*

*Families carry wisdom — we make space to listen.*

# *For Leaders: Elevating Teams & Culture*

**Lead with clarity. Coach with purpose. Grow with intention.**

**Choose one leadership priority this week and model it consistently.**

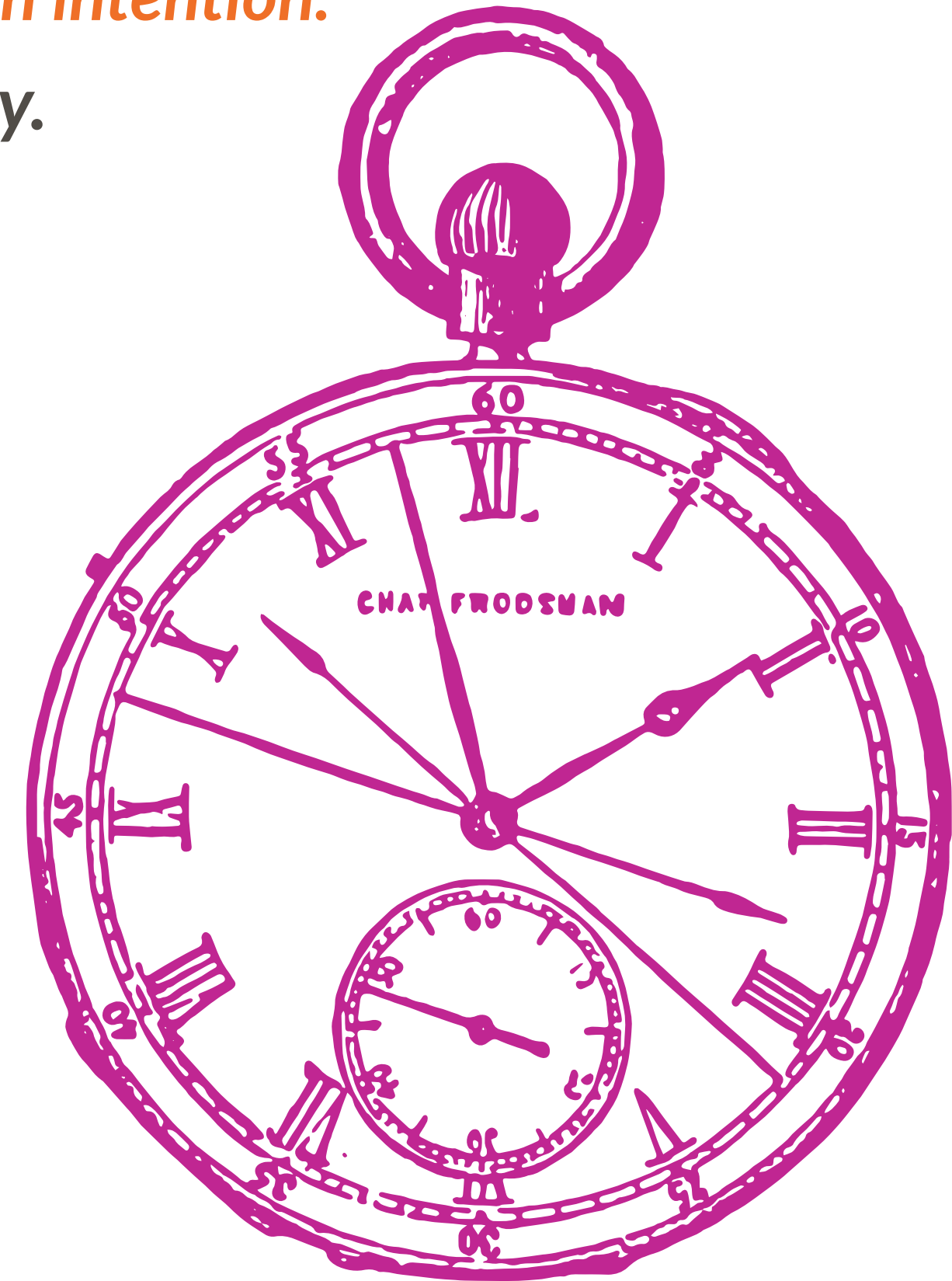
**Try this reflection:**

- **What behavior or mindset do I want to see more of?**
- **How can I model it first?**
- **What support or clarity does my team need to follow?**

**True leadership isn't telling.**

**It's shaping space for people to succeed.**

**Families carry wisdom — we make space to listen.**



# *Good Reads for Bold Educators*

*Fuel your purpose. Expand your lens. Grow your impact.*

## **Book Spotlights**

*“The Power of Showing Up” – Dr. Dan Siegel & Tina Payne Bryson*

*A compassionate guide to attachment, emotional presence, and the science of connection – powerful for teachers and family advocates alike.*

*“We Want to Do More Than Survive” – Dr. Bettina Love*

*An inspiring call to transform education through love, justice, equity, and culturally responsive practice. A movement-shaping perspective.*

*“The Visionary Director” – Margie Carter & Deb Curtis*

*A cornerstone text for childcare leaders—cultivating reflective, empowering, values-driven early childhood programs.*



*Families carry wisdom – we make space to listen.*

# *Thank You for Leading Boldly*

*Stay connected. Keep growing. Lead with purpose.*

*Your commitment to children, families, and this profession makes a difference.*

*Together, we are raising the standard of early childhood education – one bold educator at a time.*

*To bring Peak Pro Developments to your program or to join our upcoming trainings, connect with us:*

**[www.peakprodevelopments.org](http://www.peakprodevelopments.org)**

**737-390-9236**



***Bold educators don't just teach – they transform.***