

# Net Zero and Primary Care How to decarbonise?

Developing a roadmap

Dr Matt Sawyer

SEE Sustainability





# Dr Matt Sawyer

Medical doctor – GP for 15 years

Environmental MSc

Working on how to help primary care reach Net Zero

Runs sustainability consultancy

[seesustainability.co.uk](https://seesustainability.co.uk)

Carbon Literacy training

Carbon footprinting of practices





# The prize...

If the UK met its current climate commitments...

**Lives saved**

98,000 diet

21,500 exercise

3,500 air pollution

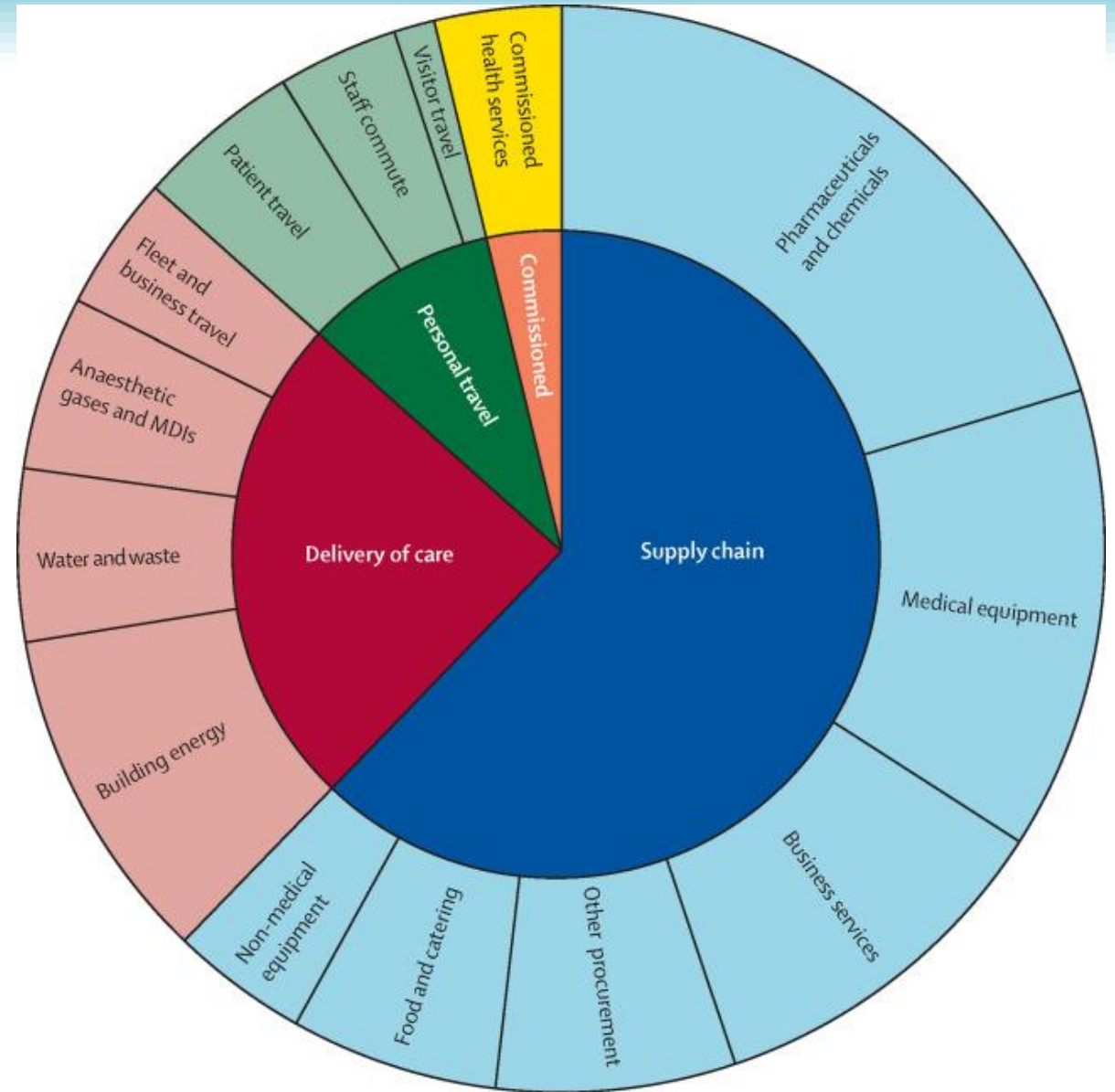




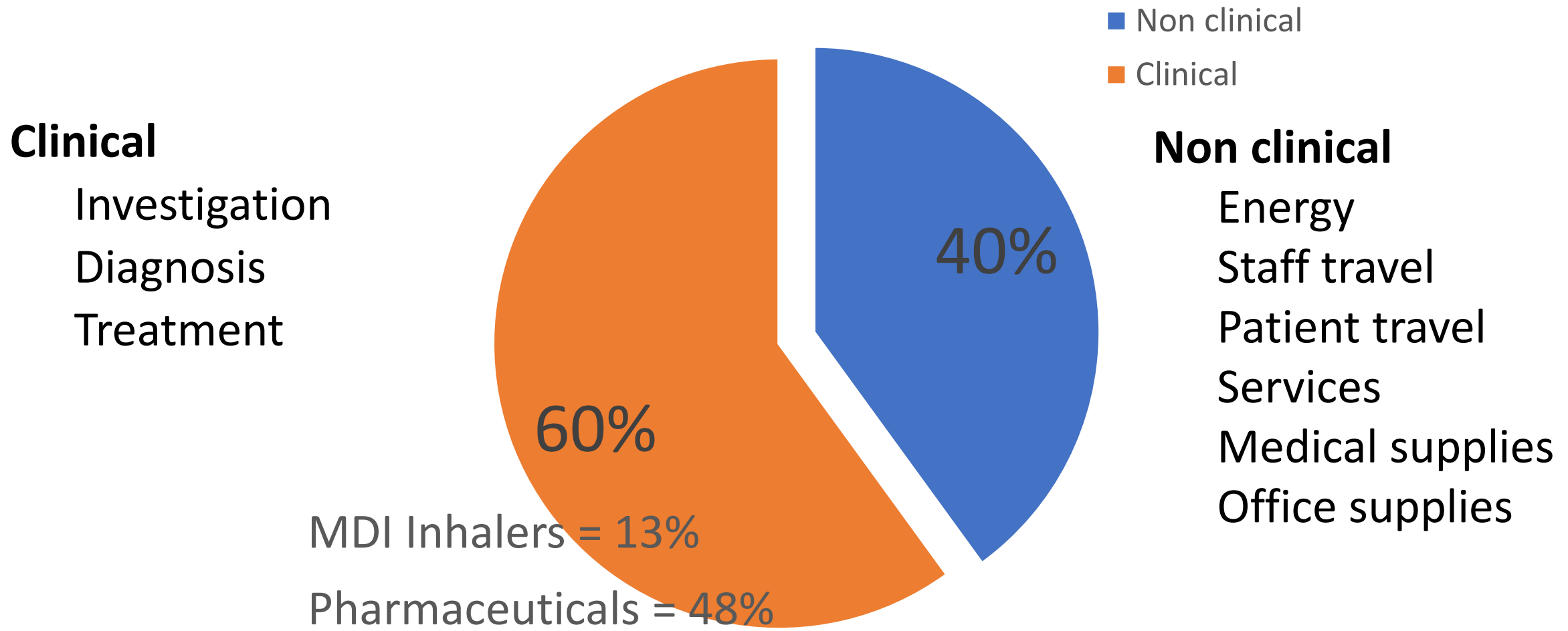
# Total carbon emissions

NHS total  
25 million tonnes

Primary care  
5.75 million tonnes



# Sources of carbon in primary care





Our emissions, our responsibility

To reach overall net zero,  
all parts need to reach zero





# Global Road Map for Health Care Decarbonization



**Develop national and subnational road maps**

**Make zero emissions commitments**

**Declare climate change a health emergency**





# HIGH-IMPACT ACTIONS



- 1. Power health care with 100% clean, renewable electricity.**
- 2. Invest in zero emissions buildings and infrastructure.**
- 3. Transition to zero emissions, sustainable travel and transport.**
- 4. Provide healthy, sustainably grown food.**
- 5. Incentivize and produce low-carbon pharmaceuticals.**
- 6. Implement circular health care and sustainable health care waste management.**
- 7. Establish greater health system effectiveness.**







We need a plan...



**DON'T  
KEEP CALM**

**DO SOMETHING**

**TO CHANGE THE WORLD  
FOR THE BETTER**





# A roadmap for primary care


**HEALTH  
DECLARES**  Climate &  
Ecological  
Emergency

1. Become aware  
Carbon literacy training
2. “Know your number”  
Carbon footprint of practices



Carbon Literacy  
Project

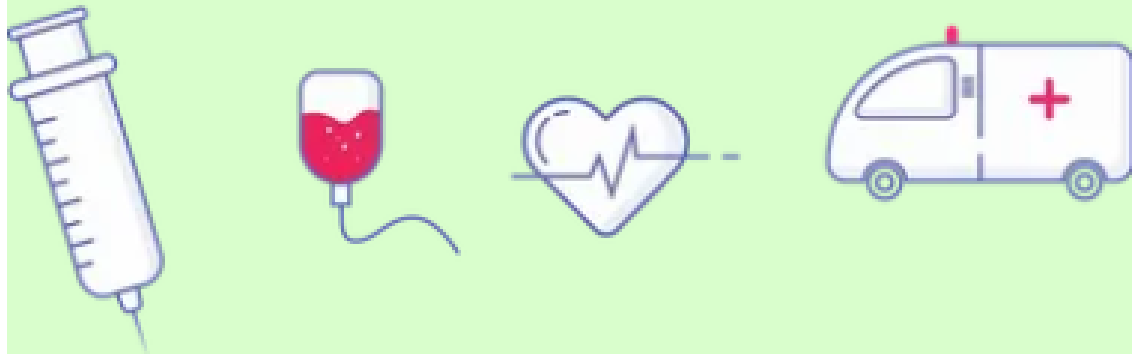


3. Turn intention into action –  
have a plan
4. Declare a climate emergency 



# 1. Carbon literacy

Online carbon literacy  
training for healthcare



SEE Sustainability

[seesustainability.co.uk](http://seesustainability.co.uk)

UKHACC

[www.ukhealthalliance.org/carbon-literacy-guide](http://www.ukhealthalliance.org/carbon-literacy-guide)

Centre for Sustainable Healthcare

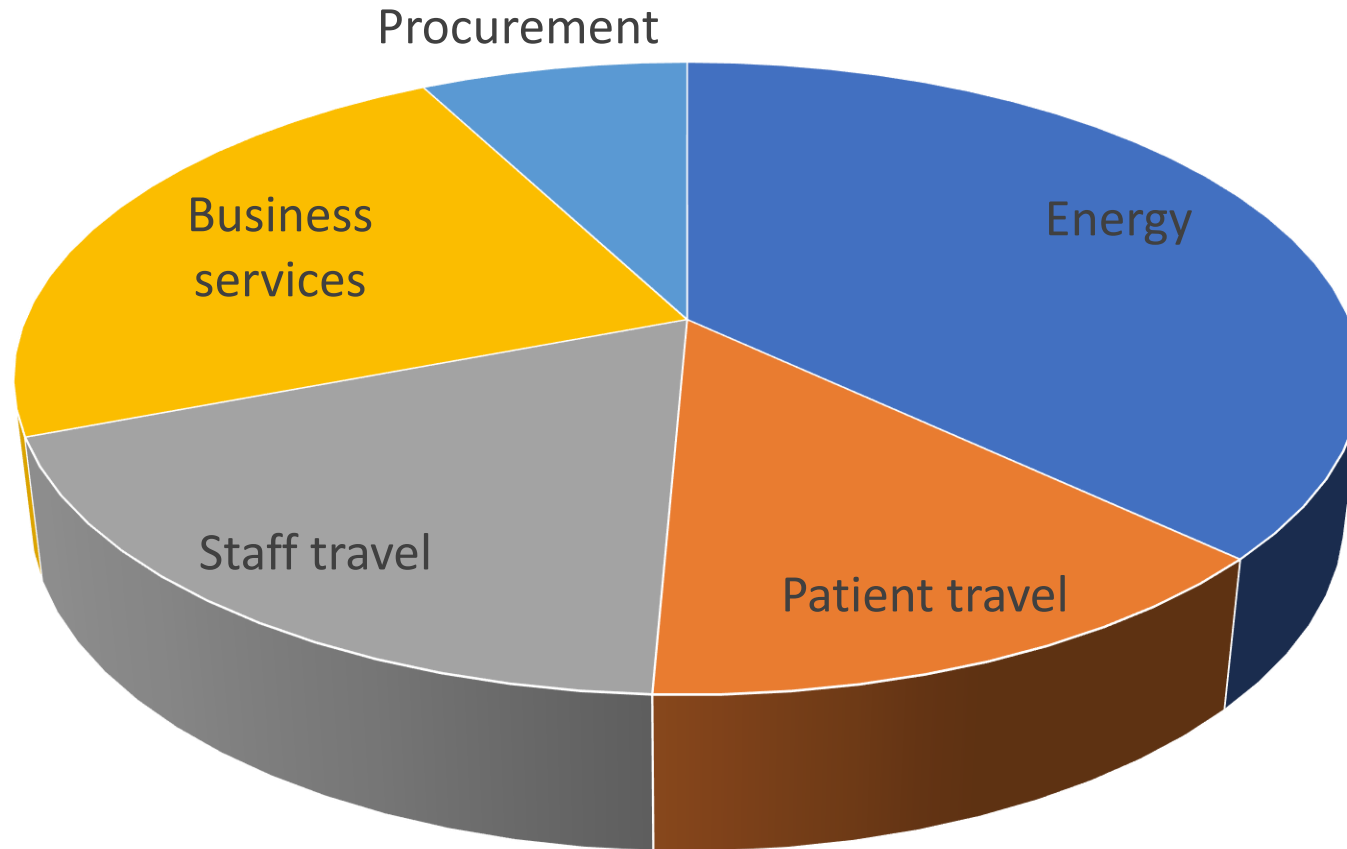
[sustainablehealthcare.org.uk/courses/introduction-sustainable-healthcare](http://sustainablehealthcare.org.uk/courses/introduction-sustainable-healthcare)

The Carbon Literacy Project [carbonliteracy.com](http://carbonliteracy.com)





## 2. Carbon footprint



Carbon hotspots in primary care

Summary of a carbon footprint pilot scheme of urban medical practices in Salford

V1.1





### 3. Practice 'Green Action Plan'

To reach overall  
net zero,  
all parts need to  
reach zero

Action Plan for the next year  
Example table of actions

	Action	When	Who	Completed?
<b>Prescribing</b>	Review SABA inhalers and acute exacerbations	Autumn	Resp lead	
<b>Patient travel</b>	Explore cycle racks for patients, promote walking scheme	End of June	Green lead	
<b>Staff Travel</b>	Map staff homes and see if can start shifts at same time	Feb	Office Manager	
<b>Professional services</b>	Letter to accountants asking what they are doing regarding their footprint	Done	PM	Yes
<b>Gas</b>	Review loft insulation and install thicker layer	Summer	Green lead	
<b>Electricity</b>	Change energy supplier to 100% renewable	Next week	PM	Yes
<b>Medical supplies</b>	Review disposable kits used and eliminate waste by recycling all	End of August	Lead nurse	





# Non clinical roadmap

## What?

- Carbon literacy
- Energy audit
- Staff travel audit
- Patient travel audit
- Medical procurement audit
- Office procurement audit

## How?

Education, turning intention into action

Trained ICS staff to assist e.g. 1° care energy manager

Create staff travel plans, sus. travel officer

Wider work to reduce travel distances

Pathway redesign

Greener procurement guide





# Clinical roadmap

In primary care

tonnes CO<sub>2</sub>e

MDIs

767

13% of primary care emissions

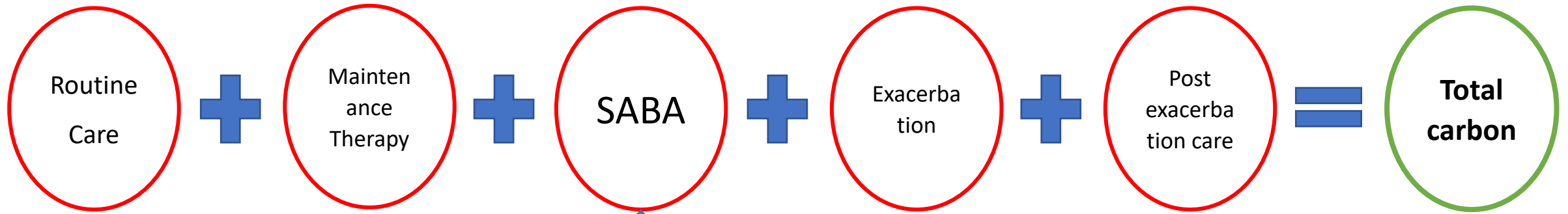
Pharm & Chemical 2750

48% of primary care emissions





# Improving respiratory patient outcomes



High uses of SABA (>3 per year)

BTS 2	44%
BTS 3	54%
BTS 4	57%

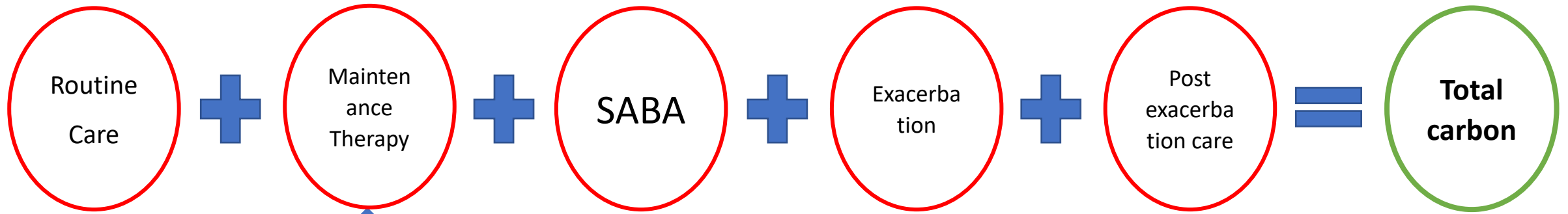
→ Doubles the risk of exacerbation  
Biggest reduction in emissions







# Improving respiratory patient outcomes



Inadequate control with inappropriate inhaler

MDI – 20kg

DPI – 1kg



Worse control

Higher emissions





## 4. Declare a climate emergency



The climate crisis is a health crisis





**Carbon Literacy  
Project**



**HEALTH  
DECLARES**



# Thank you

Dr Matt Sawyer

[matt@seesustainability.co.uk](mailto:matt@seesustainability.co.uk)

SEESustainability.co.uk

