



www.bonominet.it

Quick Tension System



QTH12

- INFORMAZIONI TECNICHE
- TECHNICAL DATA SHEET

- Hydraulic Chainsaw

Code A3M004



Bonomi s.r.l. Unipersonal Company

Head Office: Via Mario Pagano,63
20145 Milano
Italy

Facility: Via dell'Industria 2
14047 Mombercelli
Asti Italy

Phone: +39 0141 955 390

www.bonominet.it

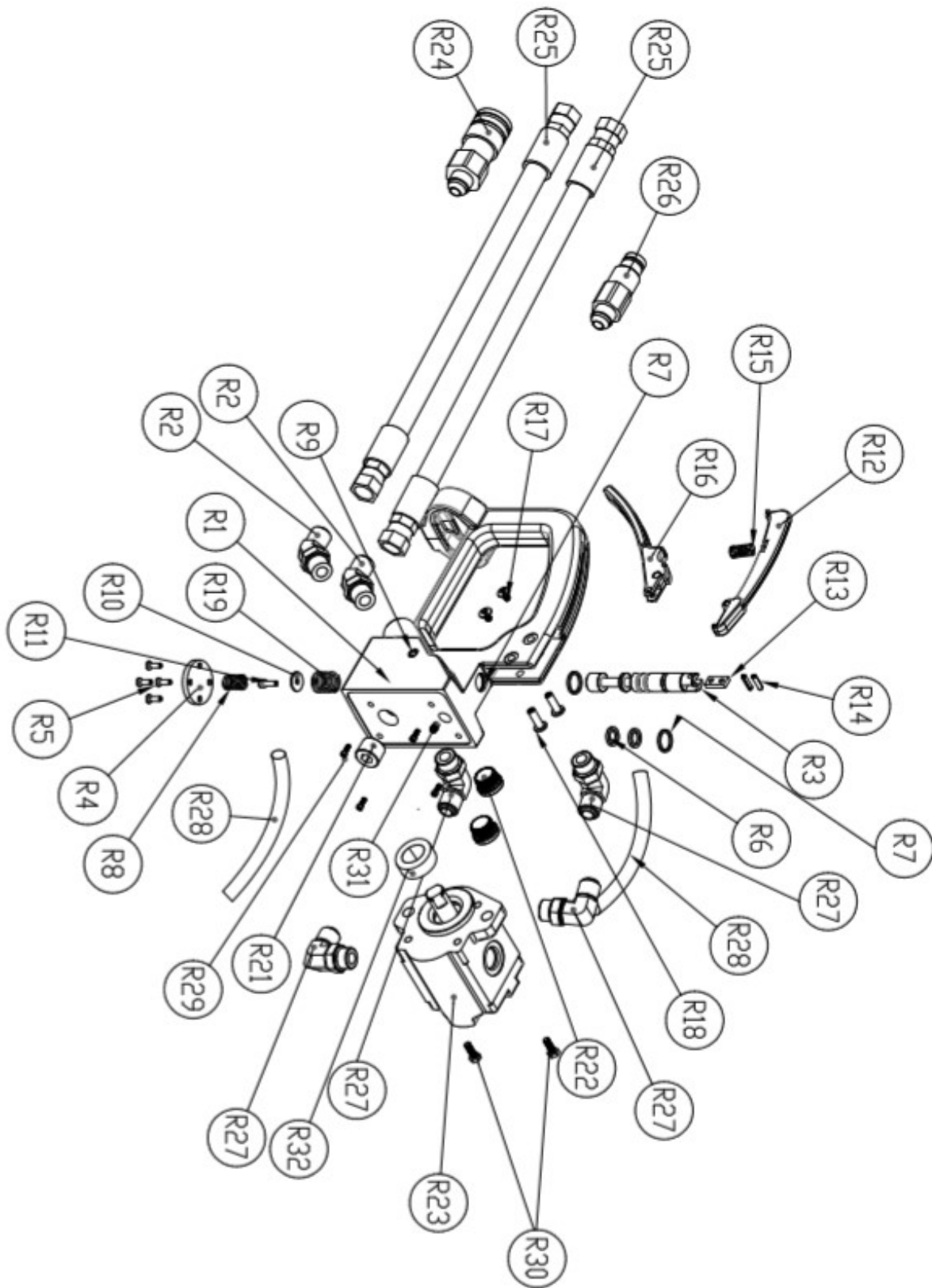

Dati Tecnici \ Performance data

MODELLO	MITO QTH 12
MODEL	A3M004
INFORMAZIONI TECNICHE—	
<u>TECHNICAL Data Sheet</u>	English (Metric)
PESO MACCHINA SENZA BARRA E CATENA Machine Weight without bar and chain	23 lbs (10,5 Kg)
MISURA DELLA BARRA— Bar sizes Range	10", 15", 20", 25" (mm 254, 381, 500, 640)
DIMENSIONI (con barra da 15") - Dimensions (with 15" guidebar)	46 x 10,25 x 12 in. (116,9 x 26,4 x 30,5 cm)
PROFONDITA' DI TAGLIO (con barra da 15") - Depth of cut (with 15" bar)	15 in (381 mm)
<u>CATENA Chain</u>	
NUMERO SEGMENTI PER CATENA DA 15" - Chain Segments number for 15 in. bar	57
PASSO MAGLIE CATENA - Chain pitch Suitable for the following	3/8, 0,444 , 0,456
SPESSORE DEI SEGMENTI— Chain Segment Width	0,225" - (5,8 mm)
<u>BARRA—Bar</u>	
INGRANAGGIO DI TESTA Nose Sprocket	Bearing


Dati Tecnici \ Performance data

MODELLO Model	MITO QTH 12 A3M004
<u>CARATTERISTICHE IDRAULICHE</u> <u>Hydraulic Specification sheet</u>	English (Metric)
SISTEMA TIPO—Type of system	Open center
PORTATA NOMINALE - Nominal Flow rate	12 gpm (45 lpm)
MASSIMA PRESSIONE DI RITORNO—back pressure Max	50 psi (3,5 bar)
LUNGHEZZA MASSIMA DEI TUBI— Hose length Max	100 ft (30 m)
GIUNTO—Coupling	1/2" HTMA flush face
<u>RAFFREDDAMENTO ACQUA—Water cooling requirements</u>	
FLUSSO ACQUA MINIMO — Minimal Flow rate	2,5 gpm (9,5 l/min)
PRESSIONE MAX — Pressure Max.	50 psi (3 bar)
<u>PRESTAZIONI - Operation</u>	
POTENZA A (172 bar) - Power @2500 psi	17 hp (12,5 kw)
TORSIONE ALL'ALBERO A (172 bar) - Torque @ 2500 psi	170 in.-lbs. (19,2 Nm)
VELOCITA' MASSIMA—Speed Max	6500 rpm
<u>VIBRAZIONI E SUONO—Vibration and Sound</u>	
LIVELLO DI VIBRAZIONE—Vibrtrion level (misurato durante iol taglio con barra da 15" e catena reverse 225B—cheked during cutting with 15" bar and chain RV 225B)	A=5,65 M/S ²
SUONO PERCEPITO DISTANZA 1 m —Sound pressure @1m (misurato durante iol taglio con barra da 15" e catena reverse 225B—cheked during cutting with 15" bar and chain RV 225B)	88dba
<u>OLIO IDRAULICO RACCOMANDATO—Recommended Hydraulic Oil</u>	
VISCOSITA' - Viscosity	140-225 SUS @100°F (28-45cSt a 38°C) 40 min. SUS @210°F (8 min.cSt a 99°C)
PUNTUNTO DI INCENDIO—flash Point	340°F (170°C)
PUNTO DI CONGELAMENTO—Pour Point	-30°F (-34°C)
MOLTI TIPI DI OLIO IDRAULICO SONO DISPONIBILI SUL MERCATO TRAMITE I LOCALI DISTRIBUTORI. COME FABBRICANTI DELLA MACCHINA SUGGERIAMO INDICATO. I TIPI DI OLIO IDRAULICI SONO TANTI PER ESSERE INDICATI IN QUESTO MANUALE —Many types of compatible hydraulic oil are available through your local dealer/distributor. As an original equipment manufacturer, we suggest the indicated one. Hydraulic oil types are too numerous to list in this manual.	GRADE ISO VG 32 Hydraulic turbine oil

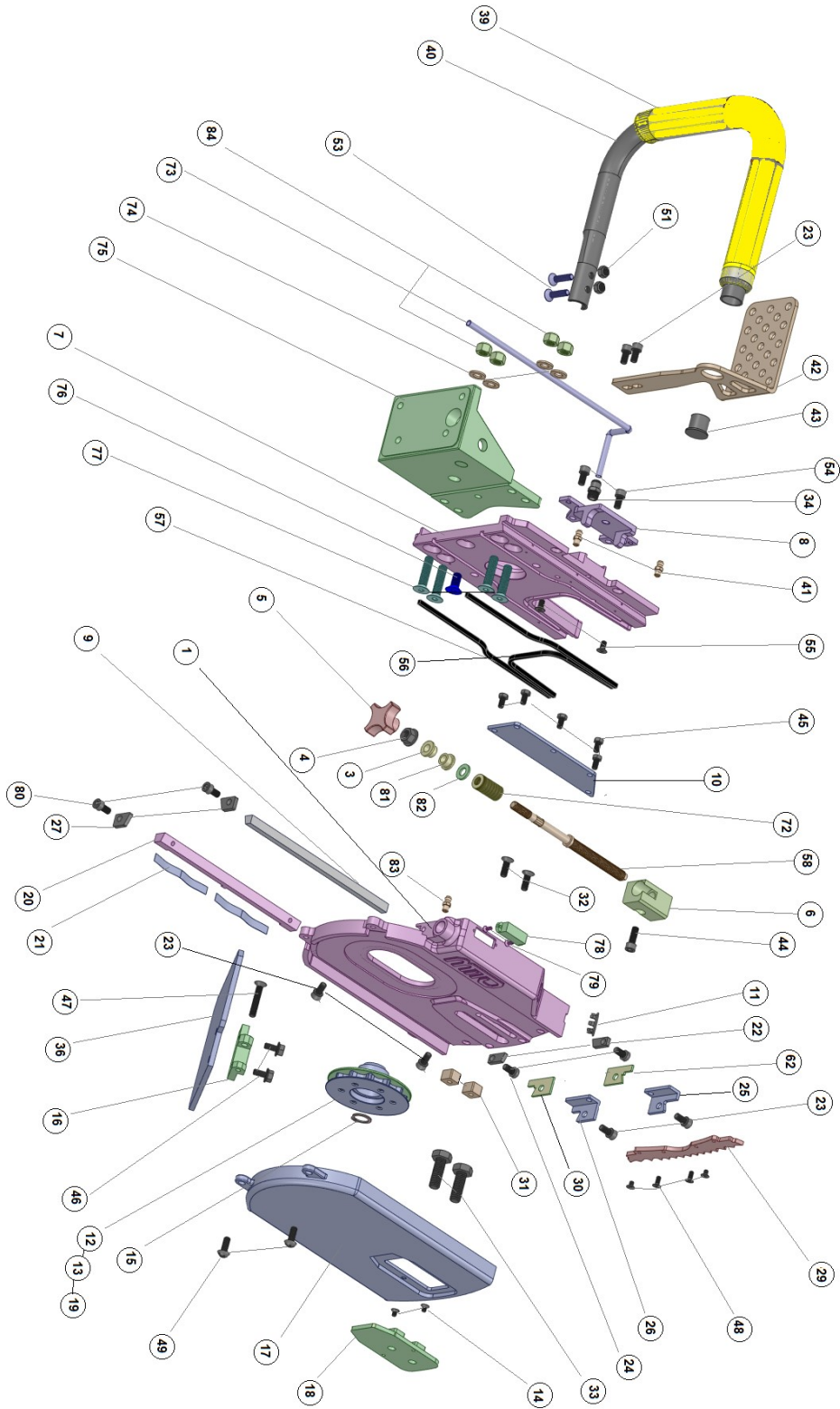
MITO QTH 12 Hydraulics Model A3M004 Spare Part View (1)



MITO QTH 12 Hydraulics Model A3M004 Assembly –Spare parts list (1)

ITEM n°	part n°	Description	QTY.
R1	5050419	Handle	1
R2	5604685	Adapter 45 D 3/4" 4	2
R3	6050901	SPOOL 3	1
R4	6011943	SPOOL COVER 3	1
R5	5811928	SCREW FH 8-32 X 1/2 PHIL 3	1
R6	7484628	INNER QUADRING 6	4
R7	7404608	OUTERQUADRING 4	2
R8	5850902	OUTER SPOOL SPRING 3	1
R9	5819945	PLUG	2
R10	6004627	SPOOL RETAINER 3	1
R11	5804653	SCREW SHCS 8-32 x 1/2" 3	1
R12	5029162	TRIGGER LOCK 3	1
R13	6014935	TRIGGER / SPOOL LINK 3	1
R14	6014935	ROLL PIN 5/32 x 5/8" 3	2
R15	5819950	TRIGGER LOCK SPRING 3	1
R16	5029161	TRIGGER 3	1
R17	5839951	TRIGGER & LOCK SCREW SET (2 PCS) 4	2
R19	5804654	INNER SPOOL SPRING 3	1
R21	5650908	BRONZE PLUG	2
R22	5616803	ALLUMINUM PLUG	2
R23	1939516	MOTOR 12 GPM	1
R24	6001885	COUPLING MALE	1
R25	1697502	HYDR HOSE WIP1/2"	2
R26	6001886	COUPLING FEMALE	1
R27	5804684	ADAPTER 90 D 3/4"	1
R28	6050905	HYDR TUBE PRESSURE & RETURN	2
R29	5806317	SHCS 1/4-20 x 3/4"	4
R30	5806101	SHCS 3/8 16 x 1"	2
R31	5650911	WATER HOSE ADAPTER 1/4 slip on tube X 1/4 NPTM	1
R32	7404780	MOTOR SHAFT FELT GASKET 1/2 x 1-1/4" x 1/4"	1

MITO QTH 12 Hydraulics Model A3M004 Spare part View (2)



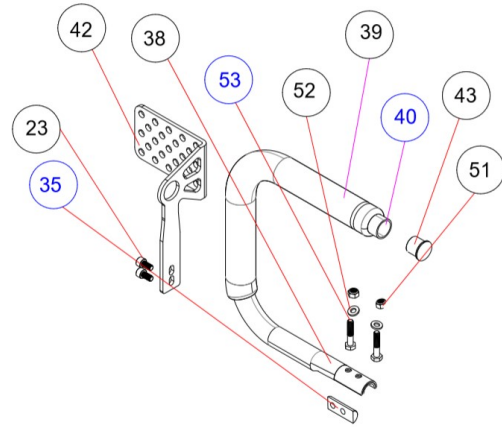
MITO QTH 12 Hydraulics Model A3M004 Spare Parts list (2)

MITO QTH (RGC) CODE A3M004 sort by Item

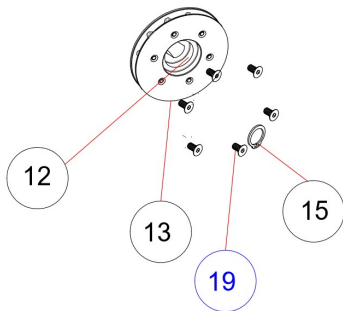
ITEM NO.	Part n°	DESCRIPTION	QTY.
1	A3M001003	Main body - Bar Holder	1
2	A3M001075	RGC motor preassembled part see pag 4	1
3	A3M004020	Main screw Brass bushing 12mm	1
4	A3M004021	M8 Flanged nut	1
5	A3M004022	M8 Threaded Knob	1
6	A3M004005	QT Barrel, bronze	1
7	A3M001001	Motor Plate	1
8	A3M004001	Nut Bracket (New Pennon)	1
9	A3M001002	Upper bronze slide	1
10	A3M001005	Main Screw Box Cover	1
11	A3M004023	Metal Round Plug for pannel	1
12	A3M004013	Sprocket Body 1543 QTHU Z12	1
13	A3M004014	Dia 82 mm Sprocket Flange	1
14	A3M004039	M4X6 FHCS	2
15	A3M004025	Seeger 0,588" grove D.09"	1
16	A3M001044	Bracket Mood Flap	1
17	A3M001004	Main side Cover	1
18	A3M001033	Bar Clamp Flange (cover)	1
20	A3M001021	Lower bronze Rail	1
21	A3M004027	Wave Spring	2
22	A3M004003	Front Bronze bar stopper	2
23	A3M001070	M6x10 SHCS	2
24	A3M004029	M6x12 SHCS	2
25	A3M004002	Upper Front Seal Locker	1
26	A3M004006	Lower Front Seal Locker	1
27	A3M004004	Back Bronze slide stopper	2
29	A3M004008	Tiger Grip	1
30	A3M004009	Front Lower back scraper	1
31	A3M001032	Bar Holder BLOCK	2
32	A3M004030	M6x22 FHSCS	2
33	A3M004031	M10x30 HHCS	2
34	A3M004032	Water Connection Plug	1
36	A3M001045	Mud Flap	1
39	A3M004010	Yellow pipe corrugated cover	1
40	A3M001046	Handle	1
41	A3M001037	Grease nipple M6x1	2
42	A3M001041	Handle Link Guitar + protection	1
43	A3M004007	Rubber Cup Handle OD 22, ID 19	1
44	A3M001071	M6x15 SHCS 8,8	1
45	A3M004036	M5x10 HHCS 8,8	5
46	A3M004037	M6x12 SHCS 8,8	2
47	A3M004038	M6x35 FHSCS 8,8	1
48	A3M004039	M4X6 FHSCS	4
49	A3M004040	M6x16 SHCS	2
51	A3M004041	M6 locknut	2
53	A3M004050	M6x30 FHSCS	2
54	A3M004043	M5X10 FHSCS	2
55	A3M004044	M6x10 FHSCS	2
56	A3M004045	OR Cord C shaped front	1
57	A3M004046	OR Cord shaped T.B.	2
58	A3M005010	Main sciew	1
62	A3M004011	Front Upper back scraper	1
72	A3M005081	Cup Spring 8,2x15	32
73	A3M004080	Water cooling Pipe OD 6m	1
74	A3M005082	M8 Stell Washer	4
75	A3M005002	Base support motor plate	1
76	A3M005083	M8X18 FHSCS	1
77	A3M005084	M8x35 FHSCS	4
78	A3M005085	Bull Eyes	1
79	A3M005086	M3x8 FHSCS	2
80	A3M001070	M6x10 SHCS	2
81	A3M005088	Main screw Brass bushing 18mm	1
82	A3M005089	M8 Steel Washer	1
83	A3M005090	M6 ball screw +M6 nut	1
84	A3M005087	M8 locknut	4
85	A3M001070	M6x10 SHCS	2
86	A3M001070	M6x10 SHCS	2

MITO QTH 12 Hydraulics A3M004 Spare Part Preassembled

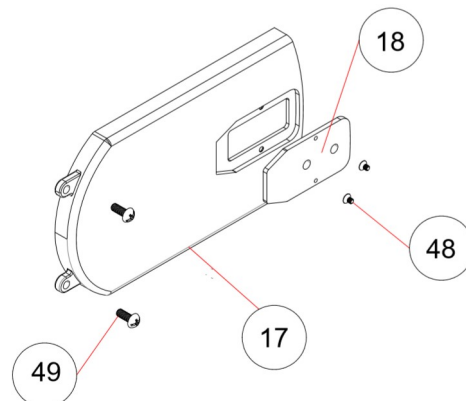
A3S004001 - Handle



A3S004002 - Sprocket Z12

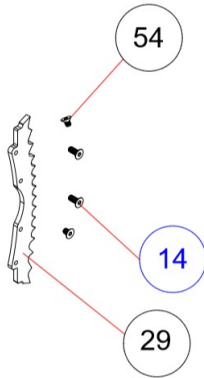


A3S004003 - Main Side Cover

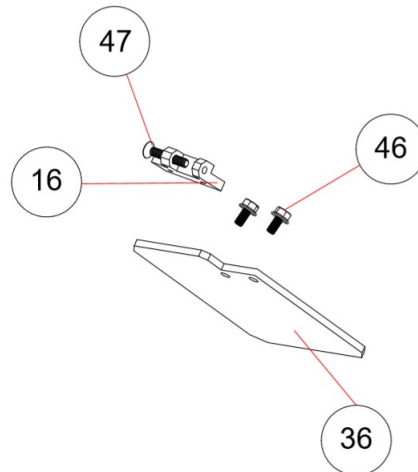


MITO Hydraulics Model A3M004 Spare Part Preassembled

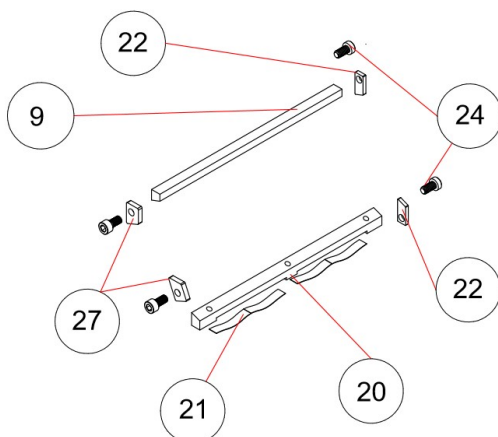
A3S004004 - Tiger Grip



A3S004005 - Mud Flap

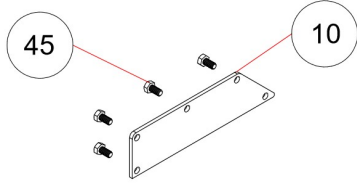


A3S004006 - Bronze rail

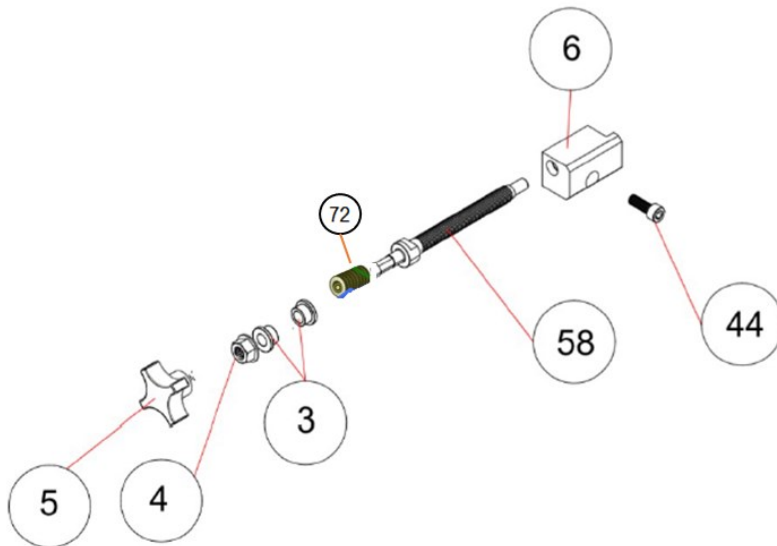


MITO Hydraulics Model A3M004 Spare Part Preassembled

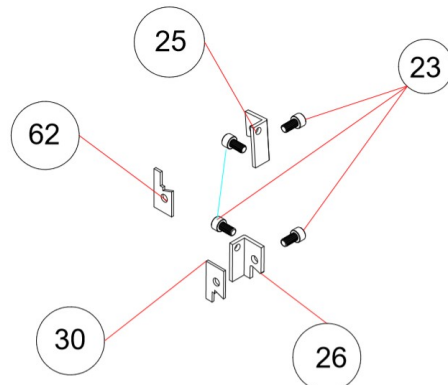
A3S004007 - Main Screw Bar Cover



A3S004008 - Main Screw



A3S004009 - Front Scraper



MITO Hydraulics Model A3M004 Spare Part Preassembled

A3S004001 -HANDLE			
Item n°	Part n°	DESCRIPTION	QTY.
23	A3M001070	M6x10 SHCS	7
39	A3M004010	Yellow pipe corrugated cover	1
40	A3M001046	Handle	1
42	A3M001041	Handle Link Guitar + protection	1
43	A3M004007	Rubber Cup Handle OD 22, ID 19	1
51	A3M004041	M6 locknut	2
52	A3M004042	M6 X 12 STEEL washer	2
53	A3M004039	M6x30 HHCS	2
A3S004003 - MAIN SIDE COVER			
Item n°	Part n°	DESCRIPTION	QTY.
17	A3M001004	Main side Cover	1
18	A3M001033	Bar Clamp Flange (cover)	1
48	A3M004039	M4X6 FHCS	2
49	A3M004040	M6x16 SHCS	2
A3S004004 - TIGER GRIP			
Item n°	Part n°	DESCRIPTION	QTY.
29	A3M004008	Tiger Grip	1
54	A3M004043	M4X6 FHCS	2
A3S004005 - MUD FLAP			
Item n°	Part n°	DESCRIPTION	QTY.
16	A3M001044	Bracket Mud Flap	1
36	A3M001045	Mud Flap	1
46	A3M004037	M6x12 FHHCS	2
47	A3M004038	M6x35 FHCS	1
A3S004006 - BRONZE RAIL			
Item n°	Part n°	DESCRIPTION	QTY.
9	A3M001002	Upper bronze slide	1
20	A3M001021	Lower bronze Rail	1
21	A3M004027	Wave Spring	2
22	A3M004003	Front Bronze bar stopper	2
24	A3M004029	M6x12 LSHCS	4
27	A3M004004	Back Bronze slide stopper	2
A3S004007 - MAIN SCREW BAR COVER			
Item n°	Part n°	DESCRIPTION	QTY.
10	A3M001005	Main Screw Box Cover	1
45	A3M004036	M5x10 HHCS	5
A3S004008 - MAIN SCREW			
Item n°	Part n°	DESCRIPTION	QTY.
3	A3M004020	Main screw Brass bushing	2
4	A3M004021	M8 Flanged nut	1
5	A3M004022	M8 Threaded Knob	1
6	A3M004005	QT Barrel, bronze	1
44	A3M001071	M6x15 SHCS	1
58	A3M005010	Main scrow	1
72	A3M005081	Cup Spring 8,2x15	32
A3S004009 - FRONT SCRAPER			
Item n°	Part n°	DESCRIPTION	QTY.
23	A3M001070	M6x10 SHCS	4
25	A3M004002	Upper Front Seal Locker	1
26	A3M004006	Lower Front Seal Locker	1
30	A3M004009	Front Lower back scraper	1
62	A3M004011	Front Upper back scraper	1