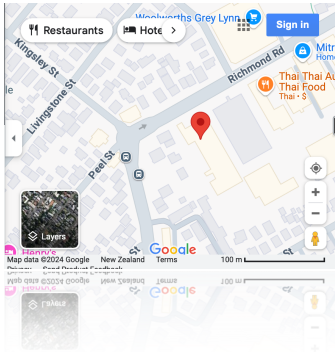


## Location

If cell tower location data is included the record an icon is highlighted and the mapped location visible in an expansion window.



## Mapping

Multiple locations are able to be selected and mapped with their associated data on one large map.



## Reporting

Records of interest can be tagged, commented on and then exported as a PDF report.



## Artificial Intelligence

AI is incorporated directly into NetPulse permitting queries against selected records and storing the results in the application

ai

## Quick and Easy...

### Software is **Free...**

Delve Forensic Ltd uses expert staff to carry out data arrangement and verification. This time is invoiced, and a nominal per seat licence paid during case time.

### Training and Familiarisation

Familiarisation with system provided, together with support and training if required.

### Multiple Access

Viewing by multiple staff concurrently is enabled

### No Software Installation

You can choose to access data on our secure web platform via an internet browser of your choice.

### You find the data to support your case

As defence counsel you are able to select the findings which provide the basis for persuasive arguments, and cross examination of prosecution witnesses.

### **Expert** on Hand

Easy sharing of your findings with our expert staff who can provide foundations to your position, expert opinion and evidence in court.

## EMPOWER YOUR TEAM AND LEVEL THE PLAYING FIELD WITH **NETPULSE**

[tony@delveforensic.com](mailto:tony@delveforensic.com)

<https://delveforensic.com/netpulse>

# NETPULSE

BY DELVE FORENSIC LTD



POWERFUL CALL RECORD  
ANALYSIS...SIMPLIFIED DEFENCE

Does your case have thousands of call records over multiple sources?

Are you having to match people to numbers?

Are you trying to understand the nature of relationships?

Are numbers being swapped and you're losing track?

Are you unable to access location information?

Is time against you?

Are you dealing with it on your own?

**THE SOLUTION IS HERE...**



## A new opportunity in defence...

Managing countless spreadsheets across multiple individuals can overwhelm small defence teams. **NetPulse** levels the playing field against large law enforcement agencies. Exclusively for defence teams, **NetPulse** consolidates your call data into a powerful, feature-rich database—delivering unmatched insights to help you build a winning case.

## Forensic Foundations

NetPulse audits incoming data detecting flaws, duplications and contradictions.

### Data Audit

Large disclosures often contain errors and duplications. NetPulse identifies these and assists in rigorous examination of the data and witnesses.

### Single Point of Truth

Call data from multiple sources is consolidated into a single database, ensuring complete confidence in your analysis. Every entry is forensically hashed to guarantee its integrity throughout the examination. Key data is highlighted, with supporting information readily viewable.

### Intersecting Data

Investigations produce additional location and activity data that can be cross-referenced with call records. This information may come from bank statements, device analysis, surveillance logs and more. NetPulse can incorporate this data and link it to call records for comprehensive analysis.

### Data Bias

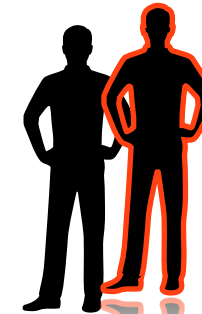
Data sets disclosed reflect the parameters of interest to law enforcement. **NetPulse** aids in identifying records omitted and the inherent bias this introduces into evidence.

## Essential Features

**NetPulse** is designed by Tony Drake a former New Zealand Police Digital Forensic Analyst. His experience over 20 years as an investigator, digital forensic practitioner, database designer and expert witness has been leveraged to the advantage of those responsible for providing a vigorous defence.

### Comprehensive Find

Simplified find to quickly identify essential data, and advanced find to support more experienced users.

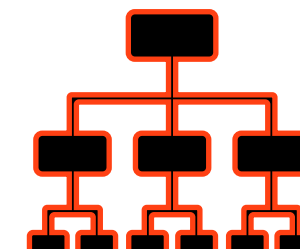


### Identities

Simple attribution of identities to phone numbers applied across all call records. Alias's reconciled to identities and device exchange tracked across time.

### Conversations

Narrow data to individual interactions to define relationships and key information.



### Cross Reference

Presence of intersecting data from other sources is indicated within records and can be viewed simply within an expansion window.