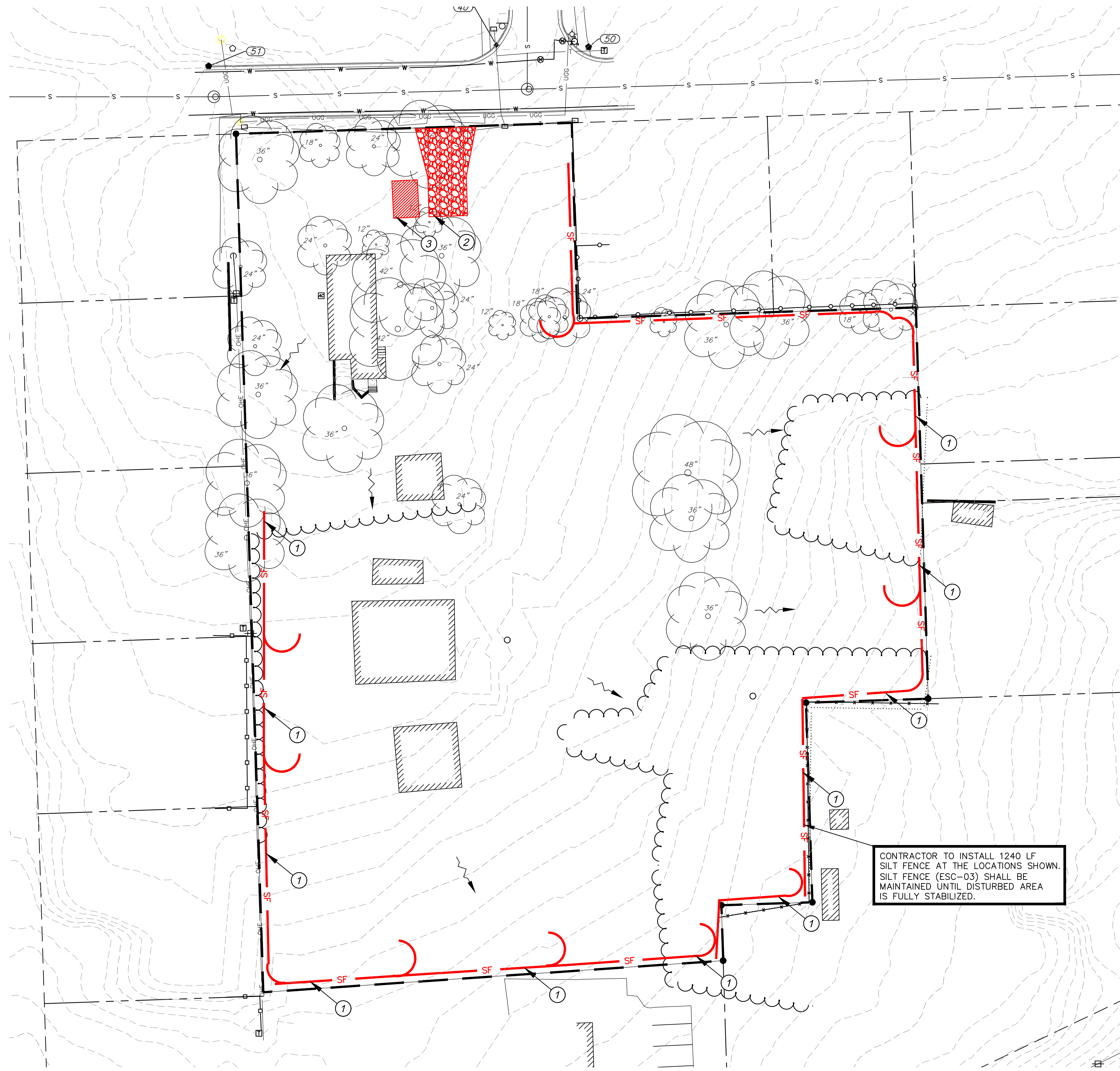
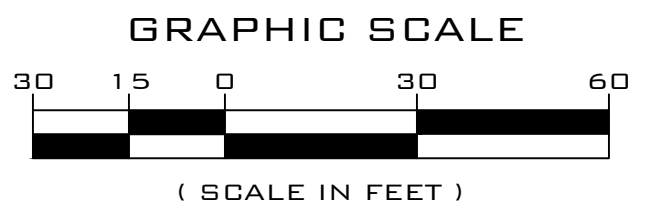
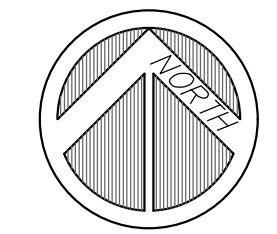


EROSION AND SEDIMENT CONTROL GENERAL NOTES

1. PRIOR TO LAND DISTURBANCE ACTIVITIES:
 - 1.1. THE CONTRACTOR SHALL DELINEATE THE OUTER LIMITS OF ANY NATURAL STREAM CORRIDOR DESIGNATED WITH CONSTRUCTION FENCING.
 - 1.2. CONSTRUCT A STABILIZED ENTRANCE/PARKING/DELIVERY AREA.
 - 1.3. INSTALL PERIMETER CONTROLS AND REQUEST THE INSPECTION OF THE PRE-CONSTRUCTION EROSION AND SEDIMENT CONTROL MEASURES DESIGNATED ON THE APPROVED EROSION AND SEDIMENT CONTROL PLAN. LAND DISTURBANCE WORK SHALL NOT PROCEED UNTIL THERE IS A SATISFACTORY INSPECTION.
2. THE CONTRACTOR SHALL COMPLY WITH ALL REQUIREMENTS OF THE KANSAS WATER POLLUTION CONTROL AND NPDES STORMWATER RUNOFF FROM CONSTRUCTION SITES GENERAL PERMIT, KC-APWA SPECIFICATIONS 2150 INCLUDING BUT NOT LIMITED TO:
 - 2.1. THE CONTRACTOR SHALL STABILIZE DISTURBED AREAS WITH MULCH OR SIMILAR WITH SEEDING, AND COMPLETE STABILIZING WITHIN 14 DAYS.
 - 2.2. THE CONTRACTOR SHALL PERFORM INSPECTIONS OF EROSION AND SEDIMENT CONTROL MEASURES AT THE FOLLOWING MINIMUM INTERVALS:
 - 2.2.1. DURING ACTIVE CONSTRUCTION PHASES - AT LEAST ONCE A WEEK.
 - 2.2.2. DURING PERIODS OF INACTIVITY - AT LEAST ONCE PER TWO WEEKS.
 - 2.2.3. AFTER EACH RAINFALL EVENT OF 1/2 INCH OR MORE WITHIN 24 HOURS OF THE RAIN EVENT.
 - 2.3. THE CONTRACTOR SHALL MAINTAIN AN INSPECTION LOG INCLUDING THE INSPECTOR'S NAME, DATE OF INSPECTION, OBSERVATIONS AS TO THE EFFECTIVENESS OF THE EROSION AND SEDIMENT CONTROL MEASURES, ACTIONS NECESSARY TO CORRECT DEFICIENCIES, WHEN THE DEFICIENCIES WERE CORRECTED, AND THE SIGNATURE OF THE PERSON PERFORMING THE INSPECTION. THE INSPECTION LOG SHALL BE AVAILABLE FOR REVIEW BY THE REGULATORY AUTHORITY.
 - 2.4. THE CONTRACTOR SHALL HAVE THE EROSION AND SEDIMENT CONTROL PLAN ROUTINELY UPDATED TO SHOW ALL CHANGES AND AMENDMENTS TO THE PLAN. A COPY OF THE EROSION AND SEDIMENT CONTROL PLAN SHALL BE KEPT ON SITE AND MADE AVAILABLE FOR REVIEW BY THE REGULATORY AUTHORITY.
3. UNLESS OTHERWISE NOTED IN THE PLANS, ALL SEEDING MUST CONFORM TO DIVISION II-CONSTRUCTION MATERIALS SPECIFICATION-SECTION 2150 PUBLISHED BY THE KANSAS CITY METROPOLITAN CHAPTER OF THE AMERICAN PUBLIC WORKS ASSOCIATION DATED FEBRUARY 15, 2017. PERMANENT SEEDING SHALL BE INSTALLED AFTER COMPLETION OF FINAL GRADING EXCEPT WHEN SEEDING WILL OCCUR OUTSIDE THE ACCEPTABLE SEEDING SEASON AS SPECIFIED IN SECTION 2150. WHEN TEMPORARY SEEDING IS INSTALLED, PERMANENT SEEDING SHALL BE INSTALLED AT THE NEXT SEEDING SEASON. TEMPORARY SEEDING SHALL NOT BE USED AS STABILIZATION MEASURE FOR A PERIOD EXCEEDING 12 MONTHS. THEIR PERMIT WILL NOT BE CLOSED UNTIL PERMANENT SEEDING HAS BEEN ESTABLISHED TO A MINIMUM OF 80% DENSITY OVER THE ENTIRE DISTURBED AREA.
4. THE CONTRACTOR SHALL MAINTAIN INSTALLED EROSION CONTROL AND SEDIMENT CONTROL DEVICES IN A MANNER THAT PRESERVES THEIR EFFECTIVENESS FOR PREVENTING SEDIMENT FROM LEAVING THE SITE OR ENTERING A SENSITIVE AREA SUCH AS A NATURAL STREAM CORRIDOR, AREAS OF THE SITE INTENDED TO BE LEFT UNDISTURBED, A STORM SEWER, OR AN ON-SITE DRAINAGE CHANNEL.
5. THE CONTRACTOR IS RESPONSIBLE FOR PROVIDING EROSION AND SEDIMENT CONTROL FOR THE DURATION OF THE PROJECT. IF THE ENGINEER DETERMINES THE EROSION CONTROL DEVICES DO NOT PROVIDE ADEQUATE EROSION AND SEDIMENT CONTROL AT ANY TIME DURING THE PROJECT, THE CONTRACTOR SHALL INSTALL ADDITIONAL OR ALTERNATE MEASURES THAT PROVIDE EFFECTIVE CONTROL.
6. CONCRETE WASH OUT OR RINSE WATER FROM CONCRETE MIXING EQUIPMENT, TOOLS AND/OR READY MIX TRUCKS MAY NOT BE DISCHARGED INTO OR BE ALLOWED TO RUN DIRECTLY INTO ANY EXISTING BODY OF WATER OR STORM INLET. ONE OR MORE LOCATIONS FOR CONCRETE WASH OUT WILL BE DESIGNATED ON SITE, SUCH THAT DISCHARGES DURING CONCRETE WASH OUT WILL BE CONTAINED IN A SMALL AREA WHERE WASTE CONCRETE CAN SOLIDIFY IN PLACE.
7. CHEMICALS OR MATERIALS CAPABLE OF CAUSING POLLUTION MAY ONLY BE STORED ONSITE IN THEIR ORIGINAL CONTAINER. MATERIALS STORED OUTSIDE MUST BE IN CLOSED AND SEALED WATER-PROOF CONTAINERS AND LOCATED OUTSIDE OF DRAINAGE WAYS OR AREAS SUBJECT TO FLOODING. LOCKS AND OTHER MEANS TO PREVENT OR REDUCE VANDALISM SHALL BE USED. SPILLS WILL BE REPORTED AS REQUIRED BY LAW AND IMMEDIATE ACTIONS TAKEN TO CONTAIN THEM.
8. SILT FENCES AND EROSION CONTROL DEVICES WHICH ARE SHOWN ALONG THE BACK OF CURB MUST BE INSTALLED WITHIN TWO WEEKS OF CURB BACKFILL AND PRIOR TO PLACEMENT OF BASE ASPHALT. EXACT LOCATION OF THESE EROSION CONTROL METHODS MAY BE FIELD ADJUSTED TO MINIMIZE CONFLICTS WITH UTILITY CONSTRUCTION, HOWEVER, ANTICIPATED DISTURBANCE BY UTILITY CONSTRUCTION SHALL NOT DELAY INSTALLATION.
9. CONTRACTOR TO INSTALL INTERIOR SILT FENCE AS NECESSARY DURING CONSTRUCTION. PORTIONS MAY BE LIMITED AS VEGETATION IS ESTABLISHED AND HARDSCAPE IS INSTALLED. ENTIRE LENGTH MAY BE INSTALLED AT THE CONTRACTOR'S OPTION TO AID IN STABILIZING SLOPES.



Know what's below.
Call before you dig.



Milburn Civil Engineering, LLC
 MILBURN CIVIL ENGINEERING, LLC
 33135 W 83RD ST
 DE SOTO, KS 66018
 913-583-0367

LEGEND

- SEDIMENT FENCE (KC APWA DETAIL ESC-03)
- DIRECTIONAL FLOW AREA
- CONCRETE WASHOUT (ESC-01)
- ROCK DITCH CHECK (ESC-10)
- CONSTRUCTION ENTRANCE (ESC-01)
- DISTURBED AREA (2.81 ACRES)

EROSION/SEDIMENT CONTROL STAGING CHART

PROJECT STAGE	PLAN NUMBER	DESCRIPTION	REMOVE AFTER STAGE	NOTES
A - PRIOR TO LAND DISTURBANCE	①	INSTALL PHASE 1 SILT FENCE	D	PLACE AS SHOWN ON PLAN
	②	CONSTRUCTION ENTRANCE	D	PLACE AS SHOWN ON PLAN
	③	CONCRETE WASH-OUT	D	PLACE AS SHOWN ON PLAN
B - AFTER STRIPPING, GRUBBING & MASS GRADING	④	MAINTAIN STAGE A SILT FENCE, CONCRETE WASH-OUT. INSTALL ROCK DITCH CHECKS.	C	PLACE AS SHOWN ON PLAN
C - AFTER STORM SEWER CONSTRUCTION	⑤	INSTALL ROCK DITCH CHECK	D	PLACE AS SHOWN ON PLAN
	⑥	INSTALL INLET PROTECTION	D	PLACE AS SHOWN ON PLAN
D - FINAL GRADING, PAVING & LANDSCAPING	⑦	FINAL SEEDING, SOD, AND LANDSCAPING	N/A	SILT FENCING AND INLET PROTECTION MAY BE REMOVED ONCE SEED & SODDED ARE ESTABLISHED ON 80% SITE

DATE: 03/21/2024
 DESIGNED BY: TAS
 CHECKED BY: JM

REVISIONS	REVISIONS

EROSION CONTROL PHASE 1

C101

Mar 21, 2024 - 4:05pm - USER: galtzmann
 F:\Chil_3D\Projects\Done_anderson\Anderson Estates 1804-251\CAD\Sheets\ Erosion Control.dwg

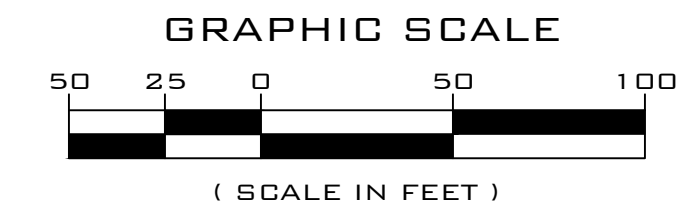
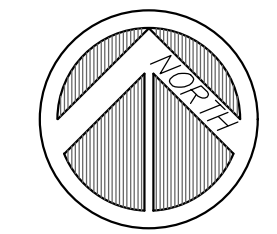
ANDERSON ESTATES
 EROSION CONTROL PLANS
 33475 W 85TH ST
 DE SOTO, KS 66018

EROSION AND SEDIMENT CONTROL GENERAL NOTES

1. PRIOR TO LAND DISTURBANCE ACTIVITIES:
 - 1.1. THE CONTRACTOR SHALL DELINEATE THE OUTER LIMITS OF ANY NATURAL STREAM CORRIDOR DESIGNATED WITH CONSTRUCTION FENCING.
 - 1.2. CONSTRUCT A STABILIZED ENTRANCE/PARKING/DELIVERY AREA.
 - 1.3. INSTALL PERIMETER CONTROLS AND REQUEST THE INSPECTION OF THE PRE-CONSTRUCTION EROSION AND SEDIMENT CONTROL MEASURES DESIGNATED ON THE APPROVED EROSION AND SEDIMENT CONTROL PLAN. LAND DISTURBANCE WORK SHALL NOT PROCEED UNTIL THERE IS A SATISFACTORY INSPECTION.
2. THE CONTRACTOR SHALL COMPLY WITH ALL REQUIREMENTS OF THE KANSAS WATER POLLUTION CONTROL AND NPDES STORMWATER RUNOFF FROM CONSTRUCTION SITES GENERAL PERMIT, KC-APWA SPECIFICATIONS 2150 INCLUDING BUT NOT LIMITED TO:
 - 2.1. THE CONTRACTOR SHALL STABILIZE DISTURBED AREAS WITH MULCH OR SIMILAR WITH SEEDING, AND COMPLETE STABILIZING WITHIN 14 DAYS.
 - 2.2. THE CONTRACTOR SHALL PERFORM INSPECTIONS OF EROSION AND SEDIMENT CONTROL MEASURES AT THE FOLLOWING MINIMUM INTERVALS:
 - 2.2.1. DURING ACTIVE CONSTRUCTION PHASES – AT LEAST ONCE A WEEK.
 - 2.2.2. DURING PERIODS OF INACTIVITY – AT LEAST ONCE PER TWO WEEKS.
 - 2.2.3. AFTER EACH RAINFALL EVENT OF 1/2 INCH OR MORE WITHIN 24 HOURS OF THE RAIN EVENT.
 - 2.3. THE CONTRACTOR SHALL MAINTAIN AN INSPECTION LOG INCLUDING THE INSPECTOR'S NAME, DATE OF INSPECTION, OBSERVATIONS AS TO THE EFFECTIVENESS OF THE EROSION AND SEDIMENT CONTROL MEASURES, ACTIONS NECESSARY TO CORRECT DEFICIENCIES, WHEN THE DEFICIENCIES WERE CORRECTED, AND THE SIGNATURE OF THE PERSON PERFORMING THE INSPECTION. THE INSPECTION LOG SHALL BE AVAILABLE FOR REVIEW BY THE REGULATORY AUTHORITY.
 - 2.4. THE CONTRACTOR SHALL HAVE THE EROSION AND SEDIMENT CONTROL PLAN ROUTINELY UPDATED TO SHOW ALL CHANGES AND AMENDMENTS TO THE PLAN. A COPY OF THE EROSION AND SEDIMENT CONTROL PLAN SHALL BE KEPT ON SITE AND MADE AVAILABLE FOR REVIEW BY THE REGULATORY AUTHORITY.
3. UNLESS OTHERWISE NOTED IN THE PLANS, ALL SEEDING MUST CONFORM TO DIVISION II-CONSTRUCTION MATERIALS SPECIFICATION-SECTION 2150 PUBLISHED BY THE KANSAS CITY METROPOLITAN CHAPTER OF THE AMERICAN PUBLIC WORKS ASSOCIATION DATED FEBRUARY 15, 2017. PERMANENT SEEDING SHALL BE INSTALLED AFTER COMPLETION OF FINAL GRADING EXCEPT WHEN SEEDING WILL OCCUR OUTSIDE THE ACCEPTABLE SEEDING SEASON AS SPECIFIED IN SECTION 2150. WHEN TEMPORARY SEEDING IS INSTALLED, PERMANENT SEEDING SHALL BE INSTALLED AT THE NEXT SEEDING SEASON. TEMPORARY SEEDING SHALL NOT BE USED AS STABILIZATION MEASURE FOR A PERIOD EXCEEDING 12 MONTHS. THEIR PERMIT WILL NOT BE CLOSED UNTIL PERMANENT SEEDING HAS BEEN ESTABLISHED TO A MINIMUM OF 80% DENSITY OVER THE ENTIRE DISTURBED AREA.
4. THE CONTRACTOR SHALL MAINTAIN INSTALLED EROSION CONTROL AND SEDIMENT CONTROL DEVICES IN A MANNER THAT PRESERVES THEIR EFFECTIVENESS FOR PREVENTING SEDIMENT FROM LEAVING THE SITE OR ENTERING A SENSITIVE AREA SUCH AS A NATURAL STREAM CORRIDOR, AREAS OF THE SITE INTENDED TO BE LEFT UNDISTURBED, A STORM SEWER, OR AN ON-SITE DRAINAGE CHANNEL.
5. THE CONTRACTOR IS RESPONSIBLE FOR PROVIDING EROSION AND SEDIMENT CONTROL FOR THE DURATION OF THE PROJECT. IF THE ENGINEER DETERMINES THE EROSION CONTROL DEVICES DO NOT PROVIDE ADEQUATE EROSION AND SEDIMENT CONTROL AT ANY TIME DURING THE PROJECT, THE CONTRACTOR SHALL INSTALL ADDITIONAL OR ALTERNATE MEASURES THAT PROVIDE EFFECTIVE CONTROL.
6. CONCRETE WASH OUT OR RINSE WATER FROM CONCRETE MIXING EQUIPMENT, TOOLS AND/OR READY MIX TRUCKS MAY NOT BE DISCHARGED INTO OR BE ALLOWED TO RUN DIRECTLY INTO ANY EXISTING BODY OF WATER OR STORM INLET. ONE OR MORE LOCATIONS FOR CONCRETE WASH OUT WILL BE DESIGNATED ON SITE, SUCH THAT DISCHARGES DURING CONCRETE WASH OUT WILL BE CONTAINED IN A SMALL AREA WHERE WASTE CONCRETE CAN SOLIDIFY IN PLACE.
7. CHEMICALS OR MATERIALS CAPABLE OF CAUSING POLLUTION MAY ONLY BE STORED ONSITE IN THEIR ORIGINAL CONTAINER. MATERIALS STORED OUTSIDE MUST BE IN CLOSED AND SEALED WATER-PROOF CONTAINERS AND LOCATED OUTSIDE OF DRAINAGE WAYS OR AREAS SUBJECT TO FLOODING. LOCKS AND OTHER MEANS TO PREVENT OR REDUCE VANDALISM SHALL BE USED. SPILLS WILL BE REPORTED AS REQUIRED BY LAW AND IMMEDIATE ACTIONS TAKEN TO CONTAIN THEM.
8. SILT FENCES AND EROSION CONTROL DEVICES WHICH ARE SHOWN ALONG THE BACK OF CURB MUST BE INSTALLED WITHIN TWO WEEKS OF CURB BACKFILL AND PRIOR TO PLACEMENT OF BASE ASPHALT. EXACT LOCATION OF THESE EROSION CONTROL METHODS MAY BE FIELD ADJUSTED TO MINIMIZE CONFLICTS WITH UTILITY CONSTRUCTION, HOWEVER, ANTICIPATED DISTURBANCE BY UTILITY CONSTRUCTION SHALL NOT DELAY INSTALLATION.
9. CONTRACTOR TO INSTALL INTERIOR SILT FENCE AS NECESSARY DURING CONSTRUCTION. PORTIONS MAY BE LIMITED AS VEGETATION IS ESTABLISHED AND HARDSCAPE IS INSTALLED. ENTIRE LENGTH MAY BE INSTALLED AT THE CONTRACTOR'S OPTION TO AID IN STABILIZING SLOPES.



Know what's below.
Call before you dig.



SILT FENCING TO REMAIN IN PLACE UNTIL ALL AREAS UPSTREAM ARE STABILIZED.

SILT FENCING TO REMAIN IN PLACE UNTIL ALL AREAS UPSTREAM ARE STABILIZED.

SILT FENCING TO REMAIN IN PLACE UNTIL ALL AREAS UPSTREAM ARE STABILIZED.

LEGEND

- SF SEDIMENT FENCE (KC APWA DETAIL ESC-03)
- DIRECTIONAL FLOW AREA
- CONCRETE WASHOUT (ESC-01)
- SEEDING/SODDING (1.68 ACRES)
- ROCK DITCH CHECK (ESC-10)
- CONSTRUCTION ENTRANCE (ESC-01)
- INLET PROTECTION (ESC-06)
- DISTURBED AREA (2.81 ACRES)
- BIODEGRADABLE WATTLE (ESC-09)

EROSION/SEDIMENT CONTROL STAGING CHART

PROJECT STAGE	PLAN NUMBER	DESCRIPTION	REMOVE AFTER STAGE	NOTES
A - PRIOR TO LAND DISTURBANCE	①	INSTALL PHASE 1 SILT FENCE	D	PLACE AS SHOWN ON PLAN
	②	CONSTRUCTION ENTRANCE	D	PLACE AS SHOWN ON PLAN
	③	CONCRETE WASH-OUT	D	PLACE AS SHOWN ON PLAN
B - AFTER STRIPPING, GRUBBING & MASS GRADING	④	MAINTAIN STAGE A SILT FENCE, CONCRETE WASH-OUT. INSTALL ROCK DITCH CHECKS.	C	PLACE AS SHOWN ON PLAN
C - AFTER STORM SEWER CONSTRUCTION	⑤	INSTALL ROCK DITCH CHECK INSTALL BIODEGRADABLE WATTLE	D	PLACE AS SHOWN ON PLAN
	⑥	INSTALL INLET PROTECTION	D	PLACE AS SHOWN ON PLAN
D - FINAL GRADING, PAVING & LANDSCAPING	⑦	FINAL SEEDING, SOD, AND LANDSCAPING	N/A	SILT FENCING AND INLET PROTECTION MAY BE REMOVED ONCE SEED & SODDED ARE ESTABLISHED ON 80% SITE

Milburn Civil Engineering, LLC
 MILBURN CIVIL ENGINEERING, LLC
 33135 W 83RD ST
 DE SOTO, KS 66018
 913-583-0367

ANDERSON ESTATES
 EROSION CONTROL PLANS
 33475 W 85TH ST
 DE SOTO, KS 66018

DATE: 03/21/2024
 DESIGNED BY: TAS
 CHECKED BY: JM

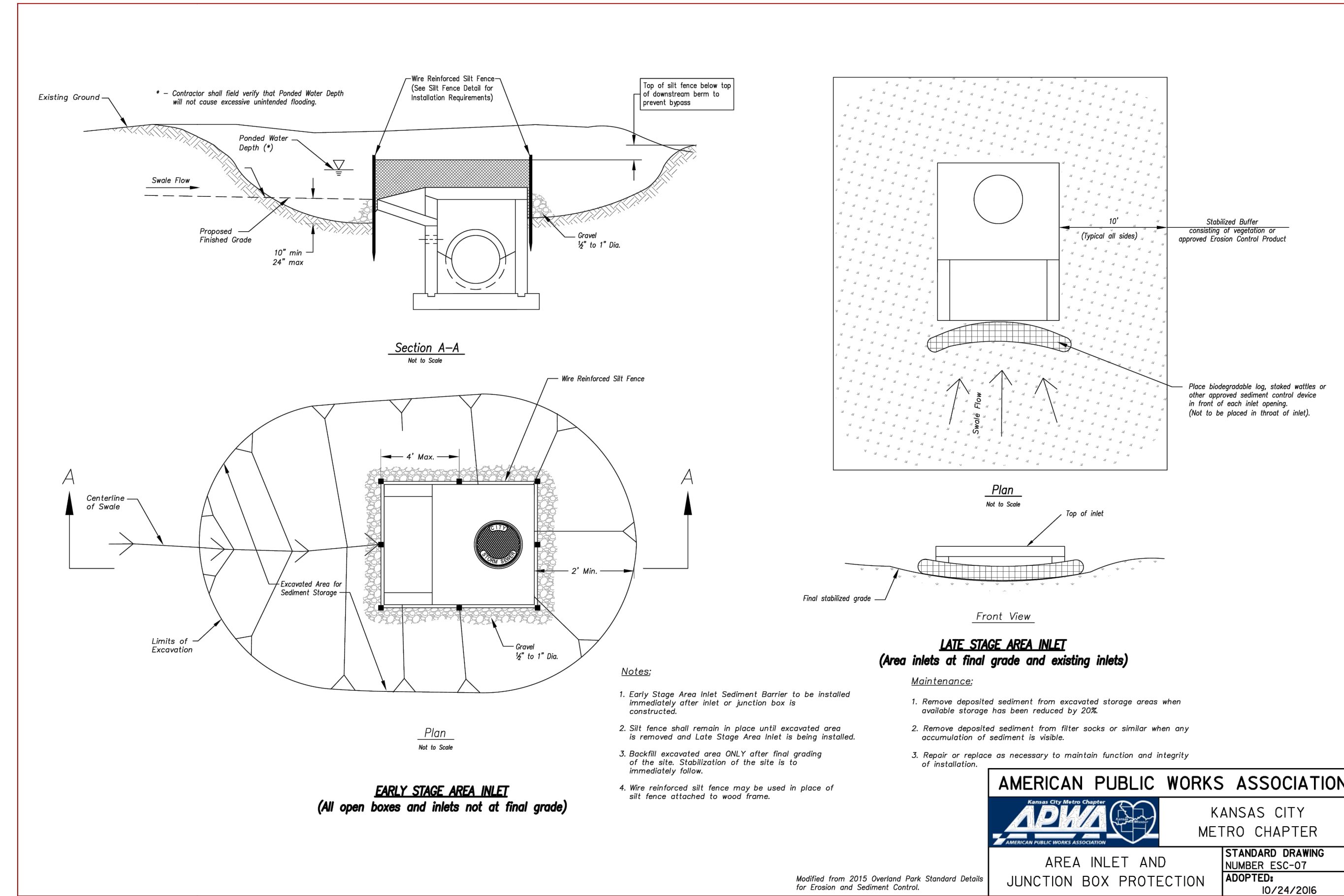
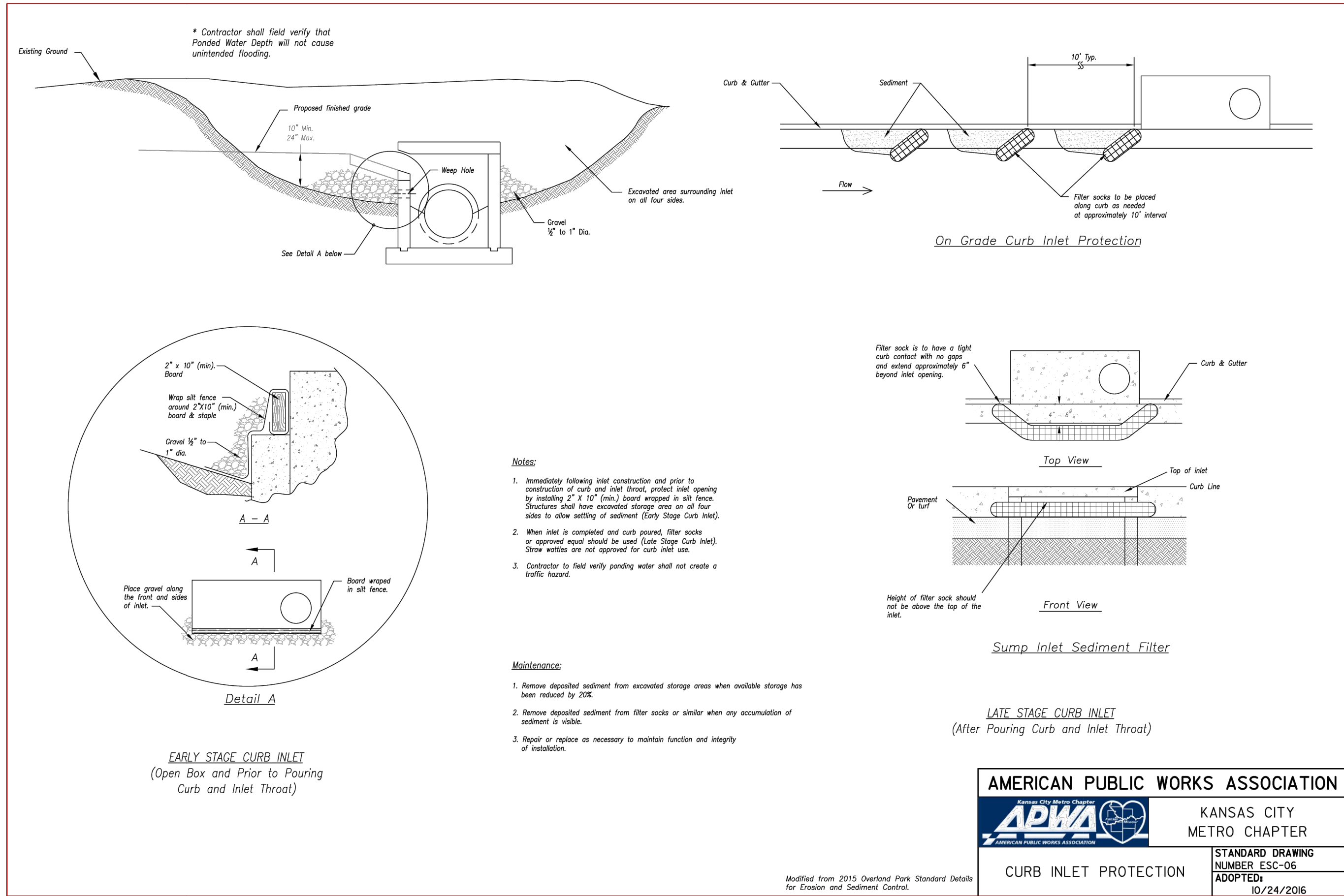
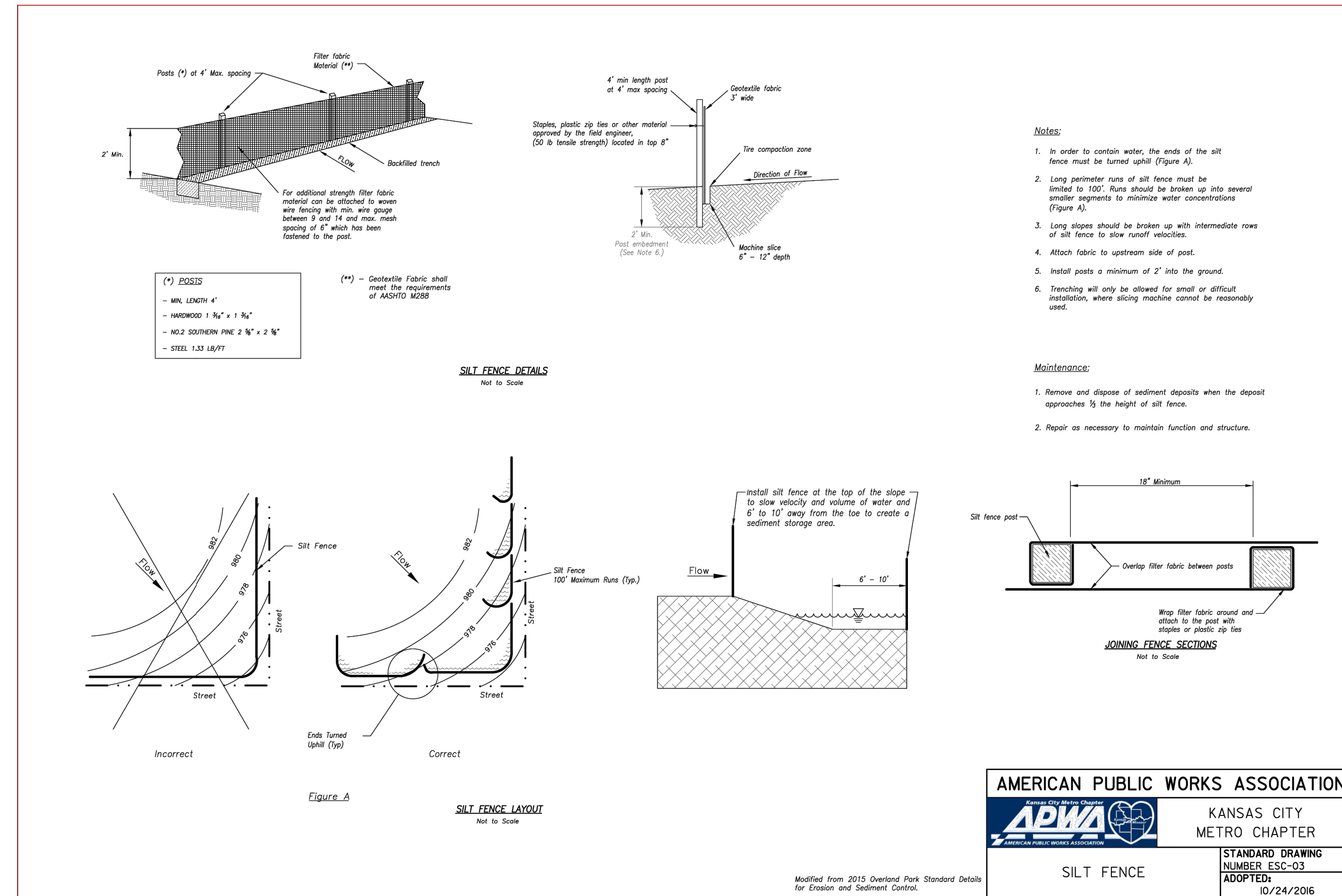
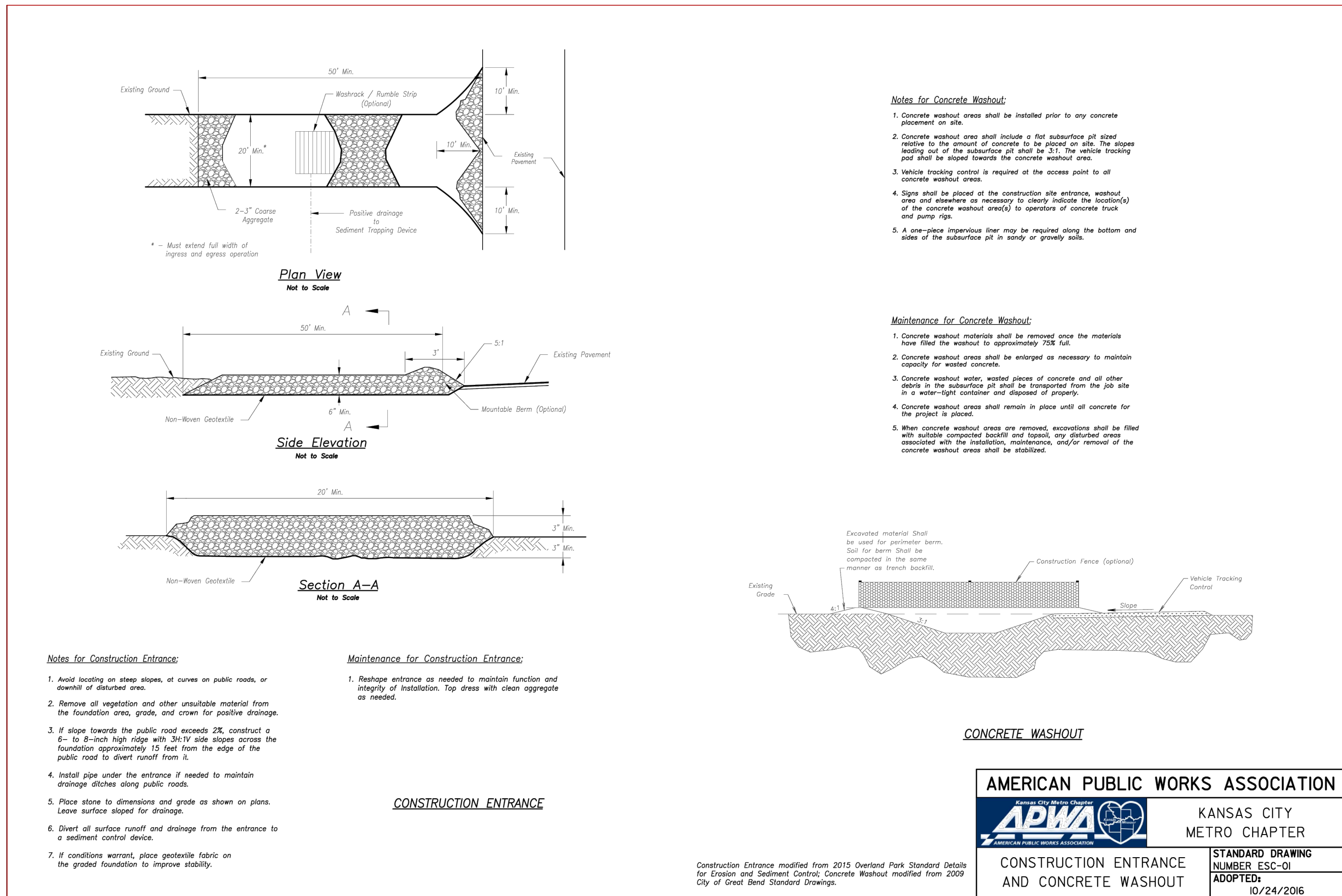
REVISIONS

NO.	DESCRIPTION	DATE

EROSION CONTROL PHASE 2

C102

Mar 21, 2024 - 4:05pm - USER: gaitzmann
 F:\Chil_3D Projects\Done anderson\Anderson Estates 1804-251\CAD\Sheets\ Erosion Control.dwg



Mar 21, 2024 - 4:05pm - USER: gaultmann
 F:\Civil_3D Projects\Done Anderson\Anderson's Estates 1804-251\CAD\Sheets\ Erosion Control.dwg