



# **U.S. COASTAL RESEARCH PROGRAM**

**BUILDING A RESEARCH COMMUNITY TO SUPPORT  
COASTAL STAKEHOLDERS**

Hilary Stockdon (USGS), Leighann Brandt (BOEM), Mary Cialone (USACE),  
Nicole Elko (ASBPA), Julie Rosati (USACE)





# SUPER-STORM SANDY

Emergency planners, first responders, excited media, local politicians, engineers, scientists, federal agencies, conservationists, presidential candidates, Congress, angry homeowners, PhD students, savvy realtors...







## **USCRP IS YOU.**

**A collaboration of Federal agencies, academics, NGOs, and stakeholders working together to coordinate research activities, strengthen academic programs, build a skilled workforce, and address societal needs along the coast.**

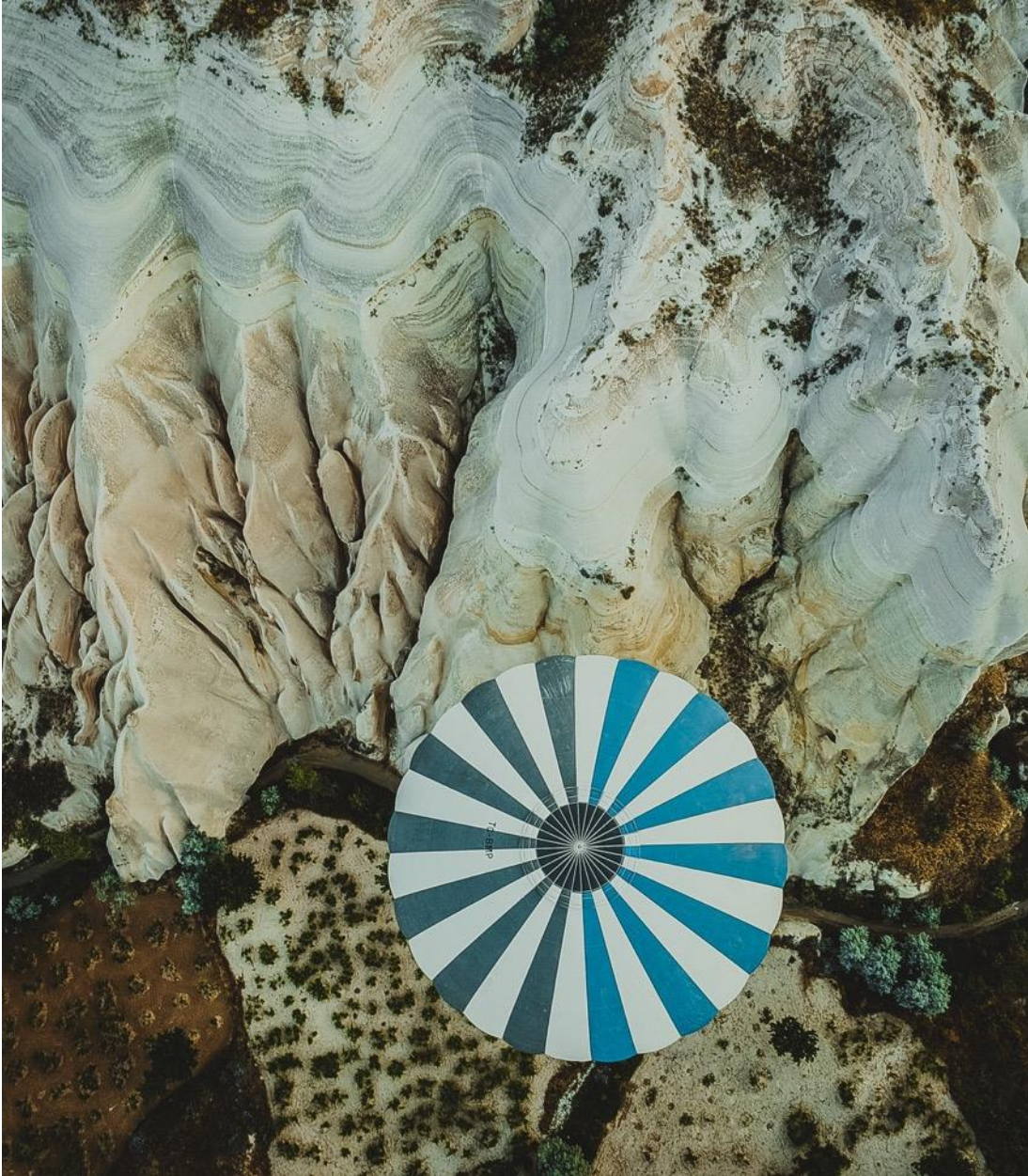


# USCRP GOALS:

1. Build long-term research partnerships and enhance collaboration within the coastal community,
2. Develop and implement a plan that clearly identifies coastal science priorities,
3. Explore fundamental and applied research questions,
4. Enhance funding opportunities for academic programs, and
5. Provide scientific knowledge and useful products to users.







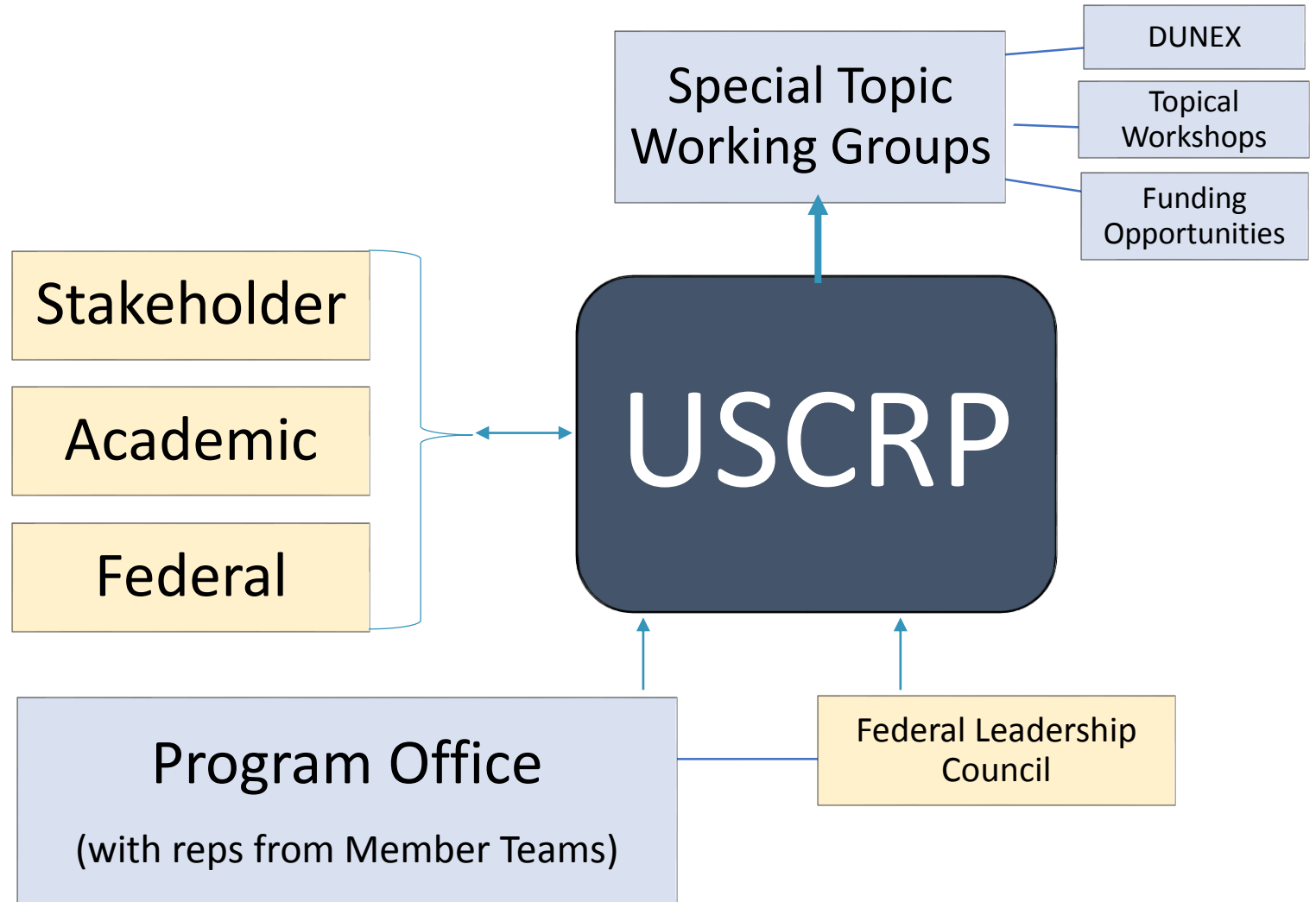
# APPROACH

- People focused. Build relationships. Provide opportunities for meeting, discussion, discovery, collaboration.
- Born out of the 2014 “Nearshore Meeting.”
  - Nearshore community identified key research topics (extreme events, long term morphologic evolution, and human and ecosystem health) as well as needs for infrastructure, data sharing, and improved coordination.
  - The Nearshore Plan (Nearshore Processes Community, 2015) summarized results; called for creation of National coordinated effort to address research needs.



(WORKING TOWARDS)  
**ORGANIZATION**

Creating a structure that supports the community and helps build stronger coastal programs.



Within the US, expertise in nearshore coastal processes research and application is spread across many different groups, each with unique roles and overlapping interests.

## FOSTERING COLLABORATIVE RESEARCH BY:

---



### Helping define unique and complementary Federal roles

- *National Integrated Implementation Plan* (Nearshore Community, 2016) - USACE, USGS, BOEM, NOAA, NPS, ONR, NSF, FEMA, NRC.
- FY19 Coastal Priorities - federally-aligned priority topics with direct links to user needs



### Facilitating collaborations within the coastal community

- Coastal Model Testbed – allows for automated evaluation of coastal numerical models under constrained initial/boundary conditions
- DUNEX – multi-investigator experiment designed to study storm processes and impacts

In order to support the next generation of coastal scientists and engineers, we align research with societal needs to show the value and impact of the research we do.

## FOSTERING COLLABORATIVE RESEARCH BY:

---



### Hosting topical workshops for researchers and users

- Define the state of current research on coastal dunes and identify information needed by decision makers
- Dunes on Developed Coastlines (Kitty Hawk, NC 2016)
- Storm Processes and Impact (St. Petersburg, 2018) – focus on modeling, forecasting, and communicating storm processes and impacts



### Connecting academic researchers with funding

- Topical workshops - focus research priorities on how to effectively address pressing questions and provide information to coastal stakeholders
  - Dunes - \$265.6K for 5 projects
  - Storms - \$775K for 8 projects
- FY19 Federal Priority Topics - \$5M for Academic Awards and Student Challenges



# WHAT'S NEXT?

- Engage with a broader group of academic researchers and stakeholders.
- USCRP community planning meeting – 5-year review
- Topical workshop – input request at poster session





# THANK YOU

- **USCRP exists and continues to grow because of the hard work, dedication and creativity of MANY**, including the co-authors, Jeff Lillycrop, John Haines, Britt Raubenheimer, workshop organizers, paper authors, proposal reviewers, experiment planners, ....
- **USCRP Fostering Academic Research** at the poster session this afternoon
- **DUNEX Discussion** today at 6:15 pm in the Banyan Breezway
- **USCRP 2019 Academic Member Survey**  
<https://www.surveymonkey.com/r/XNRC552>

<https://uscoastalresearch.org/>

