

Decadal Visioning Workshop

THE FUTURE OF COASTAL PROCESSES RESEARCH



Transportation

PUBLIC TRANSIT FROM DOWNTOWN ST. PETE

- » Sun Runner bus to and from St. Pete Beach <https://psta.net/services/sunrunner/>
- » Suncoast Beach Trolley runs North and South along the beaches <https://www.psta.net/how-to-ride/schedulesmap/suncoast-beach-trolley/>

SELF DRIVE

If you have a rental car you can easily drive to the beach. Public parking is available for a fee.

RIDE SHARE

Uber/Lyft is easy to use and will cost about \$20 one way to the closest beaches (St. Pete Beach and Sunset Beach).

WELCOME TO ST. PETERSBURG, FLORIDA!

Welcome to St. Petersburg, Florida! If you have some free time during your stay and would like to check out local coastal sites of interest, below is a list of locations that highlight a range of coastal uses and challenges. All travel times listed below are from the Hilton St. Pete Bayfront Hotel.

1: CLEARWATER BEACH



Coastal use: Tourist beach, Pier 60 for fishing

Coastal challenge: Event driven erosion leading to restoration efforts including dune repairs, sea oat planting, and offshore artificial reef to build marine life habitat.

How to get here: About a 45 minute drive, parking available near Pier 60

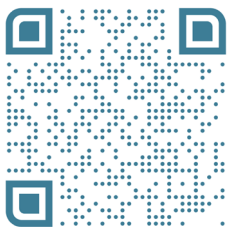
What to do here: Walk the beach, grab a bite to eat at a variety of restaurants (Frenchy's is a popular spot on the beach), watch the nightly Sunset Celebration and craft market.

2: MADEIRA BEACH



Coastal use: Popular recreation beach for tourists and locals, with nearby restaurants and shops. The Shoreline Resort is also the location of a USGS CoastCam and study site. <https://cmgds.marine.usgs.gov/data/madeirabeach/>

Coastal challenge: High levels of erosion prompted groins to be placed in the area in the 1960s to help reduce erosion and limit the need for beach renourishments; the groins are currently being restored.



Use this QR code to access other workshop information.

How to get here: Drive about 25 minutes. To view the USGS CoastCam park in the public lot at 14400 Gulf Blvd, Madeira Beach, FL 33708. Walk south past 2 buildings and look up - you will see the CoastCams mounted on the roof of the Shoreline Resort.

What to do here: If parked near the USGS CoastCam, you can walk down the beach to Caddy's restaurant with a roof-top view. Near-by John's Pass Village & Boardwalk has restaurants, shops and is a popular fishing spot.

3: SUNSET BEACH/ST PETE BEACH



Coastal use: Residential, local surf spot

Coastal challenge: Event driven erosion by Hurricane Idalia in August 2023 leading to emergency dune restoration

efforts built in winter 2023. Ongoing disputes with residents about federal guidelines for beach nourishments, are causing delays in needed renourishments.

How to get here: Drive about 25 minutes. Parking is in several lots along the beach road (8140 W Gulf Blvd, Treasure Island, FL 33706) or at Caddy's restaurant. If you're using the Sun Runner you can hop off at nearby St Pete Beach to enjoy beachfront restaurants and live music at Jimmy B's or Toasted Monkey.

What to do here: View dune building project and erosion. Eat at Caddy's or enjoy live music at Ka'Tiki.

4: PASS-A-GRILLE BEACH



Coastal use: Popular beach with tourists and locals

Coastal challenge: Extensive beach and dune erosion from Hurricane Idalia in August 2023 as well as long-term erosion leading to local

beach renourishment efforts in 2024.

How to get here: About 25min drive. Parking available along the beach road (900 Gulf Way, Pass-a-Grille Beach, FL 33706)

What to do here: Walk the beach, grab a bite to eat nearby or at the beach snack shack Paradise Grill.

5: FORT DE SOTO



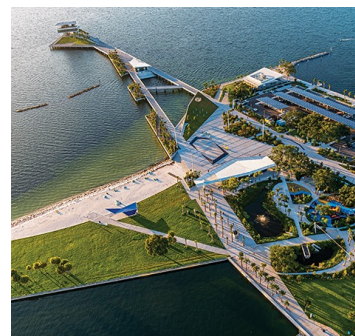
Coastal use: Uninhabited barrier island; turtle nesting, shorebird habitat, mangroves and seagrass; a short-term USGS camera is installed here (off of Fort De Soto trail, north of the historic Fort De Soto).

Coastal challenge: Shoreline erosion, sediment transport, and migrating sand bar leading to navigation issues and shoal management efforts.

How to get here: About 30 min drive. Fee to enter the county park is \$5.

What to do here: Rent a kayak or paddleboard. Visit the historic fort. Fish from the pier. Enjoy the natural beach away from the crowds.

6: ST PETE PIER



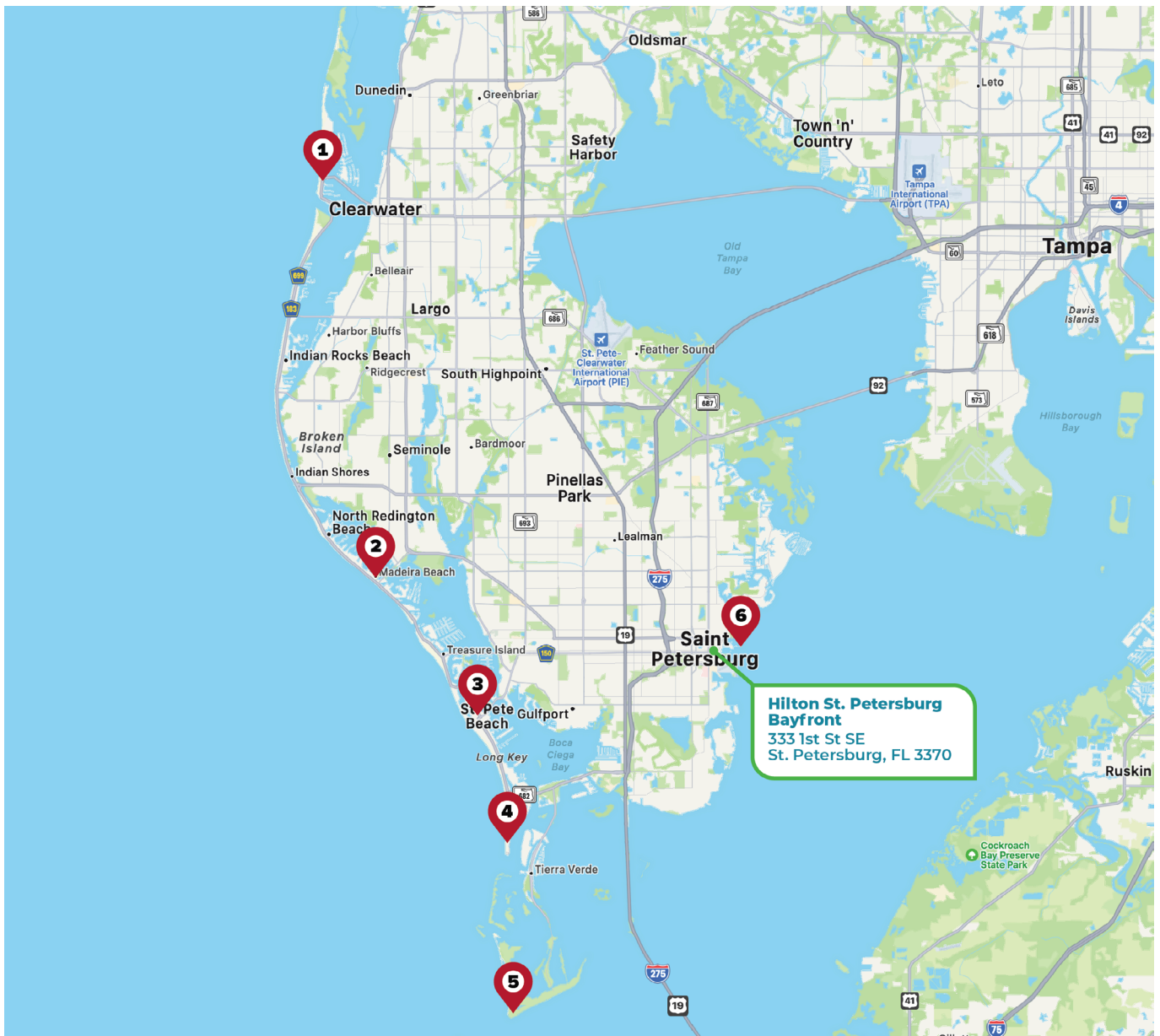
Coastal use: Recreation for locals and tourists. Newly rebuilt in 2020.

Coastal challenge: Water quality issues have led to restoration efforts. Increased seagrass growth and tidal

flats helping to store and treat stormwater runoff and provide bird habitat.

How to get here: Walk 10 mins from Hilton Bayfront. Tram on the pier to transport you to different spots.

What to do here: Environmental education center, restaurants, live performers. Children's playground and splash pad. Small beach on Tampa Bay. Fishing platform at the end of the pier.



1 Clearwater Beach
1 Causeway Blvd
Clearwater Beach, FL 33767

2 Madeira Beach
14400 Gulf Blvd
Madeira Beach, FL 33708

3 Sunset Beach/St Pete Beach
8140 W Gulf Blvd
Treasure Island, FL 33706

4 Pass-a-Grille Beach
900 Gulf Way
Pass-a-Grille Beach, FL 33706

5 Ft De Soto
3500 Pinellas Bayway South
Tierra Verde, FL 33715

6 St Pete Pier
600 2nd Ave NE
St. Petersburg, FL 33701