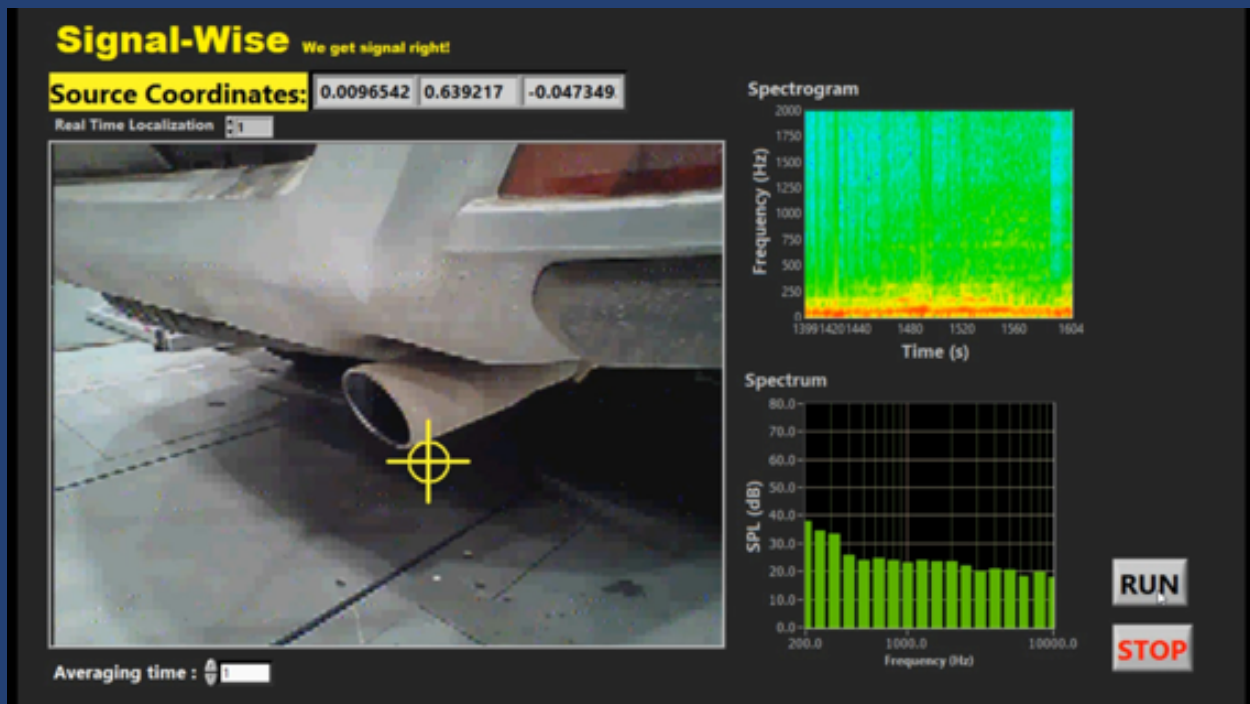


Signal-Wise: we get the signal right

Sound Viewer

Muffler Noise

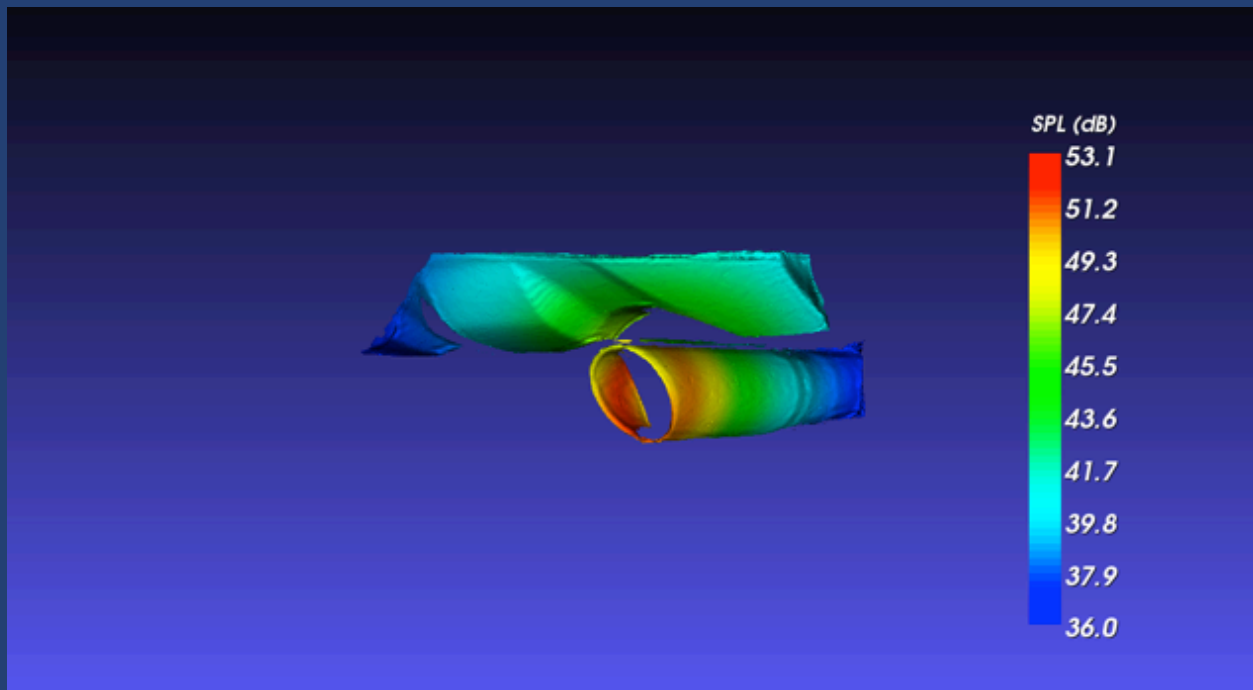
Sound Viewer is capable of handling both airborne and structure-borne sounds, non-stationary and stationary sounds over the frequency range of 20 – 20,000 Hz.



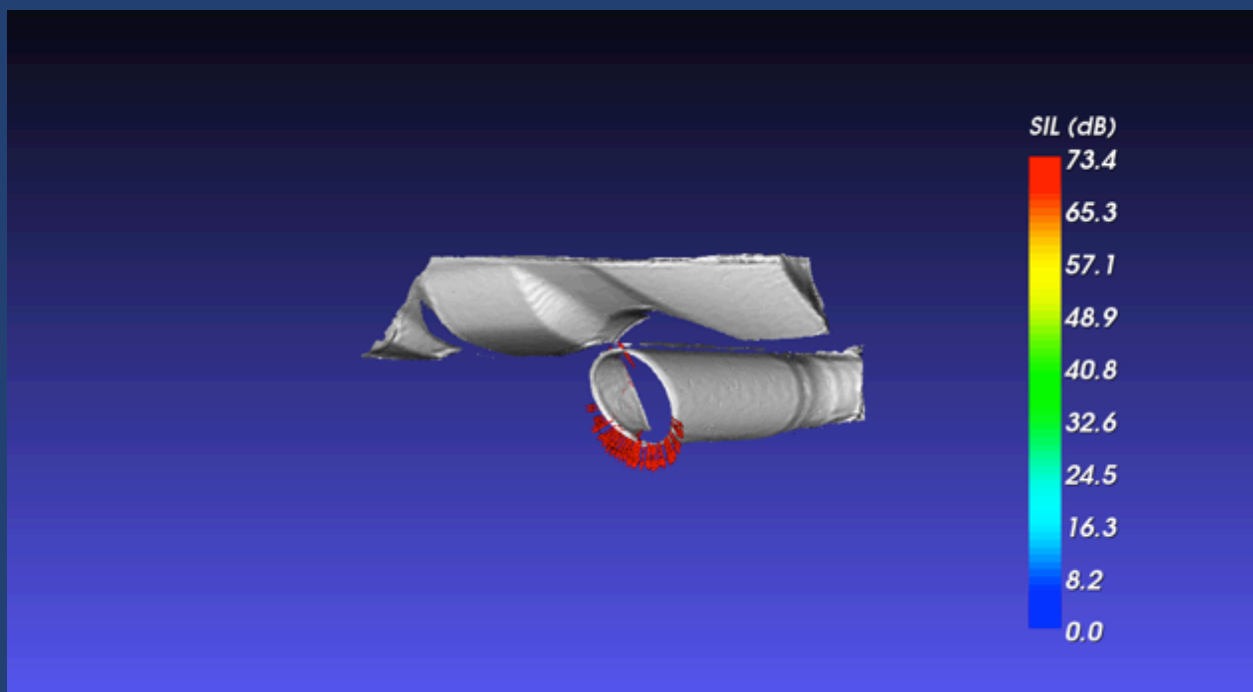
Sound Viewer enables one to locate muffler noise in real time and in post processing. In particular, it enables one to visualize the acoustic pressure and acoustic intensity vector distributions on an arbitrarily shaped surface,¹ and estimate the acoustic power over user-defined surface area.

¹ Provided that the 3D model of the structure is available. This 3D model can be generated by CAD or using a 3D scanner, which are not included in the Sound Viewer package.

Signal-Wise: we get the signal right



Sound Viewer enables one to visualize the acoustic pressure distribution on an arbitrarily shaped surface.



Sound Viewer enables one to visualize the acoustic intensity vector distribution on an arbitrarily shaped surface.