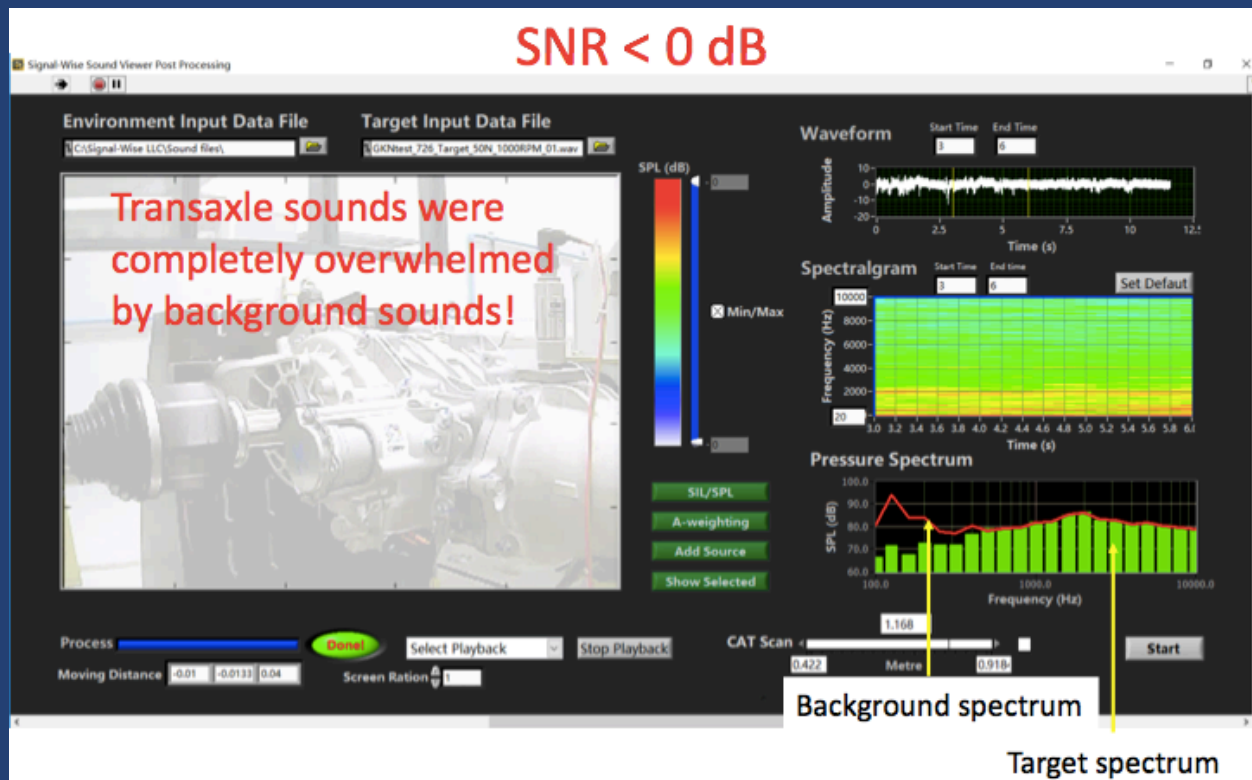
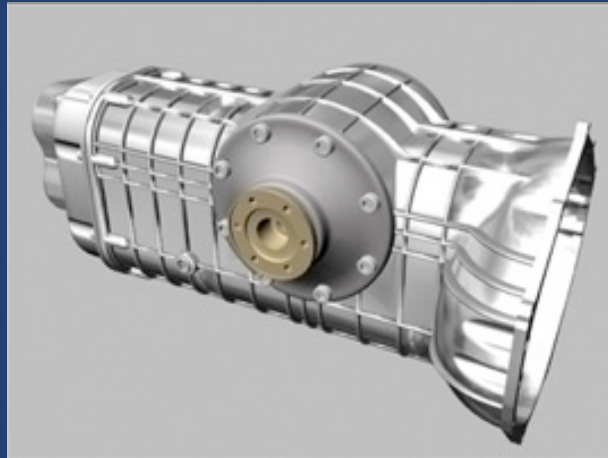


# Signal-Wise: we get the signal right

## Sound Viewer

### Negative SNR

Sound Viewer enables one to perform noise diagnosis in a highly non-ideal environment where SNR is negative.



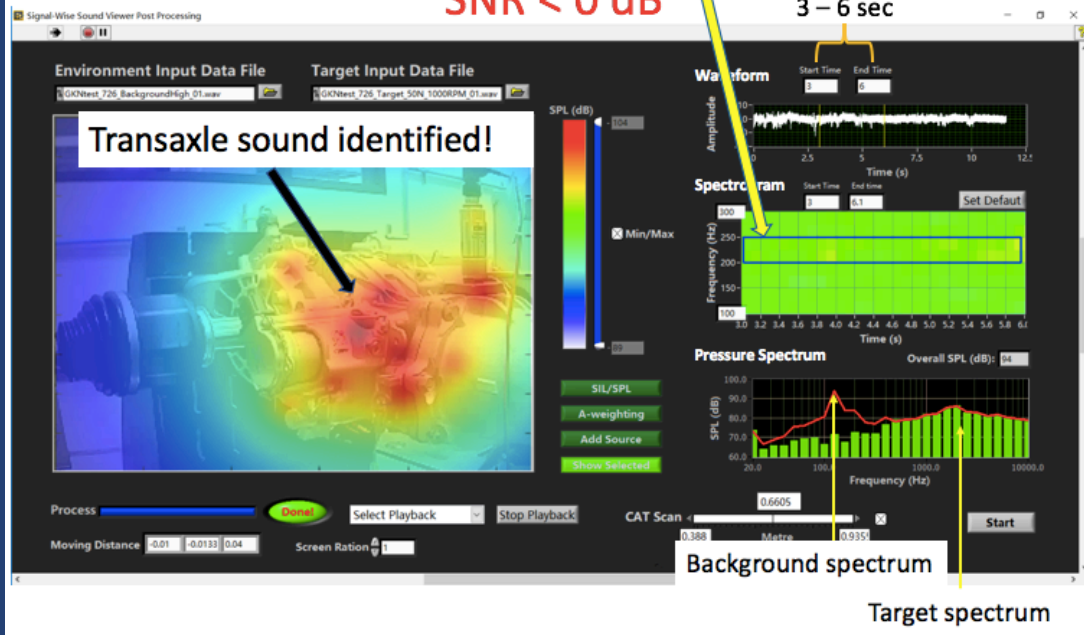
Typically, when  $\text{SNR} < 0 \text{ dB}$ , source localizations cannot be done effectively.

# Signal-Wise: we get the signal right

Extracting the transaxle and shaft sounds at 13<sup>th</sup> order: 200 – 250 Hz

SNR < 0 dB

3 – 6 sec



Extracting the transaxle and shaft sounds at 13<sup>th</sup> order: 350 – 500 Hz

SNR < 0 dB

6 – 9 sec

