

# Signal-Wise: we get the signal right

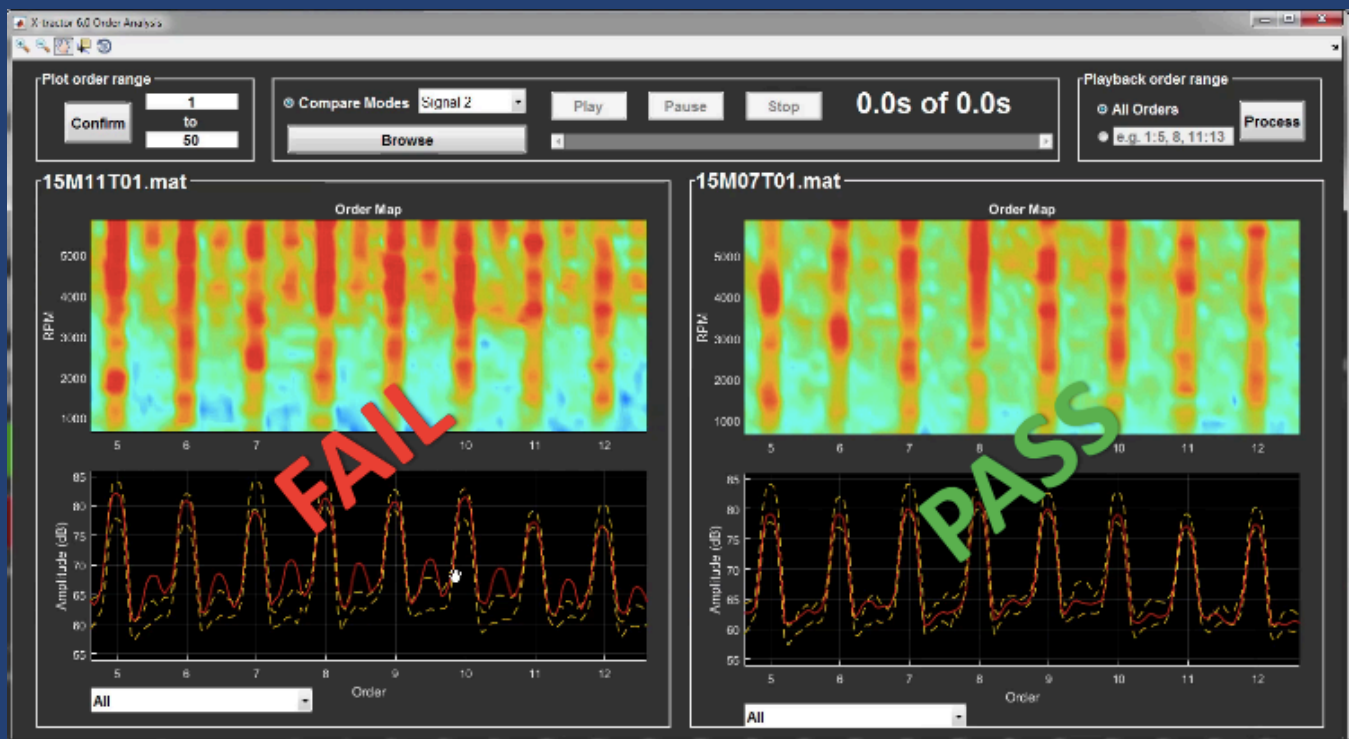
## X-tractor

### QC Testing for Electric Motors at Variable Speeds

X-tractor enables one to perform in-line and end-of-line QC testing on a factory floor.



Random background noise and interfering signal levels on a factory floor can be very high.



X-tractor enables one to extract target signals in a highly non-ideal environment and discern good products and defective ones. In particular, it can not only detect a defective product, but also reveals what defects are, at which orders and the corresponding speed ranges.