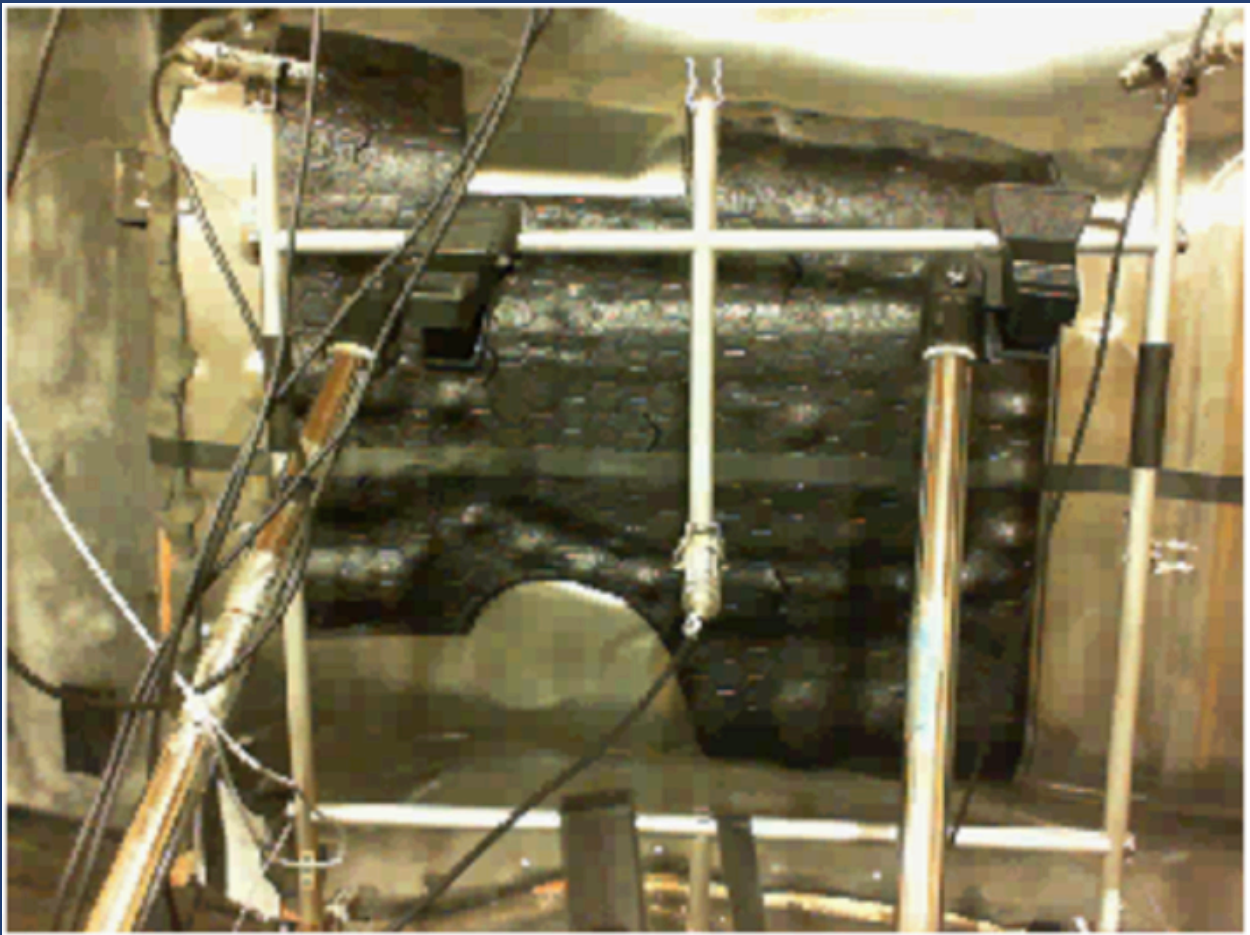


Signal-Wise: we get the signal right

Sound Viewer

Vehicle Underbody

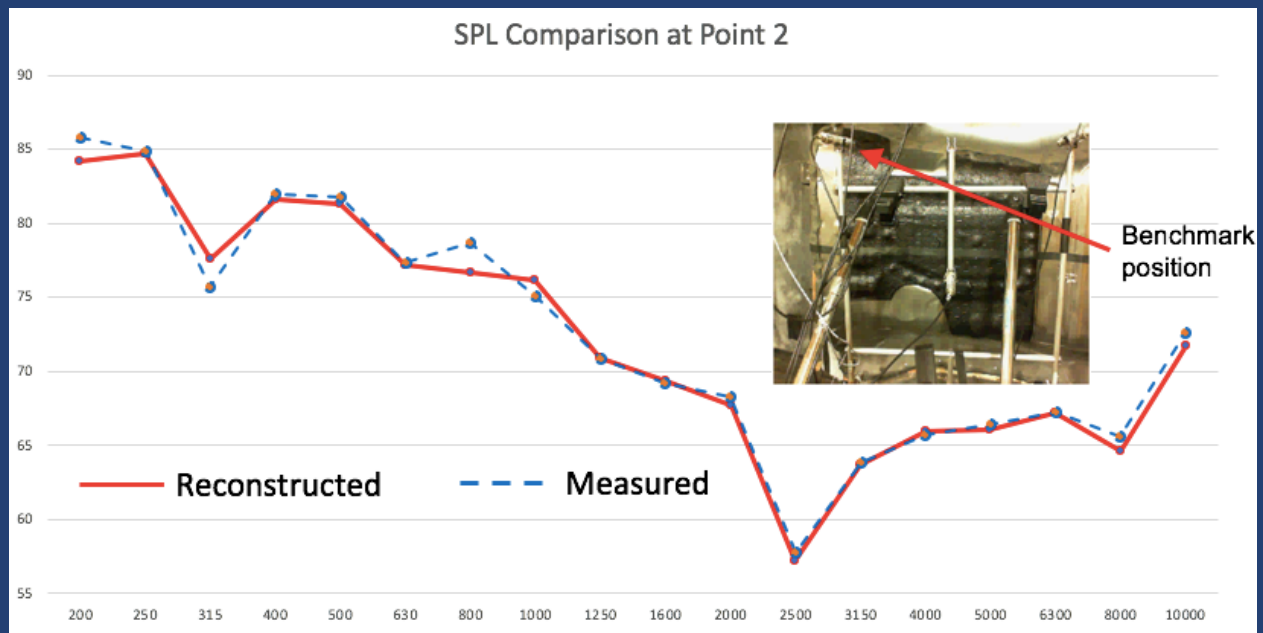
Sound Viewer enables one to reconstruct the acoustic pressure distributions on the surface of an arbitrarily shape structure.¹



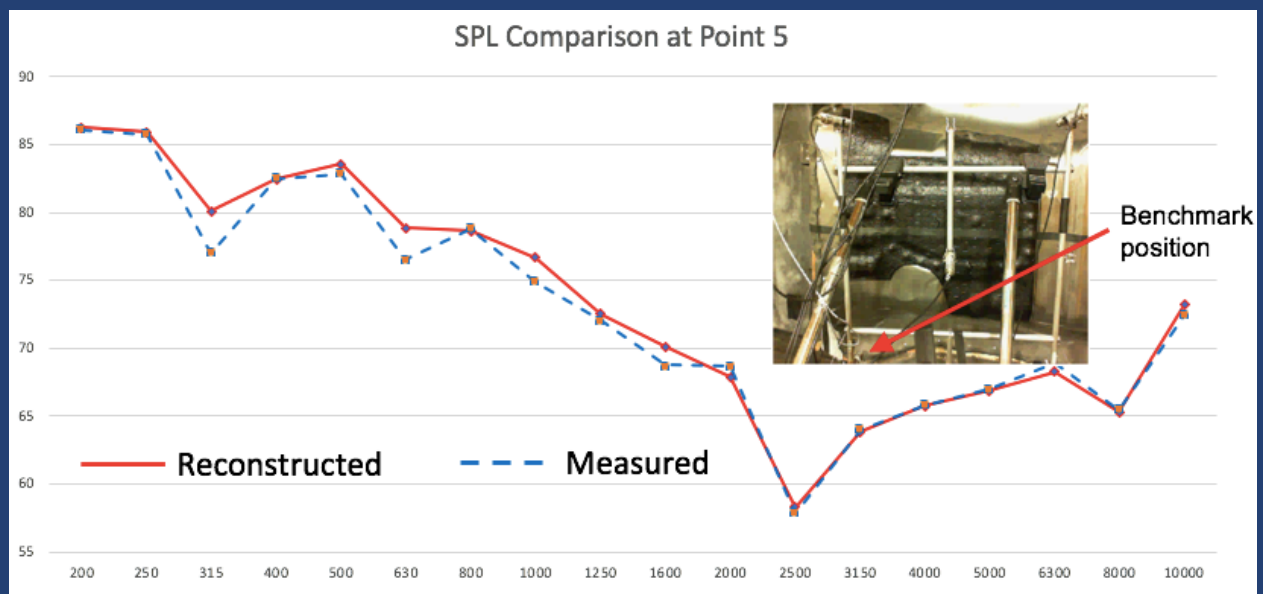
A typical automobile underbody structure.

¹ Provided that the 3D model of the structure is available. This 3D model can be generated by CAD or using a 3D scanner, which are not included in the Sound Viewer package.

Signal-Wise: we get the signal right



Validation of the reconstructed acoustic pressure spectrum and benchmark one measured by the microphone at position 2 next to the vehicle underbody.



Validation of the reconstructed acoustic pressure spectrum and benchmark one measured by the microphone at position 5 next to the vehicle underbody.