



250 BEL MARIN KEYS BLVD #D4 - NOVATO, CA 94949

833.321.TEST

CERTIFICATE OF ANALYSIS

Rogue River Organics

Sample 150-052024-381

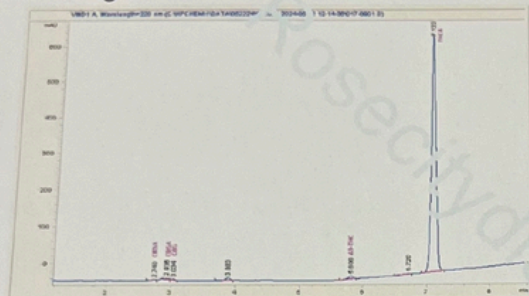
Gorilla Glue #4

Sample Submitted: 05-20-2024; Report Date: 05-22-2024

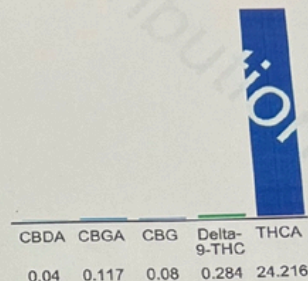
Gorilla Glue #4

Plant Material: Hemp Flower

Chromatogram



Cannabinoid Profile



Cannabinoid Profile by HPLC

0.28%

Delta-9-THC

0.00%

CBL

24.74%

Total Cannabinoids

Cannabinoid	% wt	mg/g
CBDA	0.04	0.4
CBGA	0.117	1.17
CBG	0.08	0.8
Delta-9-THC	0.284	2.84
THCA	24.22	242.16
Total Cannabinoids	24.74	247.4
Calculated Total THC	21.52	215.21
Calculated CBD Yield	0.04	0.35

$$\text{Calculated Total THC} = \text{Delta-9-THC} + 0.877 * \text{THCA}$$
$$\text{Calculated Maximum CBD Yield} = \text{CBD} + 0.877 * \text{CBDA}$$

Marin Analytics, LLC

250 Bel Marin Keys Blvd, Suite D4

Novato, CA 94949

833-321-TEST / info@marinanalytics.com

[Signature]

Mike Clemmons
Lab Manager

This sample has been tested by Marin Analytics, LLC using valid testing methodologies and a quality system. Values reported relate only to the sample tested. Marin Analytics, LLC makes no claims as to the efficacy, safety, or other risks associated with any detected or non-detected levels of any compounds reported herein. This Certificate shall not be reproduced in full without the written approval of Marin Analytics, LLC. Copyright 2023 Marin Analytics, LLC All Rights Reserved.