



Greetings to all CCA alums, supporters, and our school families,

In case you have not heard, we have some very exciting news to share with you about Carolina Christian Academy. We just celebrated 50-plus years at a recent homecoming rally. We are thankful for the excellent response from our alumni. CCA has served the Thomasville and Lexington areas with quality Christian education for more than 50 years. We have faced difficult days, but God has preserved the school to serve this present age. We exist to make a local and global impact. We hope you will continue to read and discover how your alma mater is being a blessing.

We aim to create a spiritual culture that develops strong Christians with a solid biblical worldview in an academic setting that strives for excellence. That means we must be intentional and focused on helping families and churches bring their children to saving faith in Jesus. Then we disciple and equip them to live transformational lives. We want to produce men and women of faith who know how to think and speak the Truth with love and offer grace while working uncompromisingly in the marketplace of our world. As we send students to universities, Bible colleges, or directly into the workplace; we want each of our students to be equipped to become successful and influential workers, businesspeople, public servants, first responders, pastors, teachers, missionaries, and whatever God wants them to be!

God is doing a new thing here at CCA and opening some great doors of ministry. A Chinese proverb says: "If the old doesn't go, the new won't come." We are seeing God raise a new generation of God-fearing worshippers, and we are often amazed at what God is doing here on this campus. To allow God to do what He desires today, however, we have chosen to adjust in several ways. One of those ways is to freely open our doors to children and young people who need us from a variety of Christian homes.

Our academy has experienced nearly 50 percent growth in the last three years, from the upper 40s to 140. We have recently launched the global arm of CCA, calling it the Carolina Christian Global Academy (CCGA). We have partnered with some schools in mainland China to offer a quality Christian education to those families who do not have access to a Christian school. As we grow the school and develop various educational, social, and spiritual programs, we are committed to finding and hiring the best teachers. We are maintaining the highest academic standards possible. We will be developing a Christian-based sports program, expanding our music program, and developing a Bible catechism for preschool through high school to help fulfill our mission to develop and disciple our children and youth with a solid Christ-centered biblical worldview.



The CCA board has also launched a ministry called Carolina Christian Ministries which will oversee the development and management of the campus. The academy will always be one of our major priorities. However, we want to utilize these 26 acres for maximum impact on this community and the larger Christian community. We are already renting our facilities to Carolina Christian Youth Camp and an Hope International Missions Spanish ministerial group. We host the annual summer T-Ville vintage power show on our campus. We also partner with Faith Community Chapel to host and help facilitate one of the largest live nativities on the East Coast. Last year almost 11,000 people drove through “Journey to Bethlehem” and heard a clear presentation of the gospel.

The rapid growth of CCA and its partner ministries has presented us with significant challenges. As we continue to grow in the academy, with an anticipated enrollment of around 200 next fall (2023/2024 school year), **we must build!**

It has been a dream for a long time to add a large multipurpose gymnasium building to our campus. The dream is becoming a reality. At our recent homecoming, the Lord miraculously **provided a matching grant of \$250,000.00** through the generosity of one of our alums, Senator Steve Jarvis. We are grateful for his support and now have the challenge of matching those funds. During that event, God spoke to someone attending, and they gave \$25,000.00 toward matching these funds. Others have been contributing as well. We received another \$10,000 this week. What excites me and thrills me is that some of our students have been bringing their offerings into the school office to help us match the funds. Our current student body love CCA! We are also **offering you an opportunity to partner with us in this growing ministry.**

Considering all that the Lord has given us to do, we need to build and expand. We are focusing on two key campus development projects:

1. **Build a Multipurpose Gymnasium Building**

At the 50th Homecoming, we launched our capital campaign to build a multipurpose building with a full-size basketball and volleyball court. It will house some campus offices and become our large auditorium for graduation events and other gatherings. This building is being built in **honor of Lank J. Sechrest**. It is not an exaggeration to say that we would not have a school today without the sacrifice and labor of former President Lank Sechrest. Lank was a worthy hero who gave his all.

He made a tremendous personal sacrifice and used his local furniture business to serve this community and bless this school repeatedly. We want to build a lasting legacy to honor his memory and lifelong commitment to our school. We invite you to be a part of this campaign. Every dollar will match the \$250,000.00 given to us by



Senator Jarvis. So, **every dollar is essential**. If you want to give to this campaign and honor a worthy man who has given so much to the school, then **mark your pledge or offering for the multipurpose building on the enclosed pledge card**. If you choose to make a pledge, you can choose to make monthly payments for up to 2 years. No amount is too small!

2. Update our Present Ballfield

The ball field will be named after **Bobby Woodlieff**. Bobby Woodlieff has spent his life serving CCA. He has given sweat, blood, and tears and often worked in the dirt to develop these grounds. He has spent many hours on a tractor or working with a shovel to make these grounds beautiful and useful. So, we are dedicating part of these grounds to Bobby. Also, Jonathan, Bobby's grandson (who will graduate from CCA this year as a third-generation family member who loves the school), loves to play ball and has always dreamed of having a level and quality ball field to play on. So, we are raising funds to level and resurface the ball field, build a perimeter fence, and install a scoreboard, lights, and bleachers in honor of one of our very faithful founding board members. If you want to give to this campaign and honor a worthy man who has given so much to the school, then **mark your pledge or offering for the ball field on the enclosed pledge card**. If you choose to make a pledge, you can choose to make monthly payments for up to 2 years.

Please, see the enclosed pledge card, which will provide information about how you can give to these projects. Your gifts will honor these men who labored so faithfully through the years for the school and help us continue to provide quality Christian education for the next generation. We also still have some 50th merchandise for sale (see the back of the pledge card). You can also **give directly online by going to www.givebox.com/ccacc**. This will allow you to setup recurring payments as well.

We cannot wait to hear from you and to start building! When half of the funds are raised, we will begin. If you cannot give a large amount, consider giving steadily in small increments. Whatever we do, let's do something! These kids are counting on their school family.



DAVID W. BLACK

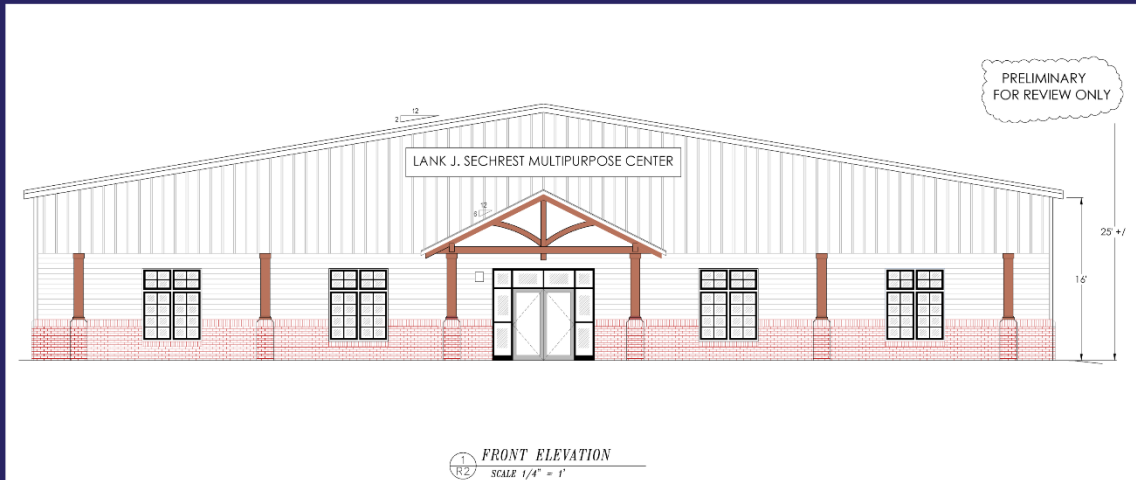
President

CAROLINA CHRISTIAN ACADEMY

(772) 486-6328
david.black@cca-nc.com
cca-nc.com

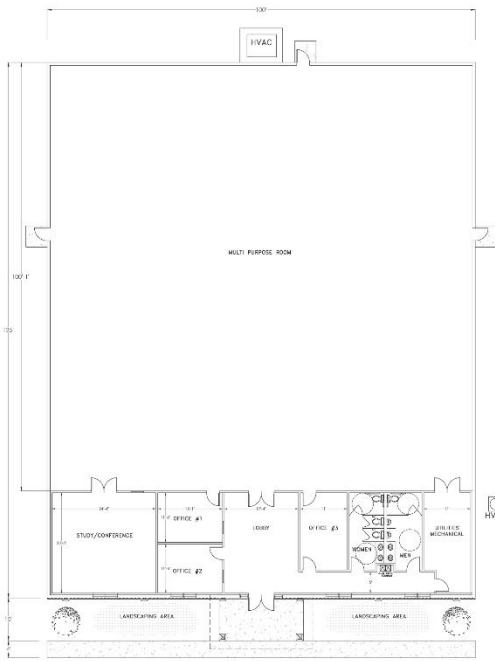


CAROLINA CHRISTIAN ACADEMY

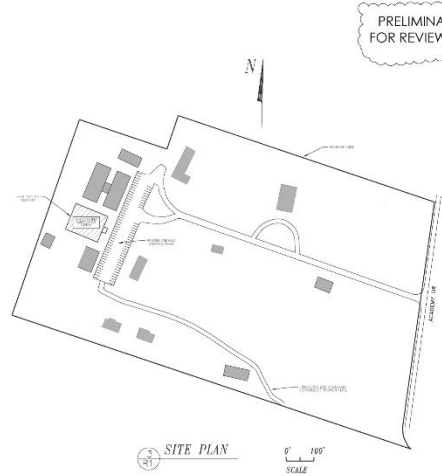


Sheet #
R2

<small>THIS DRAWING & CONTENTS ARE THE PROPERTY OF LITWIN ENGINEERING & CONSULTING, PA. UNLESS INDICATED OTHERWISE, ALL RIGHTS ARE RESERVED. REPRODUCTION OR TRANSMISSION IN ANY FORM OR BY ANY MEANS, WITHOUT PERMISSION IN WRITING, IS STRICTLY PROHIBITED.</small>	CAROLINA CHRISTIAN ACADEMY 294 ACADEMY DR THOMASVILLE, NC 27360	LITWIN ENGINEERING & CONSULTING, PA C. BRENT LITWIN, PE 2000 SANDY RD. THOMASVILLE, NC 27360 PHONE - 336-817-6554 FIRM LICENSE # C-3020	
	SCALE: 1/4" = 1' DATE: 10/10/22	DRAFTSMAN: B. LITWIN CHECKED:	JOB NUMBER: 2214 DRAWING NUMBER: R2



1
R1 FLOOR PLAN
SCALE 1/8" = 1'



PRELIMINARY FOR REVIEW ONLY

Sheet #
R1

<small>THIS DRAWING & CONTENTS ARE THE PROPERTY OF LITWIN ENGINEERING & CONSULTING, PA. UNLESS INDICATED OTHERWISE, ALL RIGHTS ARE RESERVED. REPRODUCTION OR TRANSMISSION IN ANY FORM OR BY ANY MEANS, WITHOUT PERMISSION IN WRITING, IS STRICTLY PROHIBITED.</small>	CAROLINA CHRISTIAN ACADEMY 294 ACADEMY DR THOMASVILLE, NC 27360	LITWIN ENGINEERING & CONSULTING, PA C. BRENT LITWIN, PE 2000 SANDY RD. THOMASVILLE, NC 27360 PHONE - 336-817-6554 FIRM LICENSE # C-3020	
	SCALE: 1/8" = 1' DATE: 10/10/22	DRAFTSMAN: B. LITWIN CHECKED:	JOB NUMBER: 2214 DRAWING NUMBER: R1

