

# EBM(A) SUBMERSIBLE DRAINAGE PUMP



The EBM(A) series is a portable small lightweight submersible drainage pump. The small outer diameter allows it to be used in an 8" well. The EBM(A) is made of wear-resistant rubber and ductile iron for improved durability.

The pump has a bottom suction, vertical discharge with a thin water jacket to assist with motor cooling. With the built in cooling jacket, the pump can run continuously at a low sump level without a risk of burning up the motor.

## APPLICATION

- Civil engineering, building sites, basements or other utility pits, rainwater and mud water

## SPECIFICATION

- Water temperature: up to 104°F
- PH: 6.5 to 8.5
- Power supply: single phase 120V ± 10%, 60Hz
- Insulation class: F
- Protection class: IP68
- Cable length: 26ft
- Max water depth: 32ft

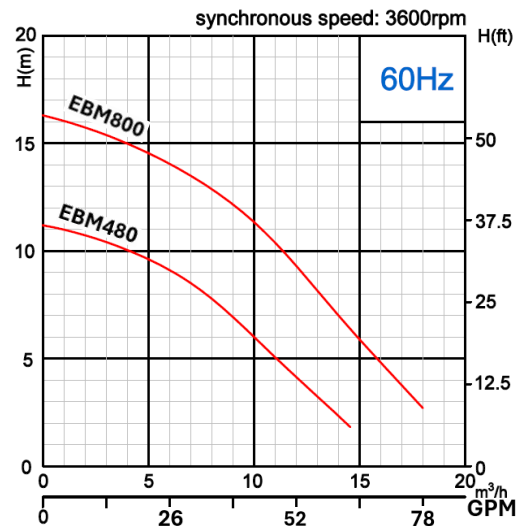


## SPECIAL FEATURES ON REQUEST

- Other voltages
- Barbed or NPT thread discharge

## PERFORMANCE CURVE & TABLE

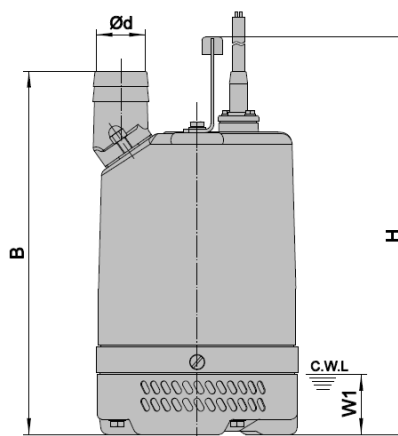
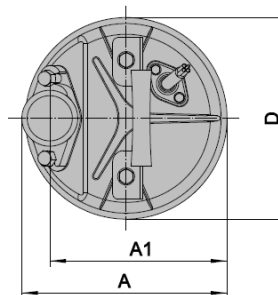
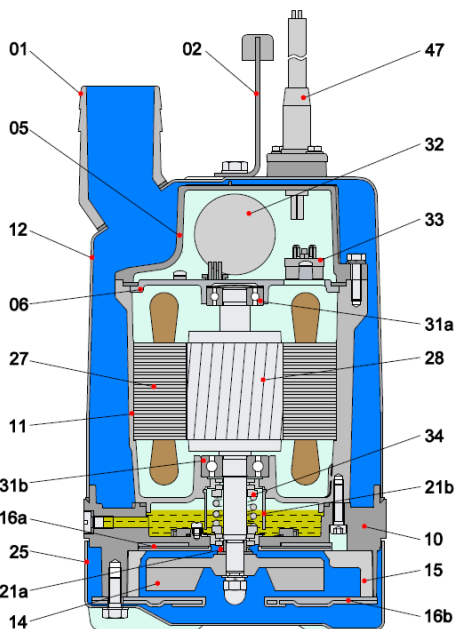
Note: EBM: single phase; EBM...F: single phase with float switch



Model	Outlet		Motor Power		Rated current (A)		Rate capacity		Rated head	Rated head	max capacity		max head	Impeller passage
	mm	inch	kW	HP	220V	120V	m³/h	GPM	m	ft	m³/h	GPM	m	mm
EBM480(F)	50	2	0.48	0.65	3.0	5.5	7	31	8	26	15	64	11.5	6
EBM800(F)	50	2	0.75	1	5.0	9.2	10	44	11	36	18	79	15/16	6



# EBM(A) SUBMERSIBLE DRAINAGE PUMP



C.W.L: continuous running water level

## Materials of components

Item No.	Part name	Material	Item No.	Part name	Material
01	Hose coupling	Aluminum die casting	21a	Oil riser	NBR
02	Handle	Rubber & steel	21b	Sand guard	LDPE
05	Upper cover	Aluminum die casting	25	Strainer	Steel
06	Up-Bearing house	Cast iron	27	Stator	
10	Seal house	Aluminum die casting	28	Rotor	Shaft:AISI420SS
11	Motor body	Aluminum die casting	31a	Bearing	Ball bearing
12	Outer casing	Steel	31b	Bearing	Ball bearing
14	Impeller	Ductile iron	32	Capacitor	
15	Diffuser	NBR	33	Motor protector	
16a	Plate	NBR & Steel	34	Mechanical seal	Ceramic-Sic/Carbon-Ceramic
16b	Intel plate	NBR & Steel	47	Cable	H07RN-F

## DIMENSIONS & WEIGHTS

Model	d	A	A1	B	D	H	W1	N.W	G.W	Packing dimensions
	mm	mm	mm	mm	mm	mm	mm	Kg	Kg	mm
EBM480(F)	50	190	163	296	187	328	50	11.6	13.1	365x225x255
EBM800(F)	50	190	163	336	187	368	50	13.8	15.3	405x225x255





## EBMA:

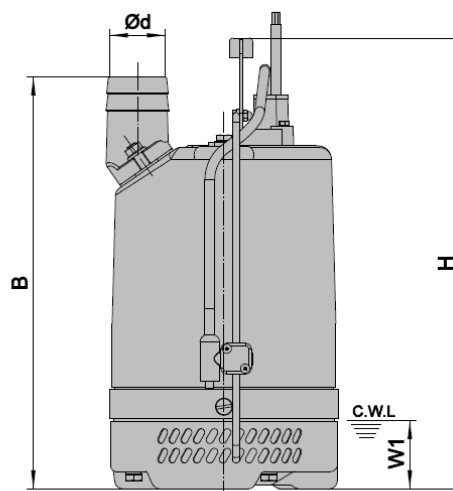
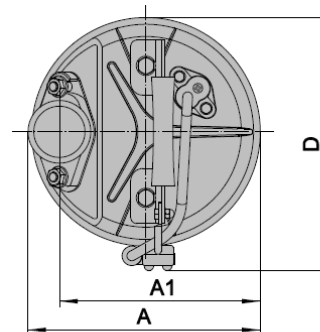
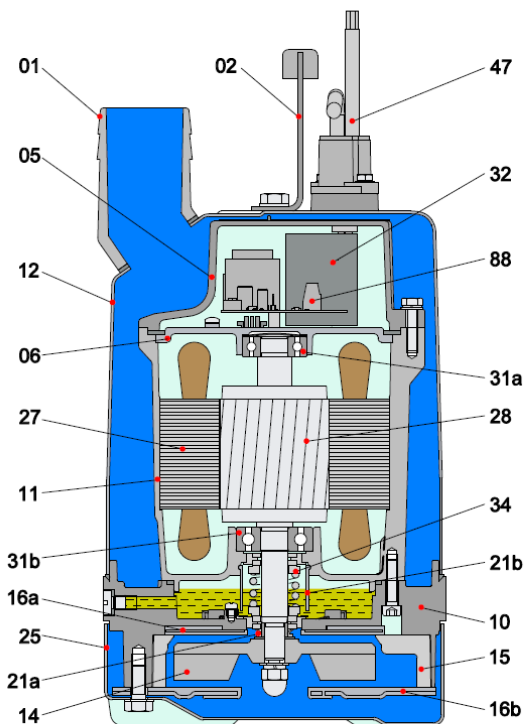
The EBMA is the same pump as the EBM with the automatic water sensor. The EBMA comes with the same materials of construction as the EBM and the same hydraulic curves.

- When the water level is lower than the liquid level probe, the pump stops working within 60 seconds. When the water level rises to reach the liquid level probe, the pump starts working again, and the height of the liquid level probe can be adjusted freely.
- When the voltage is abnormal or overloaded, the pump will automatically stop working and recover after 5 minutes. When the impeller is stuck and locked, the pump will stop working immediately and the pump can be recovered through disconnecting and then connecting to the power supply.
- When the motor is over temperature, the pump will stop working automatically, and the pump will start up automatically after the motor is cooled.
- You can query the cumulative operation time of the pump and the latest 5 fault records by checking the display panel.

Model	Outlet		Motor Power		Rated current (A)		Rate capacity		Rated head	Rated head	max capacity		max head	Impeller passage
	mm	inch	kW	HP	220V	120V	m <sup>3</sup> /h	GPM	m	ft	m <sup>3</sup> /h	GPM	m	mm
EBMA480(F)	50	2	0.48	0.65	3.0	5.5	7	31	8	26	15	64	11.5	6
EBMA800(F)	50	2	0.75	1	5.0	9.2	10	44	11	36	18	79	15/16	6



# EBM(A) SUBMERSIBLE DRAINAGE PUMP



C.W.L.: continuous running water level

## Materials of components

Item No.	Part name	Material	Item No.	Part name	Material
01	Hose coupling	Aluminum die casting	21a	Oil riser	NBR
02	Handle	Rubber & steel	21b	Sand guard	LDPE
05	Upper cover	Aluminum die casting	25	Strainer	Steel
06	Up-Bearing house	Cast iron	27	Stator	
10	Seal house	Aluminum die casting	28	Rotor	Shaft:AISI420SS
11	Motor body	Aluminum die casting	31a	Bearing	Ball bearing
12	Outer casing	Steel	31b	Bearing	Ball bearing
14	Impeller	Ductile iron	32	Capacitor	
15	Diffuser	NBR	34	Mechanical seal	Ceramic-Sic/Carbon-Ceramic
16a	Plate	NBR & Steel	47	Cable	H07RN-F
16b	Intel plate	NBR & Steel	88	Controller block	

Model	d	A	A1	B	D	H	W1	N.W	G.W	Packing dimensions
	mm	mm	mm	mm	mm	mm	mm	Kg	Kg	mm
EBMA480(F)	50	190	164	296	207	348	50	11.8	13.3	365x225x255
EBMA800(F)	50	190	164	336	207	368	50	14	15.5	405x225x255

