



Public Health

Prevent. Promote. Protect.

**Christian County
Health Department**

Christian County Health Department

Annual Report 2024

December 1, 2023 -

November 30, 2024

Table of Contents

Our Information and Mission	3
About Us	4
About the Christian County Health Department	5
About this Annual Report	5
Message from the Administrator	6
Finance	8
Environmental Health	10
Food Program	10
Vector	13
Water, Wells, Non-Community Water	17
Septic	18
Tanning	19
Body Art	19
Lead	20
Smoke Free Illinois	22
Flu Clinic Metrics	23
Tobacco Enforcement Program	23
PPE Distribution	24
Immunization Program & Vaccine Data	25
TB Clinic	27
Optical Program	28
Patient Demographic	29
Women, Infants & Children (WIC)	30
Social Media	31

Our Information

The mission of the Christian County Health Department is to serve our community by preventing the spread of disease, as well as protecting, assuring, and improving the public's health.



Address: 730 N. Pawnee,
Taylorville, IL 62568

Telephone: 217-824-4113

Fax: 217-824-5407

Office Hours: Monday-Friday
8am-noon, 1pm-4pm

Website: www.ccdhil.org

Facebook:



About Us

Christian County Board of Health

Dr. Leslie DeVore, DPA

Board President

Dan Held

Vice President

Lindsay Fox, BSN, RN

Secretary

Dr. Pavinderpal Gill, MD, JD

Medical Director

Janet DeClerck, CRNA

Vicki M. McMahon, MSN, RN

Dr. Benjamin Sowle, DMD

Dr. Matthew Yociss, MD

Dr. Chad Anderson, MPH, Ph.D

Administrator

Dr. Donald Graham, MD

Infectious Diseases



About the Christian County Health Department

Christian County Health Department is a single county health department covering Christian County with a current population of 33,436 residents, according to the 2020 US Census. Christian County Health Department is certified and employs 11 full time employees and 3 part time employees. The Health Department is a resolution health department that receives grant funding and local tax dollars for the TB program from a previous referendum. We promote and provide public health services to all community members within Christian County.

About this Annual Report

The Christian County Health Department prepares an annual report to provide further transparency to our community and to abide by regulatory requirements set forth in 55 ILCD Sec. 5-25013 A. 14 to submit an annual report explaining all of its activities and expenditures.

Message from the Administrator

Dear Community Members,

I hope this message finds you all in good health and high spirits as we reflect on an eventful and successful year at the Christian County Health Department. It has been one year since our move to our new, modern facility, and I am excited to share the progress we have made and the positive impact we have had in serving our community.

We are proud to say that our transition to the new space has been incredibly successful. The new facility has allowed us to develop our programs and services, ensuring we continue to meet the growing needs of our community. Our commitment to improving public health remains as strong as ever, and we are thrilled with the opportunities our new location offers to innovate and provide services that are more comprehensive.

Over the past year, we have made several exciting additions to our programs and services:

- **Expanded Immunization Services:** We have broadened our vaccine offerings to include new and crucial vaccinations, such as those for shingles and RSV (Respiratory Syncytial Virus). These vaccines are essential for preventing the spread of diseases in our community, and we are proud to provide them to ensure the health and safety of our residents.
- **STI Program:** We launched a Sexually Transmitted Infections (STI) program this year, offering testing and treatment to those in need. This program is a vital step in addressing the public health challenges associated with STIs, and we are committed to providing confidential, professional care to those who require these services.
- **Free Car Seat Checks:** In our continued effort to promote the safety of our youngest community members, we have introduced free car seat checks. Our Public Health Nurse's Certification as a National Child Passenger Safety Technician ensures that families can bring their vehicles and car seats in for a thorough inspection, ensuring the proper installation and safety of their children while traveling.



Message from the Administrator

- **Mental Health Case Manager:** We are also pleased to announce the addition of a Mental Health Case Manager to our team. She has been working closely with numerous individuals, helping them navigate the system, secure housing, and connect with vital services. Her role has already made a significant impact in supporting the mental health needs of our community.
- **Annual Health Fair:** We also had the privilege of hosting our Open House earlier this year, which was a tremendous success. We are thrilled to announce that this event will be turned into an Annual Health Fair, providing an opportunity for community members to engage with our health services and learn more about how we can support their well-being.

This year, we have seen significant growth, and our team has worked diligently to provide essential services to those who need them most. Our commitment to improving the health and quality of life for Christian County residents is stronger than ever, and we remain grateful for your continued trust and support. As we look ahead, we are excited for the future and the continued opportunity to make a positive difference in our community. Thank you for your ongoing support, and we look forward to another year of growth, service, and collaboration. Wishing you all good health and happiness.



A handwritten signature in black ink, which appears to read "Dr. Chad Anderson".

Dr. Chad Anderson, MPH, Ph.D

Finance

Revenue Source	Revenue Collected	Expenses
Fees Collected	\$123,150.22	\$112,443.53
Private Pay Insurance	\$105,803.68	\$57,462.54

Grant	Award Amount	Percentage
Family Case Management	\$74,200.00	5.58%
WIC	\$71,766.00	5.40%
Local Health Protection	\$85,000.00	6.40%
Smoke Free IL	\$10,000.00	0.75%
Emergency Preparedness	\$51,559.40	3.88%
Vector Surveillance	\$13,000.00	0.98%
Tick Surveillance	\$4,125.00	0.31%
Lead Poisoning	\$29,300.00	2.21%
Body Art & Tanning	\$1,725.00	0.13%
Safe Drinking water	\$400.00	0.03%
Tobacco Enforcement	\$10,000.00	0.75%
SIPA*	\$350,000.00	26.34%
NEHA	\$5,000.00	0.38%
Residential Sharps	\$3,500.00	0.26%
ACES	\$200,000.00	15.05%
I-VAC	\$8,300.97	0.62%
Covid-19 Health Equity Program	\$62,500.00	4.70%
MRC	\$5,000.00	0.38%
LHD Respiratory Surveillance & Response**	\$140,000.00	10.54%
Covid Crisis ***	\$90,317.41	6.80%
Opiod Prevention	\$3,000.00	0.23%
ClearWin	\$110,000.00	8.28%
TOTAL AWARD	\$1,328,693.78	
TOTAL GRANT EXPENSES	\$553,186.86	
*Five Year Award		
**Two Year Award		
***Three Year Award		

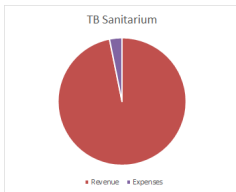
Finance

TB Sanitarium Revenue

Real Estate Taxes	\$76,277.89
Interest	\$4,559.27

TB Sanitarium Expenses

Salaries/Fringe	\$0.00
Admin & Medical Costs	\$0.00
Contingency Fund	\$2,642.34

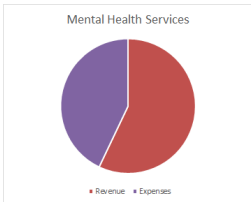


708 Revenue

708 Levy Fund	\$26,952.42

708 Expenses

Personnel	\$17,640.00
Mental Health Services	\$0.00
Substance Use Disorder	\$2,642.34



Food Program

Under the provisions set forth in the Christian County Food and Sanitation Ordinance, Environmental Health staff are responsible for protecting individuals consuming foods in Christian County from food-borne illnesses. Activities include issuance of permits, inspections, destruction of unwholesome food, and complaint investigations. Administrative hearings are an opportunity for establishments with numerous violations to meet at the Health Department for an educational session to reduce future violations.

FOOD PROGRAM

Food Establishment Inspections	458
Permits Issued	270
Mobile Permits	12
Temporary Event Permits Issued	203
Cottage Food Permits Issued	23
New Plan Review	11
Follow Ups and Consultation	135
Complaints	2
Administrative Hearings	6

Food Program

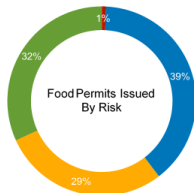
All establishments that sell food in Christian County are required to hold a valid Christian County food license. Each establishment is then placed into a category depending on the amount of food preparation that occurs at that establishment.

Multi-High - High Risk that has excessive repeated priority violations. These establishments pose a higher relative risk of causing foodborne illness.

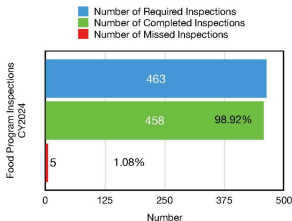
High Risk - A food establishment that presents a high relative risk of causing a foodborne illness based upon the large number of food handling operations typically implicated in foodborne outbreaks and/ or the type of population served by the facility.

Medium Risk - A food establishment that presents a moderate relative risk of causing foodborne illness based upon few handling operations typically implicated in foodborne illness outbreaks

Low Risk - A food establishment that presents a low relative risk of causing a foodborne illness based upon few or no food handling operations typically implicated in foodborne illness outbreaks.



- Multi-High
- High
- Medium
- Low



2024

98.92% food safety
inspections completed

Food Program

A temporary food establishment is a food establishment that operates for a period of time not more than 14 consecutive days in conjunction with a single event or celebration.

The Environmental Health staff conducts inspections of these temporary establishments to ensure they are following the proper food handling operations as outlined in the Christian County Food and Sanitation Ordinance.

Temporary Food Event Inspections

Completed Inspections	Incomplete/Missed Inspections
178	25



ANNUAL FOOD WORKSHOP MARCH 27, 2024

Morning Attendance (9AM-12PM)	25
Afternoon Attendance (1PM-4PM)	33
Speakers	7

Vector

Illinois Department of Public Health awards annual grants to local health departments to conduct vector surveillance and control measures. Environmental Health Staff trap mosquitoes to track the presence of West Nile Virus. The trap is filled with an organic liquid so that adult mosquitoes are drawn to the trap and are caught in a net. The net is gathered and taken to the health department and the mosquitoes are frozen. The frozen mosquitoes are counted, ground and spun in a centrifuge and then tested for West Nile.

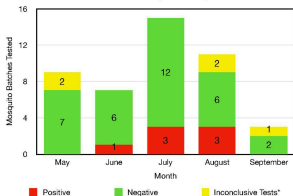
A mosquito becomes infected with West Nile Virus by biting a bird that carries the virus. Most human infections are the result of a bite from an infected mosquito. The Environmental Health Staff also collects dead birds, such as blue jays, crows, and robins to test for West Nile Virus. These birds are more susceptible, with a higher rate of testing positive for West Nile Virus. The birds we collect are frozen and sent to the IDPH state lab for further testing.

Environmental Staff collected ticks from locations to test for tick borne disease like Lyme disease. We also collected bats to send to the IDPH state lab to test for rabies.

	WEST NILE			
		Positive	Negative	Inconclusive
Mosquito Samples	45	7	33	5
Bird Samples	4	0	2	2
	RABIES			
Bats Tested	6	0	3	3
	TICK RELATED DISEASES			
Ticks Submitted for Testing	3	0	3	0

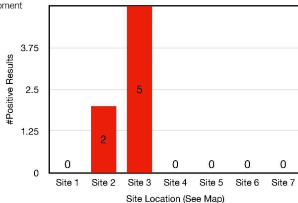
Vector

West Nile Testing Results by Month

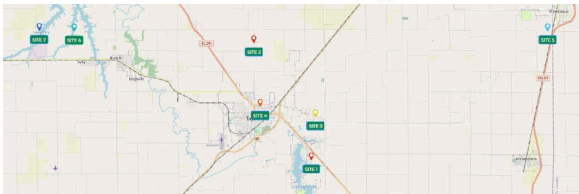


*Inconclusive results were due to battery fails or equipment failure during testing

West Nile Positive Results by Location



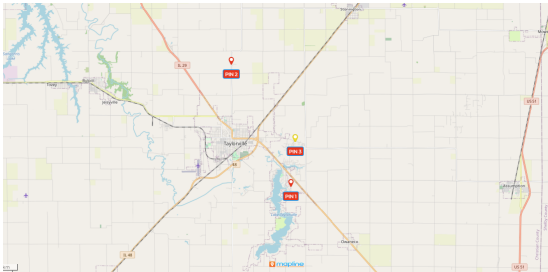
Mosquito Site Testing Areas



Vector

Christian County is home to numerous lakes, ponds, and areas of standing water, which can serve as breeding grounds for mosquitoes. Effective mosquito control begins with the application of larvicide. When an area tests positive for West Nile virus, the Environmental Health Department promptly treats nearby lakes, ponds, wetlands, or other significant sources of standing water to mitigate the risk. Additionally, residents may contact the department to schedule an appointment for the treatment of areas of concern on their property.

Larvicide Application Sites

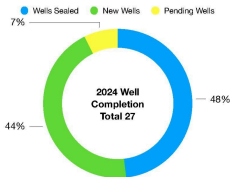
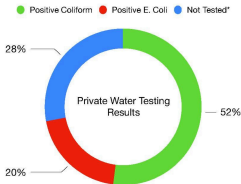


Tick Drags Completed	9
Tick Sites Tested	9
Larvicide Sites Applied	3
Mosquito Sites Tested	7

Water, Wells, & Non-Community Water

Potable water is water that is safe to drink or to use in food preparation under the provision set forth in the Christian County Ordinance governing Water Well Permit and Water Supply. Environmental Health focuses on reducing the risk for transmission of communicable disease by promoting the proper design, construction, and sealing of drinking water wells. A major consideration in constructing water wells is to prevent contamination from surface or shallow ground water, sewage disposal systems, and other hazardous sources from entering the well.

Water, Wells, Non-Community Water	
Private Water Sample Results Received	55
Unsatisfactory Samples	26
Non-Community Water Surveys	3
Non-Community Water Samples	20
Permits for New Wells	14
Permits for Sealed Wells	13

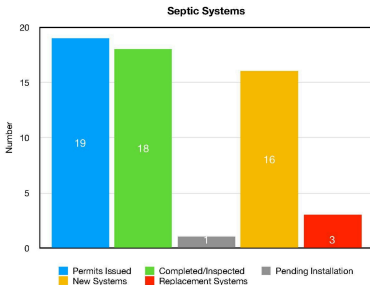


*Samples not tested due to collection date too old to test or presence of chlorine in sample.

Septic

The Private Sewage Disposal Program operates under the provisions set forth in the Christian County Private Sewage Disposal Systems Ordinance. Environmental Health Staff are responsible for protecting residents from serious health hazards caused by malfunctioning or improperly constructed private sewage disposal systems.

SEPTIC	
Inspections Completed	18
Pending Inspections	1
Permits Issued	19
Replacement Systems	3
New Systems	16
Pumper Truck Inspections	7
County Registered Contractors	20



Tanning and Body Art

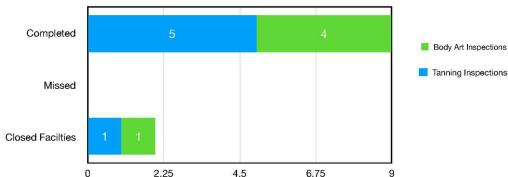
Upon receipt of a completed registration for a tanning facility, Environmental Health Staff conducts an inspection to monitor compliance with the IL Administrative Code.

TANNING	
INSPECTIONS COMPLETED 2024	5
MISSED INSPECTIONS	0
CLOSED FACILITIES	1

All establishments providing body art services such as tattooing, piercing, branding, or scarification are required to be registered. Upon receipt of a completed registration application, Environmental Health Staff conducts an inspection to monitor compliance.

BODY ART	
INSPECTIONS COMPLETED 2024	4
MISSED INSPECTIONS	0
CLOSED FACILITIES	1

Body Art and Tanning Inspections 2024



Lead

Lead screenings are completed to determine lead levels in children. Early detection of lead poisoning is important in the prevention of learning disabilities, behavioral problems, brain damage, muscle weakness, or even death.

Our lead analyzer reads a capillary blood sample in three (3) minutes.

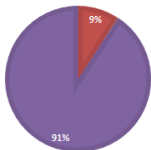
Screenings Completed	551
----------------------	-----

Lead Tests Conducted

Summary of Lead Test Results	
PB Level	Number of Patients
No result	0
0-4	500
5-9	40
10-14	9
15-19	1
20-29	1
30-44	0
45-69	0
>/= 70	0
Total Tests	551

LEAD TESTING RESULTS

■ Positive ■ Negative



Lead

Individual Lead Cases	
Cases Open Automatically	5
Cases Open Manually	19
Total Number Of Cases Open	24

LEAD	
Risk Assesments Completed	5
Lead Hazard Homes	4
CLEAR Applications Recieved	4
CLEAR WIN Applications Approved	2
Lead Abatement Contractors	2
Active Mitigations	2

Smoke Free Illinois

Illinois Department of Public Health provides funding to the Christian County Health Department to implement strategies for prevention of youth tobacco initiation, secondhand smoke elimination, including promotion and enforcement of the Smoke-Free Illinois Act, and tobacco cessation, including promotion of and referral to the Illinois Tobacco Quitline.

The Smoke-Free Illinois Act (Public Act 95-0017) protects the public from the harmful effects of exposure to tobacco smoke by prohibiting smoking in public places and places of employment and within 15 feet of any entrance, exit, windows that open, or ventilation intake of a public place or place of employment. Funding is provided to certified local health departments to conduct compliance inspections.

SMOKE FREE ILLINOIS	
Complaints	2
Investigations	2
Citations Issued	4

Emergency Response

Drive Thru Flu Clinics

Date	Location	Vaccine's Administered
16-Sep	Pana Fire Station	13
23-Sep	Christian County Fairgrounds	50
18-Oct	Pana Fire Station	16
28-Oct	Christian County Fairgrounds	47

Tobacco Enforcement Program (TEP).

The TEP allows for compliance monitoring of tobacco retail establishments in Christian County to assure tobacco products are not sold to underage individuals as defined by state law. The TEP establishes a program of compliance monitoring, compliance checks, and information on what constitutes illegal sales to underage individuals.

	Number of Retail Establishments
Compliance Checks	9
Distribution of educational materials	41

Emergency Response

Distribution of PPE to facilities in Christian County

	Carriage Crossing	Taylorville Estates	Taylorville Care Center	Hickory Estates Pana	Prarie Rose Pana	Taylorville PD	Taylorville Jr/ Sr. High School
KN95 Masks	1 case	4 cases	6 cases	7 cases	12 cases		
Particulate Respirator	1 case						
Face Shields	50				1 box		
Hand Sanitizer	1 case					3 cases	
Safety Glasses		25	25				375
Children's masks				1 case			
Disposable Gowns					6 cases		
Protective Underwear					6 boxes		
Hazmat suits						10 boxes	
Rubbing Alcohol						2 boxes	

Health department information booth at Taylorville Chilifest



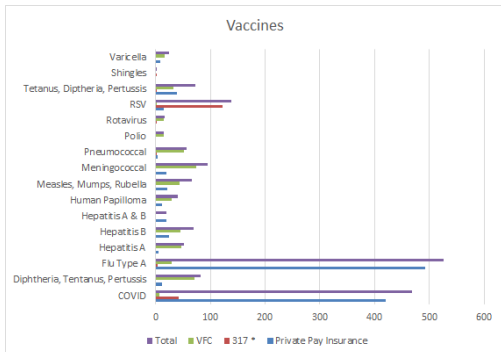
Immunization Program

ADULT IMMUNIZATIONS

Regardless of age, immunizations protect against serious and deadly diseases. Protection from vaccines received as a child can wear off over time, placing adults at risk for new and different diseases. Christian County Health Department provided multiple Flu Clinics throughout the community. We offer 317 funded COVID-19 vaccine, available to adults aged 19 and older who are uninsured or under insured.

CHILDHOOD IMMUNIZATIONS

Christian County Health Department offers Illinois' Vaccines for Children (VFC) and private pay vaccines for children. The VFC Program helps provide vaccines to children who are uninsured, under-insured, Medicaid eligible, or are American Indian or Alaskan Native. These programs help ensure all children have a better chance of getting their recommended vaccinations on schedule.



Vaccine Data

Vaccine	Private Pay Insurance	317 *	VFC **	Total
COVID	420	42	7	469
Diphtheria, Tetanus, Pertussis	11	0	71	82
Flu Type A	492	4	30	526
Hepatitis A	5	0	47	52
Hepatitis B	24	0	46	70
Hepatitis A & B	19	0	0	19
Human Papilloma	11	0	29	40
Measles, Mumps, Rubella	22	0	44	66
Meningococcal	20	0	75	95
Pneumococcal	3	1	52	56
Polio	0	0	15	15
Rotavirus	0	1	15	16
RSV	15	122	2	139
Tetanus, Diphtheria, Pertussis	39	1	33	73
Shingles	0	2	0	2
Varicella	9	0	16	25

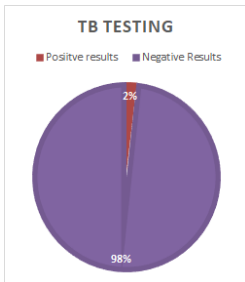
* IDPH provided COVID-19 vaccine for 18+

** IDPH provided vaccine for eligible children through 18 years of age

TB Clinic

Tuberculosis remains a current threat throughout the world. Despite being a preventable and curable disease, 1.5 millions people die from TB each year. The Tuberculosis Clinic reduces the incidences of this infectious disease in Christian County by providing screening, investigation, education, referral, and treatment of active and latent tuberculosis cases for Christian County residents. TB skin tests are available at the health department on Monday, Tuesday, Wednesday and Fridays with the exception of holidays. Our Infectious Disease Specialist, Dr. Graham oversees any positive cases.

2024 TB Test Data	
TB Tests Conducted	235
Positive results	4
Negative Results	231
Number of patients seen by Dr. Graham	4



Optical Program

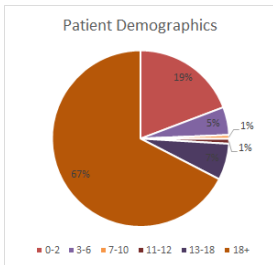
The optical program provides low or no cost eyeglasses. Patients need to bring their prescription provided to them by their eye doctor. The patient is able to select from several choices after being fitted for a size that will work best for their prescription.

Total Glasses Distributed	117
---------------------------	-----

	Glasses Distributed Per Month
December	5
January	8
February	8
March	17
April	11
May	3
June	13
July	11
August	10
September	18
October	12
November	1

Patient Demographics

Age	Total
0-2	337
3-6	90
7-10	12
11-12	16
13-18	117
18+	1182
Total in all	1754



Covid Testing

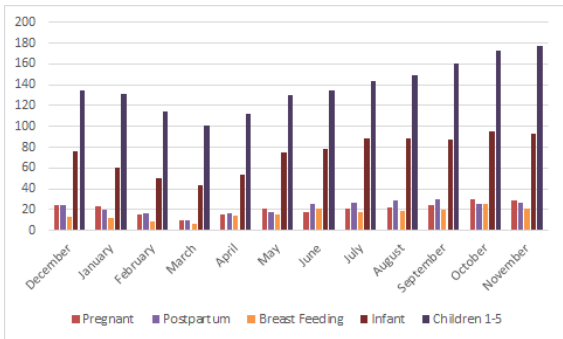
Total Tests	Distributed to LTC Facilities	Administered	Distributed to the Community
1100	400	186	514

Women, Infants & Children

The WIC program aims to safeguard the health of low-income women, infants, and children up to age 5 who are at nutritional risk by providing nutritious foods to supplement diets, information on healthy eating, and referrals to health care.

WIC Enrollment Numbers

	December	January	February	March	April	May	June	July	August	September	October	November
Pregnant	25	23	16	10	15	21	18	21	22	24	30	29
Postpartum	24	20	17	10	17	18	26	27	29	30	26	27
Breast Feeding	13	12	9	7	14	16	21	18	19	20	26	21
Infant	76	60	50	43	54	75	78	88	89	87	95	93
Children 1-5	134	131	114	101	112	130	135	143	149	160	173	177
Monthly Total	272	246	206	171	212	260	278	297	308	321	350	347



Scheduled	Walk-Ins
1268	169

Social Media

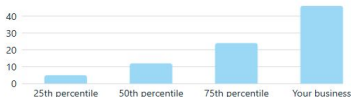
Compare your performance against businesses in the Government Agencies category
Results are based on businesses with similar organic 28-day reach in your category. [Edit category](#)

Published content 1

46

Higher than others

How often your business published versus others in this category



Views 1

89.8K -

Reach 1

83.7K ↑ 66.6%

Content interactions 1

6K ↑ 61.8%

Followers 1

Lifetime
4.1K

Content interactions 1

768

Higher than others

Typically: 373

Facebook followers 1

4.1K

Similar to others

*percentages are compared to previous year

Top views



Top reach



Top interactions

