

PLANNING CONTEXT

The Salmon Center’s Farm at Water’s Edge is The Hood Canal Salmon Enhancement Group’s (HCSEG) headquarters. The Farm is located beside the Union River Estuary Preserve. The Preserve is owned by The Washington state Department of Fish and Wildlife (WDFW) and maintained for conservation and recreation by HCSEG.

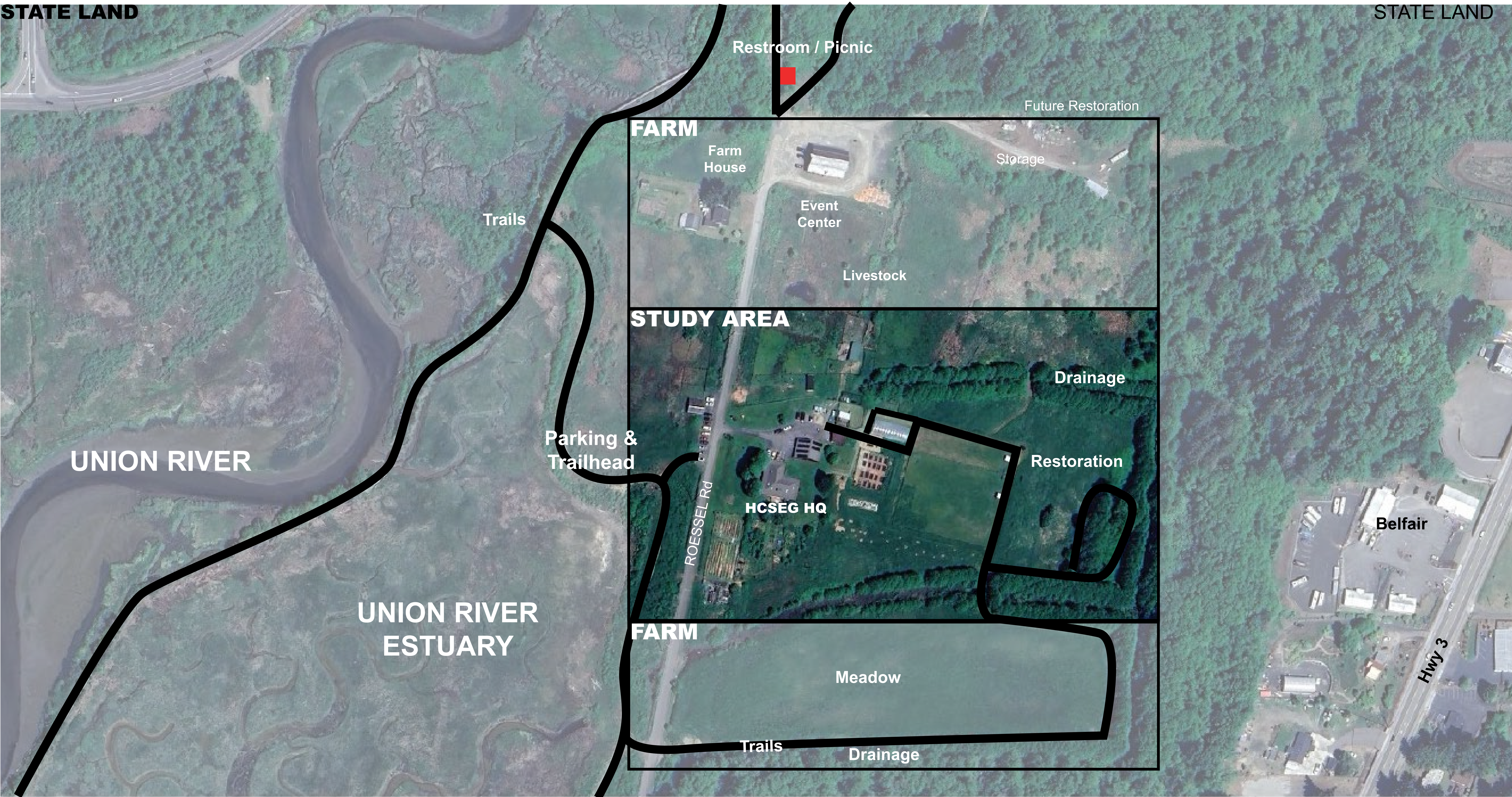
The Salmon Center and Farm at Water’s Edge has agricultural pastures and meadows, framed by windbreaks, Certified Organic gardens, and a variety of farm animals. The Hood Canal Salmon Enhancement Group strives to deepen the connection between land, people, and salmon through research, restoration, and education. The Farm serves as a community gathering place and supports the organization’s mission to ensure that wild salmon are once again abundant in the Pacific Northwest.

The Natural Areas include:

- 1. WDFW Lands
- 2. Trails
- 3 Union River Estuary Preserve

Farm Areas include:

- 1. Cultivated lands
- 2. Restoration demonstration projects
- 3. Meadows
- 4. Drainages and buffers
- 5. Animals and pastures



PLANNING CONTEXT AND AERIAL IMAGERY MAP

EXISTING CONDITIONS LEGEND

- WALKING TOUR

 - A ORIENTATION KIOSK
 - B NORTH ARRIVAL LAWN- CRAB AND PROPOSED WELCOME PAVILION SITE, BIKE PARKING
 - C PASTURES -LLAMAS, ALPACAS
 - D ANIMAL PENS - GOATS
 - E ANIMALS – DUCKS, CHICKENS
 - F ANIMALS - RABBITS
 - G DOG PARK
 - H TRAILS
 - I ALDER DRAINAGE BUFFER
 - J FUTURE AT GRADE GARDEN PLOTS
 - K FOOD PRODUCTION- HOOP TUNNELS- U PICK
 - L HOP GARDEN
 - M COMMUNITY P-PATCH BEDS
 - N PUMPKIN PATCH
 - O BERRY PATCHES U PICK
 - P FOOD FOREST
 - Q OVERWINTER POLLINATOR HABITAT
 - R BEE HIVES AND NEARBY BIRD HOUSE
- LONGER WALKING LOOP-RESTORATION

 - S WIND BREAKS / BUFFERS & DRAINAGE DITCH
 - T RESTORATION PLANTING AND MEADOWS
- CONTINUE SHORTER WALKING TOUR

 - U SPECIMEN AND NATIVE TREES, EAST LAWN
 - V NATIVE PLANT NURSERY
 - W U PICK BEDS- AT GRADE AND RAISED
 - X INNOVATIVE SEPTIC SYSTEM
 - Y ART IN GRAND LAWN
 - Z DISPLAYS IN ADMINISTRATION BUILDING AND ON WELCOME TERRACE

ART AND ARTFUL FEATURES INDEX

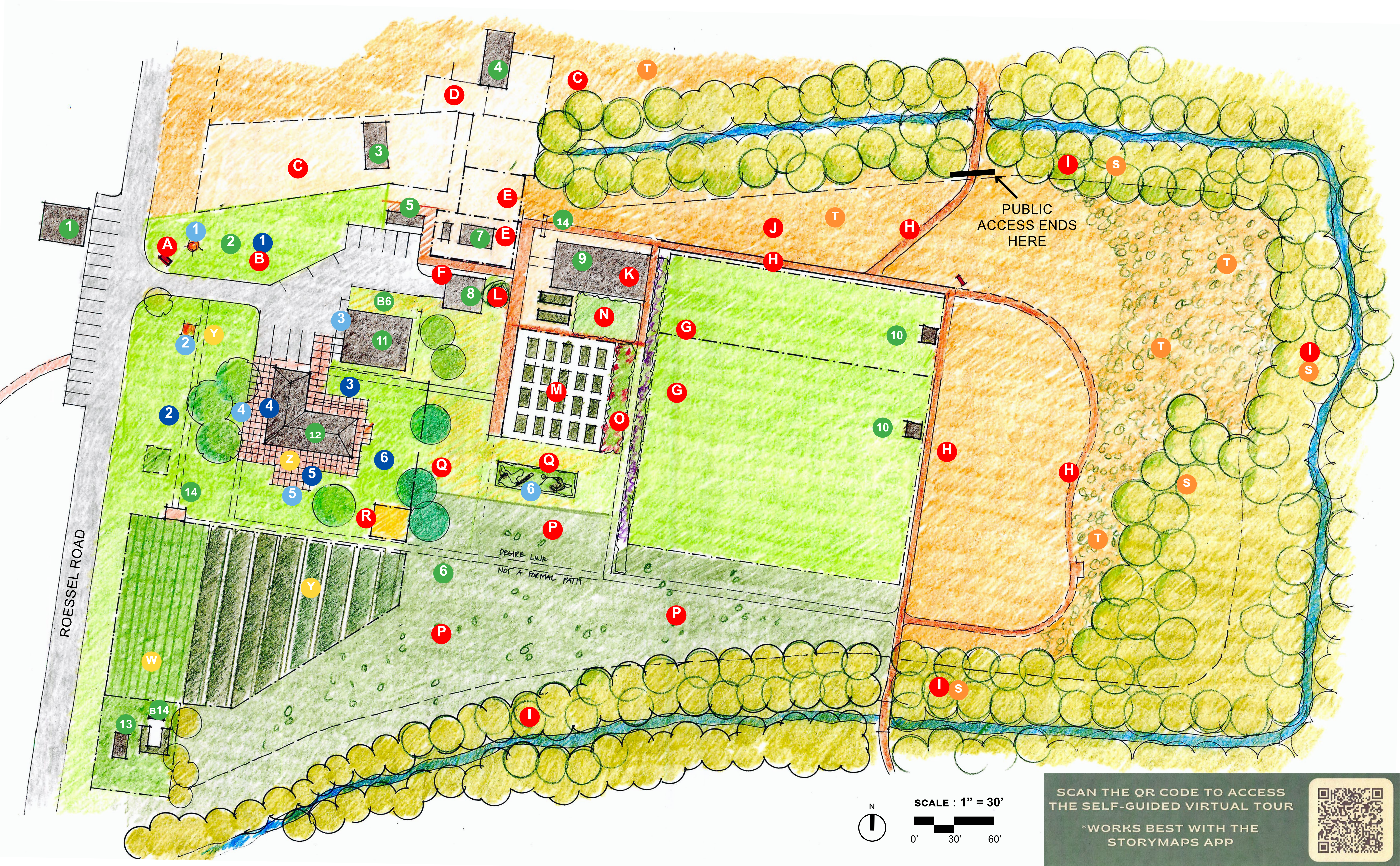
- 1 CRAB SCULPTURE
- 2 FISH IN LAWN
- 3 PAINTED FISH-EDUCATION BUILDING
- 4 PAINTED FISH- WEST TERRACE
- 5 BRONZE FISH- SOUTH TERRACE
- 6 NATURE ART- WINTER POLLINATOR

PLACES - TERRACES AND GREENS

- 1 ARRIVAL LAWN
- 2 GRAND LAWN
- 3 NORTH ENTRY TERRACE
- 4 WEST TERRACE
- 5 SOUTH TERRACE
- 6 EAST LAWN

BUILDING INDEX B1-B16

- B1 SHEEP SHED
- B2 PROPOSED LOCATION OF WELCOME CENTER
- B3 STORAGE
- B4 ALPACA BARN
- B5 STORAGE SHED
- B6 PORTABLE RESTROOM
- B7 CHICKEN COOP
- B8 TOOL SHED
- B9 TUNNEL HOOP HOUSE
- B10 SHELTERS IN DOG PARK
- B11 EDUCATION CENTER WITH SOLAR
- B12 ADMIN WITH EXHIBITS
- B13 GREEN HOUSE
- B14 ARBORS



EXISTING CONDITIONS

THE STORY OF INTERDEPENDENCY

People and Community are at the intersection of four pursuits. A visit to the Farm reinforces the inter relationship between these 4 themes. Potentially the site can be organized for people to explore a varirty of interests. The master plan proposes a network of trails and interpretive opportunities. As the site becomes more organized and the trail system develops, it will be possible to curate the visitors’ experience by offering a series of walking tour routes through the property along which visitors can learn about the following:

- 1. Animals and habitats
- 2. Food growing and production
- 3. History, community, culture, and art
- 4. Land and water management
- 5. Conservation and restoration

Visitors and users include:

- 1. Administrative office staff
- 2. Community members who come to walk dogs, harvest food and hike trails
- 3. Youth, 4H, K-12 school groups, and AmeriCorps Members
- 4. Tourists interested in recreation, nature, and culture
- 5. Farmers - staff, interns, volunteers
- 6. Hood Canal Salmon Enhancement Group

THE FARM

The Farm demonstrates how salmon, humans, and agriculture and conservation can coexist. Programs include educational programs, community U-pick gardens, food production for community sponsored agriculture programs, and demonstration restoration projects. Existing facilities include a community dog park, the former farm home that serves as administration headquarters, an education center, and a variety of farm buildings. This master plan illustrates recommended improvements to support the operations.

Visitors

People visit for a variety of reasons. The fours main activities and educational themes include:

MASTER PLAN



EDUCATION CENTER



ADMINISTRATIVE OFFICES



PLANT PROPAGATION



ENTRANCE TO DOG PARK



FOOD PRODUCTION IN TUNNEL



SMALL ANIMALS



ART WORK



VIEW TO EAST



U PICK COMMUNITY GARDEN

Animals

Visitors can see llamas, alpaca, sheep, goats, ducks, chickens, honey bees, birds, rabbits, and pollinators.

Food

Visitors can see or participate in food growing or harvesting in U-Pick gardens, community gardens, hoop houses, the food forest, raised beds and berry patches. Crops include fruit, vegetables, berries, and nuts.

Land

Land management and restoration processes can be observed in native plant propagation garden, meadows, pastures, native plant restoration sites, drainage buffers that serve as windbreaks, and in winter pollinator habitat.

Recreation & Culture

Recreation activities includes walking trails throughout the farm, hiking trails in state lands and estuary, interpretive exhibits, dog park, art viewing, gardening, bird watching, education programs, and U-Pick from berry patches, community garden plots, and hoop houses.

MASTER PLAN LEGEND

WALKING TOUR

- A ORIENTATION KIOSK - RELOCATE
- B NORTH LAWN- CRAB AND NEW WELCOME PAVILLION WITH VEGETABLE WASHING STATION
- C PASTURES - LLAMAS, ALPACAS
- D PASTURES - GOATS
- E PASTURES - DUCKS, CHICKENS
- F PASTURES - RABBITS
- G DOG PARK
- H TRAILS
- I ALDERS IN DRAINAGE BUFFER
- J AT GRADE GARDEN PLOTS NEW
- K FOOD PRODUCTION - HOOP TUNNELS - U-PICK
- L HOP GARDEN
- M COMMUNITY PEA PATCH BEDS
- N PUMPKIN PATCH
- O BERRY PATCHES U PICK
- P FOOD FOREST
- Q OVERWINTER POLLINATOR HABITAT
- R BEE HIVES AND NEARBY BIRD HOUSE

LONGER WALKING LOOP-RESTORATION

- S WIND BREAKS / BUFFERS & DRAINAGE DITCH
- T RESTORATION PLANTING AND MEADOWS

CONTINUE SHORTER WALKING TOUR

- U SPECIMEN AND NATIVE TREES, EAST LAWN
- V NATIVE PLANT NURSERY
- W U PICK BEDS- AT GRADE AND RAISED
- X INNOVATIVE SEPTIC SYSTEM
- Y ART IN GRAND LAWN
- Z DISPLAYS IN ADMINISTRATION BUILDING AND ON WELCOME TERRACE.

ART AND ARTFUL FEATURES INDEX

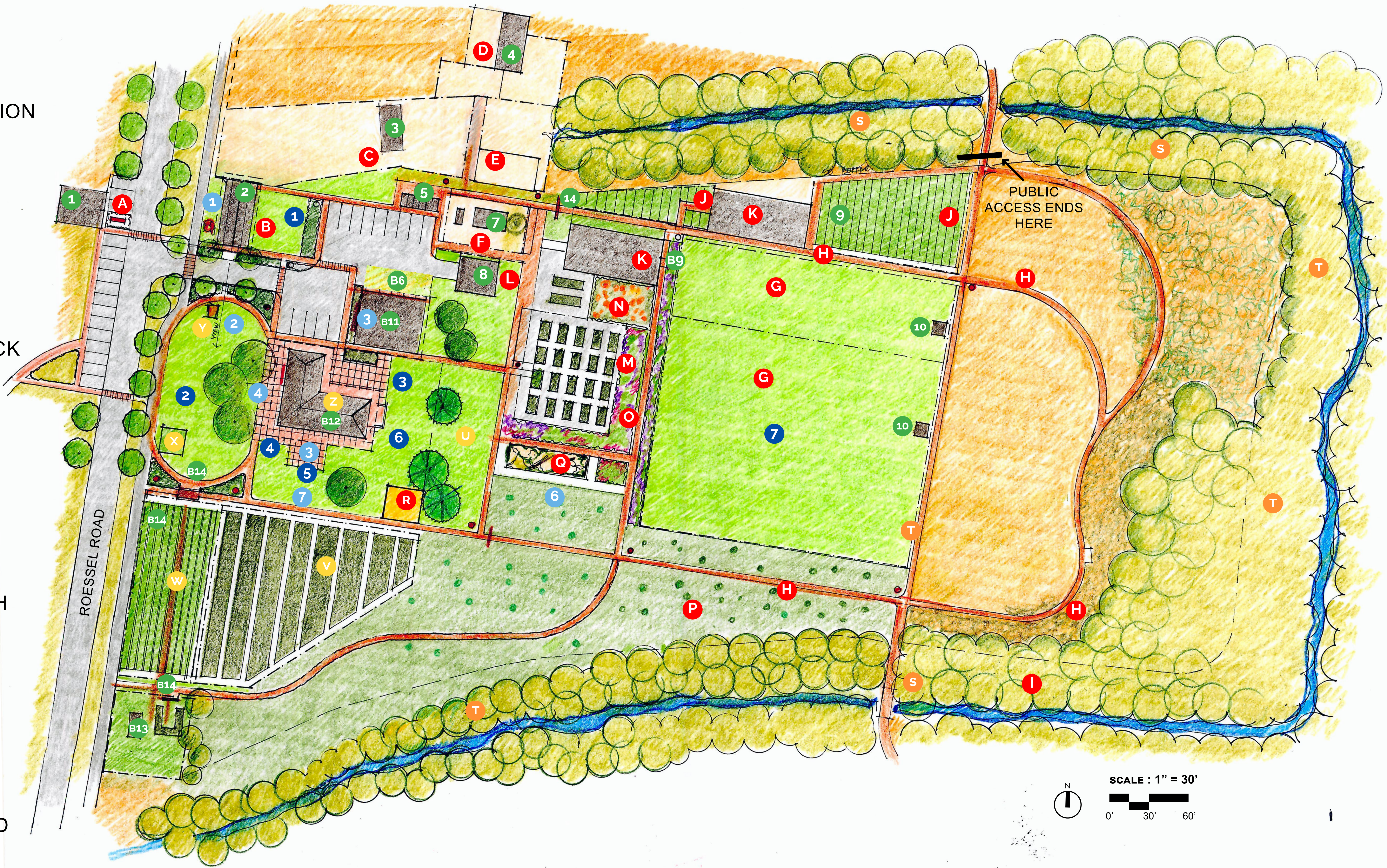
- 1 CRAB SCULPTURE
- 2 FISH IN LAWN
- 3 PAINTED FISH-EDUCATION BUILDING
- 4 PAINTED FISH- WEST TERRACE
- 5 BRONZE FISH- SOUTH TERRACE
- 6 NATURE ART- POLLINATOR OVERWINTER HABITAT
- A7 ART IN LAWN

PLACES - TERRACES AND GREENS

- 1 ARRIVAL LAWN EAST OF WELCOME CENTER
- 2 GRAND LAWN
- 3 NORTH ENTRY TERRACE
- 4 WEST TERRACE
- 5 SOUTH TERRACE
- 6 EAST LAWN
- 7 DOG PARK

BUILDING INDEX B1-B16

- 1 SHEEP SHED
- 2 NEW WELCOME CENTER BUILDING
- 3 STORAGE
- 4 ALPACA BARN
- 5 STORAGE SHED
- 6 RELOCATE PORTABLE RESTROOM (TBD)
- 7 CHICKEN COOP
- 8 TOOL SHED
- 9 TUNNEL HOOP HOUSE
- 10 SHELTERS IN DOG PARK
- 11 EDUCATION CENTER WITH SOLAR
- 12 ADMIN WITH EXHIBITS
- 13 GREEN HOUSE
- 14 ARBORS



OVERALL MASTER PLAN

MASTER PLAN PROJECTS AND PRIORITIES

Modifications are focused on place-making, improving way-finding, clarifying circulation and the addition of facilities to support visitor experience, farming, and education.

New Buildings

The new Welcome Center near the entry will serve visitors and be a place where groups can meet, picnic, start tours, and attend educational sessions and events. An ADA accessible restroom that can be used by farmers, recreationists, and tour groups is located in the northeast corner in close proximity to the parking. Integrated into the north side of the welcome center is a space to deliver food from the field, wash food, package, store in a cooler, and prepare outgoing food. The new Tunnel Hoop House is located north of dog park near the existing tunnel/hoop house. Near by, on either side of the new tunnel is additional at grade food production space is proposed.

New Food Production

- 1. New Tunnel Hoop House- Located north of dog park outside of the 50’ buffer from drainage.
- 2. New Garden Beds- Located east and west of new tunnel hoop house.

Site Improvements/ Enhancements

- 1. Retain, organize, and add structure to outdoor gathering places and enhance outdoor places.
- 2. Greens: Define lawn areas used for picnics, performances, or outdoor education.
 - Small lawn east of new pavilion will support larger events and performances with shade trees and improved landscaping with herbs, wildflowers and/or native plants.
 - Oval lawn with existing shade trees west of the main office is space for gathering large groups; keep circulation on edges of space.
 - Courtyard east of residence- potential to offer plants and produce for sale near entry.
- 3. Terraces
 - Enlarge entrance terrace at office to allow more space for displays and product sales.
 - Preserve terraces west and south of office that are currently used for picnicking and art display.
- 4. Rest areas and Orientation Spots
 - Benches - Resting spots along longer trails, entrance and terraces
 - Arbors - Several currently exist and this theme could be continued.
 - Orientation points - Adopt a consistent style for directing and informing visitors, perhaps incorporating QR Tour code onto colored Salmon fish.
- 5. Photo Opportunities - Photo opportunities should focus on authenticity. More thoughtful arrangement of equipment, tools, signs implements, and produce would provide authentic photo opportunities. Examples might include stacking of cisterns, hanging of tools, attractive and well-maintained fencing and arbors, display of food, flower and/or eggs in carts, wheel barrows and baskets, siting of art, and attractive and distinct signage. Buildings and art on the site could be nice photo backdrops.
- 6. Landscape - Add native landscape gardens at entries and adjacent to buildings to demonstrate how native plants can beautify places, and capture and reuse storm water.

MASTER PLAN PROJECTS AND PRIORITIES



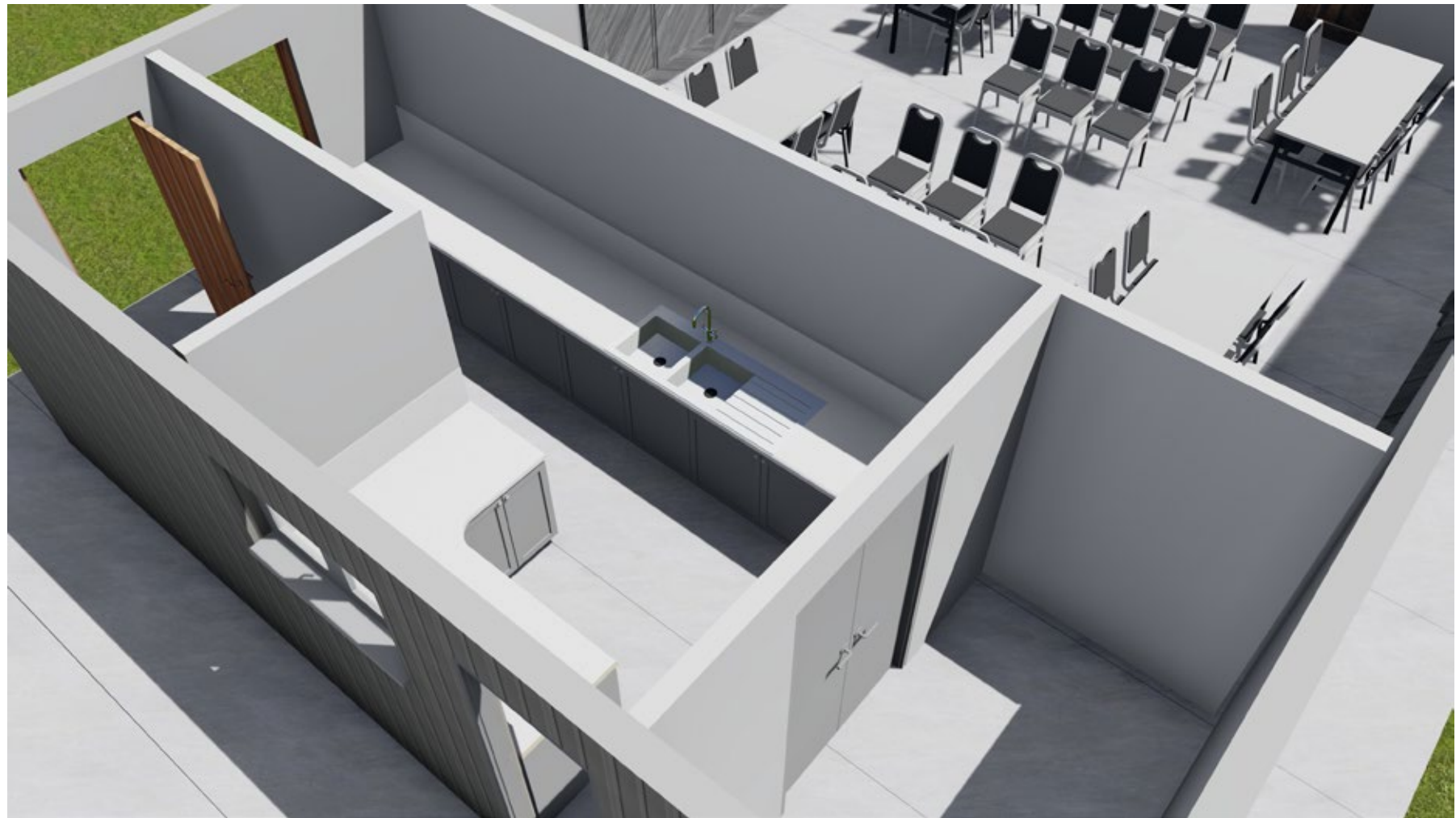
NEW PRODUCTION BEDS



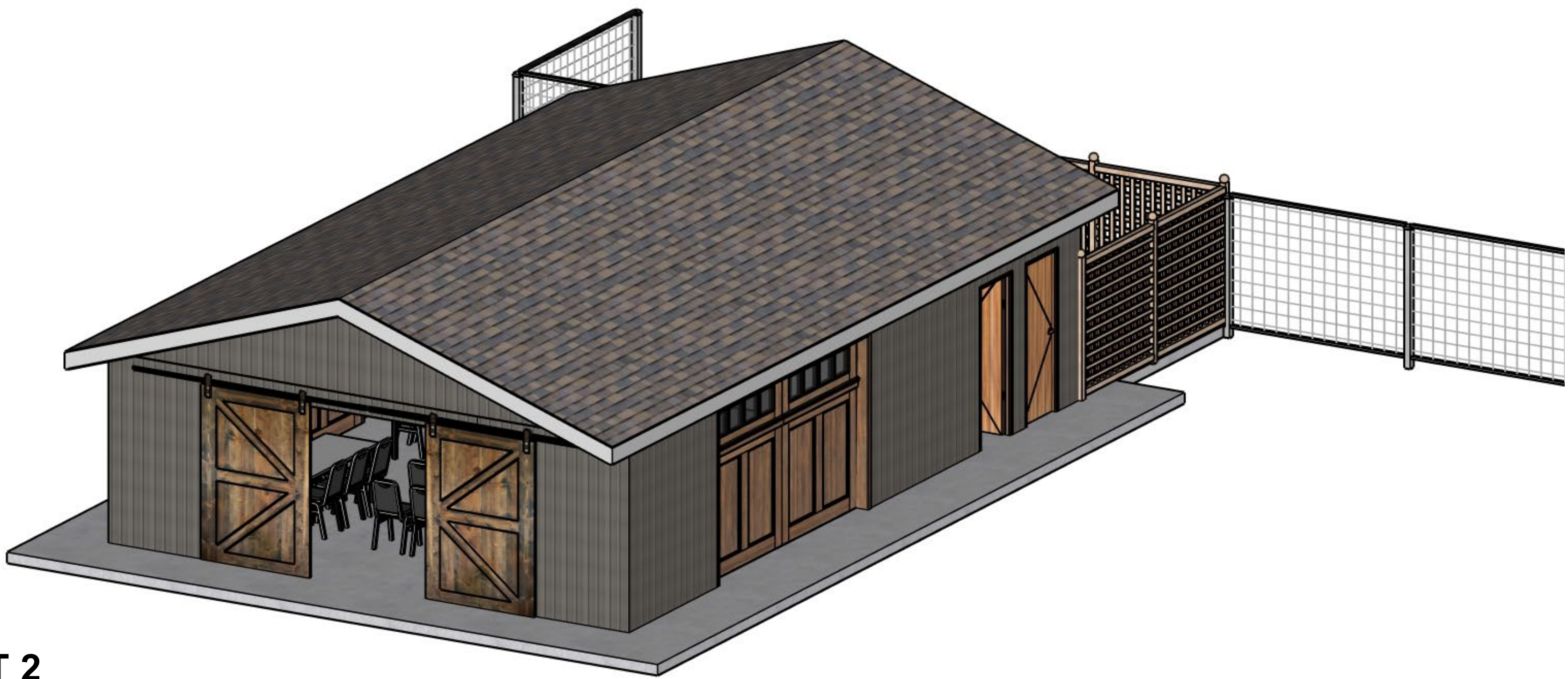
NEW TUNNEL



SPACE FOR WASHING ,STORING AND PACKAGING FOOD GROWN ON SITE



NEW WELCOME CENTER ALT. 1



NEW WELCOME CENTER ALT 2