

# The Presbyterian Church at Tenaflly



***For Every Heart a Home***

**June 7<sup>th</sup>, 2026 at 9:30am  
3<sup>rd</sup> Sunday of Pentecost**

## Sacrament of The Lord's Supper

Rev. Dr. Martin Ritchie

**Musicians: Will Farnham, Nik Rael, Pete McDonald, Fred Mawson**

**Yuna Kim, Clare Yoon, Anna Lee (instrumental scholars)**

**Ushers: Brian Coats-Thomas and Ron Rexroth**

**Communion Servers: James Oruado and Marilyn Coats-Thomas**

**Coffee Hour Host: Gillian Iappelli**

*Welcome to worship! If you are visiting or here for the first time and would like to stay in touch with us, please consider filling in one of the contact cards that you will find alongside the hymnals or you can use this QR code. These can be placed in the offering plate or handed to an usher. Church School for children happens during the 10:30am worship service. Ask one of the ushers for directions if you would like to take your child through to join in.*



*All are welcome at the Lord's table. You are welcome to take a piece of the sourdough loaf when it is passed around, or a piece of gluten free bread from the tray. Grape juice is offered in the glasses.*

### **Prelude**

**Welcome, Sharing the Peace and Announcements**

Rev. Dr. Martin Ritchie

### **Call to Worship**

**\*Song (Psalm 50)**    *The Mighty God with Power Speaks* (see pages 6 and 7)

**Reading**                      Mathew 9:9-13 and 18-26

As Jesus was walking along, he saw a man called Matthew sitting at the tax booth; and he said to him, 'Follow me.' And he got up and followed him. And as he sat at dinner in the house, many tax-collectors and sinners came and were sitting with him and his disciples. When the Pharisees saw this, they said to his disciples, 'Why does your teacher eat with tax-collectors and sinners?' But when he heard this, he said, 'Those who are well have no need of a physician, but those who are sick. Go and learn what this means, "I desire mercy, not sacrifice." For I have come to call not the righteous but sinners.'

While he was saying these things to them, suddenly a leader of the synagogue came in and knelt before him, saying, 'My daughter has just died; but come and lay your hand on her, and she will live.' And Jesus got up and followed him, with his disciples. Then suddenly a woman who had been suffering from haemorrhages for twelve years came up behind him and touched the fringe of his cloak, for she said to herself, 'If I only touch his cloak, I will be made well.' Jesus turned, and seeing her he said, 'Take heart, daughter; your faith has made you well.' And instantly the woman was made well. When Jesus came to the leader's house and saw the flute-players and the crowd making a commotion, he said, 'Go away; for the girl is not dead but sleeping.' And they laughed at him. But when the crowd had been put outside, he went in and took her by the hand, and the girl got up. And the report of this spread throughout that district.

## Reflection

Rev. Dr. Martin Ritchie

## Invitation to Communion

### \*Song

*We Are Coming, Lord, to the Table* (see pages 8-9)

## Telling the Story

## Sharing the Bread and Wine

## Post-Communion Prayer

### \*Song (Psalm 103)

*Praise God My Soul* (see page 10)

## Benediction and Celtic Amen

*Amen, Amen, Alleluia, Amen (x2)*

## Postlude

**\*Those who are able, please stand.**

*If you are visiting or would like to make an extra offering on top of your usual contribution to the church, you can use your smart phone to scan this QR code to make a donation by credit card (3% surcharge) or by debit card (no surcharge). Cash and check donations are always acceptable!*

GENERAL OFFERING



## Announcements

**NEXT SUNDAY – Youth Sunday**  
**Intergenerational Worship at 10:30am in the Sanctuary**  
Barbeque to follow 10:30am worship on Youth Sunday!

**Livestreaming of Worship.** Today's service is broadcast live online. You can watch the service again later via our website homepage if you wish to. Huge thanks to our entire technical team.

**Youth Sunday Barbeque.** Please sign up on the list in the Narthex or by the office to help us plan. Could you bring a side dish? Indicate on the signup sheet.

**Deacons' Strawberry Festival.** Follows worship on Music Sunday, June 21st

**Adventures in Faith.** Our study group meets this Wednesday at 12noon in the church house. Bring your lunch; drinks and treats provided.

**The Women's Group** will meet on Tuesday June 9 at 6pm at Circle Hummus located at 412 Madison Avenue in Dumont. We will have a set menu and the price is approximately \$30 each; meal will include salad, appetizers, numerous entrees to choose from, dessert, and a beverage. This restaurant is BYOB. **We need to give the restaurant a firm count so if you have not already indicated you are coming, please contact** either Marilyn Coats-Thomas at 201 888-0402 or Christina Chan at 917 887-0308 **asap**. Please bring cash. We hope you can come!

**PCAT Men's Dinner** – Save the Date for the next men's dinner Tuesday June 9<sup>th</sup> at 7pm. We are trying out Massa Pasta at 35 Washington St. Tenafly. There will be a plan B for bad weather as we will be sitting outside under umbrellas at this restaurant. All are welcome - contact Jim Crook or Pastor Martin to sign up.

**Sanctuary Space** is next up on June 11<sup>th</sup>, 7-9pm. Introduction to meditation from 7-7:30pm with Jenny Jackson Miller then free time by candlelight with music and quiet until 9pm. Experience the gentle power of sharing in this together.

**The Mission Committee** is holding a clothing drive from June 1 - June 25th again for *Greater Faith Works* of Paterson. Summer clothing in good condition, used/new for all ages is appreciated, with a special appeal for men's clothing. Please deliver your donations to the PCAT office Monday-Friday between 9-12 and 1-3 or leave it there on Sundays. The final deadline is Thursday, June 25th at 12 noon. Thank you for your kindness! Any questions? Please contact Mary Jane Eimer at mjeimer@aol.com or text her at (201) 914-7545. Mission Committee Co-Chairs *Mary Jane Eimer and Gillian Iappelli*

**AA Morning Glory Group** invites members of the congregation to enjoy their annual breakfast on Saturday June 27th from 9am in Jim Henry Hall. Speakers from 10:30am. Just turn up.

**Presby Readers** has selected Patrick Ryan's, *Buckeye* as our next read. We will meet to discuss the book on Sunday, July 26 at 4pm at Mary Jane Eimer's home. There will not be a meeting in June.

# 50A The Mighty God with Power Speaks

Em C D

1 The Might - y God with pow - er speaks, and  
 2 God comes, not with a si - lent form, but  
 3 The heavens de - clare your jus - tice, Lord, as

Em C D Em

all the world o - beys; from dawn un - til the  
 rid - ing on the winds; be - fore God's face, the  
 end - less as the sky; a - gainst the taunts of

G D Em C Em

set - ting sun, God's won - der earth dis - plays.  
 rag - ing storm its blast of thun - der sends.  
 dis - be - lief, our God will tes - ti - fy.

G D

The per - fect beau - ty all a - round from  
 All hail the Judge, in bold ar - ray, whose  
 Re - ceive my heart - felt gift of thanks as

The image shows a musical score for the hymn 'Star of County Down'. It consists of two systems of music. Each system has a vocal line (treble clef) and a bass line (bass clef). The key signature is one sharp (F#), indicating G major. The first system has four measures with chords Em, C, D, and Em. The second system has five measures with chords G, D, Em, C, and Em. The lyrics are written below the vocal line.

Chords: Em C D Em (System 1); G D Em C Em (System 2)

Lyrics:

Zi - on's height shines forth; and stars a - cross the  
 prom - ise is to bless; who sees our sins, yet  
 hon - or to your might; re - fresh my faith with

fir - ma - ment so bright - ly beam their worth.  
 al - so feels our thirst for right - eous - ness.  
 each new day; pro - tect me through the night.

Words: Michael Morgan © 1999, 2011 Michael Morgan, admin. Faith Alive Christian Resources  
 Music (STAR OF COUNTY DOWN 8.6.8.6 D): Irish traditional; arr. Rory Cooney (b. 1952) © 1990 GIA  
 Publications, Inc.

# We are coming, Lord, to the table

Words & Music: Sierra Leone traditional  
Transcription & Arrangement: Greg Scheer

Prayerfully ♩ = 100

We are co - ming, Lord, to the ta - ble.

4b

We are co - ming, Lord, to the ta - ble.

8b

1. With the gift of bread, we are com-ing, Lord.  
2. To re - ceive the bread, we are com-ing, Lord.

13b

Oh, sing it o - ver:

With the gift of wine, we are co-ming, Lord.  
To re-ceive the wine, we are co-ming, Lord.

1. We of - fer you the gift of  
2. We're co - ming to re - ceive the

19

Oh, we are com - ing, Lord.

Detailed description: This system contains measures 19 through 22. It features a grand staff with a treble clef and a bass clef. The key signature has two flats (B-flat and E-flat), and the time signature is 4/4. The melody in the treble clef starts with a whole note chord (F2, B-flat2, E-flat3) and then moves to a series of quarter notes: F2, B-flat2, E-flat3, F3. The bass line consists of a steady eighth-note accompaniment: F2, B-flat2, E-flat3, F3.

bread.  
bread.

We of - fer you the gift of  
We're co - ming to re - ceive the

23

Oh, we are com - ing, Lord.

Detailed description: This system contains measures 23 through 26. The musical notation is identical to the first system, with a grand staff in B-flat/E-flat major, 4/4 time. The melody in the treble clef starts with a whole note chord (F2, B-flat2, E-flat3) and then moves to a series of quarter notes: F2, B-flat2, E-flat3, F3. The bass line consists of a steady eighth-note accompaniment: F2, B-flat2, E-flat3, F3.

wine.  
wine.

Oh, sing it o - ver.

27

Oh, we are com - ing, Lord.

Detailed description: This system contains measures 27 through 30. The musical notation is identical to the previous systems, with a grand staff in B-flat/E-flat major, 4/4 time. The melody in the treble clef starts with a whole note chord (F2, B-flat2, E-flat3) and then moves to a series of quarter notes: F2, B-flat2, E-flat3, F3. The bass line consists of a steady eighth-note accompaniment: F2, B-flat2, E-flat3, F3.

31

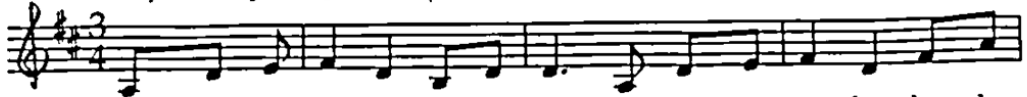
Oh, we are com - ing Lord.

Detailed description: This system contains measures 31 through 34. The musical notation is identical to the previous systems, with a grand staff in B-flat/E-flat major, 4/4 time. The melody in the treble clef starts with a whole note chord (F2, B-flat2, E-flat3) and then moves to a series of quarter notes: F2, B-flat2, E-flat3, F3. The bass line consists of a steady eighth-note accompaniment: F2, B-flat2, E-flat3, F3.

# Praise God my soul!

Vikki Cook

Majestically      D      G/D      D



1. Praise God, my soul! with all my heart let me ex - alt his ho - ly  
 2. The Lord is mer - ci - ful and kind, to an - ger, slow, and full of  
 3. But ev - er - last - ing is God's love for those who fear him, and their

4      F#m      D/F#      G      D/F#      A      Bm      Gb      Em7      G/A



name. For - get not all his be - ne - fits; his praise, my soul, in song pro -  
 grace. He will not constant - ly re prove, or in his an - ger hide his  
 seed, for those who keep his cov en - ant, and care - ful - ly his pre cepts

8      D      F#m      G      D/F#      D      A      D/F#      F#m7      G      D/F#      G      A



claim. He sa - tis - fies your deep de - sires from his un - end - ing stores of  
 face. Just as a fa - ther loves his child, so God loves those who fear his  
 heed. O praise the Lord, you heav'n - ly hosts, his ser - vants who per - form his

12      Bm      Bm/A      G      D/F#      A      Bm(add2)      Bm      Bm/A



good, so that, just like the ea - gle's strength, your youth - ful  
 name. For he re - mem - bers we are dust, and well he  
 word. Praise God, his works through - out the world, And you, my

15      Gb      Em7      G/A      Bm      Bm/A      G(add2)      Em7      G/A      D



vi - gor is re - newed. Your youth - ful vi - gor is re - newed.  
 knows our fee - ble frame. And well he knows our fee - ble frame.  
 soul, O praise the Lord! And you my soul, O praise the Lord!

### Regular Groups at PCAT

GROUP	WHEN	CONTACT
AA (Morning Glory)	Saturdays 10:30am JHH	Jay McSherry JayMcSherry@earthlink.net
Adventures in Faith	Wednesday 12pm Church House	Pastor Martin pastorpcat@gmail.com
Bell Choir	Tuesdays 4pm Room 203	Jim Millar Dirmusic@tenaflypresby.org
Choir	Sundays 9am	Jim Millar Dirmusic@tenaflypresby.org
Church School and Childcare	Sundays 10:30am	Sherrie Reilley reilleysherrie@gmail.com
Cro-Knitters	Tuesdays 2pm-4pm Lounge	Joan Roselle (201) 569-3819
English Second Language (ESL)	Tuesdays 10am-12pm Church House	Jun Motai Motaicoaching@gmail.com
Mommy/Daddy/and Me		Christina Chan Shanghai68@gmail.com
PresbyReaders	Meets monthly (Sundays at 4pm)	Mary Jane Eimer mjeimer@aol.com
Women's Group		Marilyn Coats-Thomas coathomas@aol.com or Christina Chan Shanghai68@gmail.com
Men's Group		Pastor Martin pastorpcat@gmail.com or Jim Crook rjamescrook@gmail.com

*Doodle away . . .*

**THE PRESBYTERIAN CHURCH AT TENAFLY**

**Rev. Dr. Martin Ritchie, M.A., B.D, PhD, Pastor**

55 Magnolia Avenue, Tenafly, NJ 07670

Phone (201) 567-0111 / Fax (201) 567-0529

Office Email: [office@tenaflypresby.org](mailto:office@tenaflypresby.org)

Pastor Martin's email: [pastorpcat@gmail.com](mailto:pastorpcat@gmail.com)

Pastor's Cell # (551) 755-0950

Sherrie Reilley, Dir. of Children, Youth and Family Ministry

Email: [Reilleysherrie@gmail.com](mailto:Reilleysherrie@gmail.com)

Jim Millar, Director of Music Email: [Dirmusic@tenaflypresby.org](mailto:Dirmusic@tenaflypresby.org)

Will Farnham, Associate Director of Music Email: [farnham.william@gmail.com](mailto:farnham.william@gmail.com)

Web page: [www.tenaflypresby.org](http://www.tenaflypresby.org)

Look for us on Facebook, Instagram, and X

