

FALSE CEILING SUSPENSION PROFILES

DRYWALL PARTITION PROFILES

METAL TECH INDUSTRIES WLL

Bldg 970. Block 952, Road 5218, Ras Zuwayed,
Post Box 10995, Kingdom of Bahrain

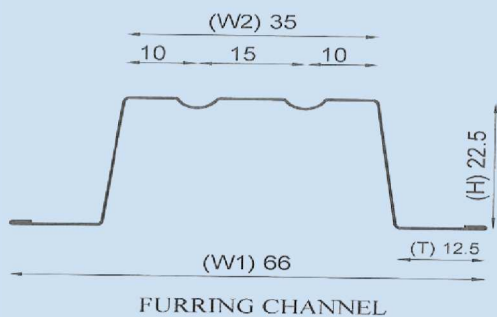
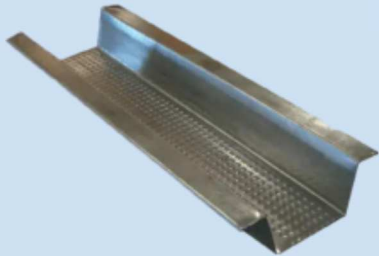
TEL: 77315555, FX: 77314444,

Cell /Whats App 32346666, 38766940, 39646453

sales@metaltechbahrain.com , www.metaltechbahrain.com

FALSE CEILING SUSPENSION PROFILES

FURRING CHANNEL



Specifications

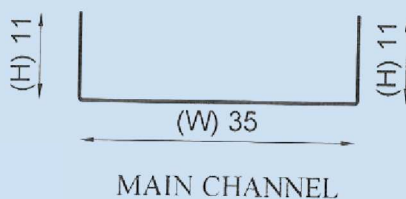
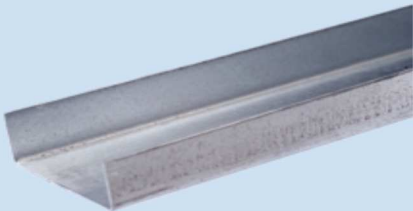
Material : Galvanized Iron Sheet

Zinc Coating : G60 –G90

ASTM Standard : ASTM 653

Thickness : 0.45mm– 0.60mm

MAIN CHANNEL



Specifications

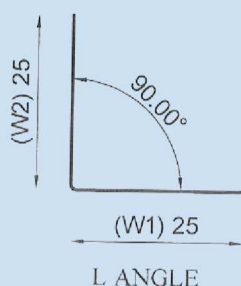
Material : Galvanized Iron Sheet

Zinc Coating : G60 –G90

ASTM Standard : ASTM 653

Thickness : 0.45mm– 0.60mm

L ANGLE



Specifications

Material : Galvanized Iron Sheet

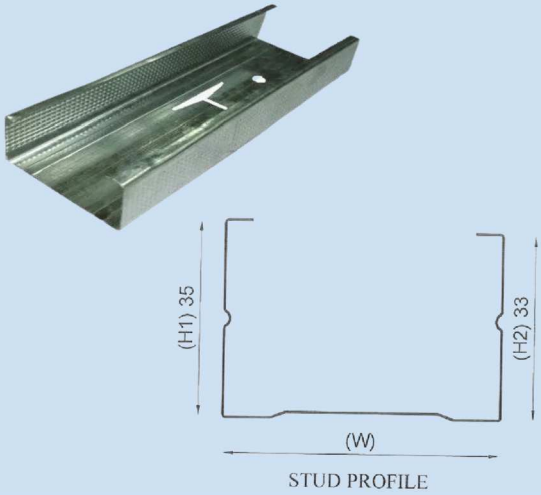
Zinc Coating : G60 –G90

ASTM Standard : ASTM 653

Thickness : 0.45mm– 0.60mm

DRYWALL PARTITION PROFILES

STUD



Specifications

Material : Galvanized Iron Sheet

Zinc Coating : G60 –G90

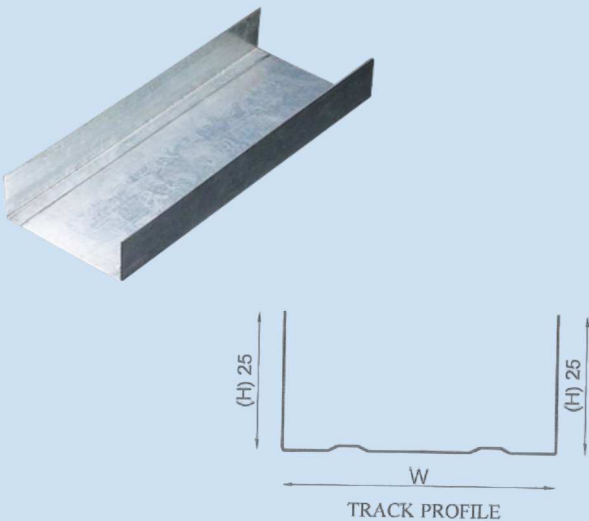
ASTM Standard : ASTM 653

Thickness : 0.45mm– 0.60mm

Dimensions (W)

48mm 68mm 73mm 100mm

RUNNER BASE (TRACK)



Specifications

Material : Galvanized Iron Sheet

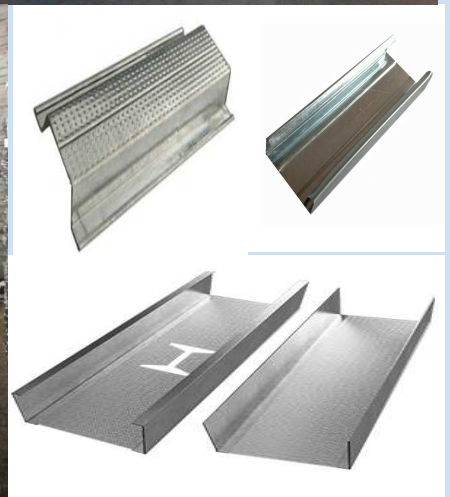
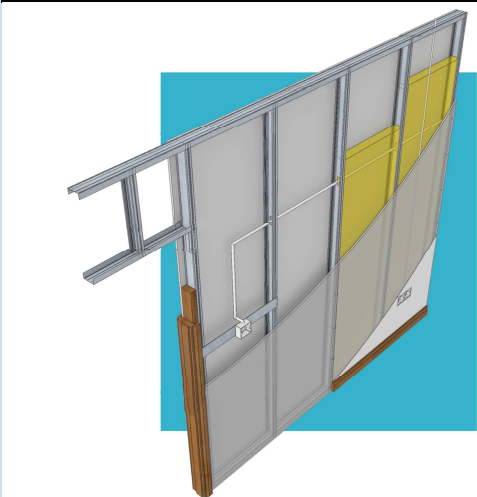
Zinc Coating : G60 –G90

ASTM Standard : ASTM 653

Thickness : 0.45mm– 0.60mm

Dimensions(W)

50mm 70mm 75mm 102mm



METAL TECH INDUSTRIES WLL

Bldg 970. Block 952, Road 5218, Ras Zuwayed,
Post Box 10995, Kingdom of Bahrain

TEL: 77315555, FX: 77314444,

Cell /Whats App 32346666, 38766940, 39646453

sales@metaltechbahrain.com , www.metaltechbahrain.com