

Winter  
2015  
Edition  
Jan 2015



**KB7ARA**  
*Kamiak Butte Amateur Repeater Association*

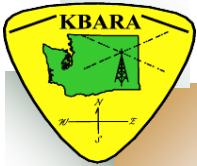
## Holiday Luncheon

Holiday cheer, and quite a few tasty barbecue ribs, were enjoyed by one and all once again at the annual Ham Radio holiday luncheon, held at the Longhorn Barbecue Restaurant in the Spokane Valley on December 20. This was the 14<sup>th</sup> annual gathering held at this popular local restaurant, and was attended by members from KBARA, the IEVHF Club, NW Tri-States ARO, Spokane DX Assn, and the KARS. It was a fun gathering of about 65 hungry, talkative Hams, and a good way to celebrate the holidays with good food & camaraderie.

---

I hope everyone received everything they wanted from Santa and are having a great start to 2015.





## A few words from our President



Greetings KBARA Members;

Happy New Year! I wish you a happy and successful 2015. KBARA in 2015 will continue to be on the cutting edge of providing the latest technology and communications systems for Spokane, the Inland Empire and the Northwest including our Canadian neighbors. KBARA IRLP nodes and Echolink connect us with the World.

This past year there were several highlights including a new repeater at Elk Butte near Elk River, Idaho. Thanks to Glen, K1RR and Bob, KF7WRO. Several large donations to the club were made by Ken, KD7DDQ and Dennis, KF7UTH your gifts are appreciated. The annual meeting at Rotary Park in Oldtown, Idaho was very successful and will again host the KBARA 2015 annual meeting next summer. Several officers and John, KD7AAT manned the KBARA table at the Mike and Key Swap Meet in Puyallup in March, promoting KBARA by providing information, selling memberships and Spokane Ham fest raffle tickets.

I would like to thank the Net Hosts who operate the daily nets and the Wednesday business net for their dedication and time. (Mike, Craig, Dennis, Jim, Jeff, Joe and Duff). Recognition to appointed officials and officers for keeping the club operating efficiently, your efforts are appreciated especially Scott, KA7FVV for work on newsletters and seminars that he has presented at Northwest Hamfests. Glen, K1RR for his efforts in establishing the repeater at Elk Butte and always providing a helping hand to other Hams. Thanks a lot to Betsy for her efforts in keeping the club on the straight and narrow not only with the KBARA but as the chair of the Spokane Hamfest.

The Christmas Party on December 20<sup>th</sup> at the Longhorn BBQ was a great success and provided an opportunity to visit with other hams from clubs in the area. 64 people attended the event. There were lots of positive comments about the party by the Hams that attended.

There are several Ham events coming up. Mike and Key Swap Meeting in March and the Hamfest at Yakima in April.

Congratulations to Bob, KF7W0R, Bob, KL2JY, Deann, KL2MA and Joe, W1TYV for the nice article about Field Day 2014 on Elk Butte that was on Page 20, November 2014 issue of QST.

Thank you owners for your investment in equipment and providing hard work that keeps KBARA on the air.

KBARA welcomes all new hams and others who would like to join this great organization or use the system.

73

Roger Krug,  
KF7JJC,  
President KBARA



# Up Coming Hamfests



**February 14. Salem Hamfair & Computer/Electronics Swapmeet.** *This is an ARRL sanctioned event.* Rickreall, Oregon at the Polk County Fairgrounds. <http://www.w7sra.com> .

**February 22. Burnaby ARC Swapmeet,** New Westminster, BC. [http://rac.eton.ca/events/detail.php?event\\_ID=1714](http://rac.eton.ca/events/detail.php?event_ID=1714)

**March 7. Mike & Key Swap Meet.** Puyallup fairgrounds exhibition hall, Puyallup, WA. *This is an ARRL sanctioned event.* <http://www.mikeandkey.org/flea.htm> [Flyer in PDF](#) (62K())

**March 21. MicroHams Digital Conference.** Redmond, WA. *This is an ARRL sanctioned event.* <http://www.microhams.com> .

**April. Idaho State Convention.** Boise, ID, Voice of Idaho ARC. Info, Don Lynn , ND7L, (208)899-5801, [don\\_lynn@pacbell.net](mailto:don_lynn@pacbell.net) . <http://www.idahostateconvention.com/>

**April 11. Yakima Hamfest. Yakima, Washington.** Selah Civic Center, 216 South 1st Street, Selah, WA. <http://yakimaamateurradioclub.com/yakima-hamfest/>

**April 11 & 12. Communications Academy.** Seattle, WA. *This is an ARRL sanctioned event.* <http://www.commacademy.org>

**May 1-3. Nevada State Convention.** Reno, Nevada. <http://nvcon.org/>

**May 3. Maple Ridge Swapmeet.** Pitt Meadows BC. [http://rac.eton.ca/events/detail.php?event\\_ID=1712](http://rac.eton.ca/events/detail.php?event_ID=1712)

**May 9. Stanwood Camano Amateur Radio Club Hamfest,** Stanwood Middle School, Stanwood, WA. Contact Vic, N7KRE (360)387-7705) [nwecop@tqi.net](mailto:nwecop@tqi.net) . <http://www.scarcwa.org/>

**May 15-17. Washington State Search And Rescue Conference.** Carnation, WA. <http://www.wasarcon.org/>

**May 22-24. Pateros 16th Annual Ham Radio, Campout/Potluck.** Pateros WA. Free "dry" camping along the Methow River at Pateros. Always the weekend prior to Memorial Day Weekend - except this year! Contact Roger W7CH [w7ch@arrl.net](mailto:w7ch@arrl.net) (509)687-3919. <http://lakechelanradioclub.webs.com/>

**June. Port Ludlow ARC Annual TailGate'r.** Port Ludlow, WA. <http://www.n7pl.org/>

**June. 47th Annual Wenatchee Hamfest.** Apple City ARC. Dryden Gun Club. Dryden, WA. <http://www.qsl.net/w7td/> .

**June 5-7. Sea-Pac Hamfest and ARRL Northwestern Division Conference.** Seaside Convention Center, Seaside, Oregon. *This is an ARRL sanctioned event.* [SEAPAC@seapac.org](mailto:SEAPAC@seapac.org) . [www.seapac.org/](http://www.seapac.org/) .

List courtesy of the [www.n7cfo.com](http://www.n7cfo.com) website





# ANNOUNCING THE 34th ANNUAL MIKE AND KEY ARC ELECTRONICS SHOW & FLEAMARKET



**MARCH 7, 2015 @ 9AM  
PAVILION EXHIBITION HALL**



**WASHINGTON STATE FAIR GROUNDS**

110 9th Avenue SW, Puyallup, WA 98371

**ADMISSION - \$8 (UNDER 16, FREE w/ADULT)**

**TWO FLOORS WITH 44,000 Sq FEET OF EXHIBITION AREA (>300 tables)**

**TALKIN 146.82/22 (PL 103.5)**

**RADIO GEAR \* COMPUTERS \* CLUB & INFO TABLES \* PARTS**

**SNACK BAR \* FREE PARKING \* CONSIGNMENT AREA**

**OVERNIGHT SC/RV Camping Available \* LICENSE EXAMS**

Table Reservation Information: (253) 631-3756, [dmdink@clearwire.net](mailto:dmdink@clearwire.net) or [n7wa@arrl.net](mailto:n7wa@arrl.net)  
VE Exam Information: (425) 788 0452, [ag7t@arrl.net](mailto:ag7t@arrl.net)

cut \_\_\_\_\_ cut \_\_\_\_\_ cut \_\_\_\_\_  
CONTACT NAME: \_\_\_\_\_ CALL: \_\_\_\_\_ BUSINESS NAME (IF ANY): \_\_\_\_\_  
ADDRESS: \_\_\_\_\_  
CITY: \_\_\_\_\_ STATE: \_\_\_\_\_ ZIP: \_\_\_\_\_  
TELEPHONE: ( ) \_\_\_\_\_ E-MAIL: \_\_\_\_\_

#### REGISTRATION TIPS

REGISTER EARLY AS TABLES ARE ASSIGNED ON A FIRST COME, FIRST SERVE BASIS AS DETERMINED BY POSTMARK. SPECIFIC LOCATION REQUESTS ARE HONORED ONLY IF THE SPACE IS AVAILABLE. BE FLEXIBLE AND GET GROUP REQUESTS IN EARLY.

EXAMPLE ORDERS: 1 TABLE & 1 SELLER = \$32  
1 TABLE & 1 SELLER & 1 HELPER = \$41  
1 TABLE & 1 SELLER & 2 HELPERS = \$60  
2 TABLES & 2 SELLER = \$64  
1 BOOTH & 2 SELLERS \$128

Please note any location/group requests, special requirements, or additional information below:

QTY	DESCRIPTION	\$
	COMMERCIAL BOOTHS @ \$112 EACH SELLER/HELPER ADMISSIONS (NOT INCLUDED) (200 SQ FEET, 4 8'X30" TABLES, INCLUDED)	
	SELLER TABLES 8'X30" @ \$25 EACH SELLER/HELPER ADMISSIONS (NOT INCLUDED) (INCLUDES ACCESS TO ELECTRICITY)	
	SELLER REGISTRATIONS @ \$7 EACH (LIMIT OF ONE (1) PER TABLE PURCHASED)	
	TABLE HELPER REGISTRATIONS @ \$9 EACH (LIMIT OF TWO (2) PER TABLE PURCHASED) (LIMIT ONE (1) PER INFO TABLE)	
	DAY OF EVENT ADMISSIONS @ \$8 (HONORED @ 9AM, March 6th-SENT BY RETURN MAIL- NO ORDERS AFTER 02/20/15)	
	TOTAL ENCLOSED =	

(WALK-IN ONLY) Prefer to pickup Registration packet at  
Gold Gate NE corner of the Fairgrounds? Check Here ( )

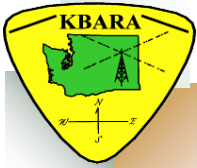
#### SELLER SETUP TIMES

MARCH 6 (FRIDAY) - 2PM TO 7:30PM  
MARCH 7 (SATURDAY) - 5:30AM TO 8:30AM

MAKE CHECKS PAYABLE TO: MIKE & KEY ARC MAIL FORM AND PAYMENT TO DIANE DINKELMAN 22222 148TH AVE SE, KENT, WA 98042

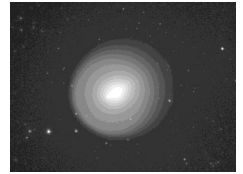
ALL RESERVATIONS CONFIRMED BY RETURN MAIL (NO RESERVATIONS TAKEN OR CONFIRMED BY E-MAIL)

INFORMATION TABLE REGISTRATION PACKETS WILL BE AT THE WALK-IN GOLD GATE UNLESS OTHERWISE REQUESTED. CHECK FOR DRIVE-IN: ( )

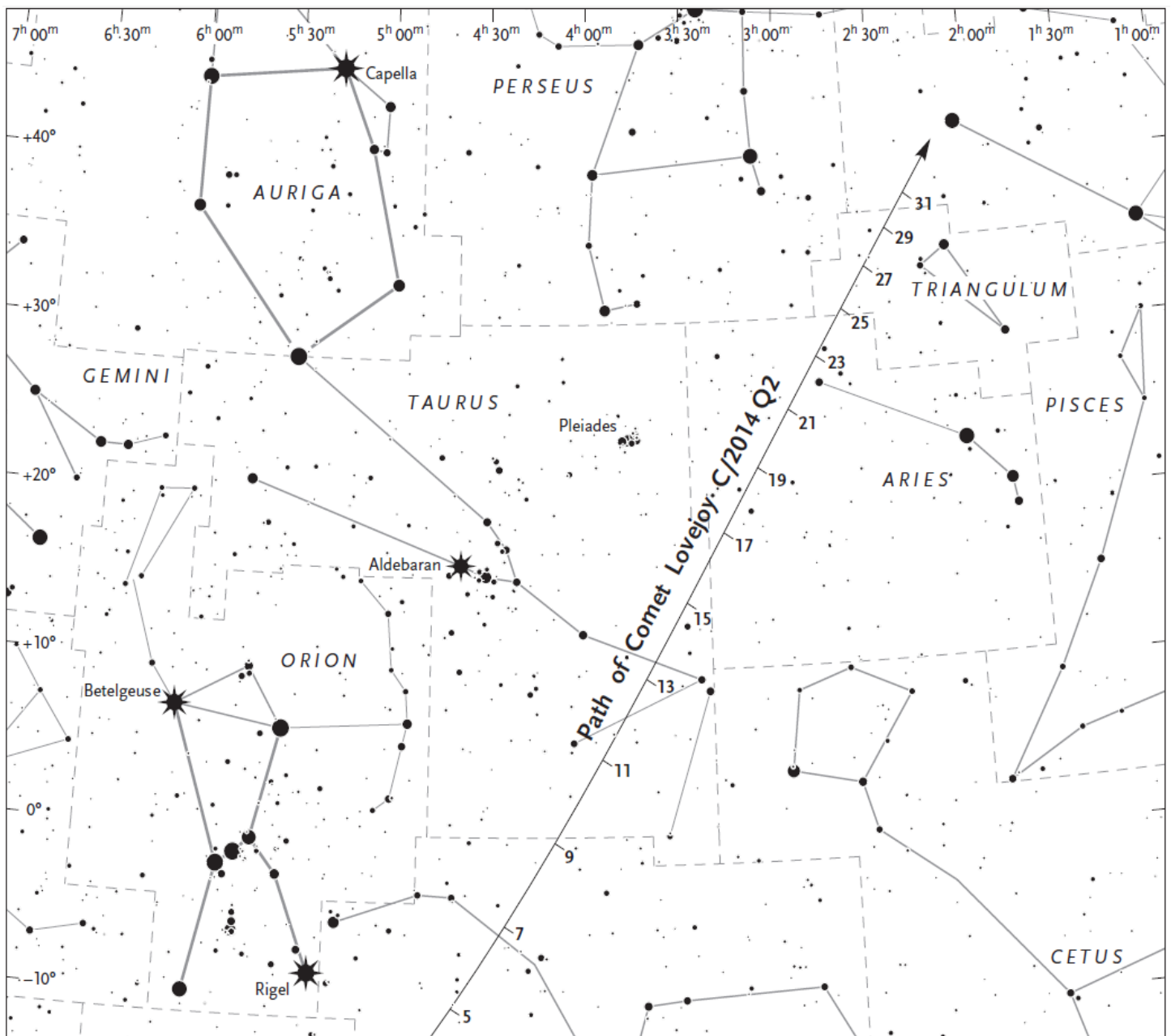


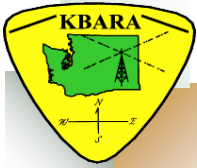
# Comet Lovejoy

by Scott, KA7FVV



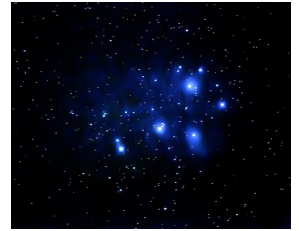
As some of you know amateur radio is not my only hobby. Astronomy is a second hobby I dabble in. This month we have a comet that is easily visible with binoculars and if you are lucky enough to live outside of town and have a dark sky possibly viewable to the naked eye as well. The comet is approaching 4th magnitude. I was able to spot it with binoculars on the night of January 14th. Take a look at this star chart to be able to find it the next clear night we have. It will appear as a fuzzy ball.



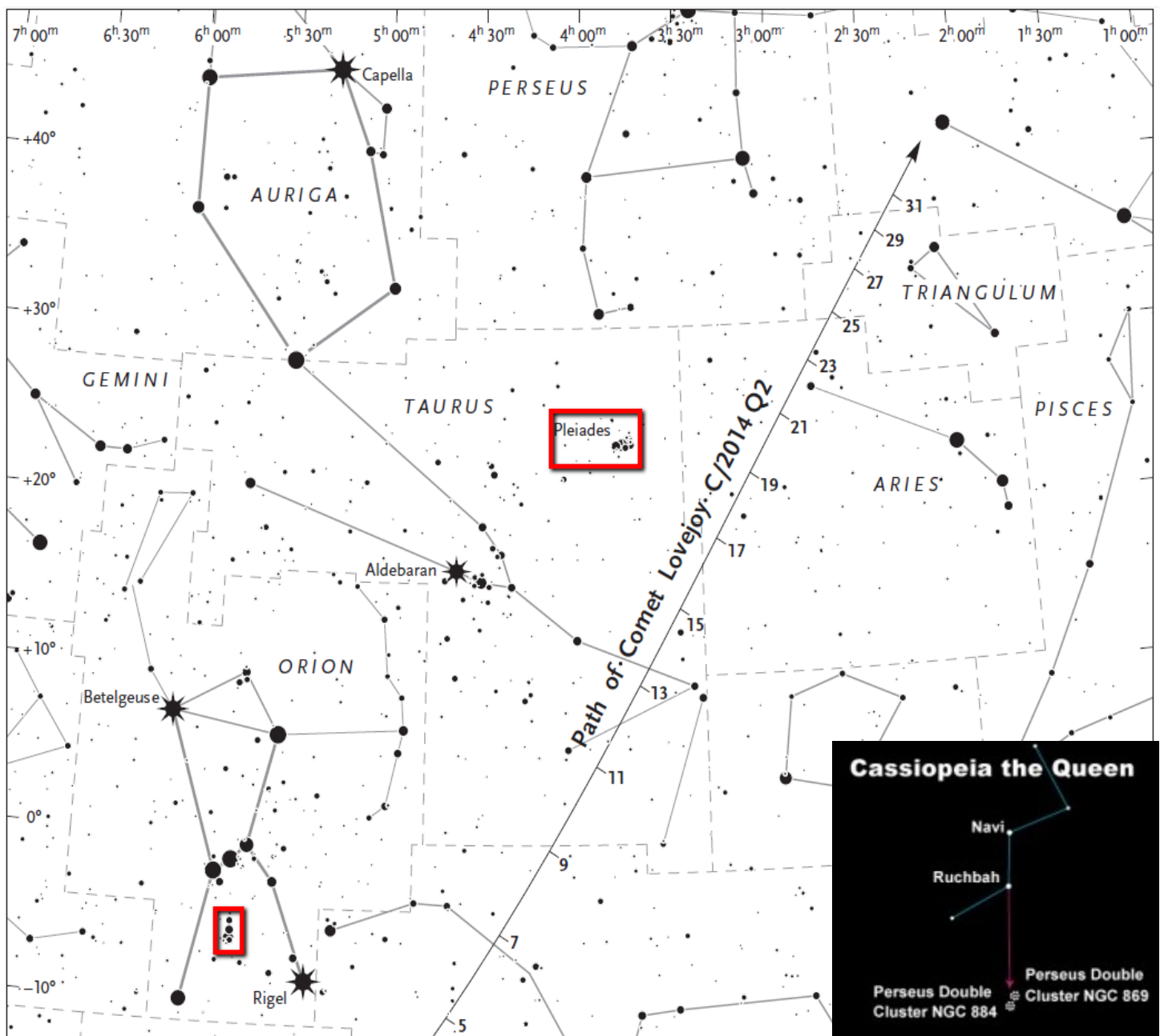


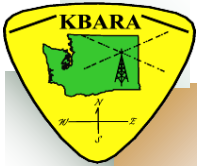
# Observing the winter sky

by Scott, KA7FVV



While you are looking for Comet Lovejoy you might take a look some of the other sites that the winter sky has to offer. During January Jupiter shines bright in the eastern sky. With binoculars and a telescope you can see the four brightest moons. Also check out the five sisters also know as Pleiades and the Orion Nebula in the middle of the line of stars below the belt of Orion. Also visible with binoculars is the double star cluster in Perseus. Be sure and bundle up, it's cold out there.





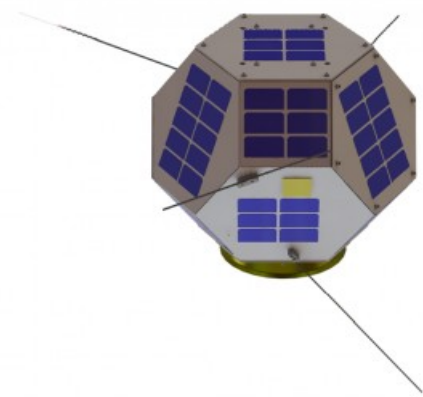
# Amateur Satellites take a historic leap

by Scott, KA7FVV

In December amateur radio took a historic leap by launching satellites into deep space. On a Japanese Space Agency (JAXA) launch vehicle carrying the primary payload of Hayabusa 2, an asteroid sample-return mission there were two amateur radio satellites on board. Shin'en 2 (Abyss 2) and ARTSAT2: DESPATCH. Shin'en 2 carries a 0.1 watt CW beacon transmitting on 437.505 Mhz and telemetry on 437.385 Mhz. Artsat2 carries a 7 watt CW beacon on 437.325 mhz and has an on board sculpture. The first ever to be taken into deep space.

The two satellites will be in an elliptical orbit around the sun and be in an orbit between Venus and Mars at a distance from the sun of 6.5 to 12 million miles.

For more details and links to the specific satellite pages please check out this ARRL link. <http://www.arrl.org/news/view/japanese-satellites-carrying-amateur-radio-payloads-are-launched-into-deep-space>



Shin'en 2



ARTSAT2: DESPATCH

## Spinsat deployed from ISS in November

Developed by the Naval Research Laboratory, Spinsat is a 56 cm sphere. Spinsat Has no solar panels. Satellite life is projected to be from three to six months. The Satellite has a 2 watt 9600 bps AX.25 packet radio store and forward system on 437.230 Mhz. Spinsat is approximately 15 minutes ahead of ISS in it's orbit.

More information can be found here: <http://amsat-uk.org/tag/spinsat/>





# Amateur Radio Testing Sessions

---

## **Chewelah, WA, ARRL VEC**

February 7, 2015; March 1, 2015; April 4, 2015; May 2, 2015; June 6, 2015; 12PM; Abundant Life Church (Basement) E 2nd & Clay St, Chewelah WA 99109-9660

Contact: Karl Miller, WX7DX: (509)258-8922 email: wx7dx@arri.net

## **Colville, WA, ARRL VEC**

Contact: Tommy L Howe, (509)-684-5565, email thowe@hotmail.com

## **Hayden, ID, ARRL VEC**

Second Monday of every month starting at 5:30PM at the Kootenai County Search & Rescue Building, 10865 N. Ramsey, Hayden, ID 83835.near the South end of CDA Airport

Contact: Mitch, KB7BYR, (208)-786-5810, email vetesting@k7id.org

## **College Place, WA, ARRL VEC**

February 15, 2015; May 17, 2015; August 16, 2015; November 15, 2015; 2PM; Walla Walla University, 100 SW 4th St 1st Door Bldg., Chan Shun Pavilion

Lecture Hall Rm 154, College Place WA 99324-1238

Contact: Mable E. Babbitt, WB5AVH, (509) 629-2060 Email: wb5avh@msn.com

## **Kennewick, WA, ARRL VEC**

March 15, 2015; May 17, 2015; July 19, 2015; September 20, 2015; November 15, 2015; 2PM; Boy Scout Office, 8478 W Gage Blvd, Kennewick WA 99336-1075

Contact: Michael Tesky, KC7CCK (509)783-6236; email: kc7cck@frontier.com

## **Moscow, ID, ARRL VEC**

January 28, 2015; February 25, 2015; March 25, 2015; 6:15PM; American Legion Cabin, 317 S Howard, Moscow ID 83844

Contact: Tom Storer, KI6DER, (509)334-6979; email: KI6DER@AmSat.org

## **Spokane, WA, ARRL VEC**

Contact: Mary Qualtieri, AA7RT, (509) 991-2192; email: aa7rt@me.com

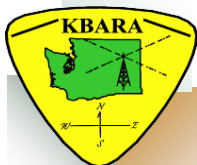
## **Spokane, WA, W5YI VEC**

February 17, 2015; April 21, 2015; June 16, 2015; August 18, 2015; October 20, 2015; December 15, 2015; 7PM, Tuesday; 2nd Look Books, 2829 E 29<sup>th</sup> Ave Ste C, Spokane WA 99223, 509-535-6464 (at 29<sup>th</sup> Ave & Regal in Lincoln Heights Shopping Center)

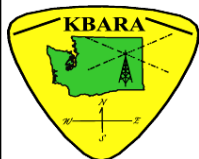
Contact: Betsy Ashleman, (509)448-5821 email: n7wrq@aol.com

Please bring two pieces of identification, one having a photo, radio license, if any, plus a photocopy, & any outstanding Certificates of Completion, plus a photocopy, & Social Security number or FCC Registration Number (FRN), and cash or check made out to the "ARRL" (\$15) or "W5YI" (\$14). If you pass a lower class license, you may sit for the next highest class on the same exam fee. You may retake any failed exam for an additional fee at the same testing session

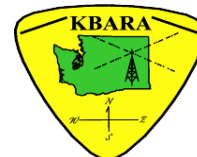




**Please remember to renew your membership for this year.**



## 2015 Membership Dues



Name: \_\_\_\_\_

Call Sign: \_\_\_\_\_

Address: \_\_\_\_\_

City/State: \_\_\_\_\_ Zip: \_\_\_\_\_

Telephone: \_\_\_\_\_ Amount Paid: \_\_\_\_\_

E-Mail: \_\_\_\_\_ ARRL Member #: \_\_\_\_\_

Would you rather receive the newsletter via computer, instead of receiving it in the mail? \_\_\_\_YES \_\_\_\_NO

Dues are a minimum of \$15.00 per year for individuals and \$20.00 for a family (all must be living at the same address). Dues are due January of each year. If they are paid between September 1 - December 31, they will be applied through the entire following year. And any additional amount going toward the Repeater Fund will be graciously accepted. To support **KBARA**, please send your contributions to:

**KBARA, PO Box 30801, Spokane WA 99223-3013**

Please visit our **KBARA** website for more information: <http://www.kbara.org>



**via our web page. No check or stamp needed.**

The next meeting will be on Tuesday, February 24, 2015 at 1700 hours at  
**Zip's Restaurant**

Corner of Trent and Fancher  
Spokane Valley, WA

# 2015

# Hamfest Meetings

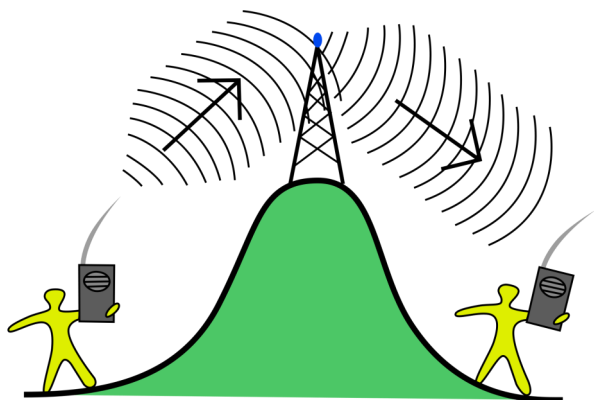


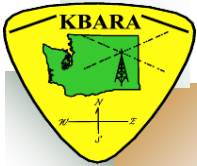


# KBARA Repeater and Echolink/IRLP

For more detailed information please see our web page at [www.kbara.org](http://www.kbara.org)

Frequency	CTCSS Tone	Location	Callsign	RF Link
<b>Repeaters</b>				
146.74 mhz	None	Kamiak Butte	W7HFI	AK2O—223.90
223.90 mhz	None	Stensgar Mtn	AK2O	Hub
147.38 mhz	None	Mica Peak	W7OE	AK2O—223.90
147.36 mhz	None	Stensgar Mtn	AF7JB	Hard wired Hub
147.02 mhz	None	Lookout Pass	K7HPT	W7OE—147.38
147.28 mhz	None	Pikes Peak	KD7DDQ	AK2O—223.90
53.75 mhz	100.0 hz	Kamiak Butte	N7ZUF	Linked
<b>Links</b>				
Echolink KB7ARA-R	N/A	Spokane, WA	K1RR	AK2O - 223.90
IRLP Node 3636	None	East Tiger Mt	KB7ARA	145.33 & Ref 9075
IRLP Node 3638	None	Spokane, WA	K1RR	AK2O—223.90 & Ref 9075
147.400 Simplex IRLP Node 3282	100.0 hz	NW Spokane, WA	K1RR	IRLP Only





**KBARA Membership / Support Information:** The KBARA repeater system consists of several privately owned linked Amateur Radio repeaters. It covers an area from northeastern Washington to northeastern Oregon, and from western Montana to central Washington. The KBARA system is also part of the Evergreen Intertie, an interconnected group of repeaters located in western Washington and Oregon. The primary purpose of the KBARA repeaters is to provide a means for emergency communications within the above areas, and secondarily for routine radio traffic. It makes possible a single system of mobile communications coverage, extending the limited range provided by any single repeater operation. The KBARA FM repeaters operate in the VHF bands and are linked by UHF radios. All licensed Amateur Radio operators are welcome to use this open repeater system. Your support would also be greatly appreciated. Please visit this sites for more information:

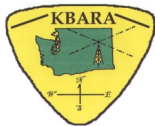
<http://www.kbara.org> and visit <http://groups.yahoo.com/group/evergreenintertie>



**Follow us on Facebook**



To support KBARA, please send your contributions to:



**KBARA**  
**PO Box 30801**  
**Spokane WA 99223-3013**

Annual support is \$15 per calendar year for a single membership and \$20 for a family membership. Dues are due in January of each year and if paid between September 1 and December 31, they will be applied through the entire following year. Also, any contribution will be gladly accepted to the Repeater Fund. This can also be done via Paypal on our webpage at [www.kbara.org](http://www.kbara.org).

**KAMIAK BUTTE AMATEUR REPEATER ASSOCIATION**

**PO Box 30801**

**Spokane WA 99223-3013**