

ANCHOR TABS NORTHWEST

www.ANCHORTABS.com



ANCHOR TAB

U.S. Patent No: 9,180,323

User Instructions (revised 06/2021)

Read This Instruction Manual Carefully Before Using This Equipment

User Instructions must always be available to the user and are not to be removed except by the user of this equipment.

For proper use, see supervisor, User Instructions, or contact the manufacturer.

National standards, and state, provincial and federal laws, require the installer/user of this product be trained before installation and/or use. Use this manual as part of an installer/user safety training program. These instructions must be provided to the installer/user before installation or use and must be retained for ready reference by the installer/user. The purchaser and installer/user must read, understand (or have explained to him/her), and heed all labels, markings and warnings supplied with this product and all products to be used in conjunction with this product. All users of this equipment must understand the instructions, operation, limitations and consequences of improper use of this equipment and be properly trained prior to use per OSHA 29 CFR 1910.66 and 1926.503 or applicable local standards. Compliant fall protection and emergency rescue systems help prevent serious injury during fall arrest. ***Misuse or failure to follow warnings and instructions may result in serious personal injury or death.***

1.0 SPECIFICATIONS

- **STANDARDS:** ANCHOR TAB meets federal OSHA requirements and Exceeds ANSI Standards. These instructions and the markings borne by the product fulfill those regulations and standards.
- **MATERIAL:** ANCHOR TAB is made of 4140 steel, forged and heat treated with a zinc chromate finish, and meets the 48 hour salt spray test requirement.
- **CAPACITY:** ANCHOR TAB capacity is one (1) person with a combined weight not to exceed 310 lbs. (140 kg) including weight of the user + clothing + other user borne objects.
- **FREE FALL:** ANCHOR TAB free-fall distance must not exceed six feet (6.0 ft. or 1.8 m) in accordance with OSHA.
- **FALL ARREST:** ANCHOR TAB, when used as part of a Single User Fall Arrest Attachment System, fall arresting forces must not exceed 1800 lbs. (8 kN).
- **DIMENSIONS:** ANCHOR TAB dimensions are: Length (overall) 7.5 in., Width 2.25 in., Thickness 0.187 in., Weight 0.66 lbs.

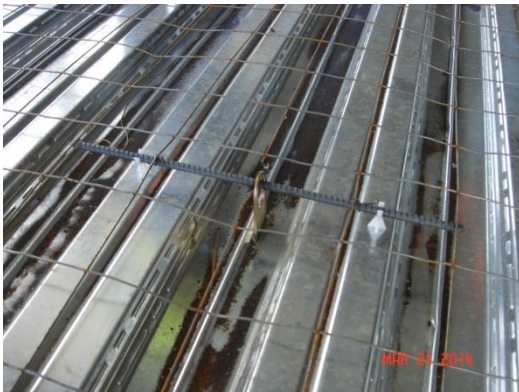


ANCHOR TAB

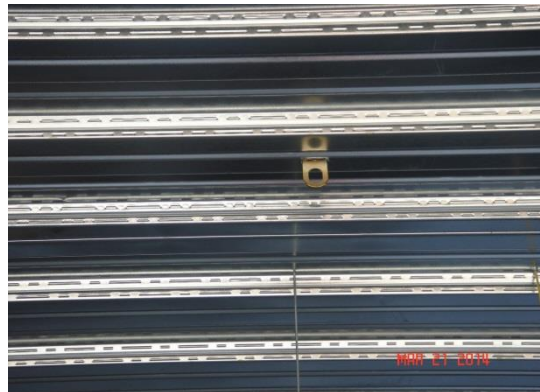
2.0 DESCRIPTION

ANCHOR TAB is a steel anchorage for use as a temporary/permanent anchorage point for a Single User Fall Arrest Attachment system in composite metal/concrete decks. ANCHOR TAB is installed through a formed slot in the metal form deck and secured to the structural elements of the deck with an ancillary 24 in. piece of #4/60 grade reinforcing bar (re-bar) and then encased in the concrete deck. Either end of ANCHOR TAB can be placed up or down, and its connecting element – a 1.25 in. by 1.75 in. oblong, projecting below the deck – is for attachment with a compatible Locking Carabiner or Locking Gated Snap Hook, which can then be connected to a Self-Retracting Lifeline (SRL) or other decelerating device.

ANCHOR TAB Above W1.5 or W2 Deck



ANCHOR TAB Below W1.5 or W2 Deck



Proper Installation of ANCHOR TAB in mesh Reinforced Deck prior to Concrete Placement

3.0 SELECTION and APPLICATION

- 3.1 PURPOSE: ANCHOR TAB is a means to attach/secure a compatible Single User Fall Arrest Attachment System to Structural Components of a Composite Metal/Concrete Deck and position the connection at the highest point possible above the User.
- 3.2 USAGE/LIMITATIONS: ANCHOR TAB should be used only with OSHA/ANSI approved Fall Arrest Systems/Components. The following application limitations must be considered and planned for:
- 3.2.1 PROPER ANCHORAGE: The structure must support the required loads.
 - 3.2.2 WORK PRACTICE: The User must not work above the anchor point and must limit potential free fall distance to less than six feet (6.0 ft. or 1.8 m). The connecting subsystem of one worker should never cross or tangle with another worker's subsystem, and should never be knotted or tied together with another subsystem.
 - 3.2.3 ANCHOR POINT LOCATION: The ANCHOR TAB anchorage connector can be loaded in any direction. However as a Single User Anchorage the User must be under the anchor point no more than 30 degrees offset in either direction from the vertical centerline of the anchor point to limit swing in case of a fall event.

NOTE: The 30 degree offset does not apply when using ANCHOR TAB as end anchorage for an approved Horizontal Lifeline system requiring 5000 lb. end anchorage. Check Horizontal Lifeline manufacturer's instructions for additional criteria regarding anchorage and additional User requirements.
 - 3.2.4 SHARP EDGES AND SURFACES: Do not expose Users/Workers or personal protective equipment to sharp or abrasive edges or surfaces. Pad or protect as required.
 - 3.2.5 ELECTRICAL HAZARDS: Use extreme caution around electrical components. Metal ANCHOR TAB and other components will conduct electricity and workers should maintain a ten feet (10 ft. or 3 m) safe working distance from electrical hazards.
 - 3.2.6 MOVING MACHINERY: Maintain a safe working distance from machinery which may entangle clothing or personal fall arrest system components.
 - 3.2.7 WEAR and DETERIORATION: Any ANCHOR TAB that shows any sign of wear or deterioration should be removed from service and destroyed. See Section 6: INSPECTION CRITERIA.
 - 3.2.8 IMPACT FORCES: Any ANCHOR TAB exposed to the forces of an arresting fall must be removed from service by cutting off the connection from the body of the ANCHOR TAB.
- 3.3 RESCUE AND EVACUATION: A means must be in place to rescue and evacuate workers in the event that a fall might occur. Have a rescue plan in place and a means to implement it.
- 3.4 TRAINING: It is the responsibility of the purchaser of ANCHOR TAB to provide training. Users must be familiar with these User Instructions and trained in the correct selection, inspection, use and care of this product, its limitations of application, and the consequences of improper usage. Training must not expose the trainee to fall hazards. Fall protection training should be reviewed and/or repeated on an annual basis.

4.0 USAGE and INSTALLATION

ANCHOR TAB is an under deck, Single User Fall Arrest Attachment point and as such should never be adapted or used for other purposes.

- 4.1 INSPECTION: ANCHOR TAB inspection should be performed before each use.
- 4.2 INSTALLATION: ANCHOR TAB Installation locations should be detailed by a licensed structural engineer, in the state in which you are working, prior to installation, placement of concrete and subsequent use.
- 4.2.1 ANCHOR TAB should be installed close enough to limit excessive swing (from eight feet (8 ft.) to ten feet (10 ft.) apart), approximately 30 degrees in either direction from anchorage, and on a 2:1 ratio away from the leading or perimeter edge of the structure.
 - 4.2.2 ANCHOR TAB must be installed parallel to the Form Deck with the ancillary distribution reinforcing perpendicular to the flutes of the decking.
 - 4.2.3 ANCHOR TAB must be embedded or attached to a deck structure of sufficient strength to support the required loads. WARNING: Do not use ANCHOR TAB on decks without concrete slabs. WARNING: ANCHOR TAB must be embedded into concrete strata to perform as designed.
 - 4.2.4 Form a slot in the center of a low flute in the decking. Insert an ANCHOR TAB into the slot. Pass an ancillary piece of reinforcing bar (re-bar) through the upper opening and chair to the required height.

Anchor Tab: Permanent Fall Protection Anchor Point for Steel Structures

- 4.2.5 ANCHOR TAB must have a minimum size ancillary #4/60 Grade x 24" piece of reinforcing bar (re-bar) passed through the hole on its embedded end. **WARNING:** A longer Distribution Bar (re-bar) may be required by your structural engineer. Consult with a structural engineer licensed in the state in which this product is being installed/used to determine if your structure is capable of supporting the required loads.
- 4.2.6 For 1.5 in. and 2.0 in. Form Deck configurations the ancillary re-bar must be 1 in. clear from the high rib of decking.
- 4.2.7 For 3 in. Form Deck configurations the ancillary #4 distribution bar (re-bar) can lay directly on the adjacent highs as the ANCHOR TAB becomes fully encased in the concrete placement.

NOTE: Ancillary 'V' shaped reinforcing bar, to accommodate 2" fireproofing, should be placed on 1" chairs.

Proper Installation of ANCHOR TAB in mesh Reinforced Deck prior to Concrete Placement



W 1.5 Form Lock Deck Installation

Ancillary Re-Bar and Chair/Anchor Placement



W2 Form Lock Deck Installation accommodates up to 1" fireproofing



W3 Form Lock Deck Installation accommodates up to 2" fireproofing

Anchorage Point Below Deck



5.0 CARE, MAINTAINANCE AND STORAGE

- ANCHOR TAB requires no regular maintenance.
- ANCHOR TAB product that appears deteriorated or damaged prior to installation must not be used. Return uninstalled or un-used ANCHOR TAB to ATNW for replacement.
- ANCHOR TAB must be stored in a dry place away from moisture, oils and corrosive chemicals and their vapors.

6.0 INSPECTION

- Inspect ANCHOR TAB prior to installation and use.
- Check ANCHOR TAB for cracks, bends or deformation.
- Check ANCHOR TAB for red rust or corrosion.
- Prior to concrete placement check to be sure ancillary re-bar is in proper position.

WARNING

Any ANCHOR TAB that shows any sign of wear or deterioration must be removed from service by cutting off the connection from the body of the ANCHOR TAB. Any ANCHOR TAB exposed to the forces of an arresting fall must be removed from service by cutting off the connection from the body of the ANCHOR TAB. ANCHOR TAB is intended for use only by construction site personnel during construction and/or maintenance personnel during or after construction. DO NOT use ANCHOR TAB for material handling.

WARRANTY

EXPRESS WARRANTY: ANCHOR TABS NORTHWEST (ATNW) warrants that the product furnished is free from mechanical defects or faulty workmanship for a one (1) year period from first use or eighteen (18) months from date of shipment, whichever occurs first, provided it is maintained and used in accordance with ATNW/BFI recommendations. ATNW shall be released from all obligations under this warranty in the event any repairs or modifications are made to the product or if warranty claim arises due to misuse. ATNW makes no warranty related to products or accessories not manufactured by ATNW and used in conjunction with ANCHOR TAB.

THIS WARRANTY IS IN LIEU OF ALL OTHER WARRANTIES, EXPRESS, IMPLIED OR STATUTORY AND IS STRICTLY LIMITED TO THE TERMS HEREOF. ATNW SPECIFICALLY DISCLAIMS ANY WARRANTY OR MERCHANTABILITY OR FITNESS FOR A PARTICULAR PURPOSE.



For additional information contact:

ATNW Customer Service

206.524.0092