

# BIKI'S<sup>®</sup>

## MENU

### Chiki BUN

**Classic Fried Chiki bun**..... **210 EGP**  
Fried chicken fillet, American cheese, coleslaw  
honey mustard, pickles

**Truffle Fried Chiki bun**..... **280 EGP**  
Crispy fillet, American cheese, arugula, pickles  
truffle mayo, tomato slice

**Buffalo Fried Chiki bun**..... **230 EGP**  
Fried chicken tossed in buffalo sauce, pickles  
blue cheese mayo, lettuce, American cheese

**Ranch Honey Glazed Chiki bun**..... **250 EGP**  
Crispy fillet glazed in Honey ranch sauce, beef bacon, lettuce

**Creamy Cheese fried Chiki bun**..... **250 EGP**  
Golden fillet, sour cream, pickles, black pepper mayo, arugula

**Mexican Fried Chiki bun**..... **240 EGP**  
Fried fillet loaded crispy nacho cheese, pico de gallo, jalapeños



### Snacks&Corndogs

**Classic fries**..... **85 EGP**  
Golden fries with special spices

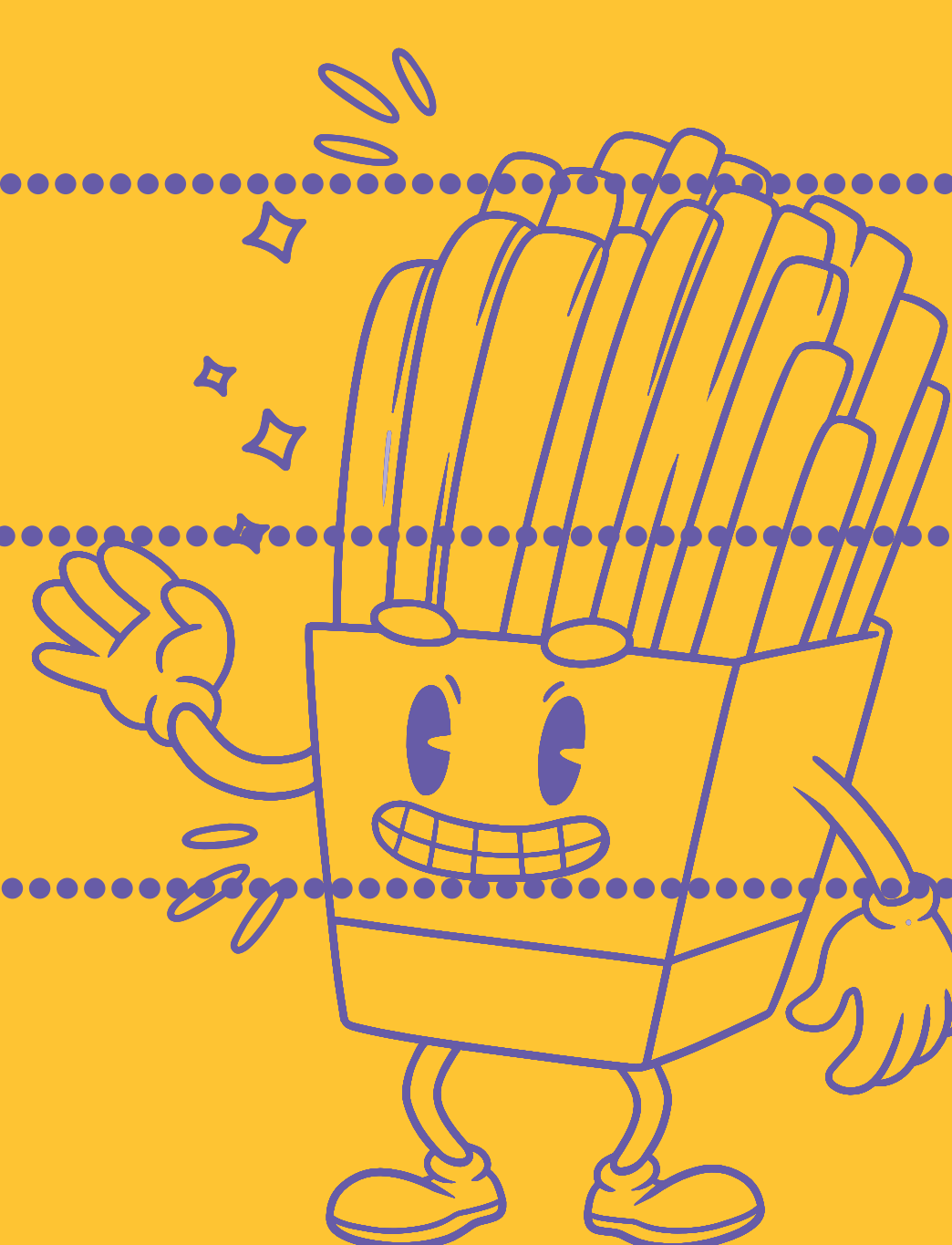
**Chicken tenders**..... **165 EGP**  
3 pcs crispy chicken tenders with your favorite sauce (buffalo & Cheese)

**Loaded Fries with chicken poppers**..... **185 EGP**  
Golden fries loaded with chicken poppers with hot honey & cheese sauce & pickles

**Corndog Original**..... **120 EGP**  
Classic hotdog dipped in crispy corn batter

**Corndog Doritos**..... **135 EGP**  
Crunchy twist with a doritos coating

**Premium Corndog**..... **155 EGP**  
Classic hotdog loaded with cheese sauce and relish



### Dessert

**Waffle**..... **90 EGP**  
Double sticks of waffles loaded with nutella topped with crunchy oreos

**Waffle Ice cream**..... **120 EGP**  
Waffle stick dipped in a creamy soft ice cream topped with crunchy oreos

**Ice cream soft**..... **95 EGP**  
Creamy ice cream with topping of your choice  
(Nutella - Caramel - Lotus)



### Milkshakes

**Vanilla Milkshake**..... **120 EGP**

**Blueberry Milkshake**..... **130 EGP**

**Mint Milkshake**..... **120 EGP**

**Peanut Butter Milkshake**..... **145 EGP**

**Salted Caramel Milkshake**..... **140 EGP**



### Refreshments

**Soft Drink (V7)**..... **40 EGP**

**Red bull (Add flavor 50 EGP)**..... **75 EGP**

**Water**..... **25 EGP**

