



COMMERCIAL.

CENTURY 21

Select Real Estate, Inc.



Vacant land next to highway with development potential!

19254 Union School Rd,
Redding, CA 96003

JASDIP SINGH
JSINGH@C21SELECTGROUP.COM
530-300-4387
LIC. 01877559
ADVANCED COMMERCIAL ADVISOR





DEVELOPMENT POSSIBILITIES

RV PARK



DEVELOPMENT POSSIBILITIES

HOTEL



DEVELOPMENT POSSIBILITIES
RV SALES/REPAIR

 **Carl's Jr.**

**CHARGRILLED
BURGERS**

**ORDER
HERE**

100% ANGUS BEEF
* * *
IS A GOOD MEAT THAT WE
LET ON FIRE


Carl's Jr.

**MADE
FRESH
TO ORDER**

Carl's Jr.
Tea Time Special
FREE ONE
SWEET POTATO BITES

\$3 TACO

QUEUE STARTS HERE!

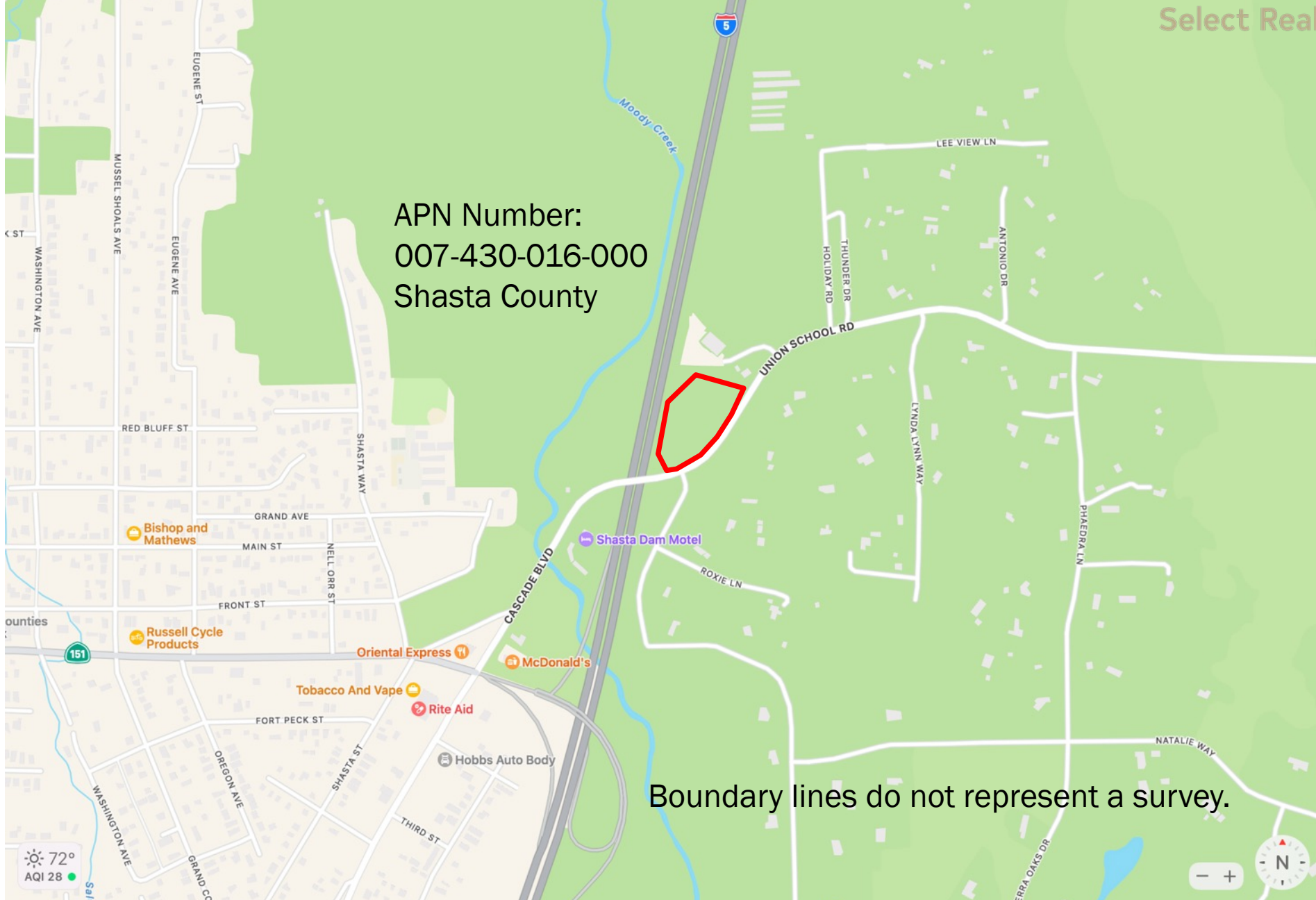
FRESH

DEVELOPMENT POSSIBILITIES

RESTAURANT



DEVELOPMENT POSSIBILITIES
AUTO/TRUCK SERVICE
STATION



APN Number:
007-430-016-000
Shasta County

Boundary lines do not represent a survey.

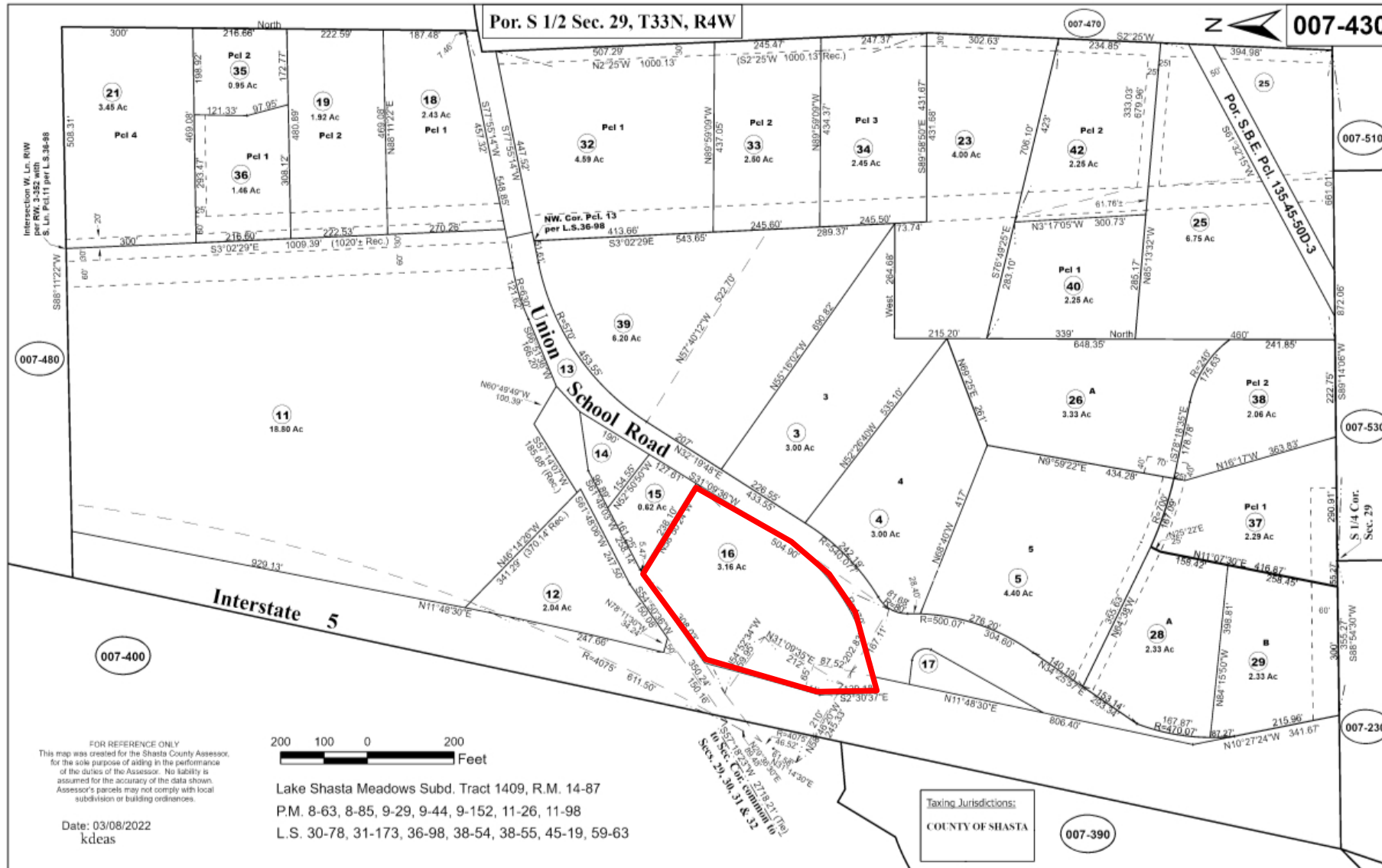


72°
AQI 28





Tax Map

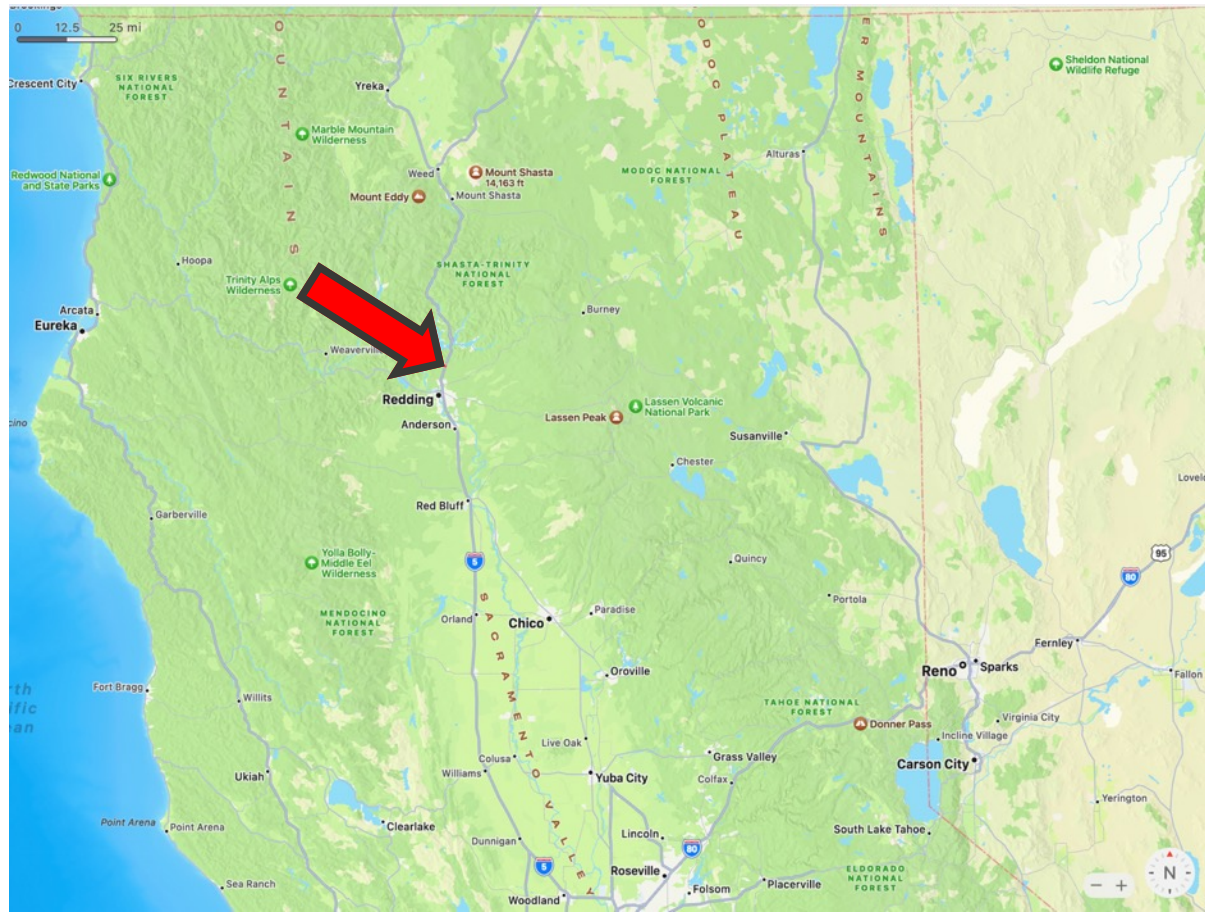


APN Number:
007-430-016-000
Shasta County

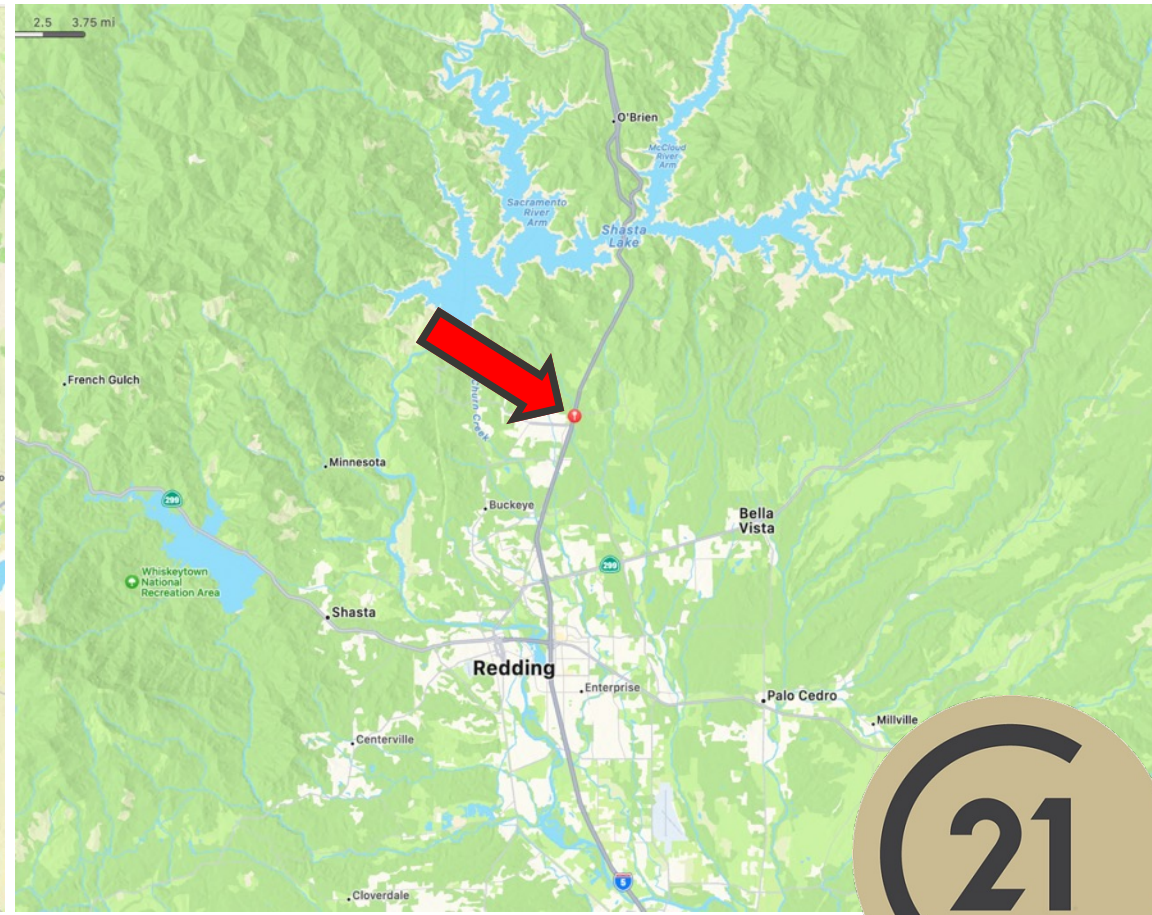


Property Location

State



City



Summary

Vacant lot located near Redding has many opportunities! Perfect for building a hotel, inn, standard restaurant, or more.

Property Information

- Vacant Lot
- Address: 19254 Union School Rd, Redding, CA 96003
- Lot Size: 3.16 Acres (137,650 SF)
- County: Shasta, CA
- APN: 007-430-016-000
- Zoning: C-H-DR - Highway Commercial District

Disclaimer: The information has been obtained from sources believed reliable; but has not been verified for accuracy or completeness. You should conduct a careful, independent investigation of the property and verify all information. Any reliance on this information is solely at your own risk.





COMMERCIAL.

CENTURY 21[®]

Select Real Estate, Inc.

Photos





COMMERCIAL.

CENTURY 21[®]

Select Real Estate, Inc.

Photos





COMMERCIAL.

CENTURY 21[®]

Select Real Estate, Inc.

Photos



HIGHWAY COMMERCIAL ALLOWED MANY USES!

HIGHLY VISIBLE LOCATION ON HWY 5

EXIT FROM FREEWAY

FRONTAGE ON THE STREET WHICH IS NOT BUSY

IDEAL LOCATION FOR MANY USES NEAR MOUNT SHASTA & CITY OF REDDING

BRING YOUR IMAGINATION, WE HAVE PRESENTED YOU THE PROPERTY

LET'S TALK + MAKE THE DEAL!



COMMERCIAL.

CENTURY 21

Select Real Estate, Inc.

INTEGRITY TRUST SERVICE

CONTACT:

JASDIP SINGH

JSINGH@C21SELECTGROUP.COM

530-300-4387

LIC. 01877559

ADVANCED COMMERCIAL ADVISOR

CENTURY 21 SELECT REAL ESTATE INC.

409 CENTURY PARK DR, YUBA CITY, CA 95991



*Stay in touch to
excel in life!*

Specializing in:

BUSINESS
COMMERCIAL
AGRICULTURAL

