



Established business with Real Estate
Concrete & Construction Supply Company



Larry Featherston 530-518-5635 Lic. 00582302
Jasdip Singh 530-300-4387 Lic. 01877559

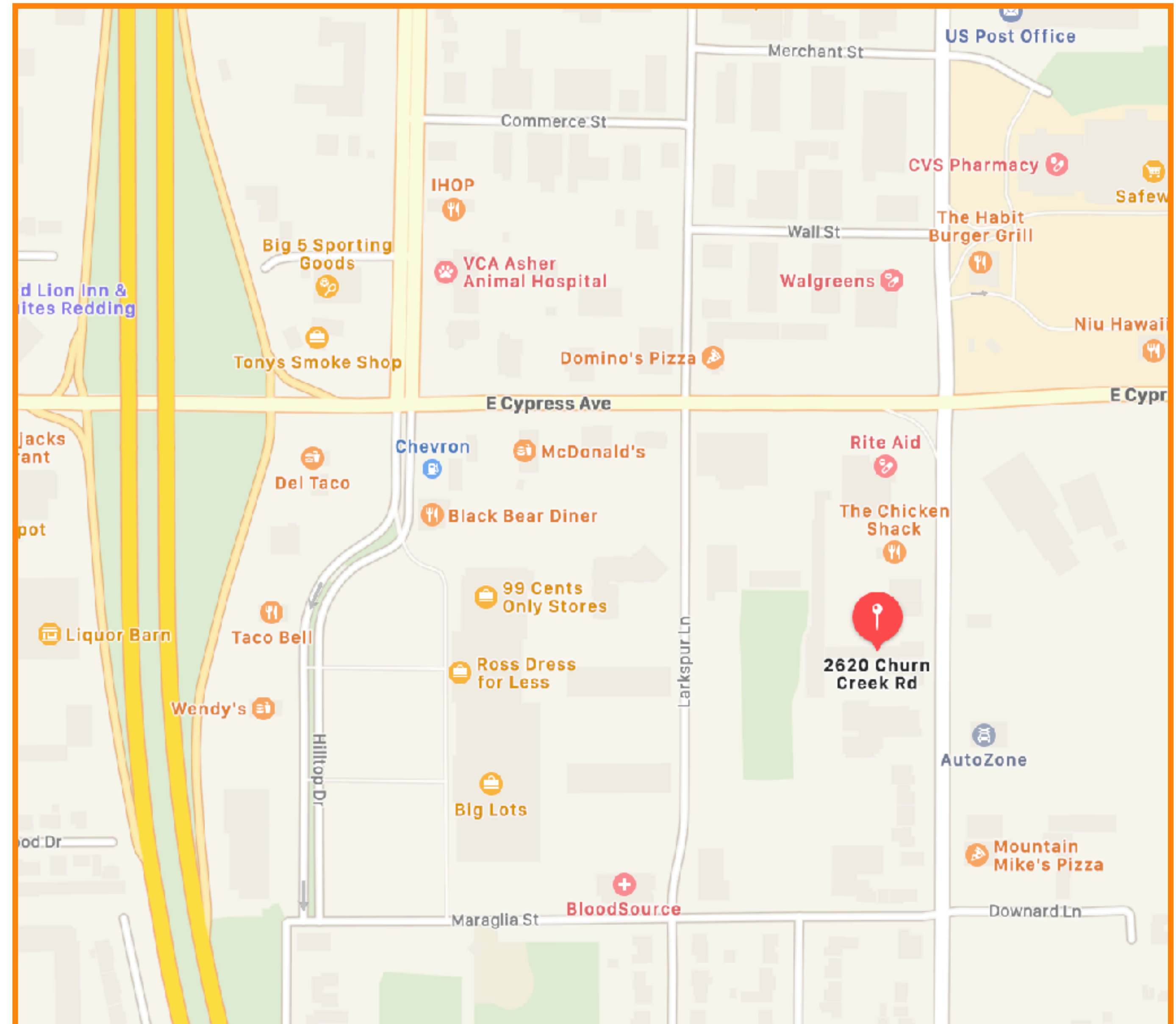
Address & Price

**2620 Churn Creek Rd,
Redding, CA 96002**

- Easy access for all kind of vehicles

Price: \$3,136,546

- Business: \$986,546
- Real Estate: \$1,250,000
- Inventory: \$900,000*
- *Inventory will be calculated by 3rd party on the day of change-over

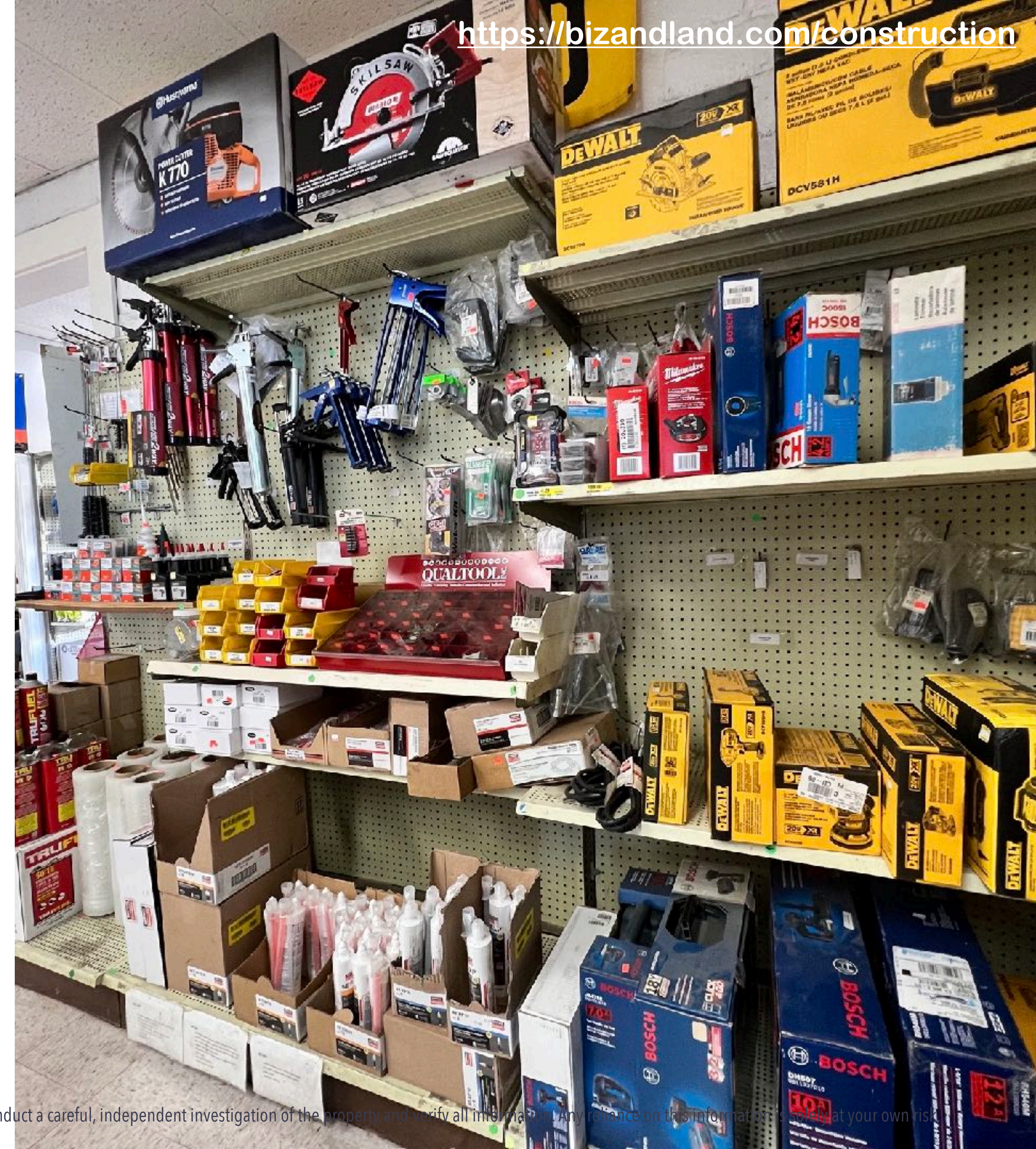


Business Information

- Established business in operation since 1973
- Loyal and satisfied customers
- There are more than 250 active customers
- Business keeps growing every year
- Store is stocked with construction items for commercial and residential projects
- Industrial grade branded tools and materials
- Trained staff to provide best customer service

Proudly known as “place to find hard to find items”

The information has been obtained from sources believed reliable, but has not been verified for accuracy or completeness. You should conduct a careful, independent investigation of the property and verify all information. Any reliance on this information is solely at your own risk.



Inventory, Building, Layout

- Great Location, near highway, easy access on Churn Creek Rd for all kind of small to heavy vehicles
- Organized areas for Tools, Rentals, Equipment, Parts, and other items needed by contractors
- Inventory includes varieties of items needed to complete Concrete and Construction work
- There are four sections of the building:
 1. Tools: It has tools, offices, bathroom, colors, etc.
 2. Parts, accessories, etc.
 3. Concrete, cement, and related items
 4. Hardware and Rentals



Property Information



2620 Churn Creek Rd, Redding, CA 96002

APN# 107-330-033-000 | County: Shasta, CA

Floor Plan

CHURN CREEK ROAD

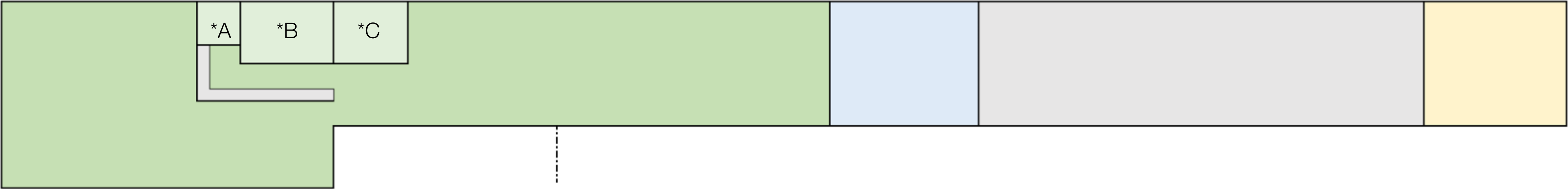
STORE
3250 +/- SF

STORAGE
WAREHOUSE
480 +/- SF

STORAGE
PARTS
1440 +/- SF

STORAGE
CHEMICALS
450 +/- SF

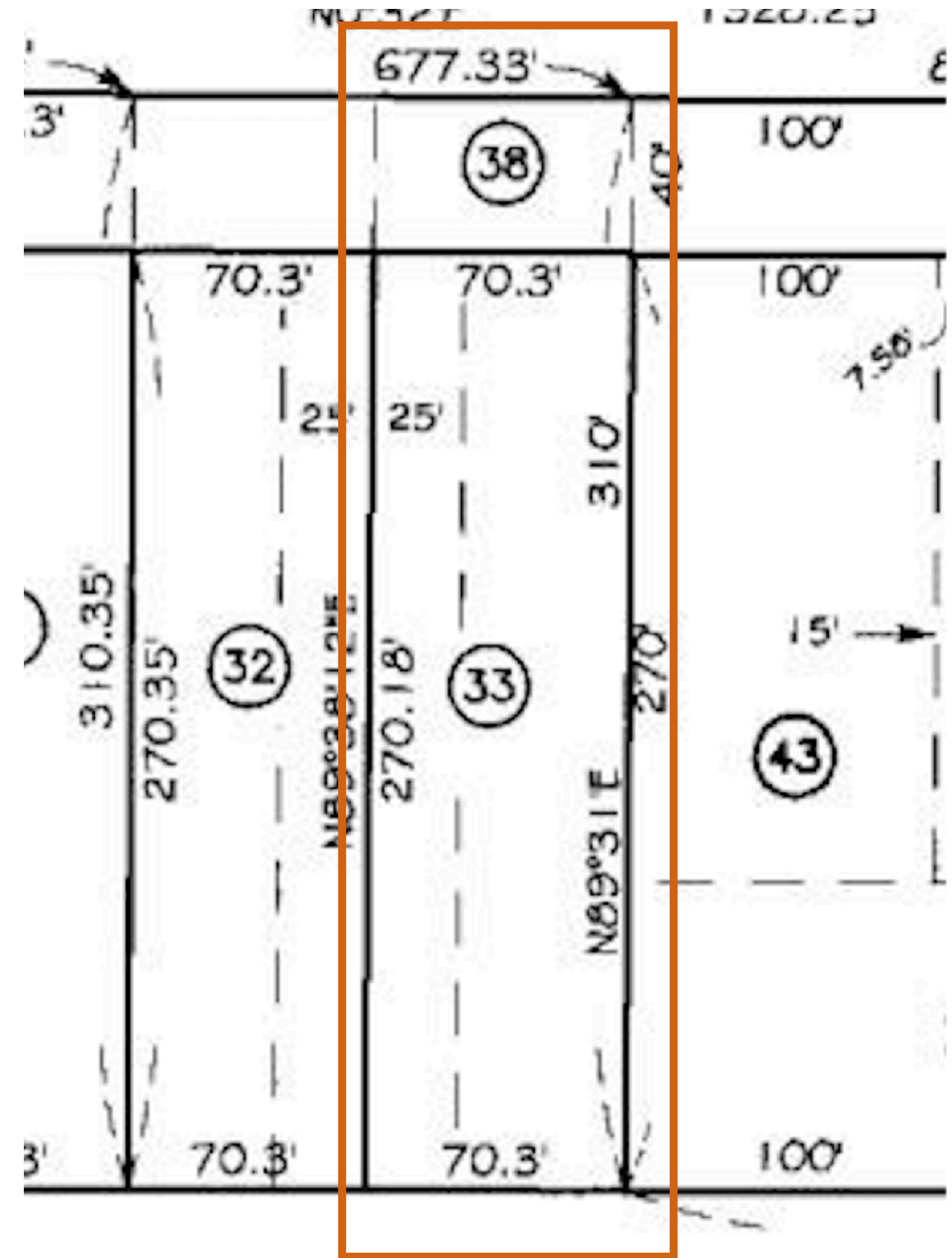
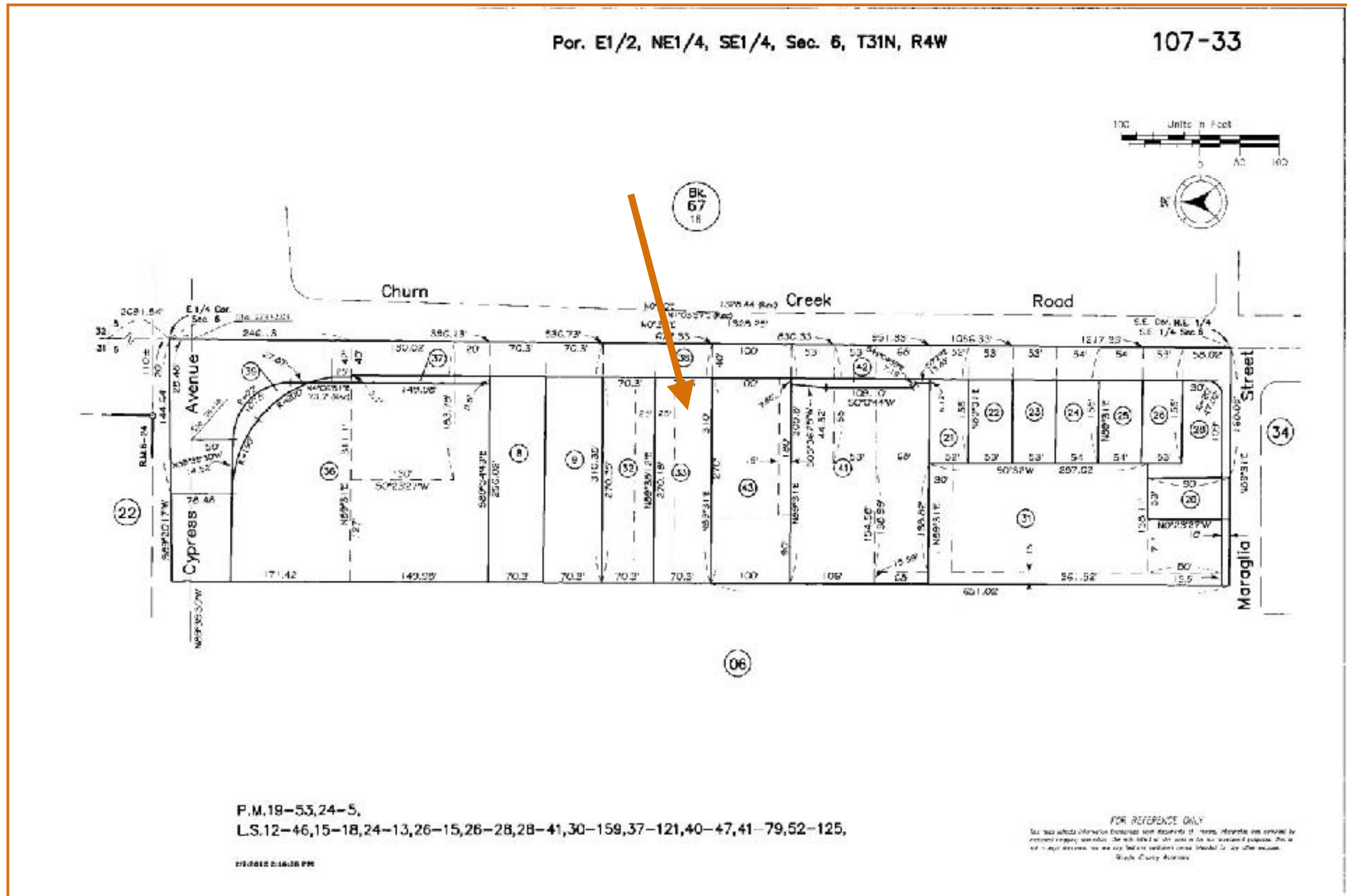
*A Restrooms *B Main Office *C Manager's Office



Lot Size: 0.437 Acres (19,051 SF)
Building size: 5,620 +/- SF

FENCED AERA FOR MATERIALS, RENTAL EQUIPMENT, ETC.

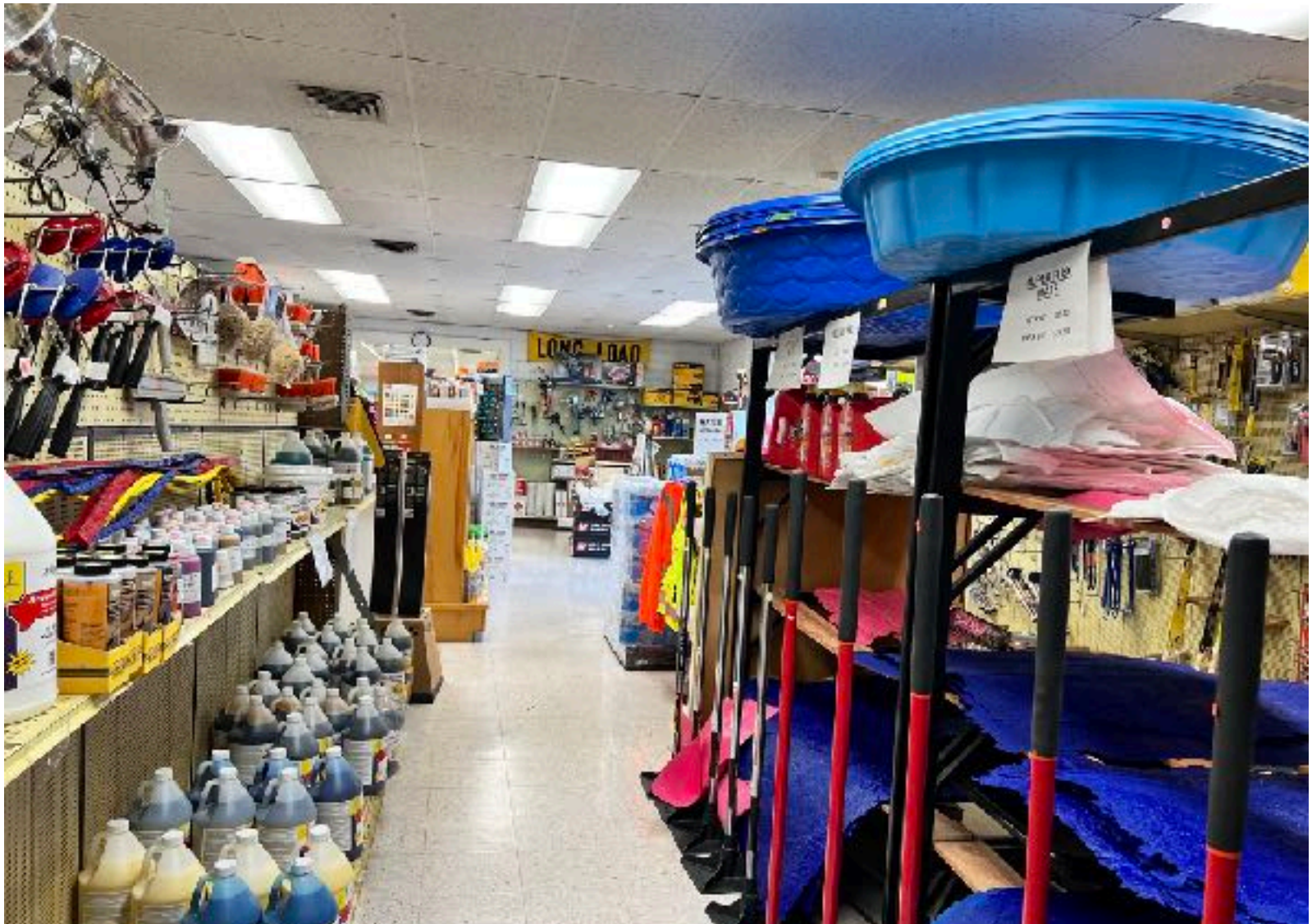
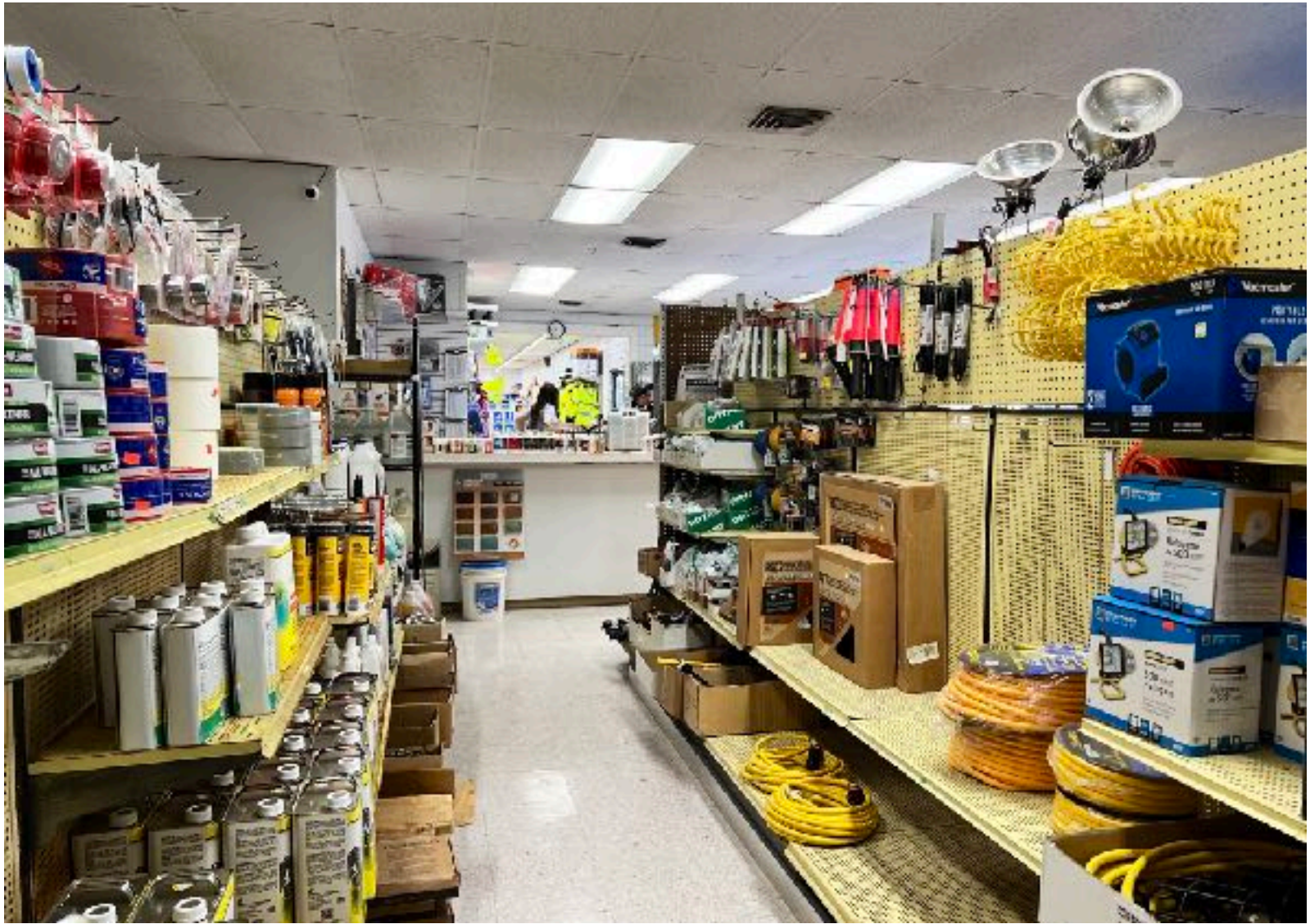
Tax Map



APN# 107-330-033-000 | Shasta County

<https://bizandland.com/construction>

The information has been obtained from sources believed reliable, but has not been verified for accuracy or completeness. You should conduct a careful, independent investigation of the property and verify all information. Any reliance on this information is solely at your own risk.



<https://bizandland.com/construction>



<https://bizandland.com/construction>



<https://bizandland.com/construction>

- **Showing Instructions:**
- Showing by appointment only
- Do not call or question employees
- Seller must present at the time of showing
- Showing will be after buyers signs NDA and completes Buyer Profile

Contact the Team:

Larry Featherston
LFeatherston@C21Selectgroup.com
530-518-5635
Lic. 00582302

Jasdip Singh
JSingh@C21SelectGroup.com
530-300-4387
Lic. 01877559