



COMMERCIAL

<https://bizandland.com/344>



344 Placerville Drive,
Placerville, CA 95667

PIONEER PLAZA



FOR LEASE

*344 Placerville Drive,
Placerville CA 95667*

RENT RATE: \$1.20/SF/Month Gross
TOTAL BUILDING SIZE: 22,075 SF
AVAILABLE FOR LEASE: 6,652 SF

Available Units:

Unit #3: 810 SF

Unit #6: 1,410 SF

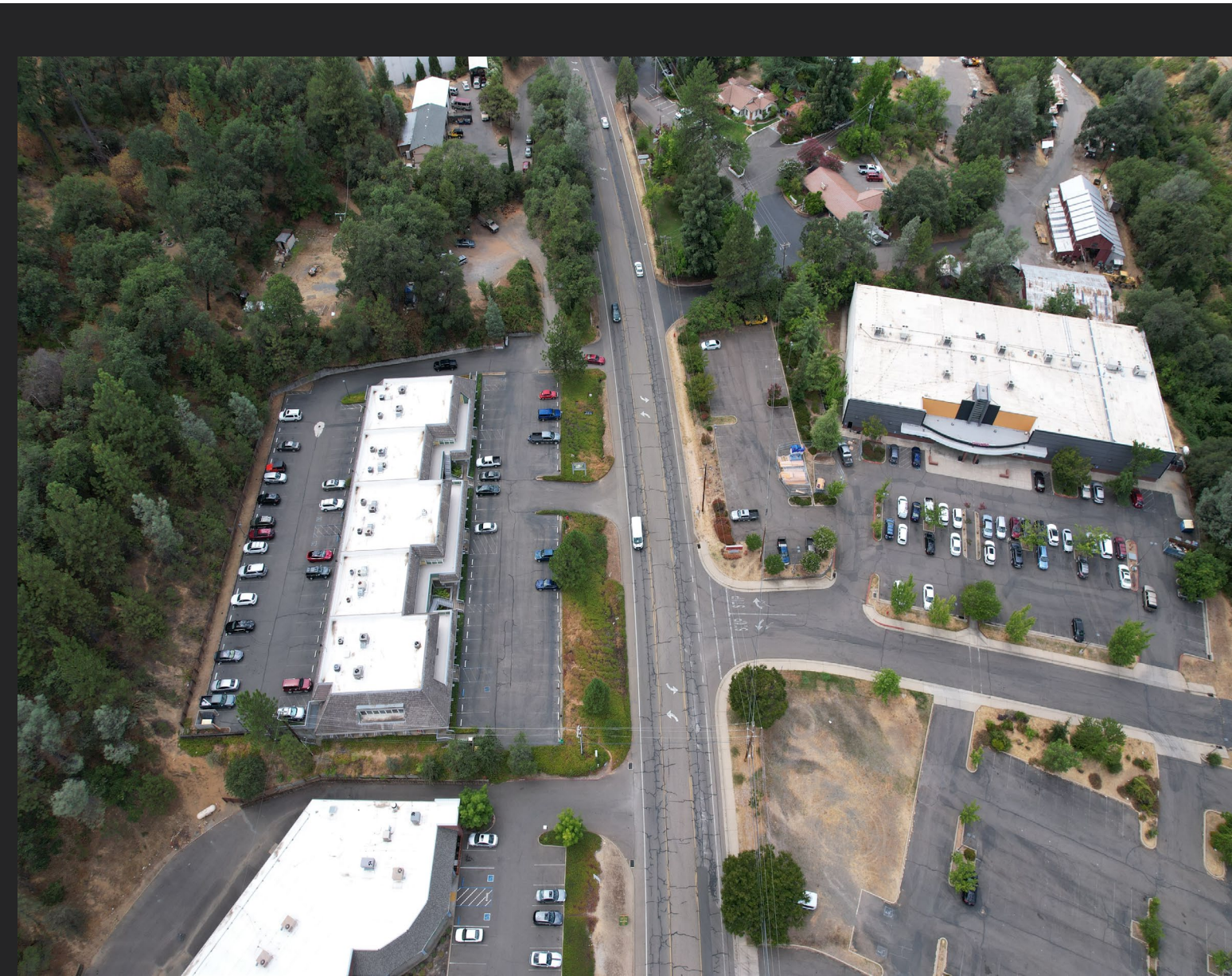
Unit #8: 968 SF

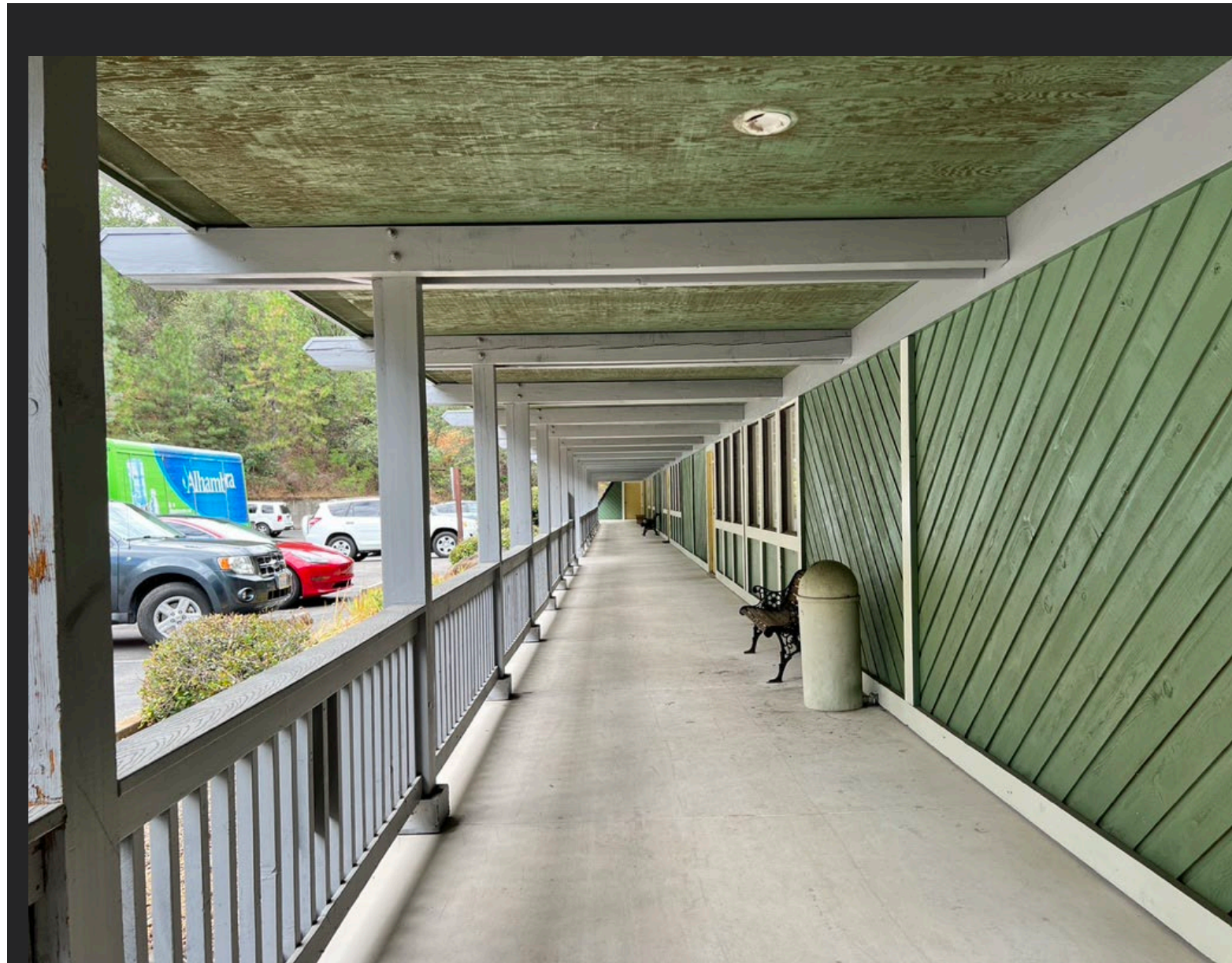
Unit #9-10: 2,714 SF

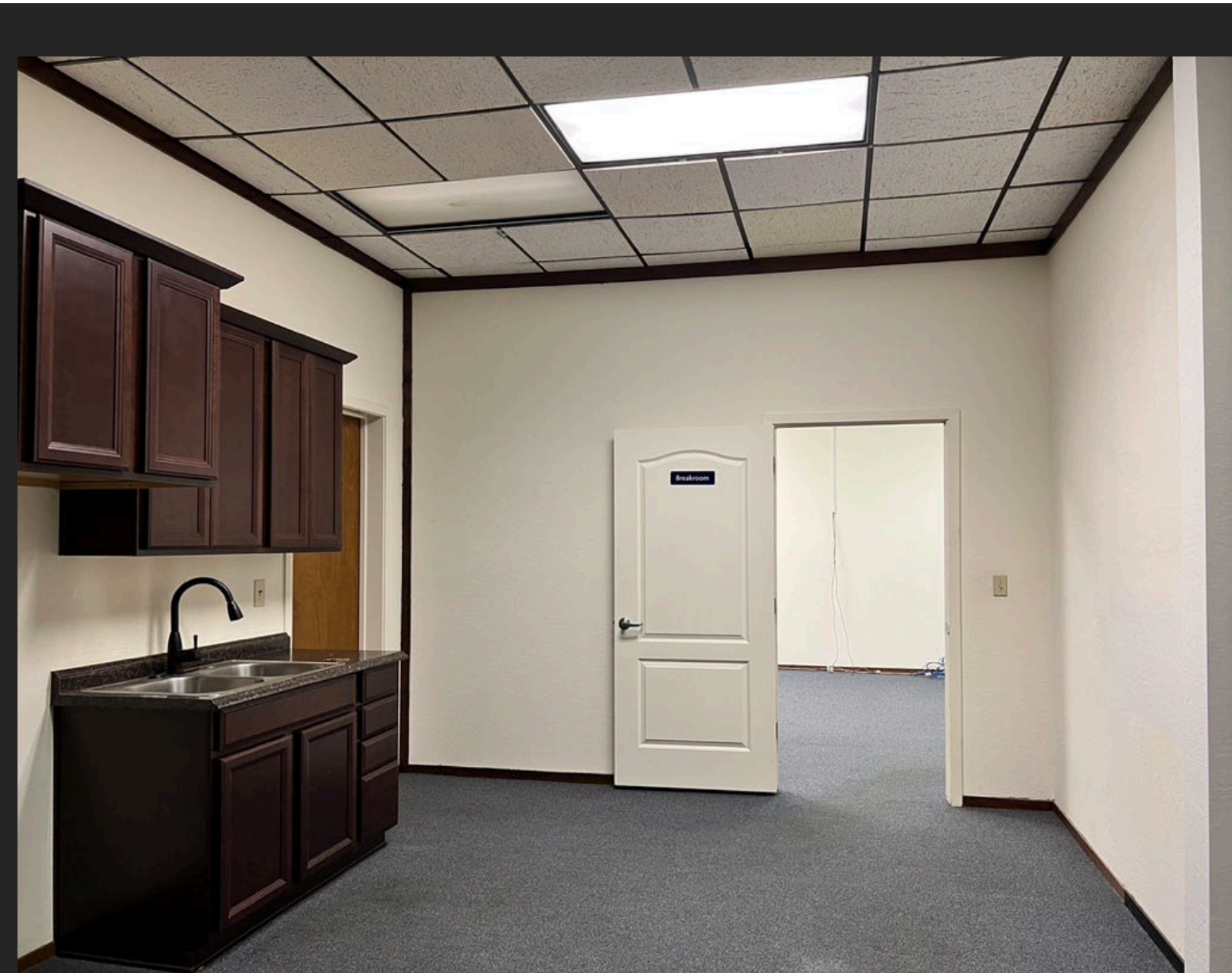
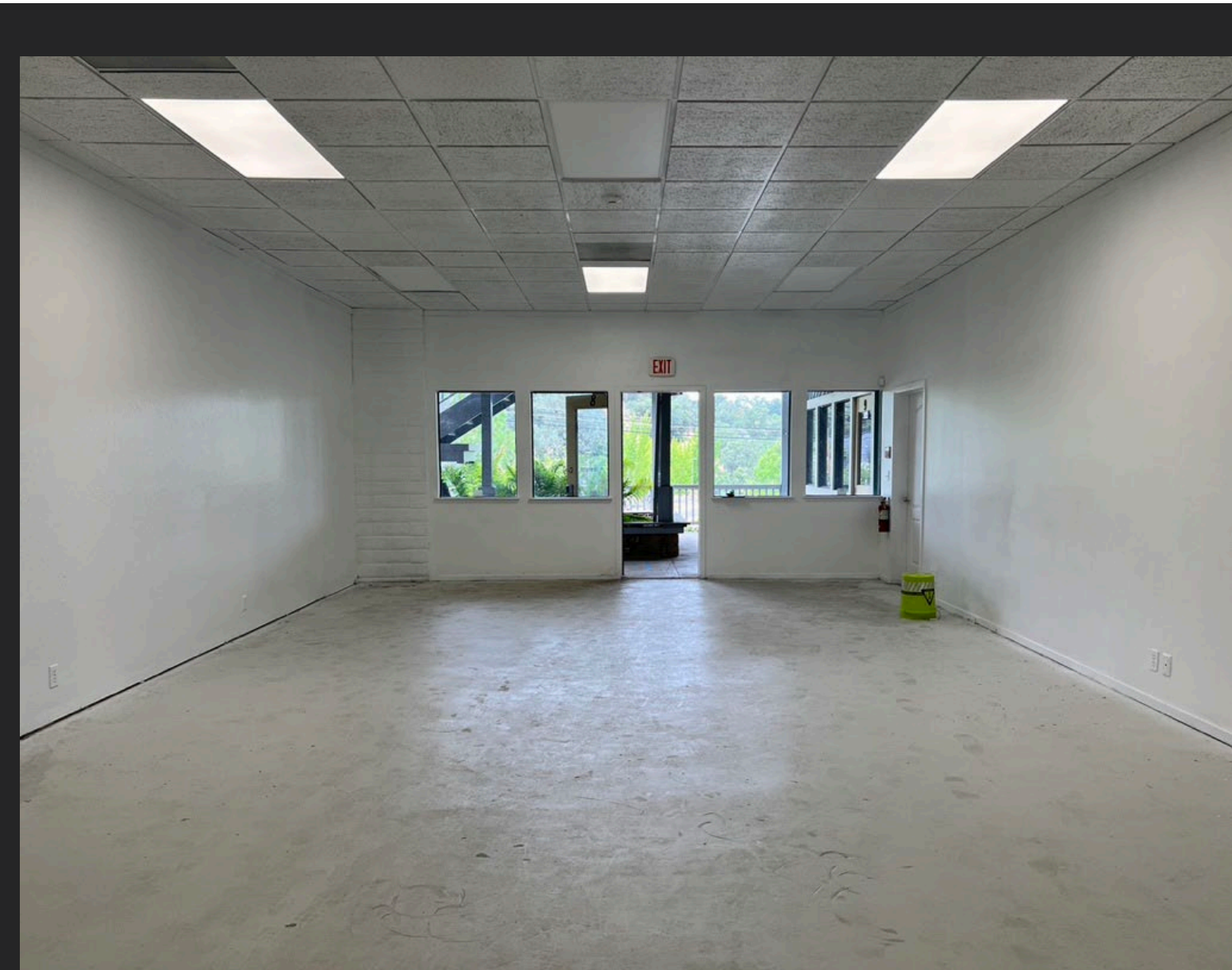
Unit #18: 750 SF

<https://bizandland.com/344>









INTEGRITY TRUST SERVICE

CONTACTS:

DAVID BOLSTER

DAVID.BOLSTER@C21SELECTGROUP.COM

530-295-2945

LIC. 01356944

COMMERCIAL SPECIALIST



LARRY FEATHERSTON

LARRY.FEATHERSTON@SELECTGROUPCOMMERCIAL.COM

530-518-5635

LIC. 00582302

COMMERCIAL SPECIALIST



JASDIP SINGH

JSINGH@C21SELECTGROUP.COM

530-300-4387

LIC. 01877559

ADVANCED COMMERCIAL ADVISOR

CENTURY 21 SELECT REAL ESTATE INC.

409 CENTURY PARK DR, YUBA CITY, CA 95991



Stay in touch to excel in life!

Specializing in:

BUSINESS

COMMERCIAL

AGRICULTURAL

