



COMMERCIAL

<https://bizandland.com/shasta-lake-vet-clinic>

Veterinary Practice FOR SALE Real Estate Included



4522 Shasta Dam Blvd, Shasta Lake, CA 96019 Shasta County

Building Area: 4,100 SF +/- Lot size: 13,362 SF (0.314 Acres)

LARRY FEATHERSTON

lfeatherston@c21selectgroup.com

530-518-5635

Lic. 00582302

JASDIP SINGH

jsingh@c21selectgroup.com

530-300-4387

Lic. 01877559

AARON LANDERS

alanders@c21selectgroup.com

530-552-1851

Lic. 02236787

CENTURY 21
Select Real Estate, Inc.

CENTURY 21
COMMERCIAL



COMMERCIAL®

<https://bizandland.com/shasta-lake-vet-clinic>

PROPERTY PICTURES



CENTURY 21
COMMERCIAL®



COMMERCIAL

<https://bizandland.com/shasta-lake-vet-clinic>

PROPERTY PICTURES



CENTURY 21
COMMERCIAL

PROPERTY PICTURES





COMMERCIAL®

<https://bizandland.com/shasta-lake-vet-clinic>

PROPERTY PICTURES



CENTURY 21
COMMERCIAL®



COMMERCIAL®

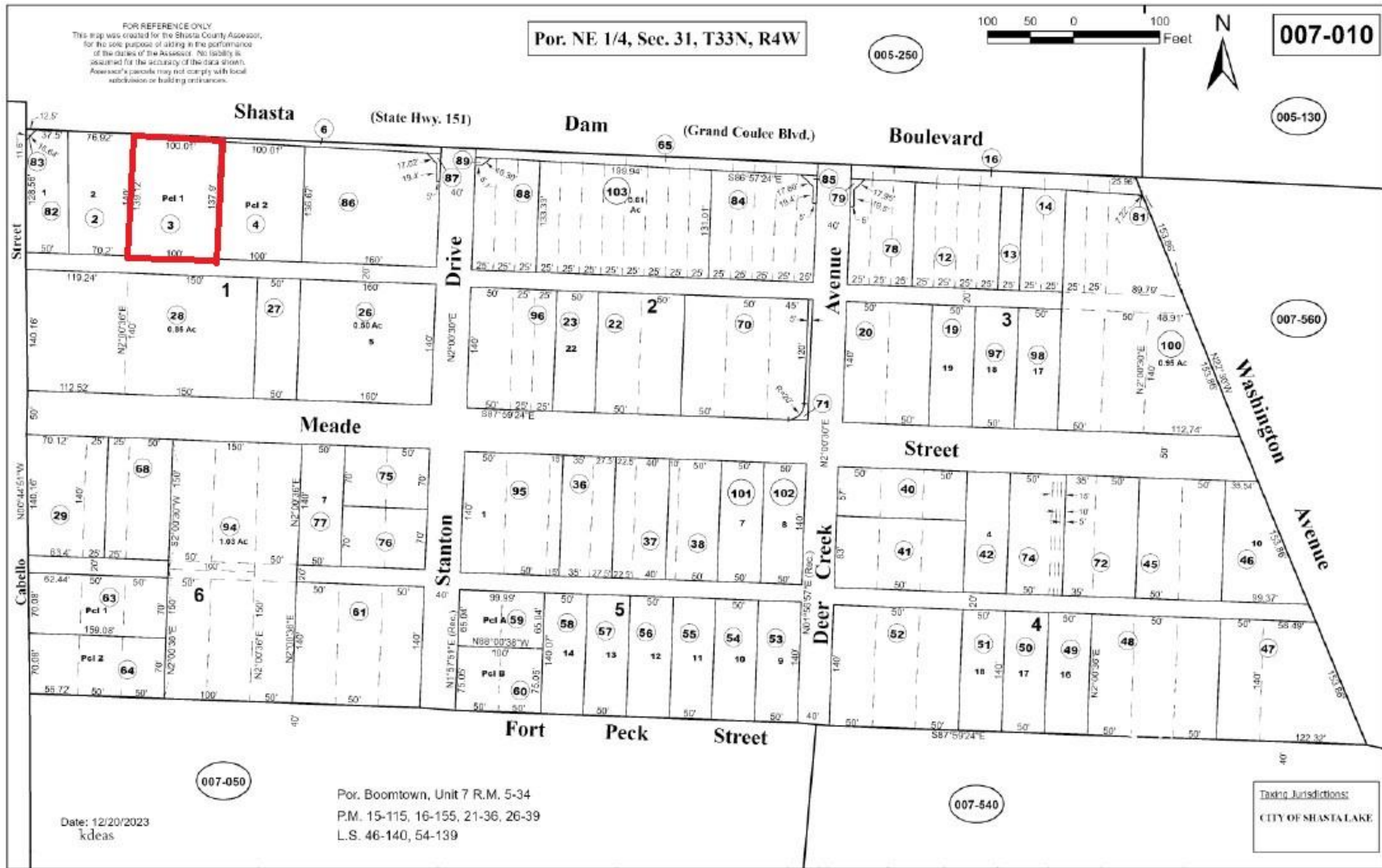
<https://bizandland.com/shasta-lake-vet-clinic>

PROPERTY PICTURES



CENTURY 21
COMMERCIAL®

TAX MAP | APN# 007-010-003-000 (SHASTA COUNTY)



Property Highlights:

- **Prime Location:** Situated on the main thoroughfare, Shasta Dam Blvd, with high traffic exposure.
- **Versatile Space:** Ideal for veterinary services, medical offices, retail, or other business ventures.
- **Established Clientele:** Previously operated as a veterinary clinic, making it a turnkey opportunity for similar businesses.
- **Ample Parking:** Convenient on-site parking for staff and clients.
- **Growth Potential:** Located in a growing community with increasing demand for local businesses.



Don't miss out on this fantastic investment opportunity!
Contact us today for pricing details.



COMMERCIAL®

<https://bizandland.com/shasta-lake-vet-clinic>



CENTURY 21
Select Real Estate, Inc.

CONTACTS

LARRY FEATHERSTON

lfeatherston@c21selectgroup.com

530-518-5635

Lic. 00582302

JASDIP SINGH

jsingh@c21selectgroup.com

530-300-4387

Lic. 01877559

AARON LANDERS

Alanders@c21selectgroup.com

530-552-1851

Lic. 02236787



CENTURY 21
COMMERCIAL®