



COMMERCIAL

Towing Company FOR SALE

Real Estate Included

1168 & 1224 Oro Dam Blvd W,
Oroville, CA 95965

Total Lot Area: 57,064 SF (1.31 Acre)

Pioneer Towing



CONTACTS

LARRY FEATHERSTON

lfeatherston@c21selectgroup.com

530-518-5635

Lic. 00582302

JASDIP SINGH

jsingh@c21selectgroup.com

530-300-4387

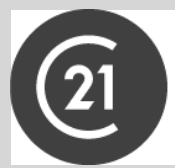
Lic. 01877559

AARON LANDERS

alanders@c21selectgroup.com

(530)552-1851

Lic. 02236787



COMMERCIAL

CENTURY 21

Select Real Estate, Inc.

CENTURY 21
COMMERCIAL

Century 21 Real Estate LLC. Century 21 Real Estate LLC fully supports the principles of the Fair Housing Act and Equal Opportunity Act. Each office is independently owned and operated.



COMMERCIAL®

<https://bizandland.com/pioneer-towing>

REAL ESTATE

Two Parcels:

1. 1224 Oro Dam Blvd W, Oroville, CA
95965
2. 1168 Oro Dam Blvd W, Oroville, CA
95965

Total Land Size: 1.31 Acres +/-

Total Building size: 1,048 SF +/-



Disclaimer: The information has been obtained from sources believed reliable; but has not been verified for accuracy or completeness. You should conduct a careful, independent investigation of the property and verify all information. Any reliance on this information is solely at your own risk.

**CENTURY 21
COMMERCIAL.**



COMMERCIAL®

<https://bizandland.com/pioneer-towing>

BUSINESS HIGHLIGHTS

Pioneer Towing:

YEAR 2024:

Sales: \$676,000 +/-

Gross Profit: \$621,000 +/-

Net Income: \$172,000 +/-



Disclaimer: The information has been obtained from sources believed reliable; but has not been verified for accuracy or completeness. You should conduct a careful, independent investigation of the property and verify all information. Any reliance on this information is solely at your own risk.

**CENTURY 21
COMMERCIAL.**



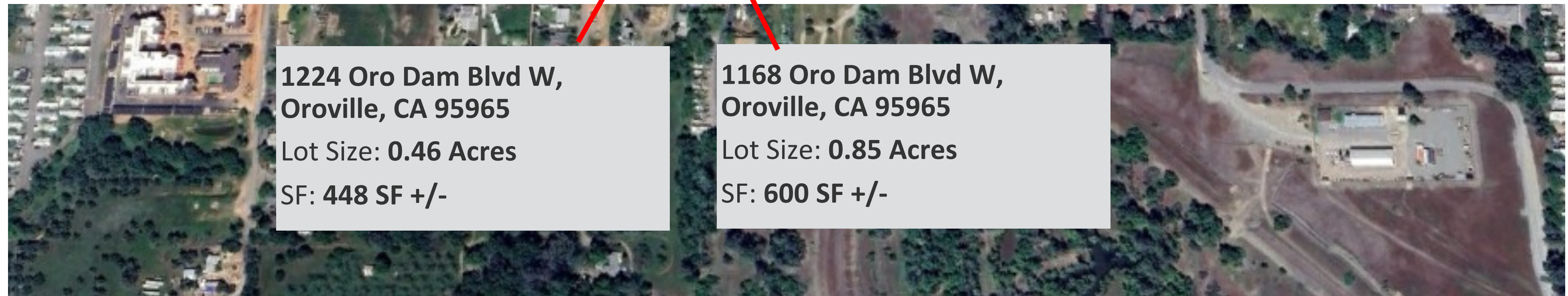
COMMERCIAL®

<https://bizandland.com/pioneer-towing>

PIONEER TOWING – LOCATION ON LOCAL MAP



Oro Dam Blvd W, Oroville, CA



**1224 Oro Dam Blvd W,
Oroville, CA 95965**

Lot Size: 0.46 Acres

SF: 448 SF +/-

**1168 Oro Dam Blvd W,
Oroville, CA 95965**

Lot Size: 0.85 Acres

SF: 600 SF +/-

**CENTURY 21
COMMERCIAL®**



COMMERCIAL®

<https://bizandland.com/pioneer-towing>

TAX MAP | APN# 030-195-025-000 and 030-196-006-000 Butte County



Disclaimer: The information has been obtained from sources believed reliable; but has not been verified for accuracy or completeness. You should conduct a careful, independent investigation of the property and verify all information. Any reliance on this information is solely at your own risk.

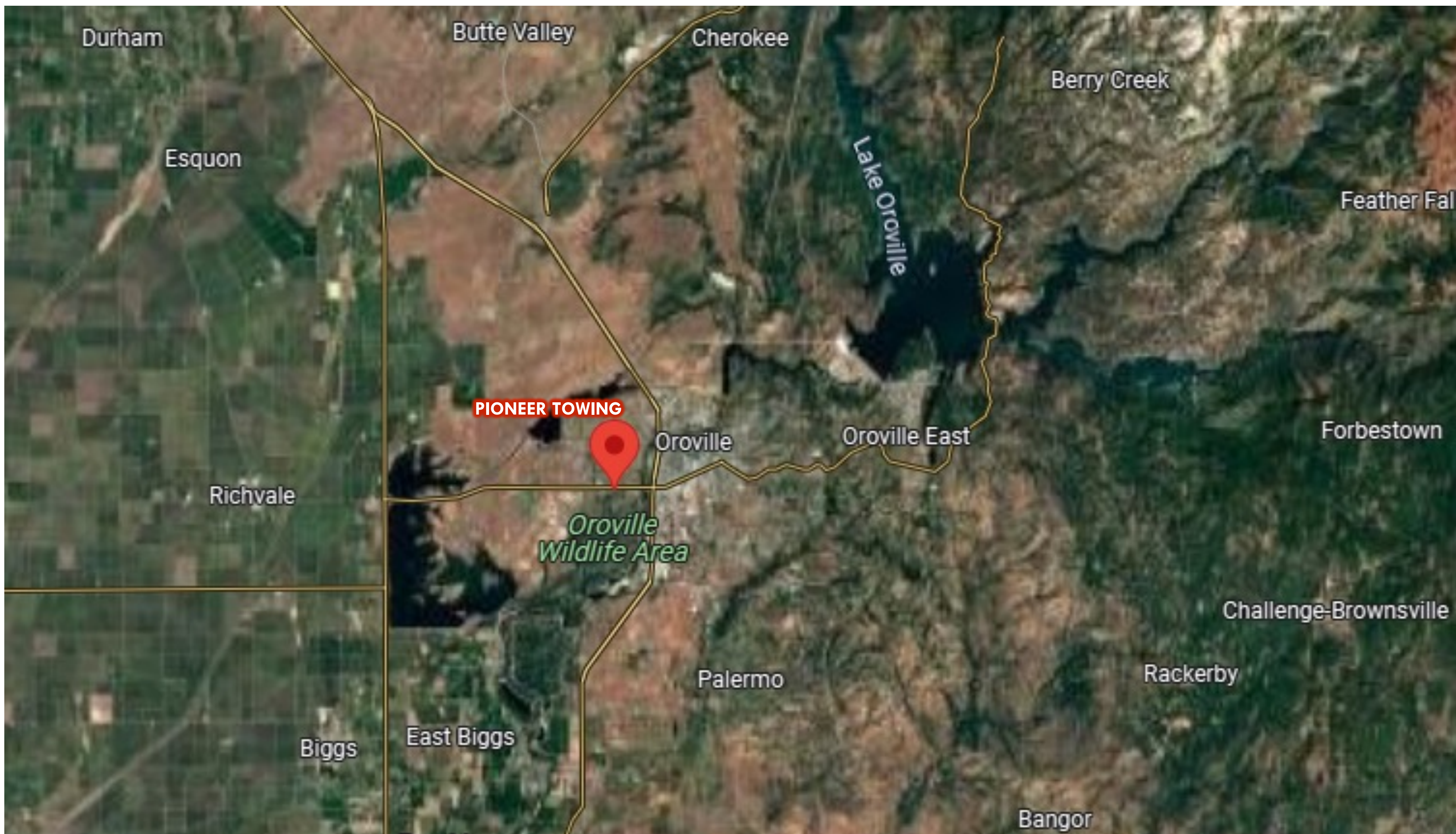
CENTURY 21
COMMERCIAL®



COMMERCIAL®

<https://bizandland.com/pioneer-towing>

PIONEER TOWING – OROVILLE CITY ON THE MAP



CENTURY 21
COMMERCIAL®



<u>TYPE</u>	<u>YEAR</u>	<u>MILEAGE</u>
Hino Wrecker Tow Truck Tow Truck	06/2013	155K
F650 XLT Super Duty	07/2014	232K
F-550 Rollback, Gas Auto 4x4	TBD	225K
Intl MV Rollback	02/2021	77K

