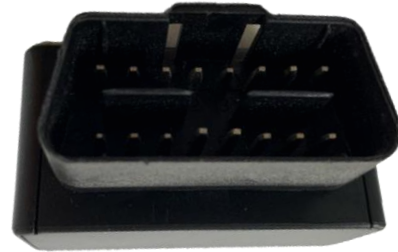


## OBD GPS Tracker

### Model: LCV22

OBD interfaces on vehicles are so useful. Any driver could find out the OBD port and just a single plug in, the GPS tracker plays as a safety guard and real-time GPS reporter. Especially for those owners do not want to change vehicle's wiring, or no much labor spending on installation or for a temporary tracking. Even more, it supports voice listening, backup battery performance and ACC status uploading.



### MARKET APPLICATIONS



**Renting Cars**



**Fleet Management**



**Construction Machines**



**Taxis**

### MAIN FEATURES

**Microphone for Voice Listening**

**Multiple Alerts**

Tow/engine status changing/vibration/low battery/overspeed/external power removed alerts, etc

**ACC Detection & Alarms**

**OTA Supported**

**Plug and Play**

**Auto-Defensing**

**Compact Size, Bult-in Battery**

**3 Versions for Global Network Connections**

**GSM SPECIFICATIONS**

---

	2G Version: GSM/GPRS network, Quad-band, 850/900/1800/1900
GSM frequency	4G Version 1: 2G GSM: 900/1800MHz 4G LTE FDD: B1/B3/B5/B7/B8/B20
	4G Version 2: 2G GSM: 850/900/1800/1900MHz 4G LTE FDD: B1/B2/B3/B4/B5/B7/B8/B28/B66
GPRS	Class 12, TCP/IP
Internal memory	8MB
Phase error	RMSPE<5,PPE<20
Max output	GPRS: Max 85.6Kbps(DL) / Max 85.6Kbps(UL) FDD-LTE: non-CA Cat1, Max 10Mbps(DL)/Max 5Mbps(UL) TDD-LTE: non-CA Cat1, Max 8Mbps(DL)/Max 2Mbps(UL)
Max frequency error	±0.1ppm
Receive sensitivity	Class II RBER2%(-102dBm)

**GPS SPECIFICATIONS**

---

Chipset	SIMCOM
RF Channel	GPS + BDS
Location accuracy	<=3 meters
Tracking sensitivity	-162dBm
Acquisition sensitivity	-148dBm
TTF (open sky)	Avg. hot start≤1sec Avg. cold start≤32sec

**OTHERS**

---

LED indicator	GPS(blue), GSM(green), Power(red)
Battery	150mAh/3.7V Li-Polymer battery
Working voltage/current	9-36VDC/38mA(12VDC)
Standby time	25 hours
Operating temperature	-20°C~ 70°C
Sensor	3D G-Sensor
SIM Card	Micro SIM
Size	82*42*16mm
Weight	70g