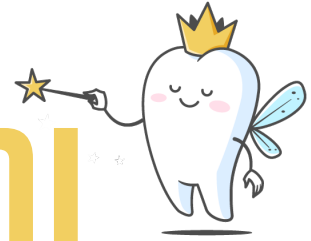




Ronald McDonald House Charities®
Bismarck, ND

RMHC BISMARCK CARE MOBILE ANNUAL SUPPORT CAMPAIGN



BACK TO SCHOOL With the Tooth Fairy!

Support the Ronald McDonald Care Mobile of North Dakota Dental Program

Join Us in Bringing Smiles to Children's Faces!



WHY DONATE?

- In 2023, the Care Mobile provided dental care to 1,183 children at 46 sites in 16 communities. The total value of treatment provided was \$698,772! We visit the communities of Belcourt/Dunseith, Bismarck, Cannon Ball/Solen, Dickinson, Fort Yates, Hebron, Mandan, Minot, New England, New Town, United Tribes Technical College, Mott/Regent, and Selfridge.

WHAT YOUR DONATION SUPPORTS:

- Supplies, operating expenses, and equipment for the Ronald McDonald Care Mobile of North Dakota Dental Program.
- Dental exams, cleanings, and treatments for children in need.
- Outreach programs to educate families on the importance of oral hygiene and dental health.
- Operation, maintenance, and upkeep of the "Care Mobile", our state of the art mobile dental clinic.

HOW YOUR SUPPORT HELPS:

- Prevents dental issues from escalating into serious health problems for children.
- Empowers children with healthy smiles and the confidence to succeed.
- Removes barriers to dental care for families facing financial hardship.

DONATION LEVELS

\$25 - Help Fuel the Care Mobile

- This amount helps cover the cost of fuel for the Care Mobile, ensuring it can reach children in need of dental care across underserved communities.

\$50 - Provide Basic Dental Supplies

- This donation helps purchase essential dental supplies.

\$100 - Support an Oral Health Screening

- Your contribution allows the Care Mobile to offer critical screenings for children ensuring early detection of potential issues.

\$250 - Sponsor a Child's Visit

- This donation level covers the cost of one child's comprehensive visit to the Care Mobile, including a check-up and oral health education.

\$500 - Equip the Care Mobile

- Your generous gift helps purchase essential medical equipment such as portable diagnostic tools as well as truck repairs, ensuring the Care Mobile is fully equipped to provide quality care.

\$1,000 - Provide a Day of Care

- A donation at this level supports an entire day of operations for the Care Mobile, allowing the team to serve multiple children and families in a community.

\$2,500 - Adopt a Community-Sponsor a site

- Your gift ensures that the Care Mobile can visit a specific community, providing consistent care and building trust with families in need.

\$5,000 - Provide a Week of Care

- This donation helps fund a week of operations for the Care Mobile reaching children who desperately are in need of dental services.



WANT MORE
INFO?

Scan to QR Code to left to be directed to our website, or contact us with questions!



READY TO
DONATE?

Scan to QR Code to left to be directed to our online donation page!