

YOU TAKE CARE OF THEM.
WE TAKE CARE
OF YOU.



Fire  Dex®

TURNOUTS

THE INTERCEPTOR PACKAGE

The Interceptor Package combines three products to combat the elements and keep you safe.

TECGEN51 Fatigues, dual-certified to handle the toughest non-fire calls while mitigating the use of potentially-contaminated structure gear.

H41 Interceptor particulate blocking hood, designed to block potentially carcinogenic particulates

FXR Turnouts, built with Active Posture Design™ to help reduce overexertion



TECGEN51 FATIGUES

PAGE 5



H41 INTERCEPTOR

PAGE 6 - 7



FXR TURNOUTS

PAGE 8



TECGEN 71

EXCLUSIVE OUTER SHELL

Our exclusive outer shell is designed to lessen heat stress by reducing weight and increasing flexibility.

Certified to NFPA 1971



**SUPERIOR FIBER
LIGHTEST WEIGHT SYSTEMS
HIGHEST THL**

TURNOUTS WITH TECGEN71 VS. TRADITIONAL TURNOUTS



**20%
LIGHTER**



**45%
THINNER**



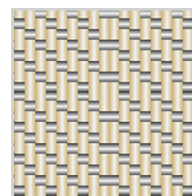
**70%
MORE FLEXIBLE**



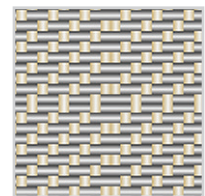
**50%
HIGHER THL**

WITHOUT SACRIFICING TPP

RIP TWILL CONSTRUCTION



**FACE
60% Kevlar®/
40% Nomex®**



**BACK
TECGEN fiber**



TECGEN 51

FIREFIGHTER FATIGUES

This dual-certified garment is designed to reduce heat stress and exposure to harmful carcinogens. With high levels of thermal protection and incredible breathability, TECGEN51 Fatigues make a comfortable fit for every department's needs.

Certified to NFPA 1951 and 1977

- Wearing structural gear on non-fire emergencies can cause unnecessary stress on your body and contribute to repeated exposure to contaminants
- Wear TECGEN51 Fatigues as your daily PPE to minimize exposure to carcinogens
- Our lightweight, single-layer garment is the perfect fit for 90% of your calls

THE PERFECT FIT FOR:

- EXTRICATION**
- SEARCH AND RESCUE**
- CONFINED SPACE SUPPORT PERSONNEL**
- JUNIOR FIREFIGHTING / EXPLORER PROGRAMS**
- WILDLAND, GRASS AND BRUSH FIRES**
- HIGH / LOW ANGLE RESCUE**
- TRENCH RESCUE**
- GOODWILL CALLS**
- MVA**

- Two Models: Levels 1 and 3
- Two-Piece or Coverall
- Tan, Black, or Navy



FXR CUSTOM TURNOUTS

FXR turnouts are specifically designed to minimize firefighter stress and fatigue through Active Posture Design™, allowing for full range of motion - especially while wearing your SCBA!

Certified to NFPA 1971



SEAMLESS COLLAR

Comfort and NFPA compliant protection without the need for a throat tab



OMNIDEX™ SHOULDER

Eliminates coat rise and sleeve retraction by moving the shoulder seam to the natural bending point, allowing for optimal SCBA positioning



DEXFLEX™ KNEES AND ELBOWS

Move freely and reduce resistance with naturally-bent knees and elbows



ATHLETIC PANT DESIGN

Provides natural movement and comfort in a forward firefighting position



AVAILABLE IN A VARIETY OF MATERIALS INCLUDING PROXIMITY.

FXM CUSTOM TURNOUTS

Traditional, proven performance characteristics paired with the latest in comfort features in a modern style turnout.

Certified to NFPA 1971



DEXFLEX™ KNEES AND ELBOWS

Move freely and reduce resistance with naturally-bent knees and elbows



MODERN TAPERED HEM

Coverage where you need it featuring a shorter front and longer back



MAXIMUM COMFORT

Full range of motion and increased flexibility and durability with a seamless crotch gusset



DEXFLEX™ REVERSE TAPERED CUFF

Minimizes wear and tear from cuff dragging

FXC ECONOMICAL TURNOUTS

FXC Turnouts are an excellent option for budget conscious departments.

Available in two models: standard and deluxe

Certified to NFPA 1971



DELUXE



STANDARD

**EXPRESS
PROGRAM**



- Available in Express
- Made in Medina, Ohio
- Outer Shells: Nomex[®] IIIA or Pioneer[™]
- Thermals: Q-8[™] or Defender[™] M Elite NP
- Moisture Barrier: Stedair[®] 3000

5 DAY DELIVERY
FIREDEX.COM/EXPRESS

EMS

EMS gear offers a comfortable fit with a construction that is waterproof, breathable and bloodborne pathogen-resistant to protect you from line-of-duty hazards.

Certified to NFPA 1999



USAR

Lightweight, breathable protection for technical rescue, emergency medical, and other non-fire incident calls where rugged durability and bloodborne pathogen protection are needed.

Certified to NFPA 1999 and 1951



AVAILABLE WITH TECGEN51 FABRIC | [FIREDEX.COM/TECGEN51FABRIC](https://firedex.com/tecgen51fabric)

WILDLAND

This traditional design is an economical solution for departments in need of single-layer, lightweight, FR protective apparel.

Available in two-piece or coverall.

Certified to NFPA 1977



DO YOU KNOW...

When your gear needs inspected?

What gear is at each station?

When your gear expires?

Try using GearTracker to keep your records up to date

Geartracker.firedex.com.

Gear  **Tracker**

