

Vessels



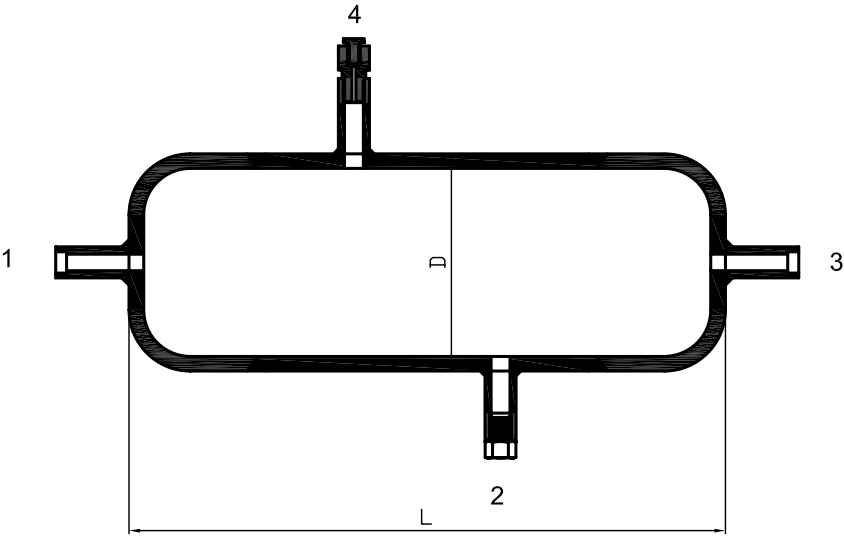
Features

- © Pressure rating ranges from class 300 to 2500
- © Maximum working temperature: 1100°F (594 °C)
- © Full-penetration gas tungsten arc-weld construction to ensure great strength and leak-tight performance
- © All vessels are cleaned in accordance to VFK standard clean procedure.
The connection ends are protected with cap or plug
- © Every pot or vessel is tested for strength with pure water at 1.5 times the working pressure, and is tested thereafter for leak-tight performance with nitrogen at its working pressure.

CP Series

Dimensions

D	L
3"(88.9)	215
4"(114.3)	360



1.Dimensions are for reference only and are subject to change.

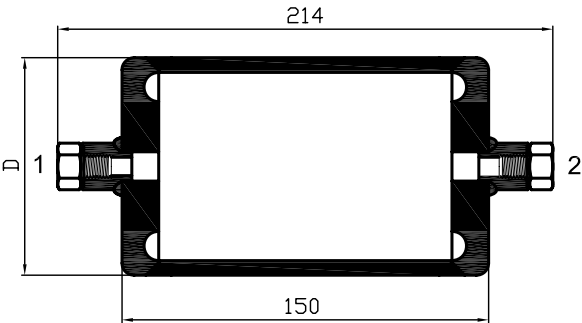
Configurations

2A	2B	3A	3B	3C	4A
<p>Side view of the device with port 1 on the left and port 2 on the right.</p>	<p>Side view of the device with port 1 on the left, port 2 on the right, and a central port 3.</p>	<p>Side view of the device with port 1 on the left, port 2 on the right, and a central port 3.</p>	<p>Side view of the device with port 1 on the left, port 2 on the right, and a central port 3.</p>	<p>Side view of the device with port 1 on the left, port 2 on the right, and a central port 3.</p>	<p>Side view of the device with port 1 on the left, port 2 on the right, a central port 3, and a top port 4.</p>

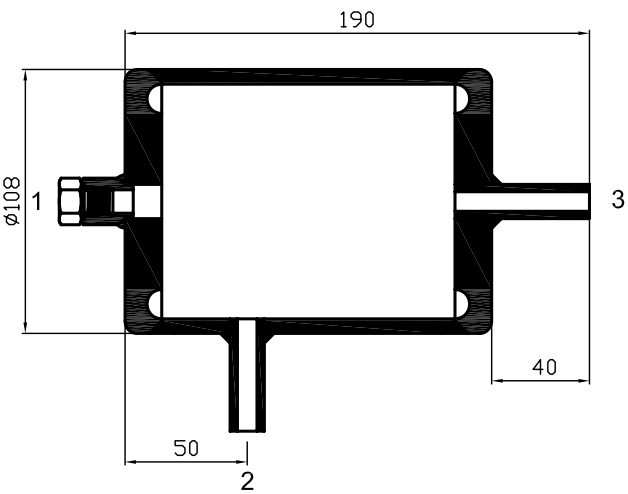
SV Series

Configurations

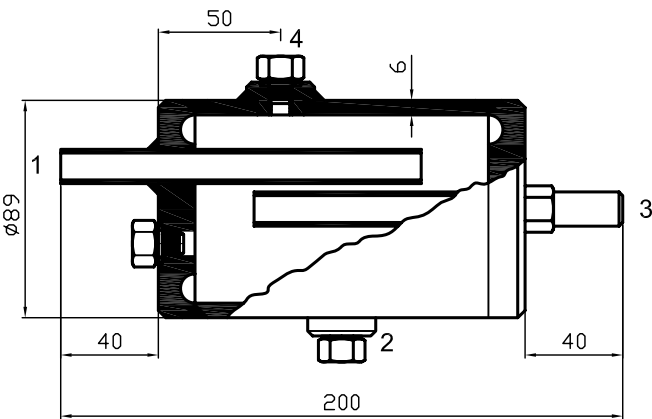
2A



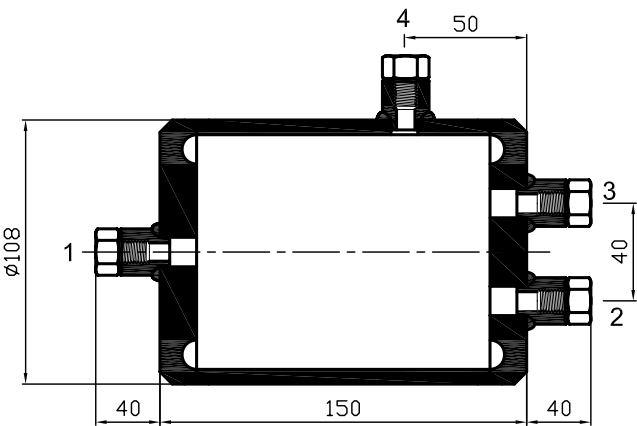
3A



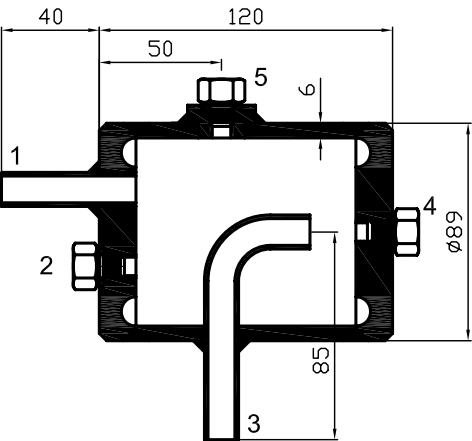
4A

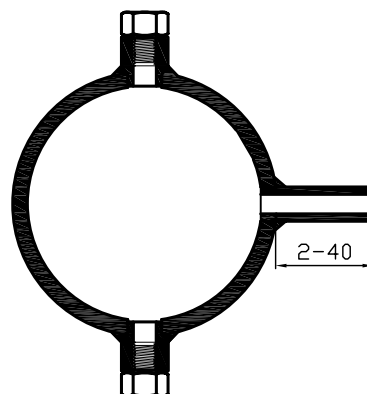
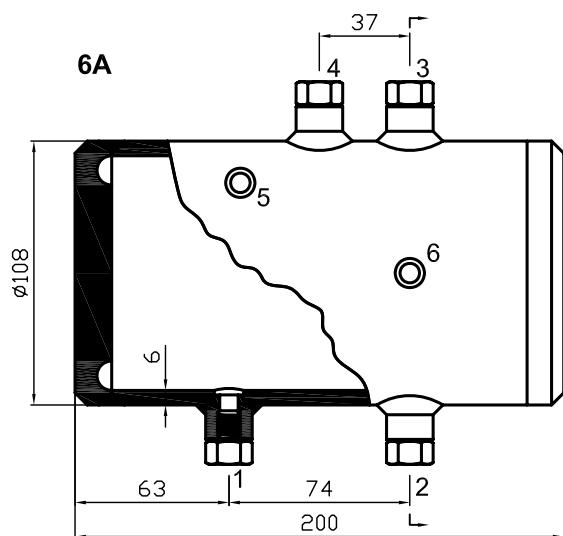


4B



5A





Ordering Information

SS		SV		36		4B		FN 8		TS14		PS12	
Body Material		Series		Body O.D.		Pressure Rating		Configuration		Port 1 Type		Port 1 Size	
SS	316 SS	CP		3	88.9	3	CLASS 300	2A		FN	Female NPT	2	1/8"
6L	316L SS	SV		4	114.3	6	CLASS 600	2B		FR	Female FRT	4	1/4"
S4	304 SS					9	CLASS 900	3A		TS	Fractional Tube Socket Weld	8	1/2" or 8 mm
4L	304L SS					15	CLASS 1500	3B		TB	Fractional Tube Butt Weld	10	10 mm
S1	321 SS					25	CLASS 2500	3C		PS	Pipe Socket Weld	12	3/4" or 12 mm
11	P11							4A		PB	Pipe Butt Weld	14	14 mm
22	P22							4B		MTS	Metric Tube Socket Weld	16	1" or 16 mm
CS	Carbon Steel							5A		MTB	Metric Tube Butt Weld		
								6A		FT	Fractional Tube		
										MT	Metric Tube		
										FX	Fractional Tube Fitting		
										MX	Metric Tube Fitting		

Same as Port 1

Specified in the same way as the port 1 type and size