

FIND OIL & GAS with Hydrocarbon Surveys (HS)!

HYDROCARBON SURVEYS'S SYSTEM OFFERS POWERFUL AND INEXPENSIVE ENHANCEMENT TOOL FOR YOUR GEOLOGICAL & GEOPHYSICAL LINEUP

HS SYSTEM WILL:

1. FIND HYDROCARBONS BELOW THE POINT OF MEASUREMENT.
2. FIND LATERAL EXTENT OF RESERVOIRS.
3. GIVE A RELATIVE STRENGTH READING FOR TOTAL RESERVOIR DENSITY.
4. GIVE A DISTINCT READING FOR NON-HYDROCARBON BEARING FAULTS.

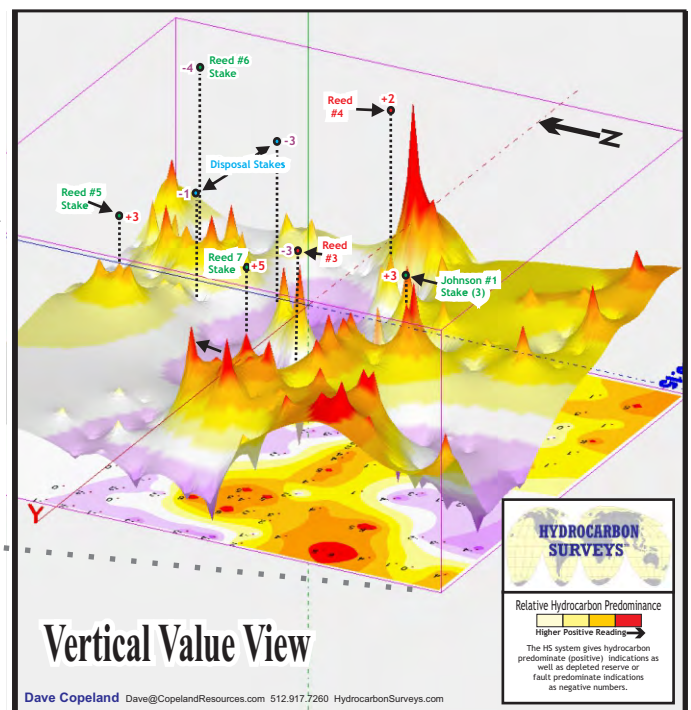
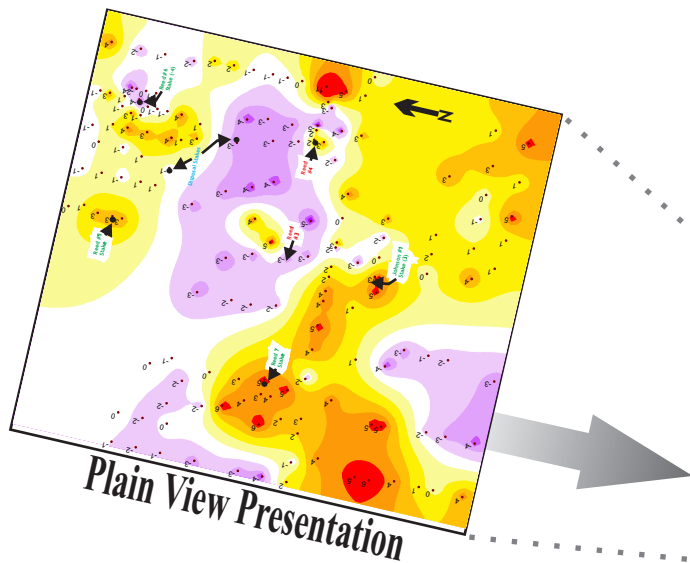
HS SYSTEM APPLICATIONS:

LOW COST PROSPECTING FOR LEASING, NEW DRILLS, RE-COMPLETIONS, ETC.

WATERFLOODS - DETERMINE FLOOD EFFICIENCY & AREAS TO IMPROVE DRAINAGE.

The preference is to run a grid pattern with the HS monitoring system. A color coded relative value map is presented after the data is processed. In some cases the client procures a "Vertical Value View Presentation" as to the right. This visualization tool gives a clearer idea of the

relative values. HS's staff can work with the geological team to correlate the HS data with data from other sources. Data presentations can be overlaid on topographical, geological, etc. maps. This example is from a low density pattern.



OUR SYSTEM UTILIZES A HYDROCARBON MONITORING SENSOR.

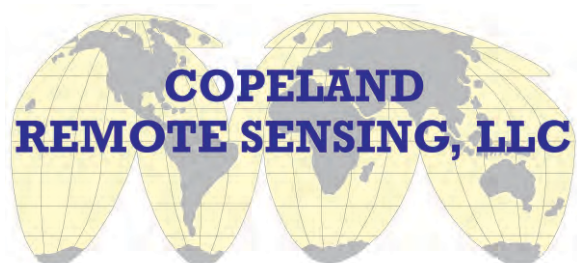
HS takes individual point measurements (requiring app. thirty seconds per point, plus travel time). Measurements can be taken over land or water and are adjusted for most roadways or other surface materials.

As readings are taken, the pattern and density for future readings can be adjusted on the fly to give greater detail to areas of interest. HS's real-time data acquisition versatility adds to its being a cost and time effective tool.

Data interpretation, mapping & presentation have a short turn around time and can be supplied in formats that can be imported by most mapping software.

See HS APPLICATION SHEETS & HydrocarbonSurveys.com for additional information.

PATENT US 10,761,237 B1 Sep. 1, 2020



C. Dave Copeland - 512-917-7260 c
Dave@CopelandResources.com
CopelandResources.com