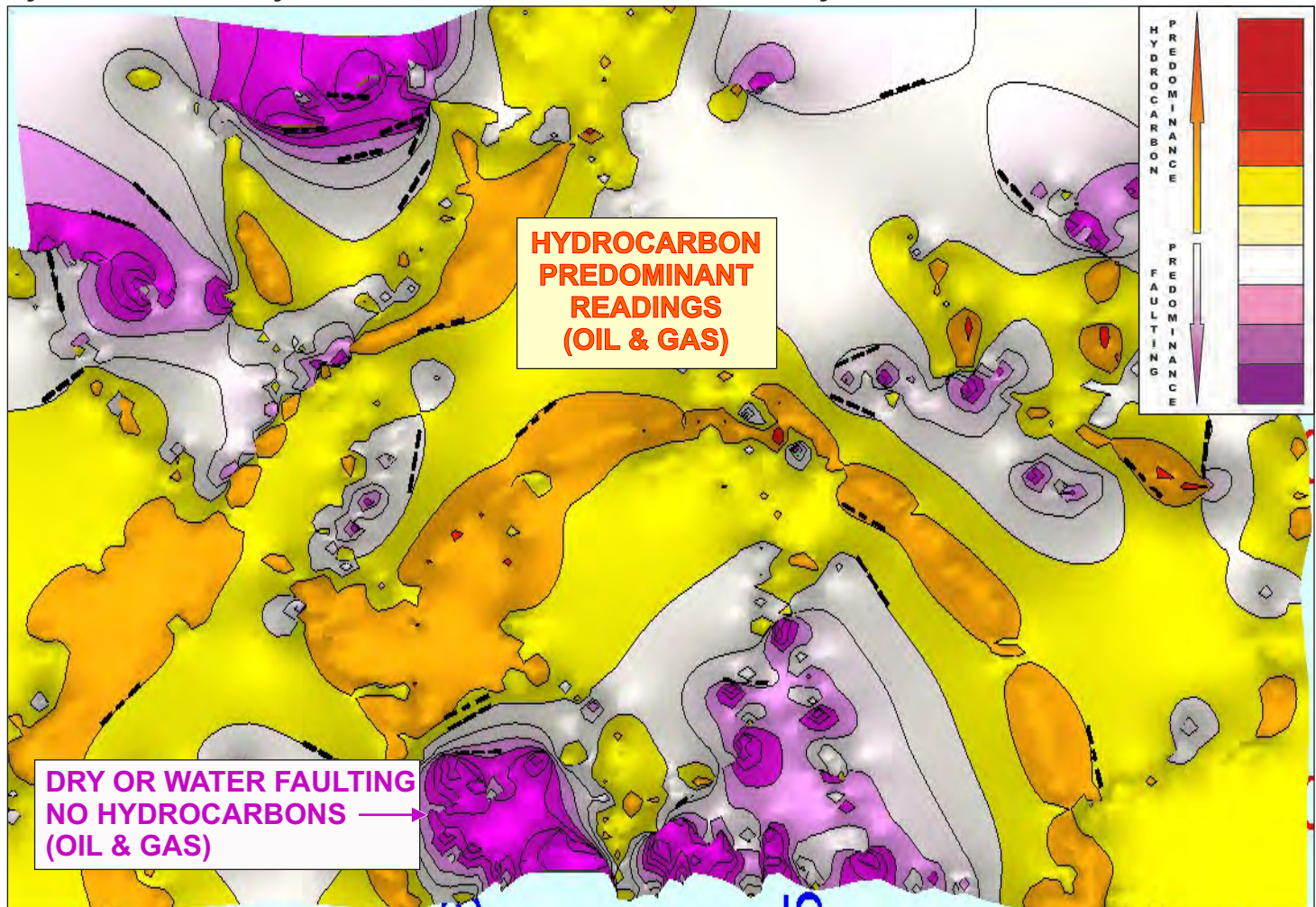


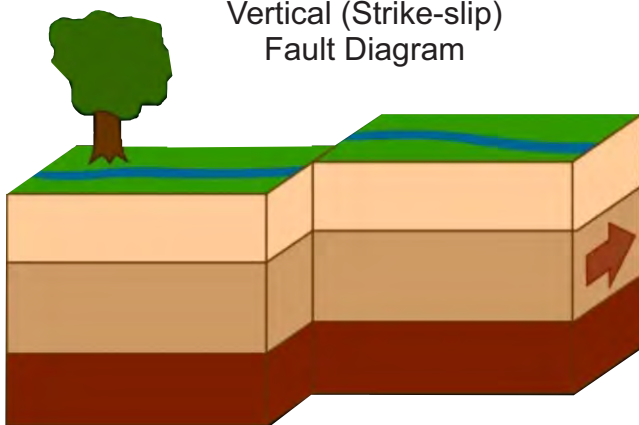
# Finding VERTICAL FAULTS with Hydrocarbon Surveys (HS)

1. HS system is very effective at locating vertical (slip-strike) faults.
2. It can determine if they are hydrocarbon bearing and the best place to drill wells, as well as where not to drill.
3. For building construction planning, HS can point out potential unstable areas associated with the vertical, slip-strike faults.

Hydrocarbon Surveys - Vertical Value View of an area surveyed in Texas.



Vertical (Strike-slip) Fault Diagram



**PATENT** US 10,761,237 B1 Sep. 1, 2020

**HydrocarbonSurveys.com**  
**C. Dave Copeland** - 512-917-7260 c  
Dave@CopelandResources.com  
CopelandResources.com

See additional sheets for system capabilities and design.

# FIND OIL & GAS with Hydrocarbon Surveys (HS)!

HYDROCARBON SURVEYS'S SYSTEM OFFERS POWERFUL AND INEXPENSIVE ENHANCEMENT TOOL FOR YOUR GEOLOGICAL & GEOPHYSICAL LINEUP

## HS SYSTEM WILL:

1. FIND HYDROCARBONS BELOW THE POINT OF MEASUREMENT.
2. FIND LATERAL EXTENT OF RESERVOIRS.
3. GIVE A RELATIVE STRENGTH READING FOR TOTAL RESERVOIR DENSITY.
4. GIVE A DISTINCT READING FOR NON-HYDROCARBON BEARING FAULTS.

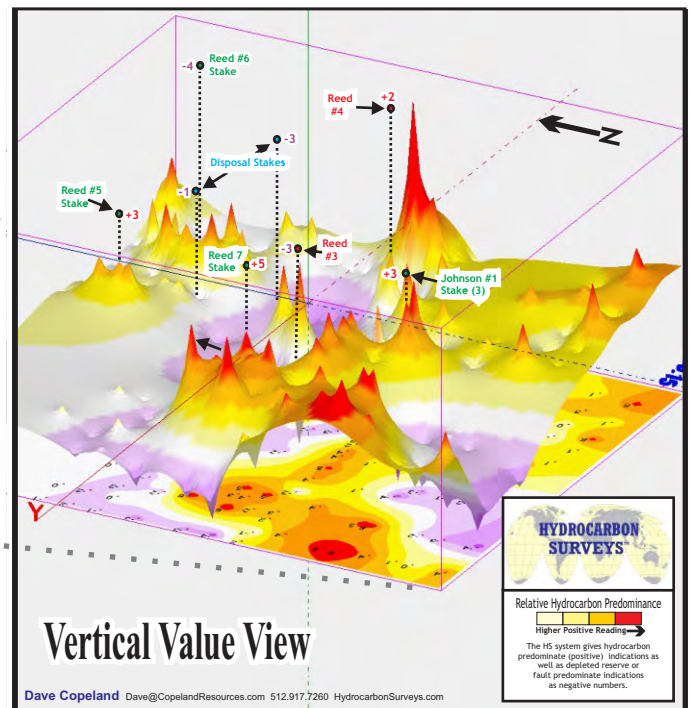
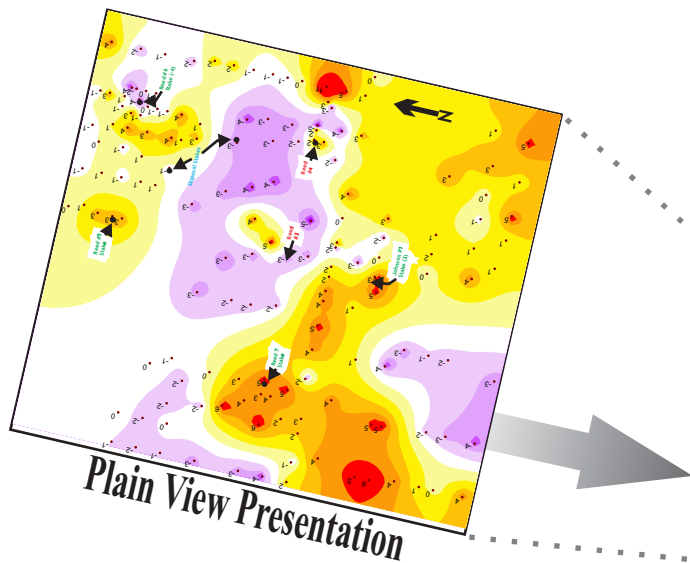
## HS SYSTEM APPLICATIONS:

LOW COST PROSPECTING FOR LEASING, NEW DRILLS, RE-COMPLETIONS, ETC.

**WATERFLOODS - DETERMINE FLOOD EFFICIENCY & AREAS TO IMPROVE DRAINAGE.**

The preference is to run a grid pattern with the HS monitoring system. A color coded relative value map is presented after the data is processed. In some cases the client procures a "Vertical Value View Presentation" as to the right. This visualization tool gives a clearer idea of the

relative values. HS's staff can work with the geological team to correlate the HS data with data from other sources. Data presentations can be overlaid on topographical, geological, etc. maps. This example is from a low density pattern.



## OUR SYSTEM UTILIZES A HYDROCARBON MONITORING SENSOR.

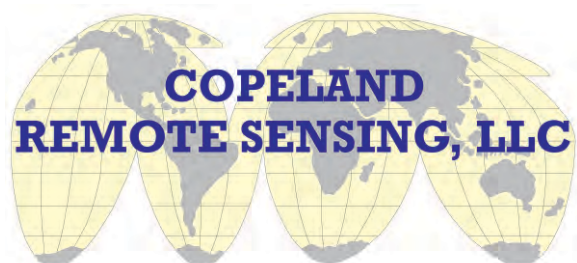
HS takes individual point measurements (requiring app. thirty seconds per point, plus travel time). Measurements can be taken over land or water and are adjusted for most roadways or other surface materials.

As readings are taken, the pattern and density for future readings can be adjusted on the fly to give greater detail to areas of interest. HS's real-time data acquisition versatility adds to its being a cost and time effective tool.

Data interpretation, mapping & presentation have a short turn around time and can be supplied in formats that can be imported by most mapping software.

See HS APPLICATION SHEETS & [HydrocarbonSurveys.com](http://HydrocarbonSurveys.com) for additional information.

**PATENT** US 10,761,237 B1 Sep. 1, 2020



**C. Dave Copeland** - 512-917-7260 c  
Dave@CopelandResources.com  
CopelandResources.com



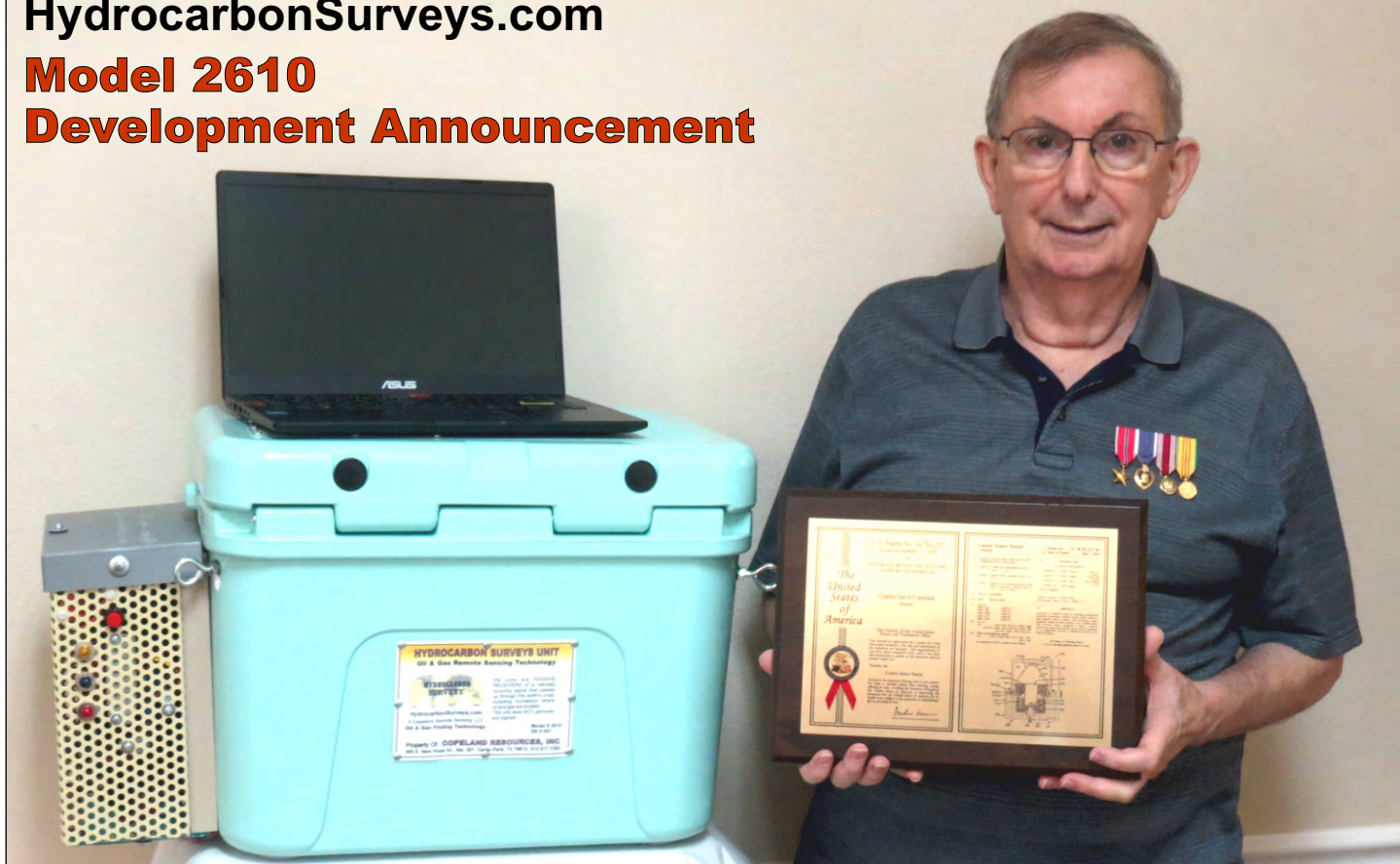
# Find MORE OIL & GAS with **HYDROCARBON SURVEYS (HS)**

A UNIQUE, PASSIVE OIL AND GAS  
REMOTE SENSING TECHNOLOGY

HydrocarbonSurveys.com

**Model 2610**

**Development Announcement**



(12) **United States Patent**  
Copeland

(10) **Patent No.:** US 10,761,237 B1

(45) **Date of Patent:** Sep. 1, 2020

**Hydrocarbon Surveys technology was invented and Patented by  
C. Dave Copeland, president of  
Copeland Resources, Inc. and Copeland Remote Sensing, LLC.**

The company has been actively involved in the development and funding of geological prospects since 1987 and continues to develop new capabilities to work within the petroleum industry.

Mr. Copeland is proud to have served our great country against the communist invasion of South Vietnam and was decorated with a **Bronze Star** for leadership under hostile conditions.

C. Dave Copeland 512.917.7260 [Dave@CopelandResources.com](mailto:Dave@CopelandResources.com)

**HydrocarbonSurveys.com**