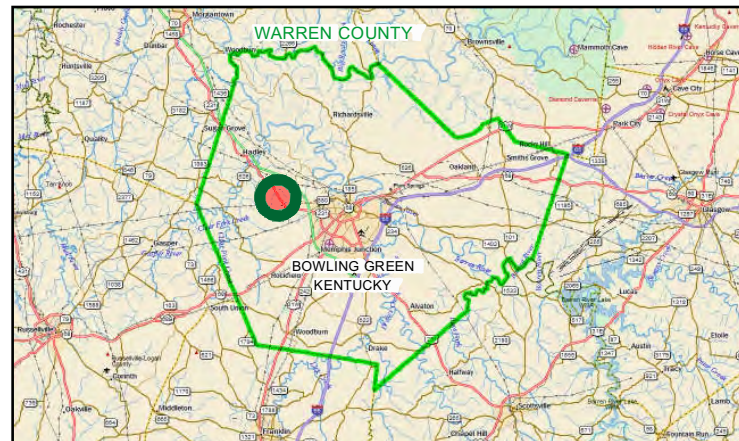
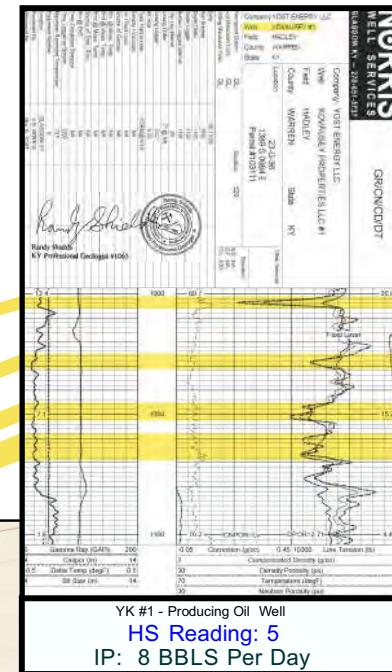
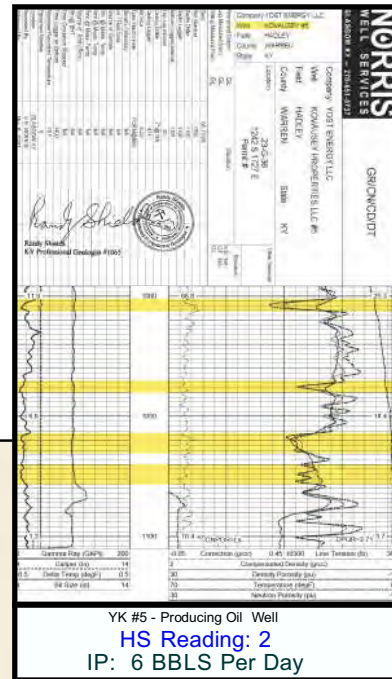


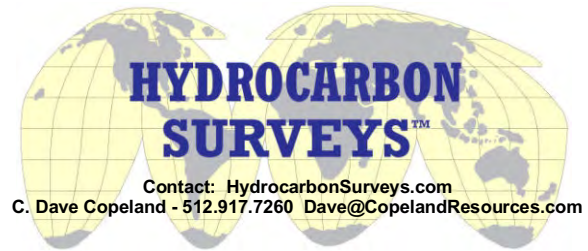
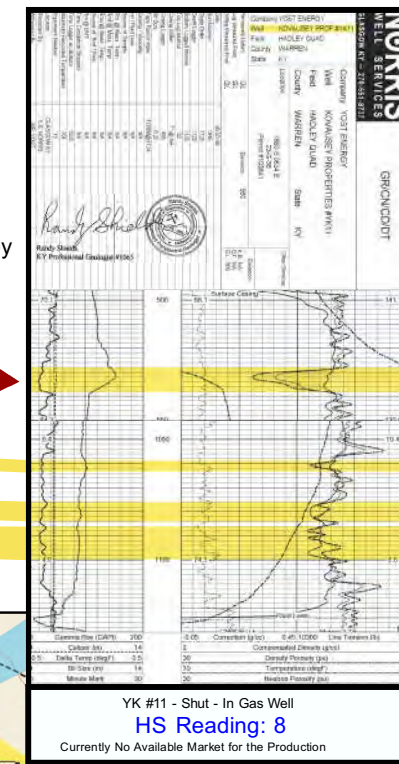
FINDING OIL & GAS WITH “HYDROCARBON SURVEYS”



Field Application Study - Lowe Lease, Warren County, KY

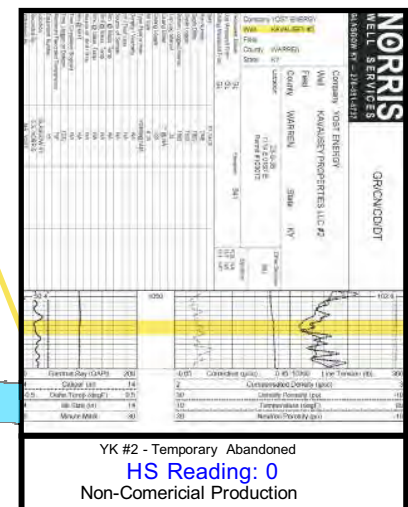
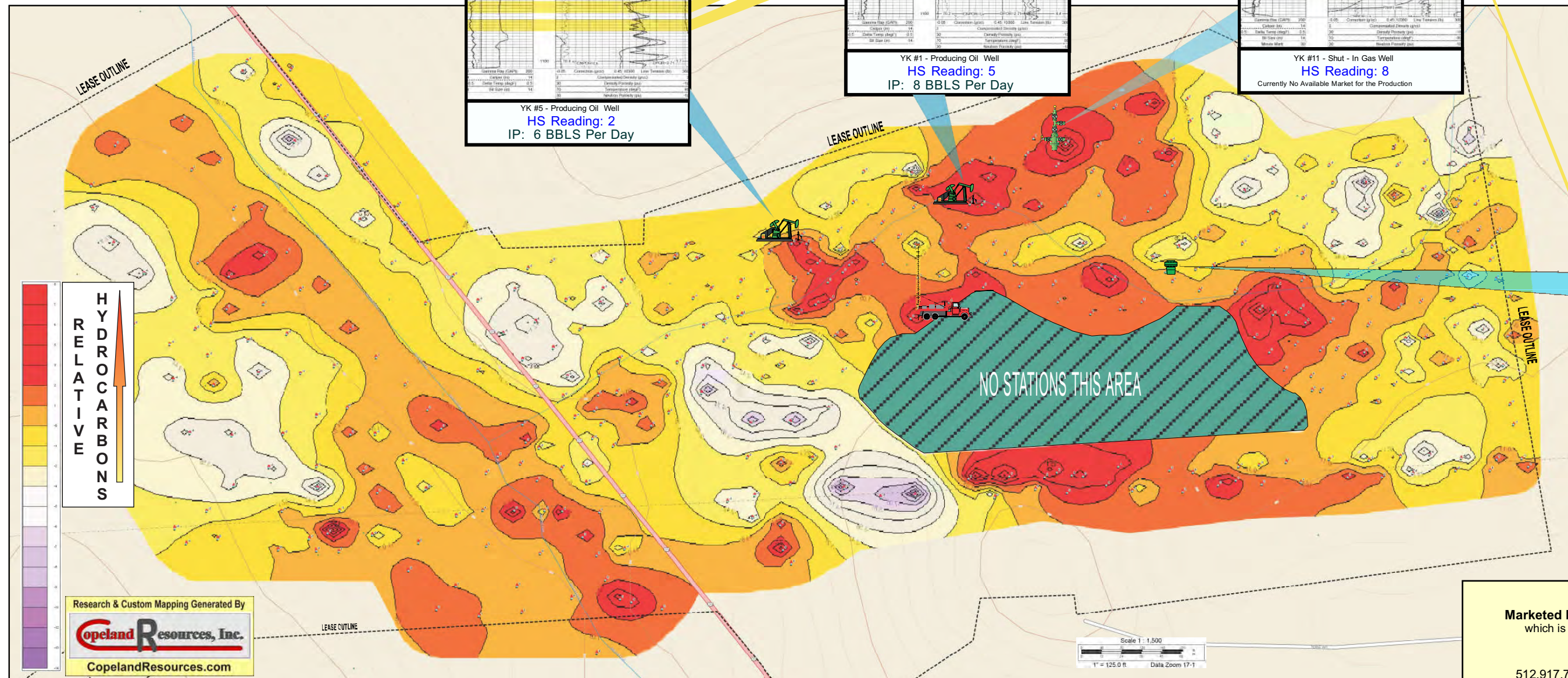


High Hydrocarbon Survey reading leads to **NEW GAS FIELD DISCOVERY**



RESULTS LOWE LEASE STUDY

- YK 5 - HS reading of 2, **IP 6 BOPD**
- YK 1 - HS reading of 5, **IP 8 BOPD**
- YK 11 - HS reading of 8, **New GAS FIELD**
- YK 2 - HS reading of 0, **DRY HOLE**
- YK 2 was drilled to test HS system negative validity.**
- YK 2 was on a good location according to radiometric readings.**



US PATENT
US 10,761,237 B1
 Issued Sep. 1, 2020

Hydrocarbon Surveys
 Marketed by Copeland Remote Sensing, LLC
 which is part of the Copeland companies group.
 HydrocarbonSurveys.com
C. Dave Copeland
 512.917.7260 Dave@CopelandResources.com