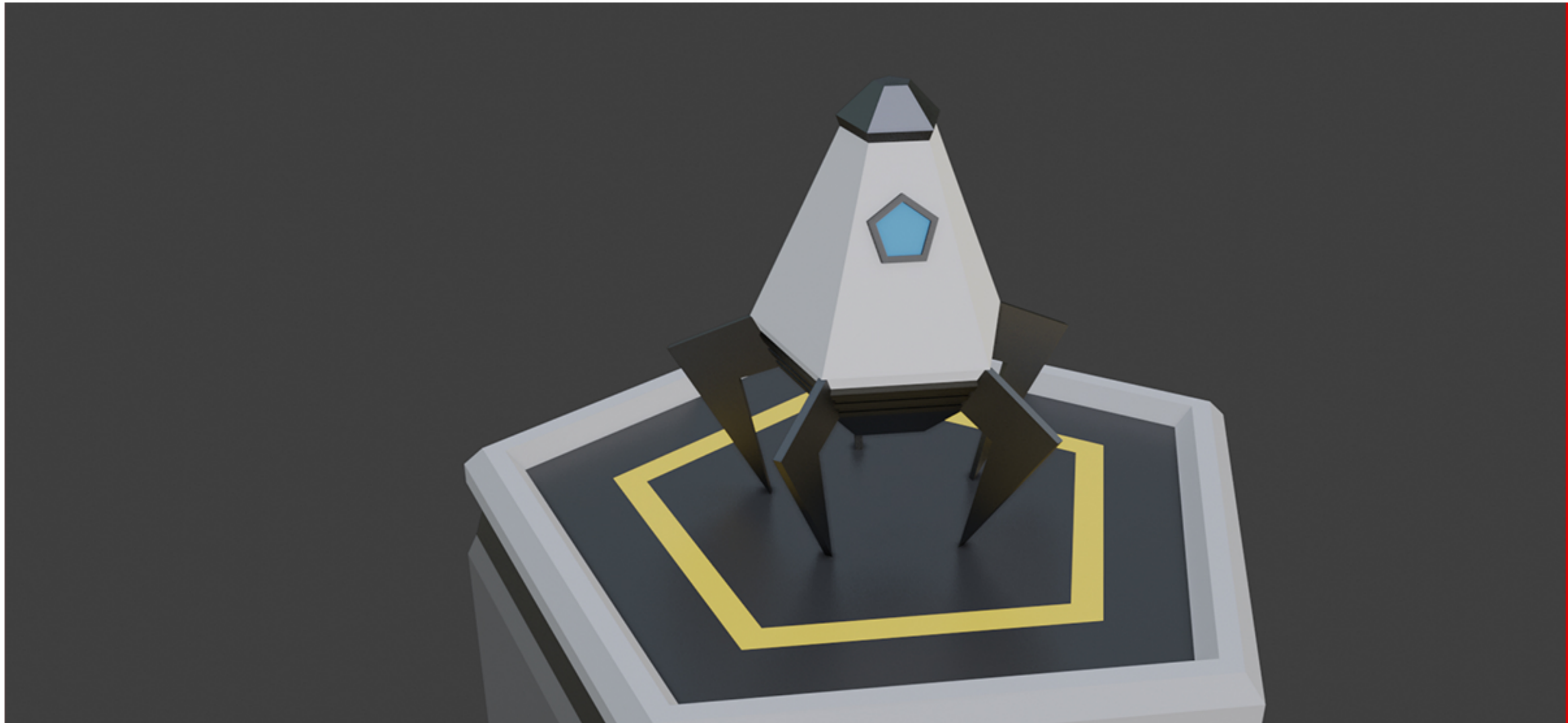


DESIGN & MOTION

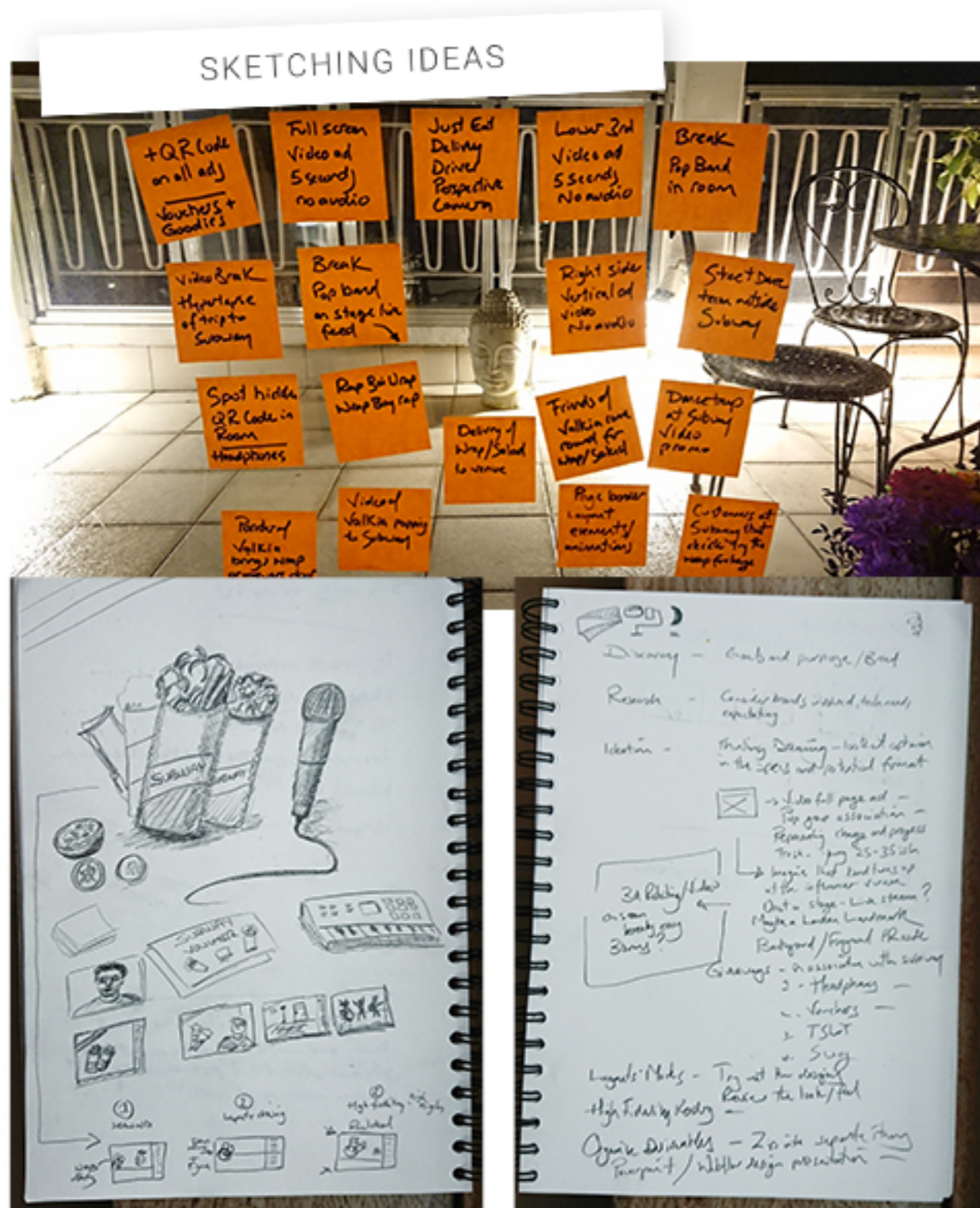
JOHN LEIGH

JOHN LEIGH
+44 7989856443
john@secret.studio
www.secret.studio



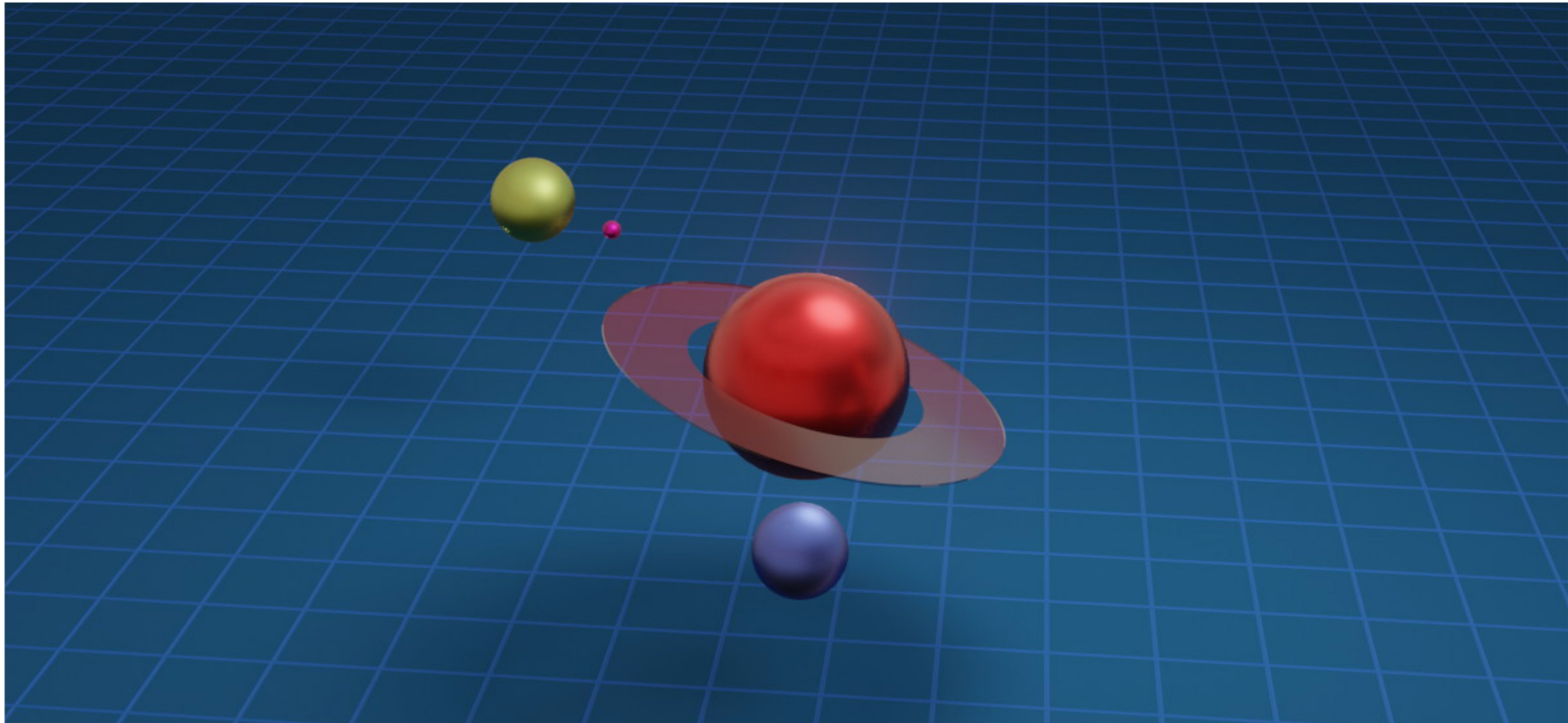
LOW POLY ROCKET 3D BUILD

Design and modelling of a 3D rocket in a low poly style and with the intention to animate, work in progress.
Created in Blender 3D.



TWITCH SUBWAY PROJECT

Working up designs and layouts for an ad concept for SUBWAY new menu - multiple iterations of layout ideas and branding. From sketches and post it notes to Figma high fidelity designs.



ANIMATED PLANETS

Working out some animation setups for a rotating planet scene with metallic glossy style materials and reflections.
Created in Blender.



THE HUB PROJECT

A commercial properties project that required photography, video and motion graphics work. Created with my DSLR camera, Drone, Google Maps, Photoshop and After Effects.



WEBSITE HEADER PROJECT

For my personal site I wanted a new header featuring a photorealistic 3D scene, I chose bottle caps and business card. Designed and built using Blender for modelling, texturing, lighting, rendering and animation.

LONDON UNDERGROUND LIPS CONCEPT

An illustration concept project with a play on the London Underground logo as lips.
Created as vector art in Figma.

DESIGN PROCESS



© JOHN LEIGH

| www.secret.studio

| john@secret.studio

ILLUSTRATION ART

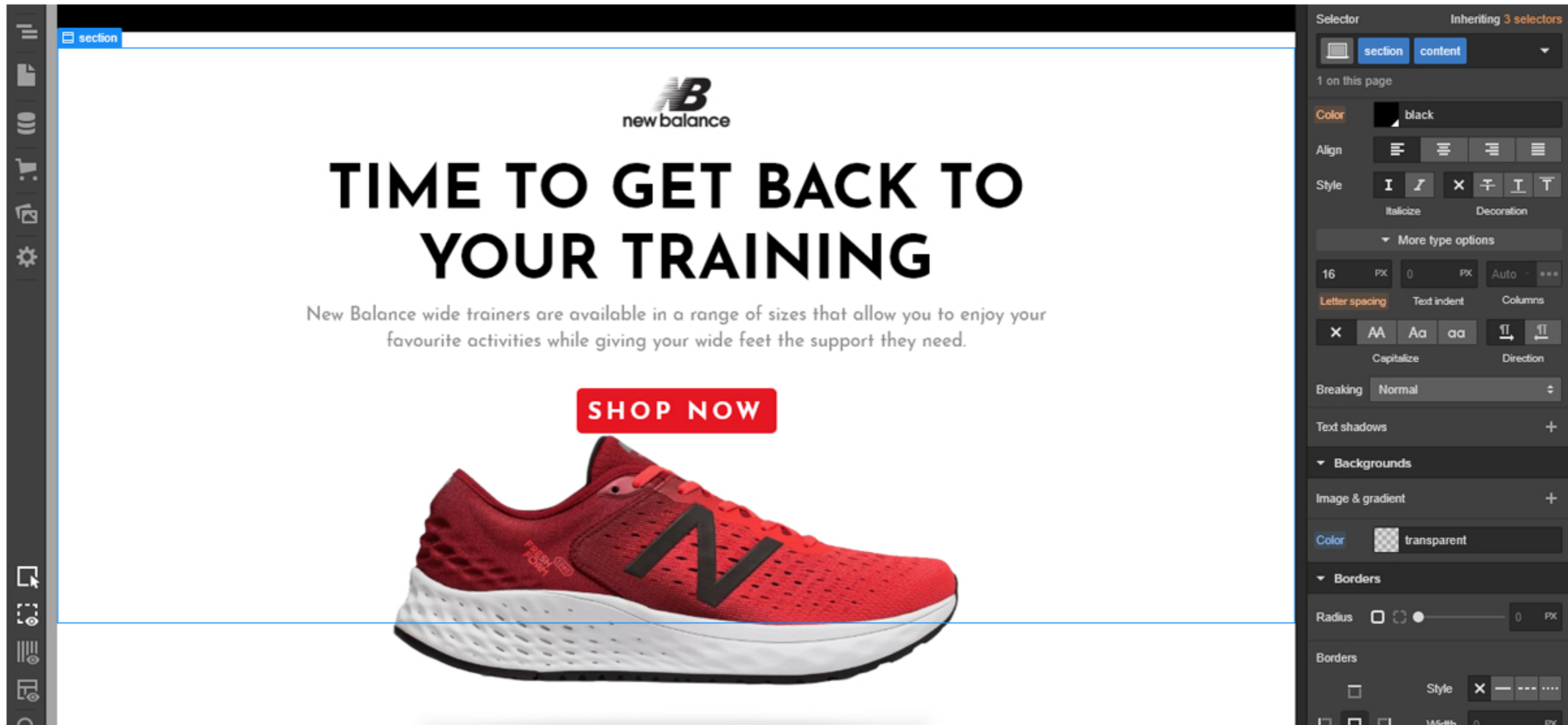
London Underground logo re-imagined for this fantasy piece of illustration work.
Avoided Illustrator and Inkscape in favour of using Figma for all artwork on the project.



PRODUCT SHOT IN 3D

Created a photorealistic rendering of a skincare product.

Designed and built using Blender for modelling, texturing, lighting, rendering and animation, plus Figma for graphics.



NEW BALANCE LANDING PAGE

Taking a leap in Web Design by skipping the usual design and layout phases in Photoshop or Figma and building and designing at once. Created using Webflow.

JOHN LEIGH



JOHN LEIGH

+44 7989856443



john@secret.studio



www.secret.studio