



Waterproof and spray-applied membrane
made of recycled rubber

MAP / MAP-F



MAP / MAP-F



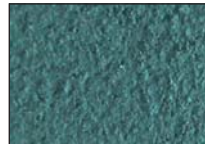
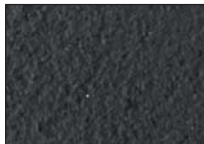
MAP is a spray-applied waterproof membrane made of recycled rubber particles bound together with additives for waterproofing roofs and façades.

Under request, a MAP-F version that has been specifically formulated to withstand extreme cold temperatures, can be supplied.



SPECIFICATIONS

- Range of colours available (black, anthracite, green and terracotta).



- Several textures available.
- Certified Water-tightness. Test carried out by ENAC European Accredited Laboratory.

APPLICATIONS

- Waterproof membrane for flat roofs and terraces:
MAP waterproof membrane can be left without protection because it is ultraviolet sunlight resistant (industrial roofs, warehouses, flat roofs, etc).
It can also be coated with quartz floor STONE VIPEQ.
On roofs that are severely exposed to sunlight, MAP membrane can be insulated with Spray Cork VIPEQ F10.
- This waterproof and spray-applied membrane can be covered with concrete floors, ceramic floors or similar. A geotextile fabric might be necessary as a separating layer.
- It can also be applied as a waterproof membrane on pitched roofs, fiber cement panels, steel sheets, etc.
- As a repairing product for damaged asphalt membranes, cracked or worn out by sunlight.
- As a repairing product for bands between slopes, or similar.
- Waterproofing and steam barrier on walls.

CHARACTERISTICS

- Considering a 3 mm. thick membrane made in two layers, the estimated performance of MAP is 3 kg/m².
- MAP must be applied in layers up to 1-1.5 mm. thick. Each layer must be dry before application of the next layer, and drying times must be observed.
- Spray-applied, flexible and seamless membrane stuck to the substrate. As a result, leakage risk is reduced due to incorrect jointing.
- UV solar beams-resistant.
- Under low-temperature exposure the membrane remains flexible and stretchable without cracking.
- Higher softening-temperature point.
- Self-extinguishable fire performance, Broof. It does not carry flame or combustion.
- It is non-slippery. Class 3 according to CTE-DB SUA.
- There is no need to handle heavy membrane rolls on fall risk areas.
- Its adherence to the substrate improves the membrane rip resistance.

PACKAGING

15 kg. plastic pail. 540 kg pallet (36 pails).

Request official samples

