

**Tune-up and Tube Steak  
Saturday, April 22, 2023  
11:00 a.m.**

**Tim Granowitz Pavillion at John Prince Park**

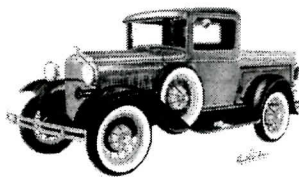
**The nearest entrance to the pavillion is 4759 South Congress Avenue in Lake Worth. It's located between Lantana Road and 6<sup>th</sup> Avenue on the east side of the road just north of JFK Hospital (south entrance). From South Congress Avenue, take Prince Drive and follow the signs to the Tim Granowitz Pavillion.**

The club will provide hot dogs, hamburgers, rolls, condiments and tablecloths. The club will also be providing some cold bottled water, but feel free to bring your own cooler with drinks. Rick Klotz will be our master griller.

We are asking members to please bring a covered dish.

- If your last name starts with A through M, we kindly ask that you bring an appetizer.
- If your last name starts with N through Z, we kindly ask that you bring a dessert.

RSVP to Karen Klotz via email [certifiedreporting@gmail.com](mailto:certifiedreporting@gmail.com) or text 561-385-1944



**Accommodations:**

- Restrooms are nearby. There is ample parking, picnic tables, electrical outlets, charcoal grill, and a water spigot.

Tim Granitz  
Pavillion

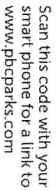
(Continues on reverse side)

Access to 1-95



Revised July 2021

Stay connected with us!



You'll need a free reader. Download it from your app store or marketplace. Search: QR Reader

to C

- 4759 South Congress Avenue, Lake Worth, Florida

- 2700 6th Avenue South
- Campground: 4759 South Congress Avenue
- 2520 Lake Worth Road
- Golf learning center: 4754 South Congress Avenue

- Website: [www.pbcparks.com](http://www.pbcparks.com)

- Email: [pbcparks@pbcgov.org](mailto:pbcparks@pbcgov.org)
- Campground: (561) 582-7992
- Golf learning center: (561) 966-6666
- Picnic pavilion rental: (561) 966-6611
- Park Ranger Supervisor: (561) 252-1714



## ATTRactions

## ATTRactions

- Memorial tree court .....
- Golf learning center .....
- Administrative offices .....

## FACILITIES

- Entrance/exit .....
- Parking .....
- Restrooms .....
- Drinking fountains .....

**PICNIC AREA**

- Family picnic table(s) .....

## RENTAL FACILITIES

- Center Drive Pavilion .....
- Smythe Pavilion .....
- Tim Granowitz Pavilion ....

## PLAY AREAS

- Playground ..... 

## SPORTS

- Volleyball court .....
- Petanque .....
- Fitness zone exercise .....

## TRAILS/PATHS

- Multipurpose path (paved)
- Fitness trail, (soft 1.1 mi) ...
- Wheelchair course ...
- Self-guided trail ...

### WATER AMENITIES

- Fishing pier .....
- Boat ramp .....

