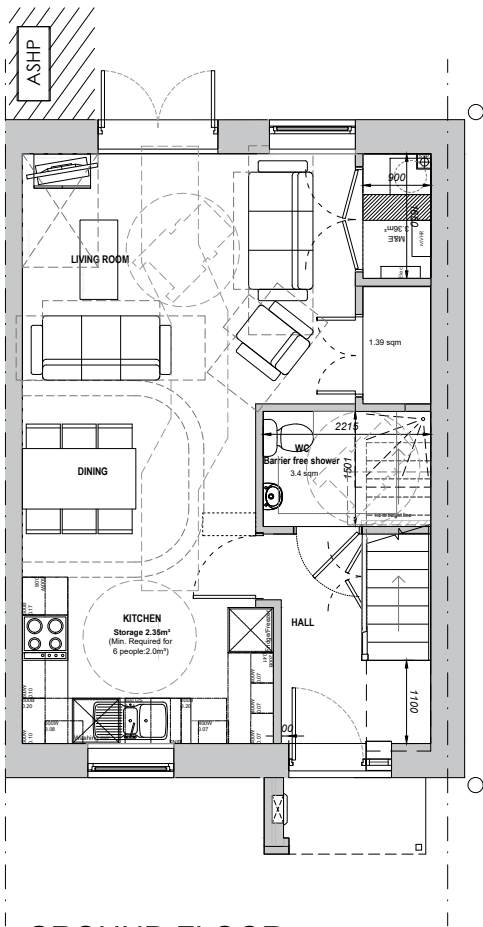


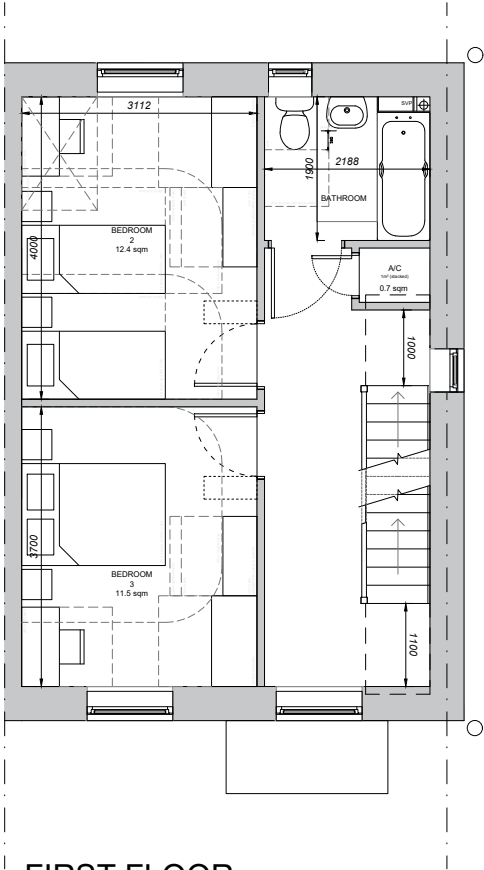
HT D: PLOTS:
AS: 7

Gross Area 6P3B Housetype = 106 m2
Includes stairs area on all levels
General Storage = 3.1 m2 (Min General Storage
required: 3m2)

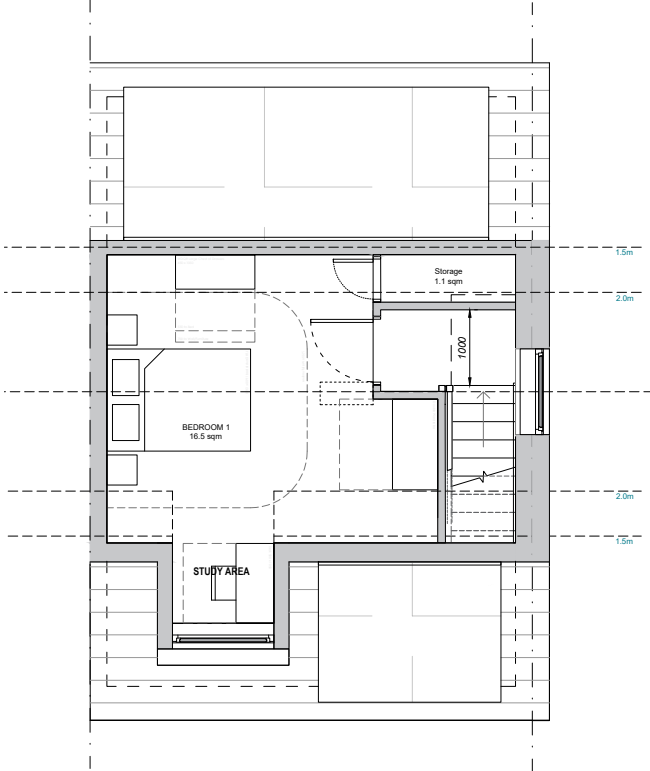
Minimum Ceiling Height = 2.3m



GROUND FLOOR



FIRST FLOOR



SECOND FLOOR



Figured dimensions and levels to be used. Any inaccuracies must be notified to the architect. Detail drawings and large scale drawings take precedence over smaller drawings.

THIS DRAWING IS COPYRIGHT ©

Rev: A	Layout amended to straight run of stairs, consequent changes to layout including stores and front door position. Amendments to platform lift position. 29.07.24 RF
B	Section provided (indicative furniture included); A wheelchair turning circle has been included in the ground floor WC to show the area for maneuvering. Dormer has been redesigned 29.08.24. RF

Rev: C	Storage Added under GF stairs, desk moved on 2F. Airing Cupboard on 1F reduced to increase stair landing. 09.09.24 TP
D	Living room and GF bathroom and storage rearranged to Include study space. Storage added on 1F to accommodate. 15.10.2024 TP
E	Reverted to REV C layout at GF and 1F. Study Area added in 2F Bedroom 25.10.2024 TP

Rev:	

PRELIMINARY	
PLANNING	✓
DESIGN	
TENDER	
CONSTRUCTION	

powelldobson
ARCHITECTS

Cardiff Office: Suite 1F, Building One, Eastern Business Park, Wern Fawr Lane, Old St Mellons, Cardiff CF3 5EA
Tel: +44 (0)33 33 201 001 Fax: +44 (0)29 2079 1212 email: cardiff@powelldobson.com

Contract: Cardiff Council, Cardiff 3 Sites
New Pennsylvania
Title: House Type D - 6P3B

Drawing No. 22007 (05) 134
Rev. E
Scale: 1: 50 @ A3
Date: 29 07 2024
Drawn: RF
Checked: SI