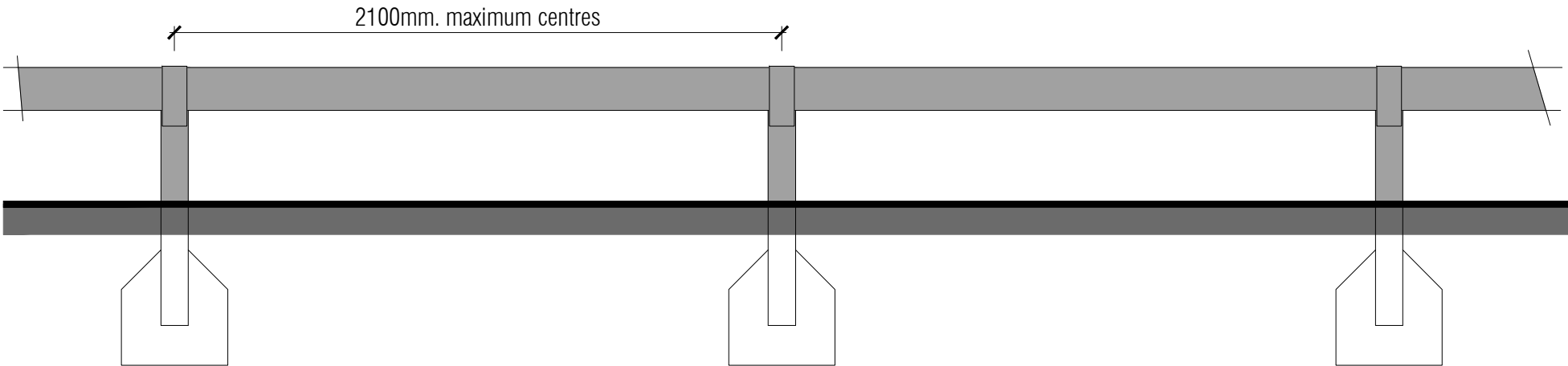


TYPICAL SECTION



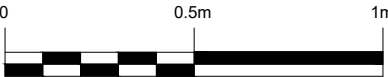
ELEVATION

BOUNDARY TYPE D
450mm high Timber Knee Rail

Ref. 24040 (05) 109 -
Boundary Treatments Layout

SPECIFICATION :

Posts: 100mm x 100mm Pressure treated timber.
Horizontal Rails: 100mm x 100mm Pressure treated birdsmouth fixed onto posts with galvanised metal straps.



Scale @ 1:20

Figured dimensions and levels to be used.
Any inaccuracies must be notified to the architect.
Detail drawings and large scale drawings take precedence over smaller drawings.

Rev:

Rev:

Rev:

Rev:

PRELIMINARY	
PLANNING	✓
DESIGN	
TENDER	
CONSTRUCTION	

powelldobson
ARCHITECTS

Cardiff Office: Suite 1F, Building One, Eastern Business Park, Wern Fawr Lane, Old St Mellons, Cardiff CF3 5EA
Tel: +44 (0)33 33 201 001 Fax: +44 (0)29 2079 1212 email: cardiff@powelldobson.com

Contract: **Cardiff Council**
Wolf's Castle, Llanishen

Title: **Boundary Treatment Detail - Type D**

Drawing No. Rev.
24040 (05) 153

Scale: 1: 20 @ A3
Date: Dec 2025
Drawn: AJC
Checked: