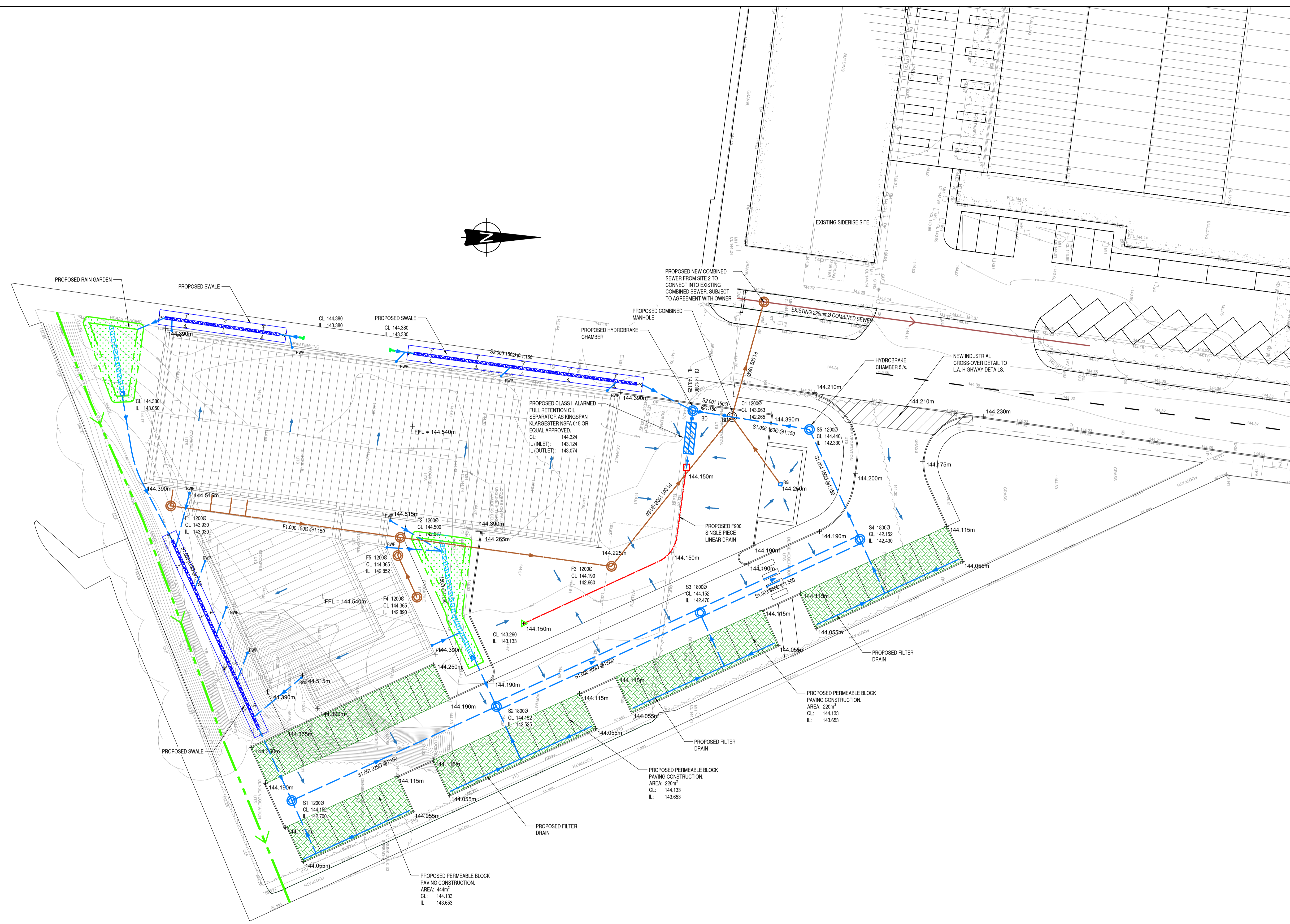


NOTE THE PROPERTY OF THIS DRAWING AND DESIGN IS VESTED IN BINGHAM HALL PARTNERSHIP LIMITED AND MUST NOT BE COPIED OR REPRODUCED IN ANY WAY WITHOUT THEIR WRITTEN CONSENT



LEGEND

- PROPOSED SURFACE WATER DRAINAGE, 150mmØ UNO
- PROPOSED FOUL WATER DRAINAGE, 100mmØ UNO
- EXISTING COMBINED WATER DRAINAGE
- PROPOSED SURFACE WATER INSPECTION CHAMBER
- PROPOSED FOUL WATER INSPECTION CHAMBER
- PROPOSED RODDING EYE
- PROPOSED PERMEABLE BLOCK PAVING (NO INFILTRATION TO GROUND), SEE DETAIL
- PROPOSED RAIN GARDEN WITH FILTER DRAIN AND HIGH LEVEL GULLY OUTLET (NO INFILTRATION TO GROUND)
- PROPOSED SINGLE-PIECE F900 LINEAR DRAINAGE CHANNEL
- PROPOSED SINGLE-PIECE D400 LINEAR DRAINAGE CHANNEL ACCESS CHAMBER
- PROPOSED SINGLE-PIECE D400 LINEAR DRAINAGE CHANNEL SLUMPED OUTLET CHAMBER
- PROPOSED RAIN WATER PIPES
- PROPOSED TRAPPED ROAD GULLY
- PROPOSED YARD GULLY
- PROPOSED OVERLAND SURFACE WATER FLOW ROUTES

Rev	By	Date	Revision
P02	DB	28/05/2021	REVISED TO UPDATED LAYOUT
P01	MPC	4/05/2021	REVISED LAYOUT

Bingham Hall
PARTNERSHIP LTD

Consulting Civil & Structural Engineers
5 Ty-Nant Court
Morganstown
Cardiff
CF15 5LW
Telephone (029) 2048 8588

Project Title
PROJECT "DRAIG TAN", SIDERISE, FORGE INDUSTRIAL ESTATE, MAESTEG.

Drawing Title
PROPOSED DRAINAGE - SITE 2

Drawing Status
FOR COMMENT

Architect
ORIEL DESIGN LIMITED

Client
SIDERISE GROUP

Scale	Drawn	Drawing Size	Date	Checked
1:250	MPC	A1	APR 21	DTH

Project No. - Originator - Volume - Level - Type - Role - Number
6713 - BHP - XX - XX - DR - C - (50)001

Rev
P02