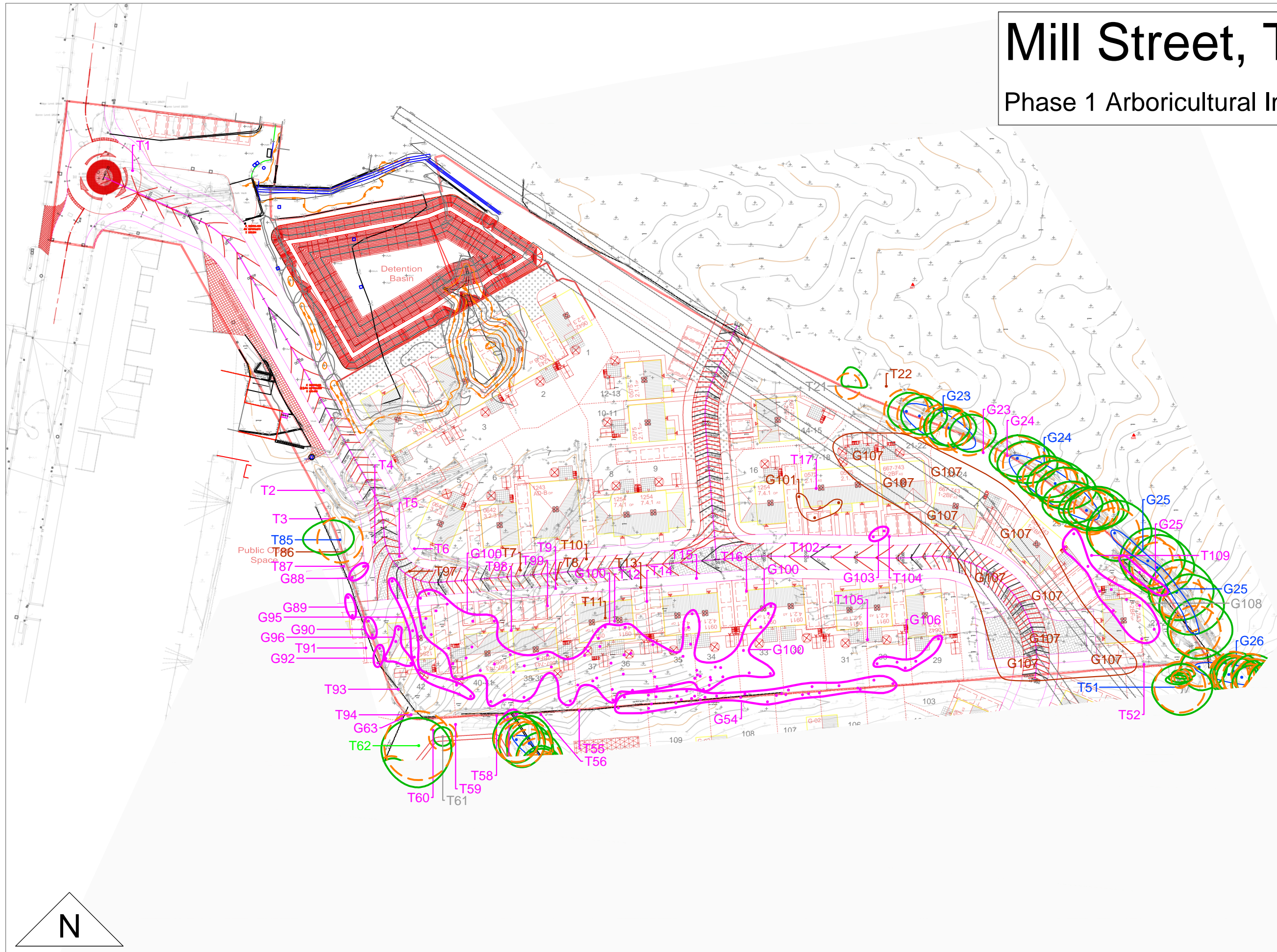


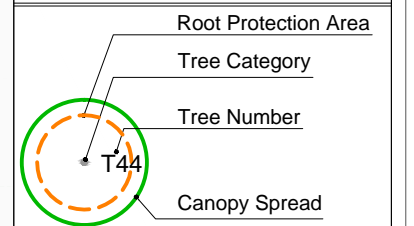
Mill Street, Tonyrefail

Phase 1 Arboricultural Impact Assessment



10m

Arboricultural Impact Assessment



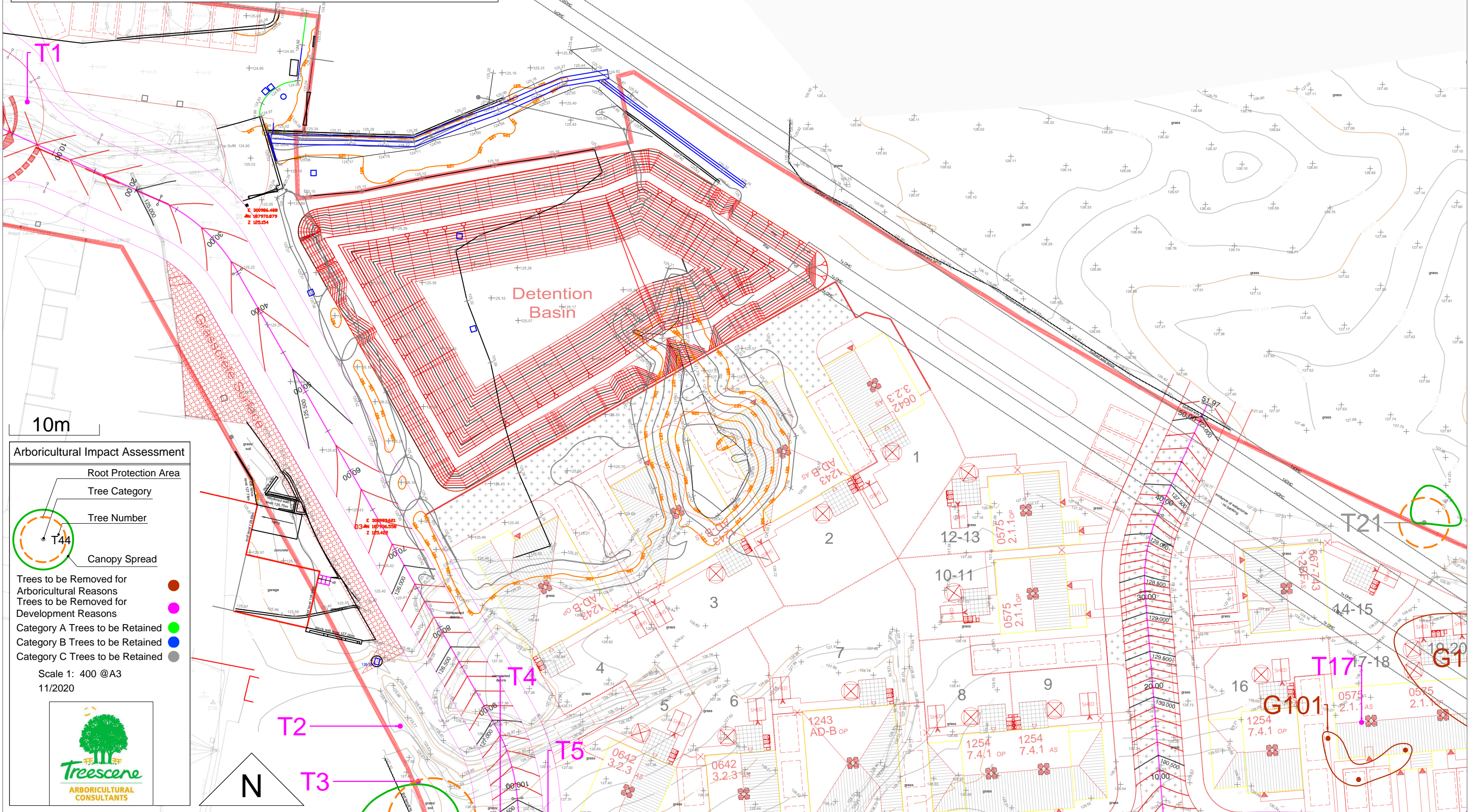
- Trees to be Removed for Arboricultural Reasons: Red circle
- Trees to be Removed for Development Reasons: Magenta circle
- Category A Trees to be Retained: Green circle
- Category B Trees to be Retained: Blue circle
- Category C Trees to be Retained: Grey circle

Scale 1: 800 @A3
11/2020



Mill Street, Tonyrefail

Phase 1 Arboricultural Impact Assessment



Arboricultural Impact Assessment

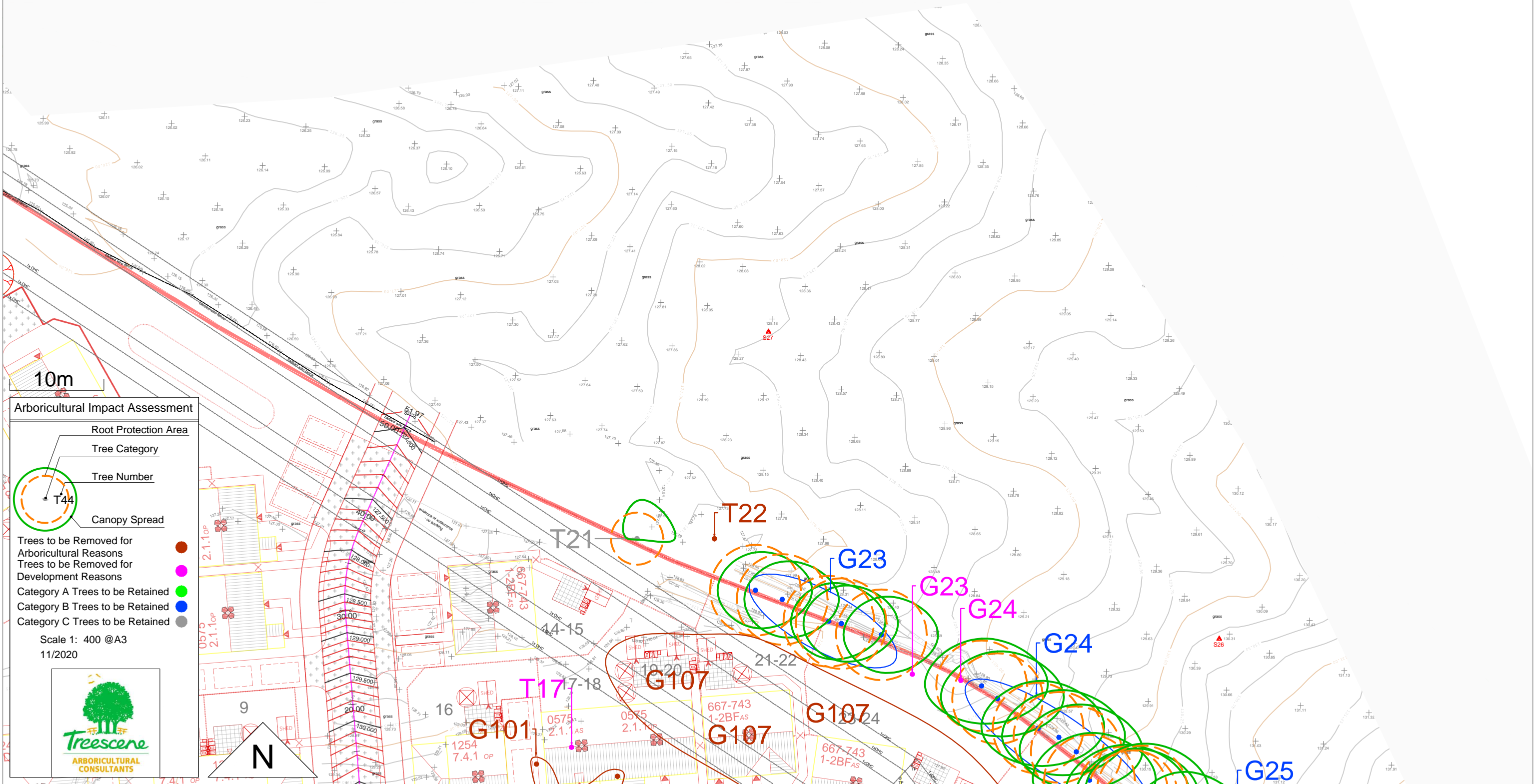
- Root Protection Area
- Tree Category
- Tree Number
- Canopy Spread
- Trees to be Removed for Arboricultural Reasons
- Trees to be Removed for Development Reasons
- Category A Trees to be Retained
- Category B Trees to be Retained
- Category C Trees to be Retained

Scale 1: 400 @A3
11/2020

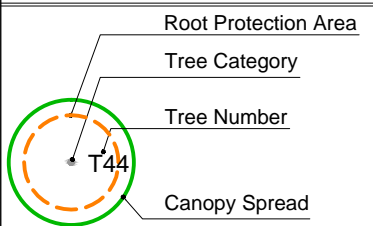


Mill Street, Tonyrefail

Phase 1 Arboricultural Impact Assessment



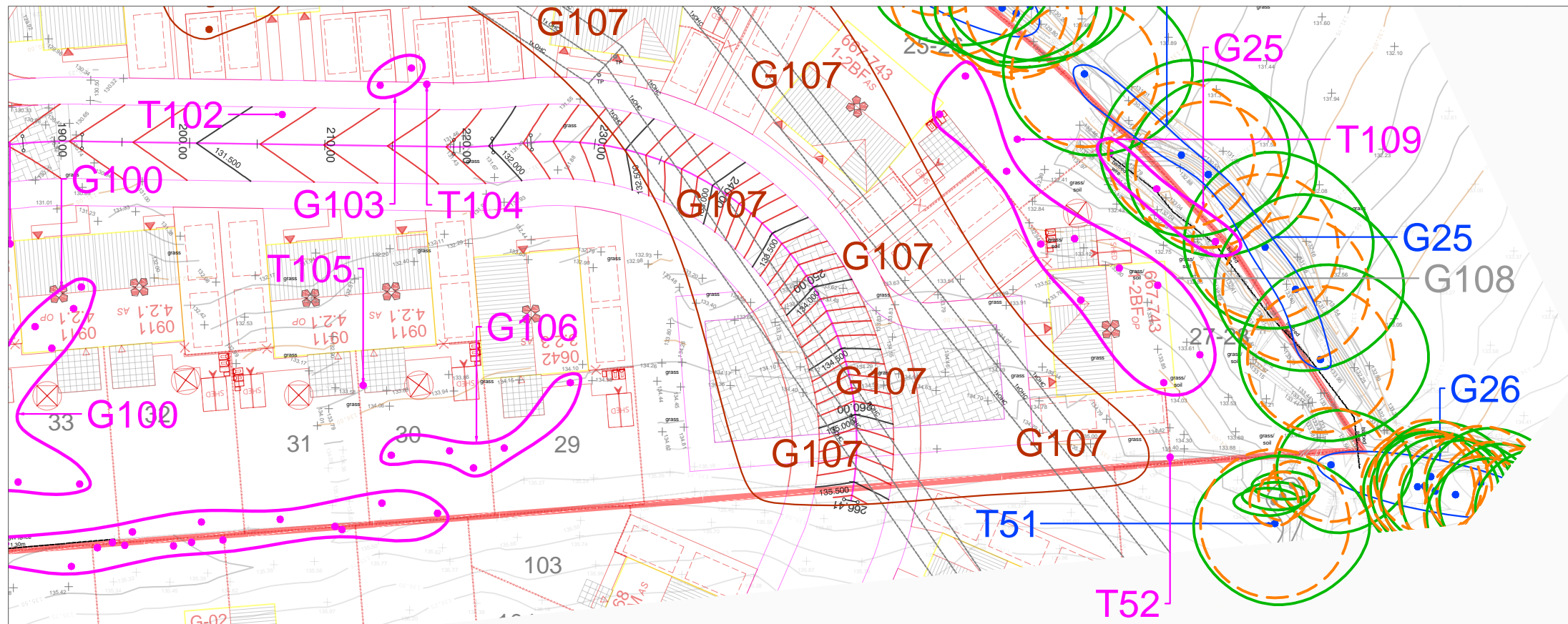
Arboricultural Impact Assessment



- Trees to be Removed for Arboricultural Reasons: Red circle
- Trees to be Removed for Development Reasons: Pink circle
- Category A Trees to be Retained: Green circle
- Category B Trees to be Retained: Blue circle
- Category C Trees to be Retained: Grey circle

Scale 1: 400 @A3
11/2020





Mill Street, Tonyrefail

Phase 1 Arboricultural Impact Assessment

10m

Arboricultural Impact Assessment

- Root Protection Area
- Tree Category
- Tree Number
- Canopy Spread

- Trees to be Removed for Arboricultural Reasons ●
- Trees to be Removed for Development Reasons ●
- Category A Trees to be Retained ●
- Category B Trees to be Retained ●
- Category C Trees to be Retained ●

Scale 1: 400 @A3
11/2020

