



THIS DRAWING IS COPYRIGHT © CAMBRIA CONSULTING LTD.

DO NOT SCALE FROM THIS DRAWING.

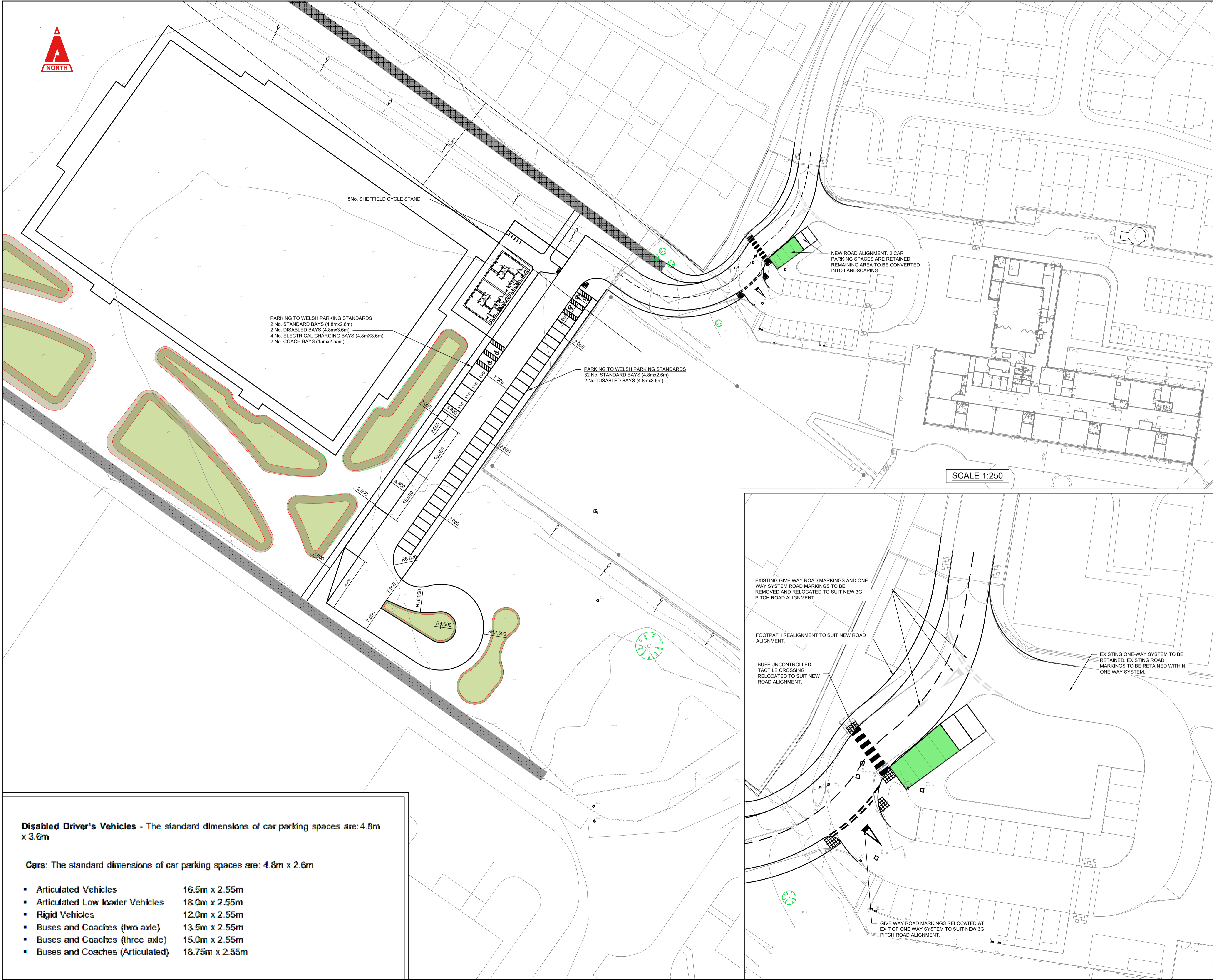
CONTRACTORS MUST CHECK ALL DIMENSIONS ON SITE. ONLY FIGURED DIMENSIONS ARE TO BE WORKED FROM. DISCREPANCIES MUST BE REPORTED IMMEDIATELY TO CAMBRIA CONSULTING LIMITED BEFORE PROCEEDING.

THE CONTRACTOR IS TO REFER TO THE SPECIFICATION, FULL SCHEDULE OF RESIDUAL RISKS IN THE CONTRACT DOCUMENTATION AND ALSO TO INFORMATION FROM OTHER DESIGNERS, IN PARTICULAR THE M&E CONSULTANT REGARDING EXISTING LIVE SERVICES.

THIS SYMBOL IS USED TO HIGHLIGHT INSTANCES OF RISK WITHIN THE CONSTRUCTION PROCESS. ALWAYS CHECK FOR LATER REVISIONS OF THIS DRAWING.

- NOTES:
1. EXTENT OF SERVICE DIVERSIONS TO BE CONFIRMED.
 2. TOPOGRAPHICAL SURVEY REQUIRED TO CAPTURE WORKS WITHIN SCHOOL AREA.

- KEY:
- POTENTIAL SUDS FEATURE
 - SUDS FEATURE



Disabled Driver's Vehicles - The standard dimensions of car parking spaces are: 4.8m x 3.6m

Cars: The standard dimensions of car parking spaces are: 4.8m x 2.6m

▪ Articulated Vehicles	16.5m x 2.55m
▪ Articulated Low loader Vehicles	18.0m x 2.55m
▪ Rigid Vehicles	12.0m x 2.55m
▪ Buses and Coaches (two axle)	13.5m x 2.55m
▪ Buses and Coaches (three axle)	15.0m x 2.55m
▪ Buses and Coaches (Articulated)	18.75m x 2.55m

P04	ISSUED FOR PAC.	DC	BW	BW	01/06/23
P03	ROAD REALIGNMENT. ADDITIONAL PARKING SPACE ADDED.	DC	BW	BW	12/05/23
P02	REMOVAL OF ONE PARKING SPACE.	DC	BW	BW	09/05/23
P01	ISSUED FOR COORDINATION.	DC	BW	BW	05/04/23
Rev.	Description	By	Chk	App	



Client:
LLANTARMAN PRIMARY 3G PITCH

Drawing Title:
HIGHWAY & PARKING GENERAL ARRANGEMENT

Drawing No.
CC2508 CAM XX XX DR C 0700

Project	Originator	Vol.	Level	Type	Role	Number
S2	PRELIMINARY		1:500			P04

CAMBRIA
Constructive Thinking

Civil & Structural Engineers
Cambria House
16 Plas St. Pl de Leon
Penarth Marina
Cardiff, CF64 1TR

T 029 2099 3333
E admin@cambria.co.uk
W www.cambria.co.uk
@cambriauk
uk.linkedin.com/in/cambria