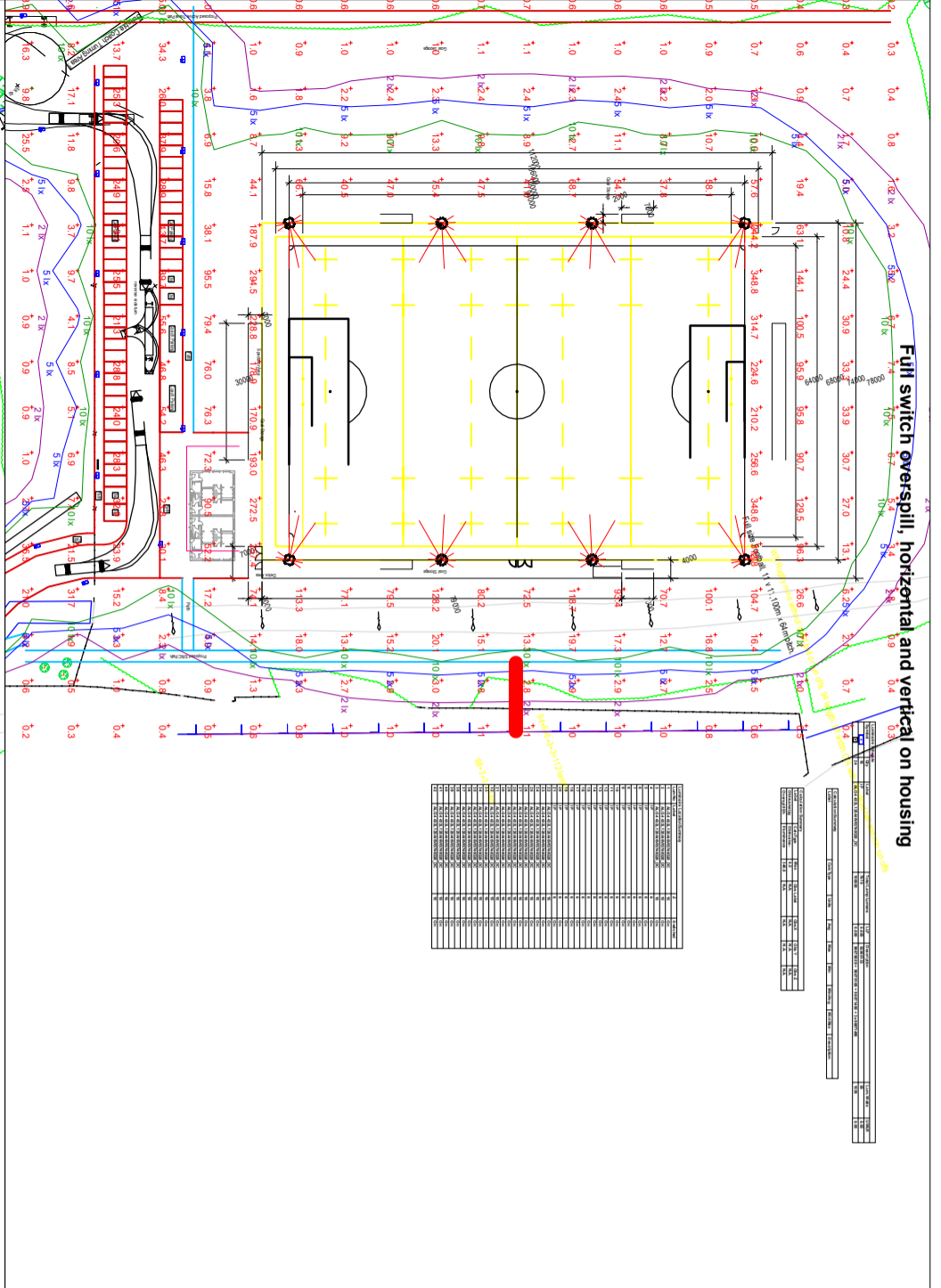
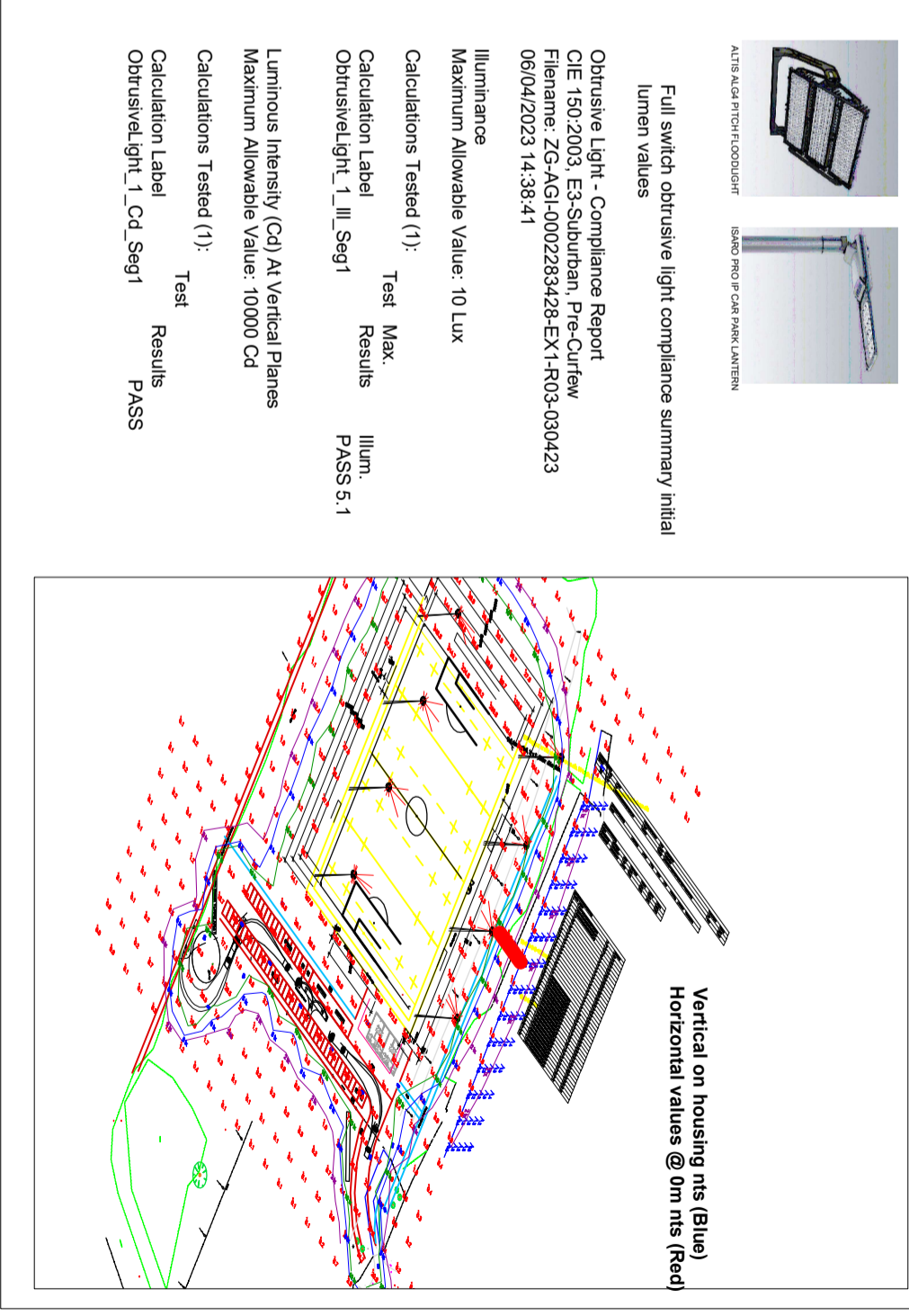
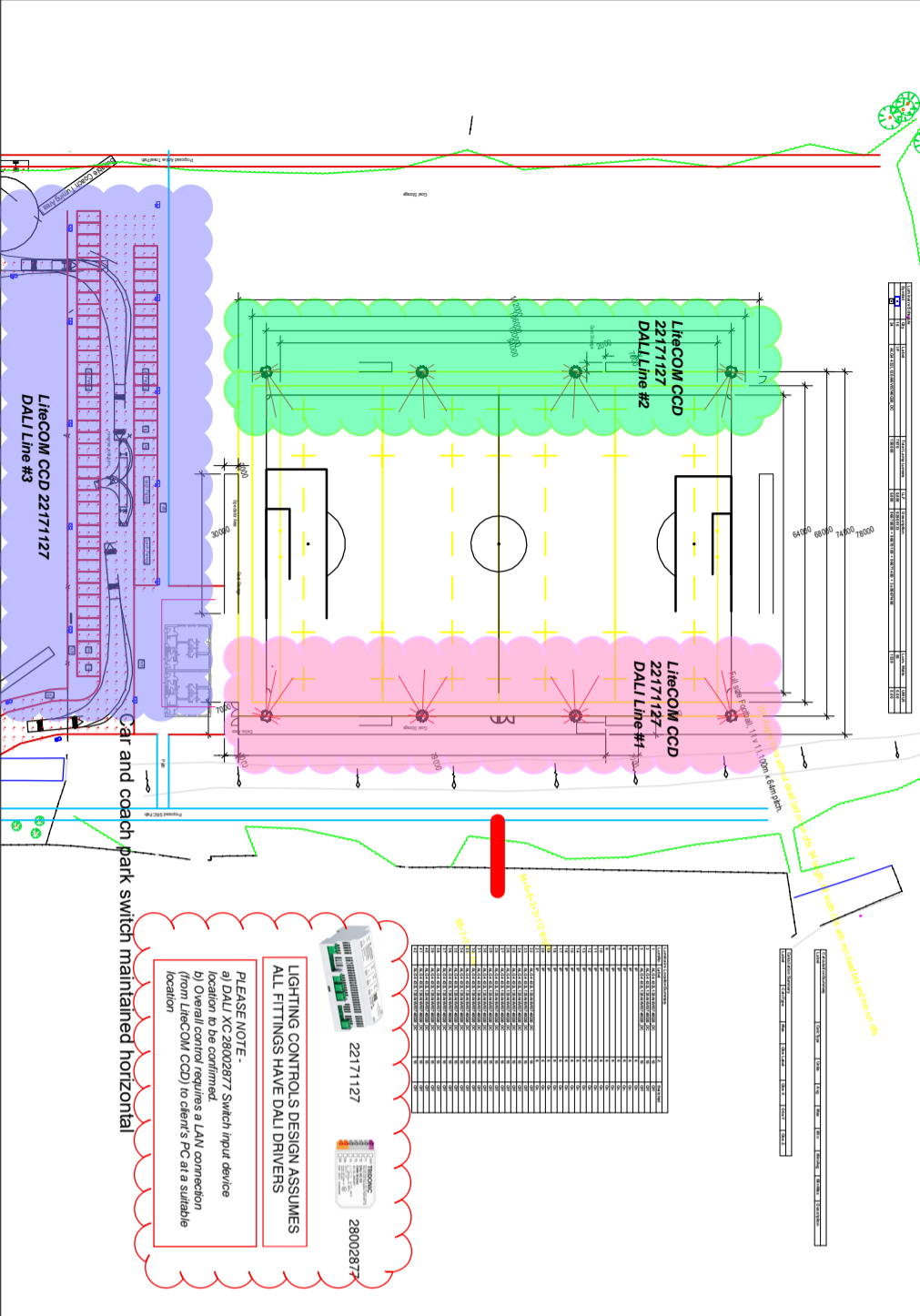
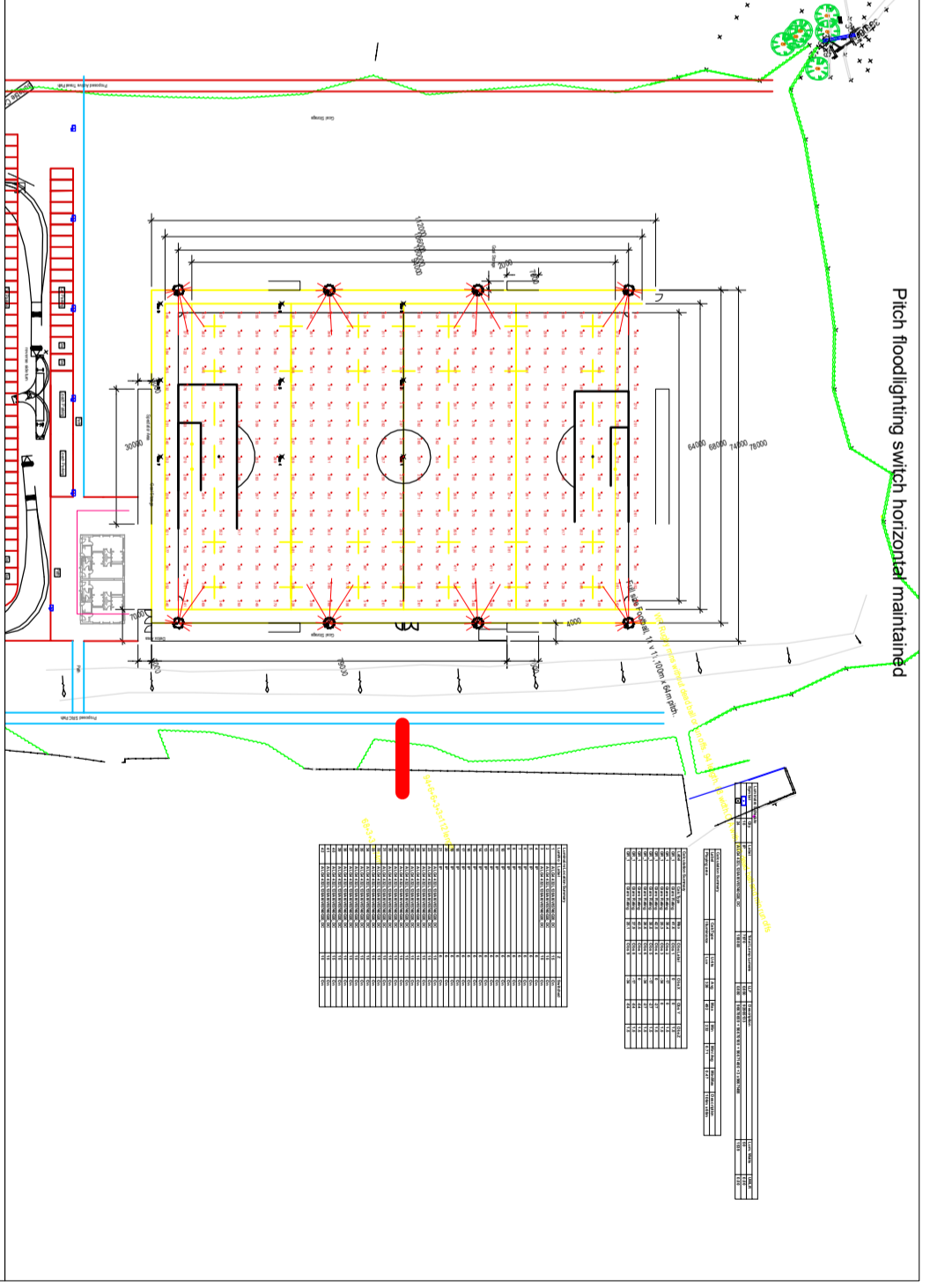


Full switch overspill, horizontal and vertical on housing

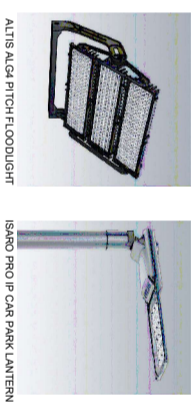


Pitch floodlighting switch horizontal maintained



LIGHTING CONTROLS DESIGN ASSUMES ALL FITTINGS HAVE DALI DRIVERS

PLEASE NOTE-
 a) DALI XC 28002877 Switch input device location to be confirmed.
 b) Overall control requires a LAN connection (from Lieocom CCD) to client's PC at a suitable location



Full switch obtrusive light compliance summary initial lumen values

Obtrusive Light - Compliance Report
 CIE 150:2003, E3-Suburban, Pre-Curfew
 Filename: ZG-AGI-0002283428-EX1-R03-030423
 06/04/2023 14:38:41

Illuminance
 Maximum Allowable Value: 10 Lux

Calculations Tested (1):

Calculation Label	Test	Max. Results	Illum. Results
Obtrusivelght_1_ill_Seg1	Test	PASS	5.1

Luminous Intensity (Cd) At Vertical Planes
 Maximum Allowable Value: 10000 Cd

Calculations Tested (1):

Calculation Label	Test	Results
Obtrusivelght_1_Cd_Seg1	Test	PASS