

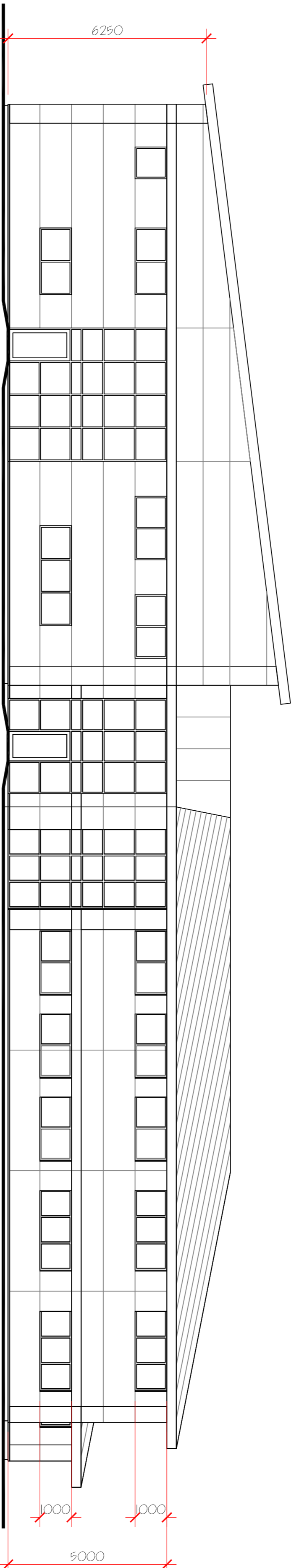
Proposed South - East Elevation

Specification:

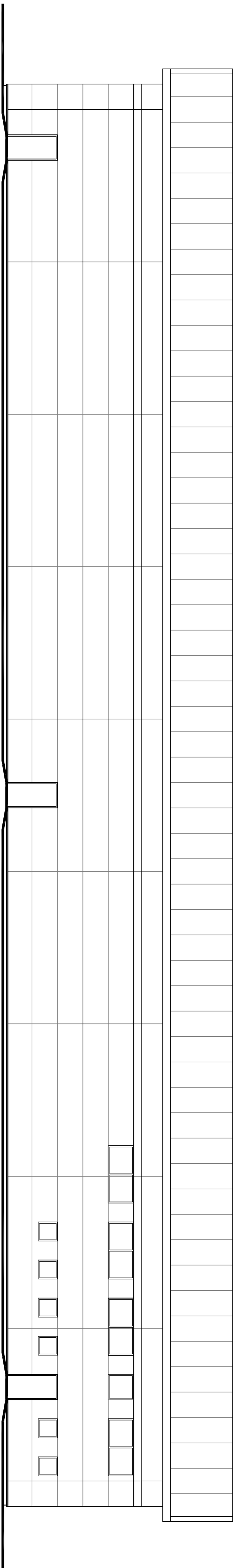
New accommodation to comprise mono pitch structures, with insulated composite cladding roof and wall panels supported off structural steel framing. Panels to be in colorcoated zones with contrasting / feature bands and flashings.

Factory unit loading bay and personnel doors to be insulated colourcoated steel units.

Office Unit windows and doors to be polyester powder coated aluminium double glazed units suitable for severely exposed location.



Proposed South Elevation



Proposed West Elevation