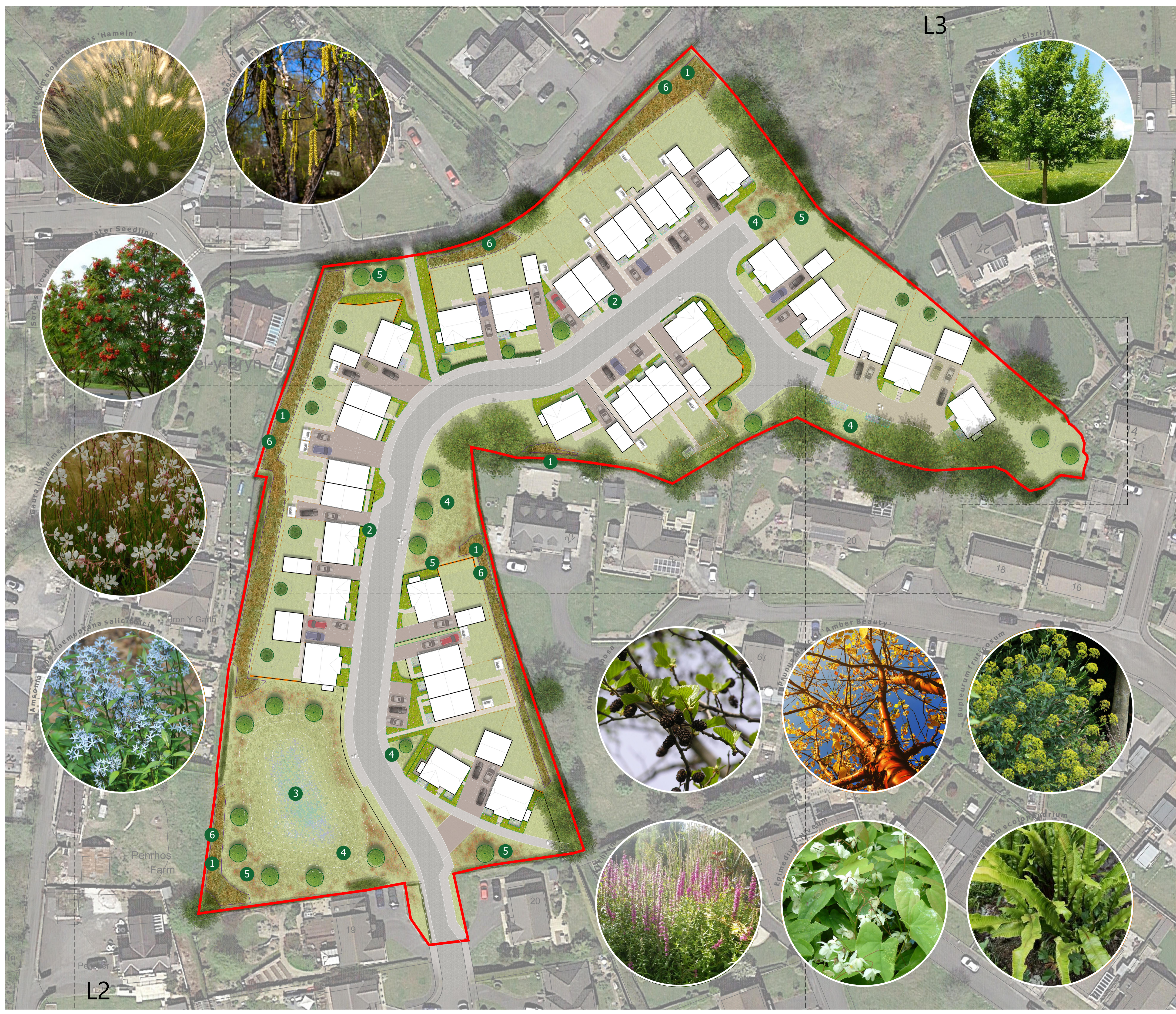


# Llest y Bryn

## Landscape Strategy

L1



### Key

Planning Application boundary

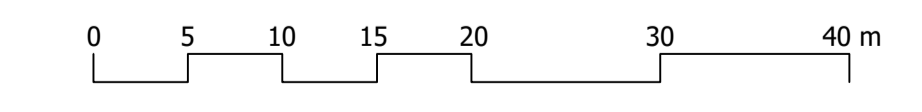
### Soft Landscape

Landscape planting will provide an overall positive impact on the biodiversity value of a site and the local area. Pollinator-friendly plants will be included in the landscape planting for insects.

- Existing trees to be retained with Root Protection Area (RPA) shown as an orange dashed line
- Existing trees to be removed
- Existing vegetation to be removed
- Proposed tree planting with diverse species with colourful foliage, seasonal interest, flowering and/or fruiting species
- Proposed shrub and herbaceous planting comprised of native and non-native species
- Raingardens planted with SuDS appropriate species
- Native Structure Planting
- Proposed species rich grass with reduced mowing frequency away from pedestrian routes
- Proposed detention basin with species rich damp grassland
- Proposed wildflower/annual grassland areas to encourage pollinators, provide biodiversity and amenity
- Gravel trim around building for maintenance access

### Green Infrastructure Target Notes

- 1 Native Structure Planting to supplement existing retained hedgerows and scrub
- 2 Landscape planting will include native species of local provenance (zone 303 or 304) where possible to enhance the biodiversity value of a site and the local area
- 3 Pollinator friendly, local provenance seed mix used within SuDS areas
- 4 Reduced mowing frequency of grassland
- 5 Wildflower meadow created with local provenance seed mix
- 6 Native shrub & tree planting to comprise holly (Ilex aquifolium), hazel (Corylus avellana), hawthorn (Crataegus monogyna), dogwood (Cornus sanguinea), elder (Sambucus nigra), guelder rose (Viburnum opulus), honeysuckle (Lonicera periclymenum) and dog rose (Rosa canina)



Scale @ A1 - 1:400  
 TC24234\_L1-L5 v1.dwg  
 14 August 2024